

VATSIM Germany Instrument Approach Chart



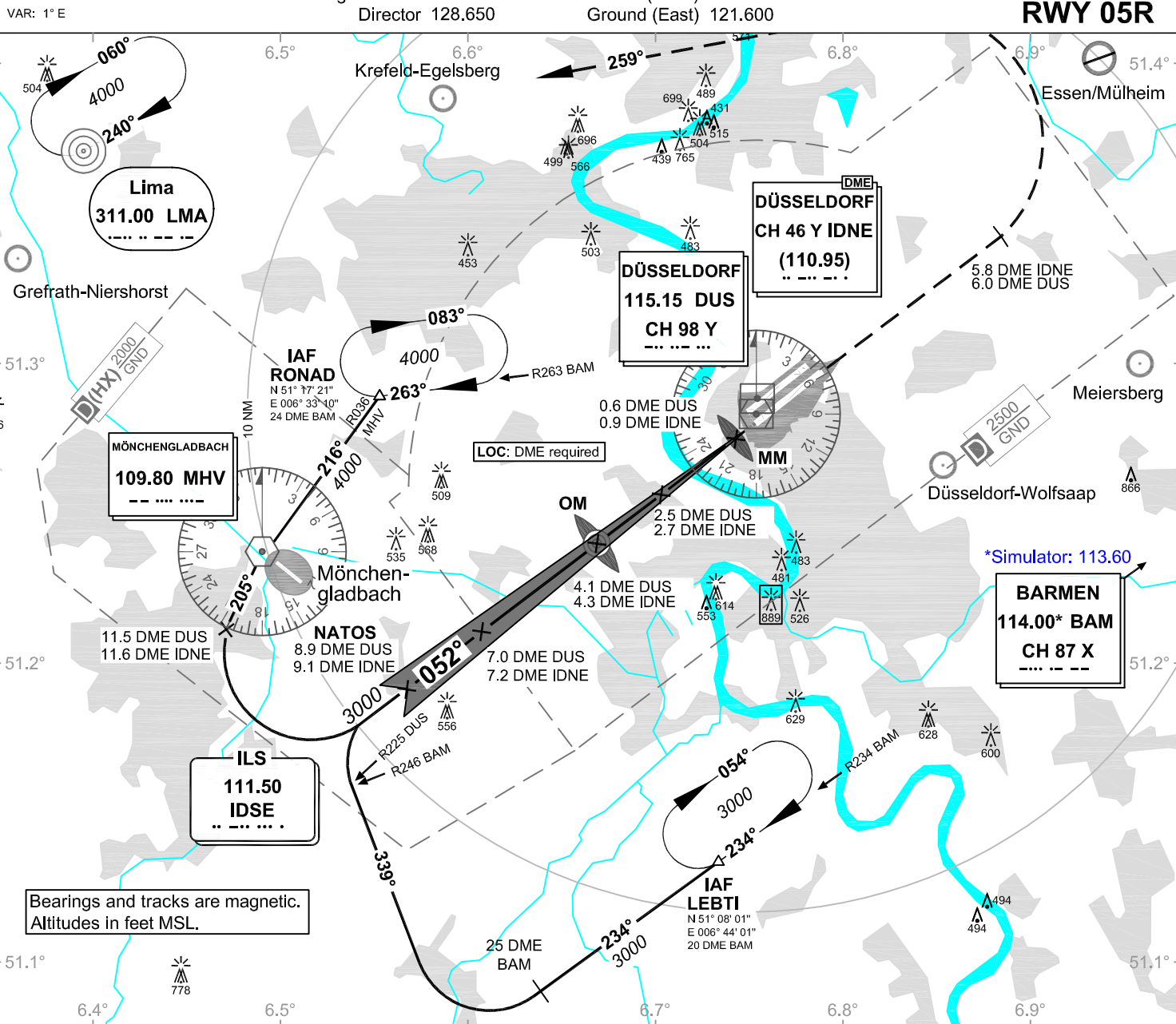
DÜSSELDORF EDDL

Elevation: THR05L 121 ft.

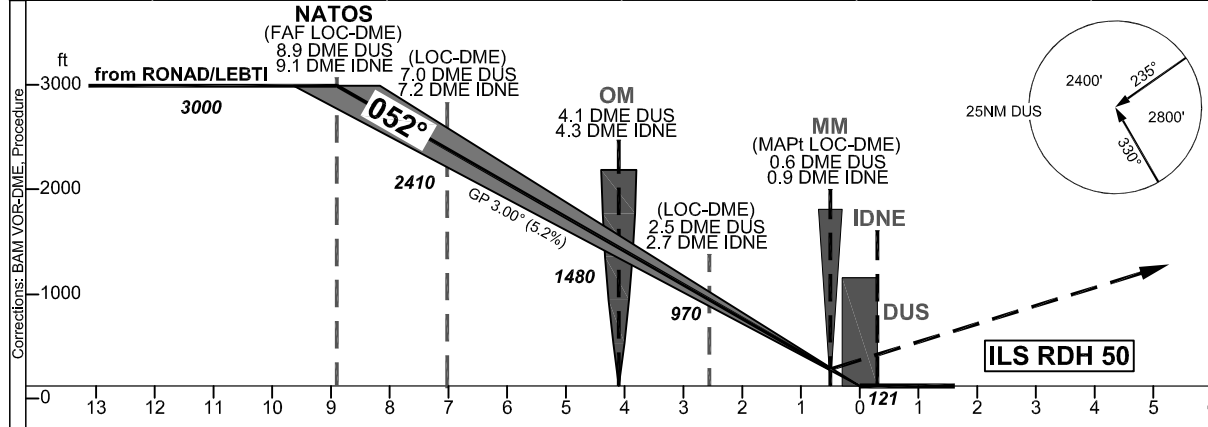
ATIS 123.775
Langen Radar 128.550
Director 128.650

Tower 118.300
Ground (West) 121.900
Ground (East) 121.600

ILS CAT II & III or LOC RWY 05R



Bearings and tracks are magnetic.
Altitudes in feet MSL.



OCA (OCH)	ILS CAT I	ILS CAT II	LOC DME
CAT A	260 (139)	172 (51)	500 (380)
CAT B	270 (149)	188 (67)	570 (450)
CAT C	280 (159)	201 (80)	570 (450)
CAT D	290 (169)	214 (93)	570 (450)
CAT E			
Large Aircraft	290 (169)	214 (93)	

MISSED APPROACH: Climb straight ahead to 5.8 IDNE (6.0 DME DUS); LT on track 259° to LMA, climbing to 4000.

DME VOR DUS	8	7	6	5	4	3	2		
DME THR	8.0	7.0	6.0	5.0	4.0	3.0	2.0		
ALTITUDE	2720	2400	2090	1770	1450	1130	810		

GS	kt	80	100	120	140	160	180
OM - THR (4.1 NM)	MIN:SEC	3:05	2:28	2:03	1:45	1:32	1:22
Rate of descent (5.2%)	ft / MIN	420	530	640	740	850	960

CAT IIIa/b (MNM RVR 75m) approved.

LOC-DME: Timing not authorized for defining the MAPt.