

VATSIM Germany Instrument Approach Chart



DÜSSELDORF EDDL

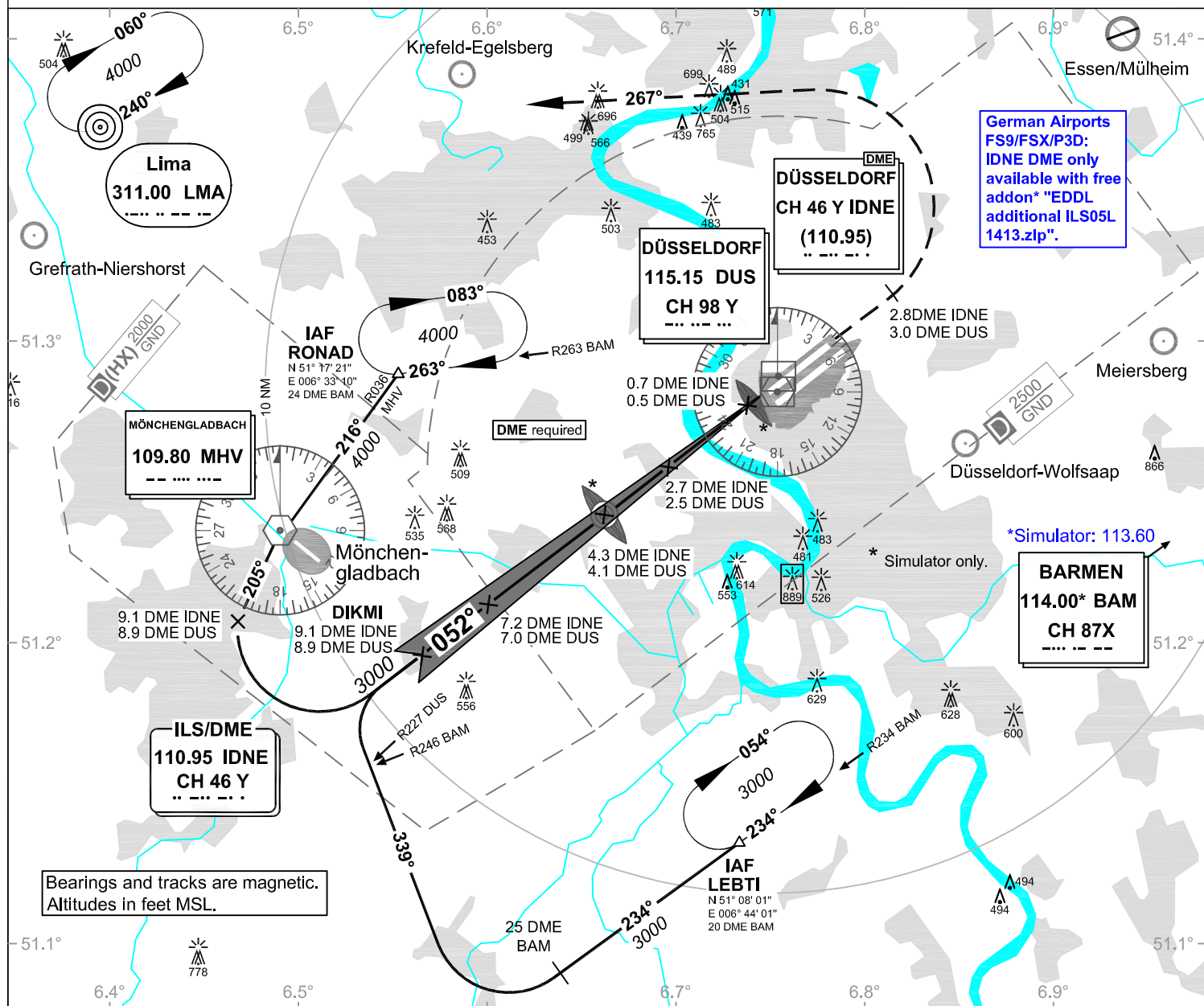
Elevation: THR05L 116 ft.

ATIS 123.775
Langen Radar 128.550
Director 128.650

Tower 118.300
Ground (West) 121.900
Ground (East) 121.600

ILS or LOC
RWY 05L

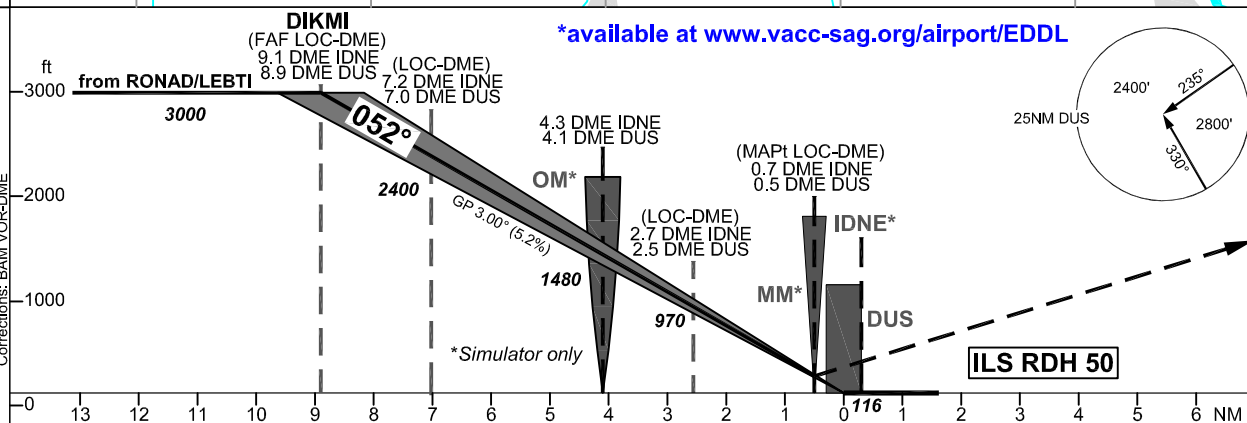
VAR: 1°E



German Airports
FS9/FSX/P3D:
IDNE DME only
available with free
addon* "EDDL
additional ILS05L
1413.zlp".

Bearings and tracks are magnetic.
Altitudes in feet MSL.

*available at www.vacc-sag.org/airport/EDDL



OCA (OCH)	ILS CAT I	LOC DME
CAT A	297 (181)	500 (380)
CAT B	307 (191)	500 (380)
CAT C	333 (217)	500 (380)
CAT D	343 (227)	500 (380)
CAT E		
Large Aircraft	343 (227)	

MISSED APPROACH: Climb straight ahead to 3 DME DUS/2.8 DME IDNE; LT on track 267°
LMA to LMA, climbing to 4000.

DME IDNE	8	7	6	5	4	3	2
DME THR	7.8	6.8	5.8	4.8	3.8	2.8	1.8
ALTITUDE	2650	2340	2020	1700	1380	1060	740

GS	kt	80	100	120	140	160	180
4.3 DME IDNE/4.1 DME DUS - THR (4.1 NM)	MIN:SEC	3:05	2:28	2:03	1:45	1:32	1:22
Rate of descent (5.2%)	ft / MIN	420	530	640	740	850	960

LOC-DME: Timing not authorized for defining the MAPT.