

# VATSIM Germany Standard Instrument Departure Chart



## COLOGNE / BONN EDDK

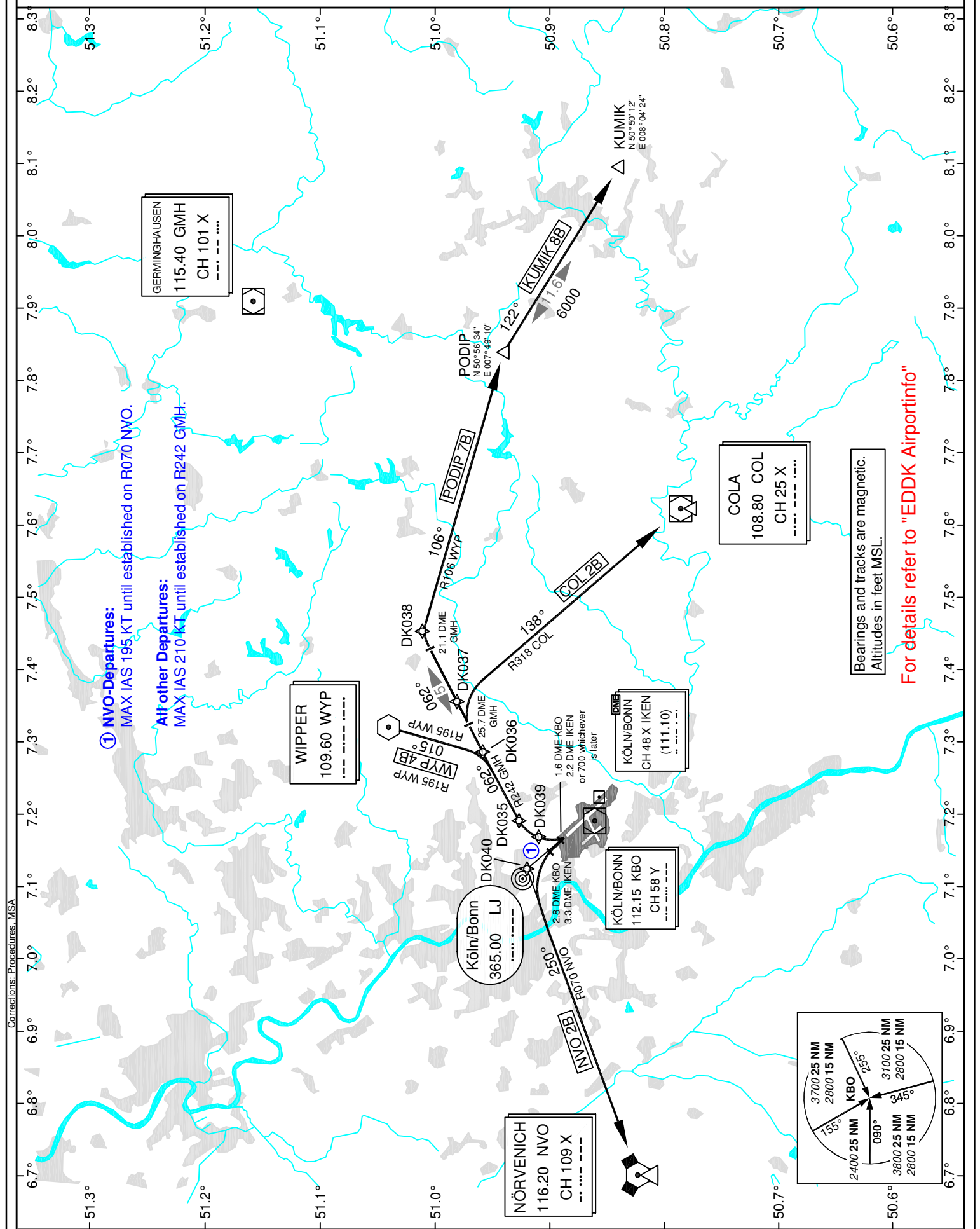
Transition Altitude: 5000 ft.

ATIS 132.120  
Delivery 121.850  
Ground 121.720

Tower 124.970  
Langen Radar 135.350

### SID RWY 32R

VAR: 1°E



**NVO-Departures:**  
MAX IAS 195 KT until established on R070 NVO.

**All other Departures:**  
MAX IAS 210 KT until established on R242 GMH.

Corrections: Procedures: MSA