

VATSIM Germany Standard Instrument Departure Chart



COLOGNE / BONN EDDK

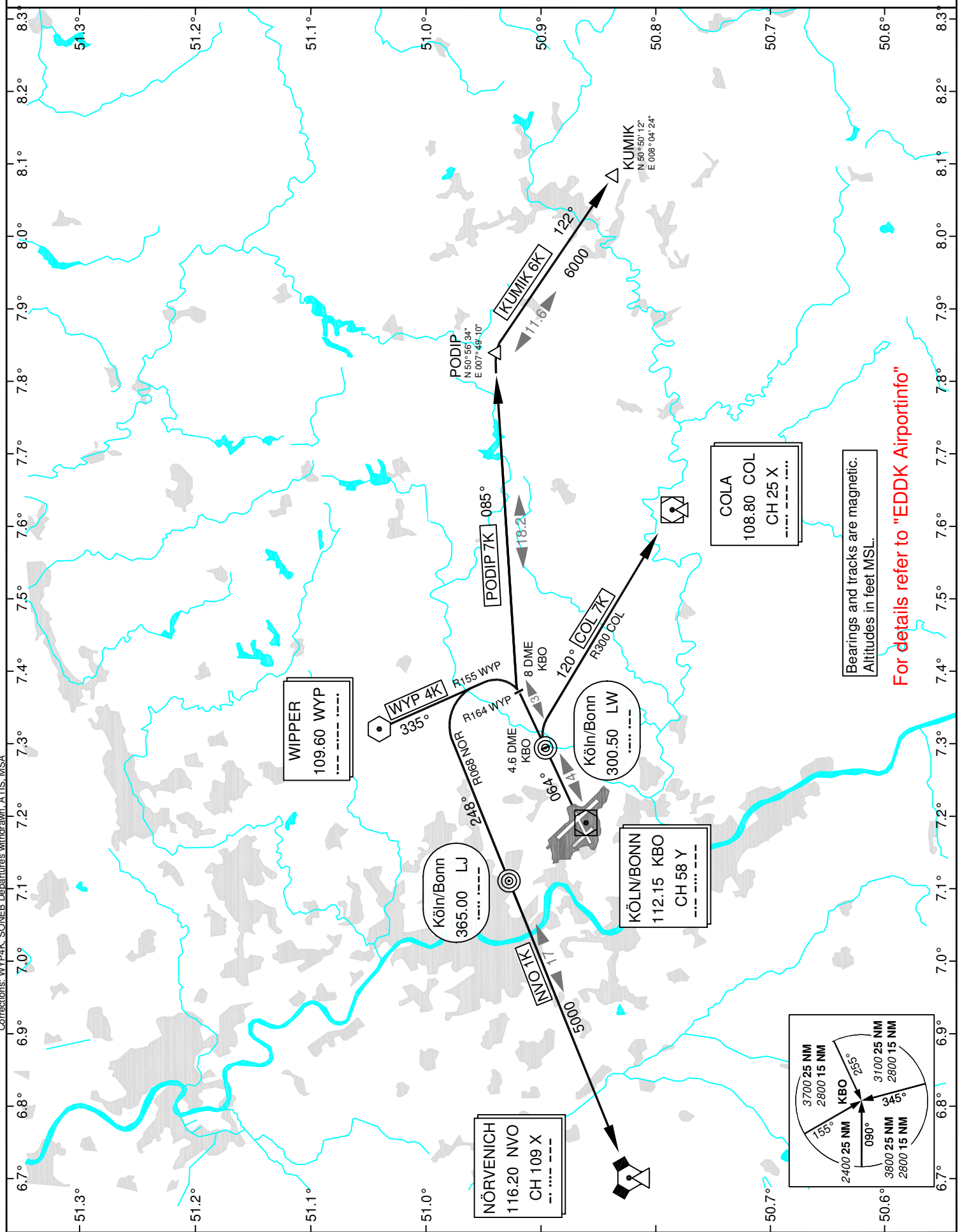
Transition Altitude: 5000 ft.

ATIS 132.120
Delivery 121.850
Ground 121.720

Tower 124.970
Langen Radar 135.350

SID RWY 06

VAR: 1°E



Bearings and tracks are magnetic.
Altitudes in feet MSL.

For details refer to "EDDK Airportinfo"

Corrections: WYP 4K: SONEB Departures withdrawn - ATIS: MSA