

# VATSIM Germany Instrument Approach Chart



## COLOGNE / BONN EDDK

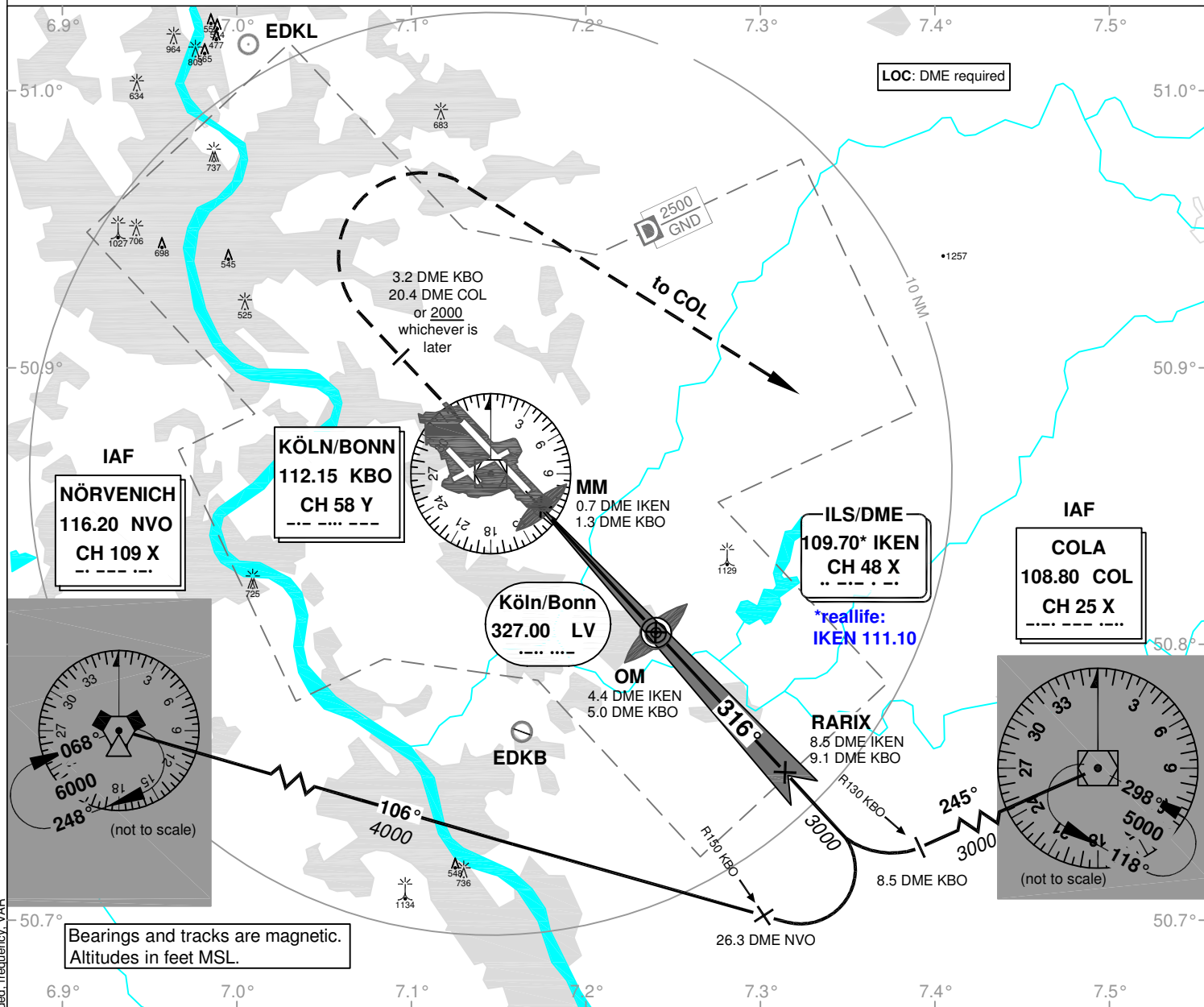
Elevation: THR 32R 302 ft.

ATIS 124.100  
Arrival 135.350

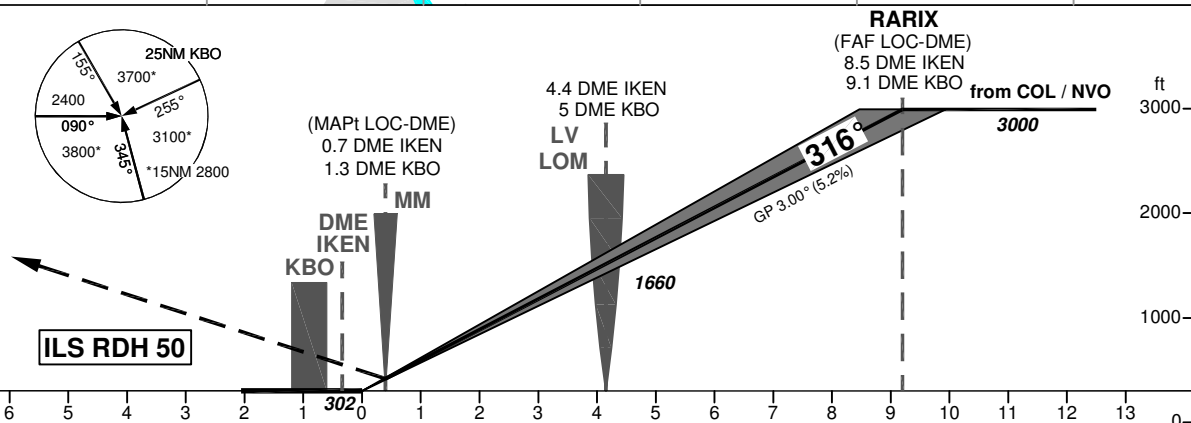
Director 121.050  
Tower 124.970  
Ground 121.720

### ILS CAT II & III or LOC RWY 32R

VAR: 1°E



OCA (OCH)	ILS CAT I	ILS CAT II	LOC DME
CAT A	434 (132)	345 (43)	740 (440)
CAT B	444 (142)	362 (60)	740 (440)
CAT C	456 (154)	377 (75)	740 (440)
CAT D	466 (164)	390 (88)	740 (440)
CAT E	486 (184)	417 (115)	740 (440)
Large Aircraft	559 (257)	392 (90)	



**MISSED APPROACH:** Climb straight ahead to 5000; when passing 2000 or 3.2 DME KBO (20.4 DME COL), whichever is later, RT to COL.

DME IKEN	2	3	4	5	6	7	8
DME THR	1.8	2.8	3.8	4.8	5.8	6.8	7.8
ALTITUDE	930	1250	1570	1890	2200	2520	2840

GS	kt	80	100	120	140	160	180
LO LV - THR (4.2 NM)	MIN:SEC	3:09	2:31	2:06	1:48	1:35	1:24
Rate of descent (5.2%)	ft / MIN	420	530	640	740	850	960

**CAT IIIa and IIIb (MNM RVR 75m) approved except CAT E ACFT.**

**LOC-DME:** Timing not authorized for defining the MAPt.