

# VATSIM Germany Standard Instrument Arrival Chart



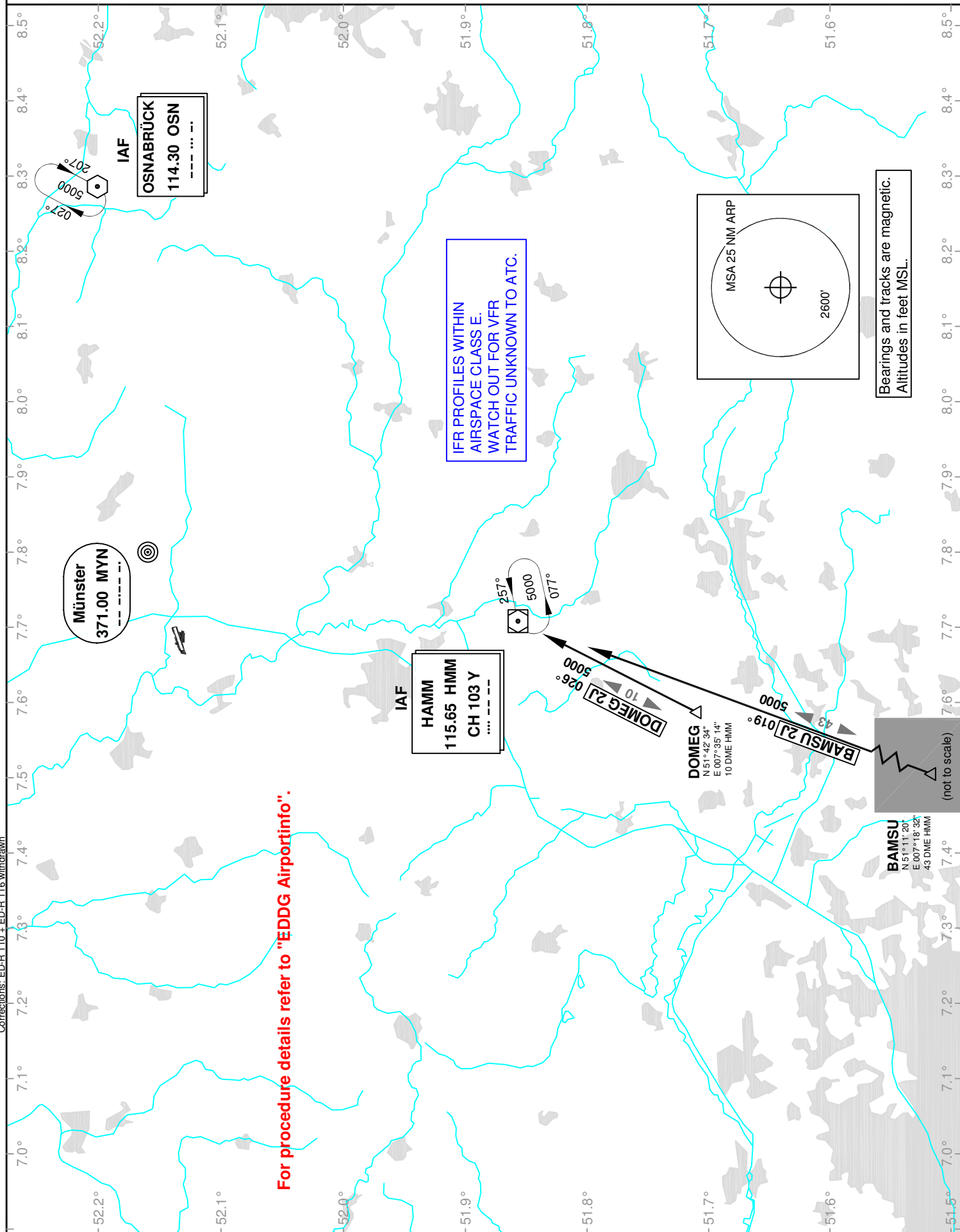
## MÜNSTER / OSNABRÜCK EDDG

Transition Altitude: 5000 ft.

ATIS 127.170  
Langen Radar 129.300  
VAR: 1°E

Tower 129.800  
Ground 121.870

### STAR RWY 07/25



For procedure details refer to "EDDG Airportinfo".

Corrections: ED-R 110 + ED-R 116 withdrawn