

VATSIM Germany Standard Instrument Departure Chart



MÜNSTER / OSNABRÜCK EDDG

Transition Altitude: 5000 ft.

ATIS 127.170

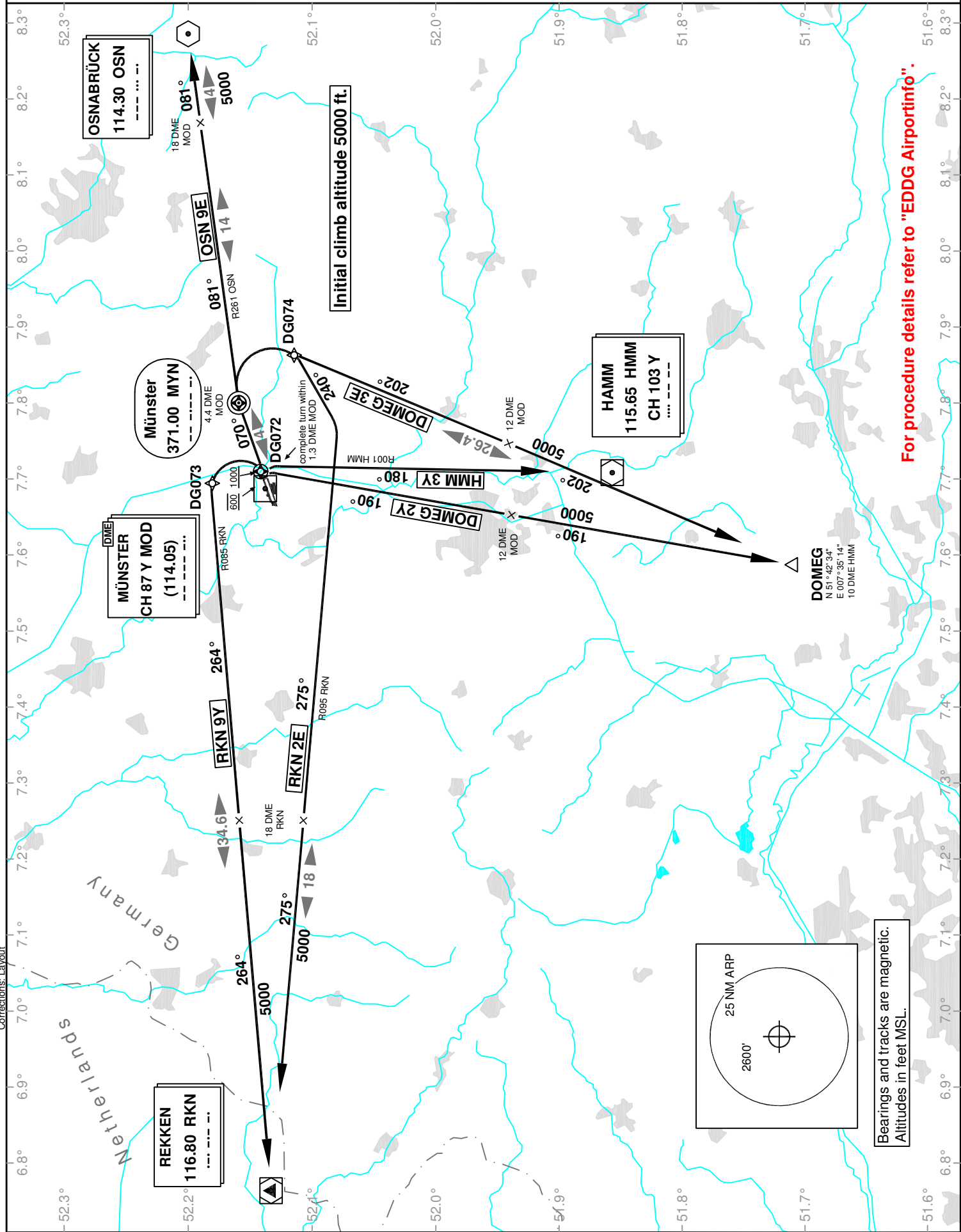
Langen Radar 129.300

Ground 121.870

Tower 129.800

SID RWY 07

VAR: 1°E



For procedure details refer to "EDDG Airportinfo".

Bearings and tracks are magnetic.
Altitudes in feet MSL.

Corrections: Layout