

VATSIM Germany Instrument Approach Chart



MÜNSTER / OSNABRÜCK EDDG

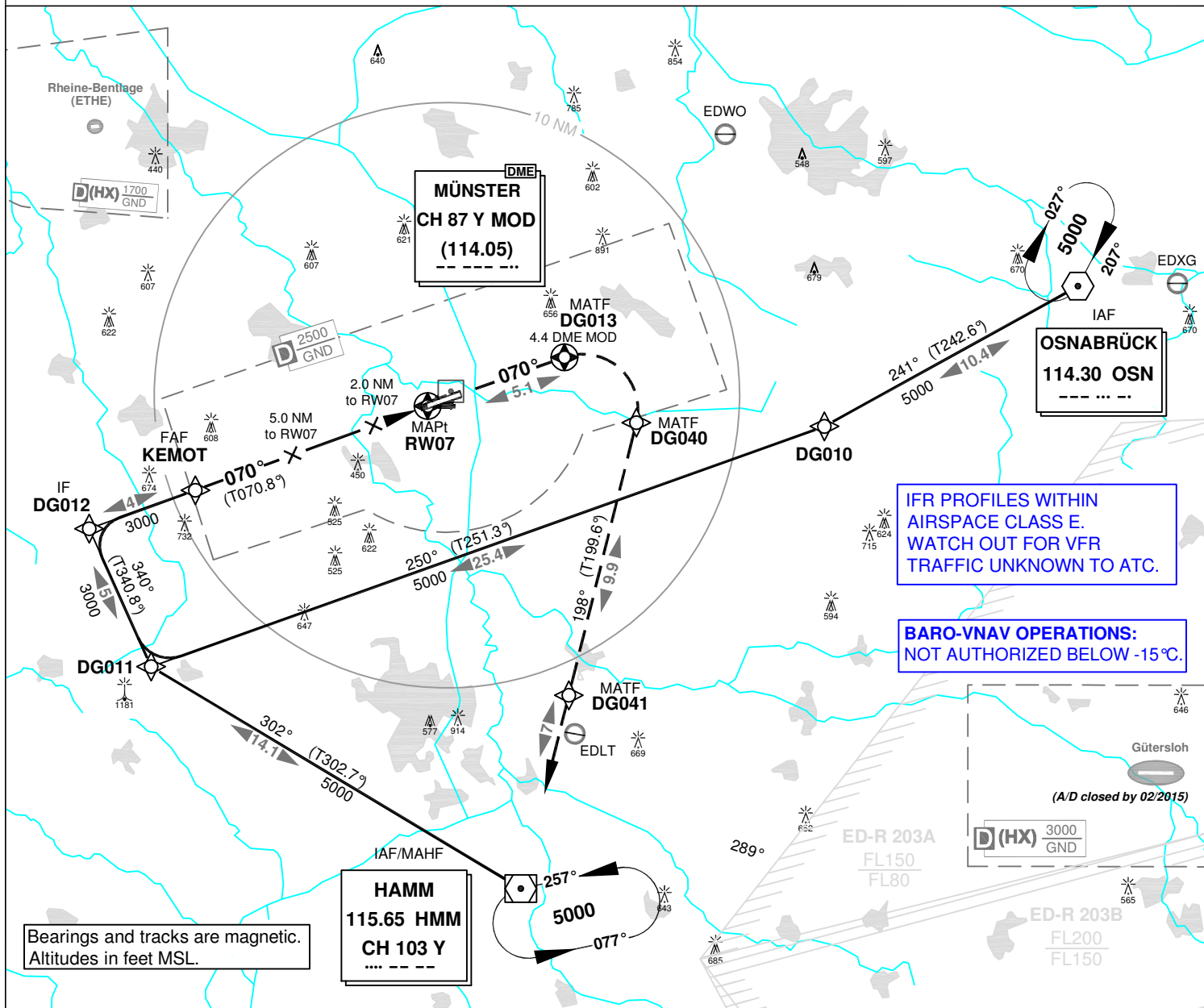
Elevation: THR07 156 ft.

ATIS 127.170
Langen Radar 129.300
118.750

Tower 129.800
Ground 121.870

RNAV (GPS) RWY 07

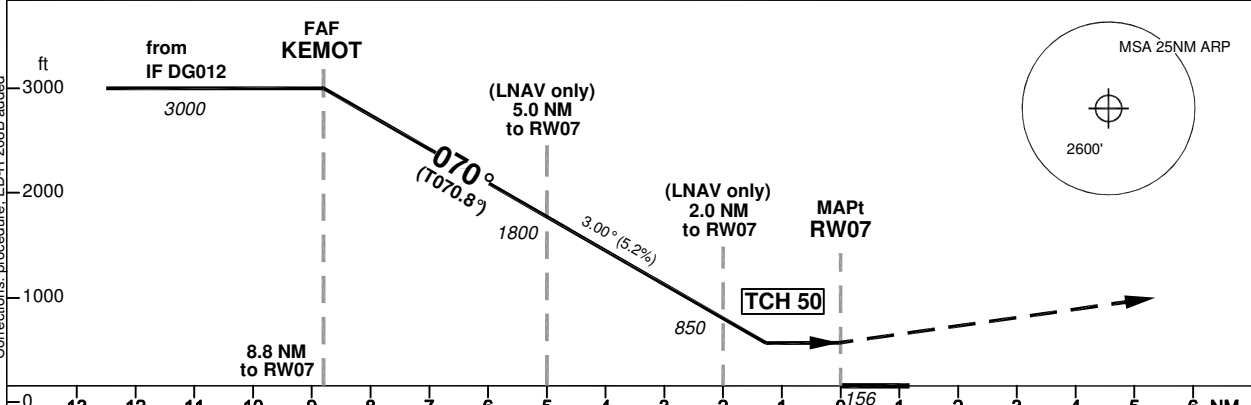
VAR: 1°E



IFR PROFILES WITHIN
AIRSPACE CLASS E.
WATCH OUT FOR VFR
TRAFFIC UNKNOWN TO ATC.

BARO-VNAV OPERATIONS:
NOT AUTHORIZED BELOW -15°C.

Bearings and tracks are magnetic.
Altitudes in feet MSL.



| OCA (OCH) | LNAV | LNAV/VNAV |
|----------------|-----------|-----------|
| CAT A | 550 (400) | 470 (320) |
| CAT B | 550 (400) | 470 (320) |
| CAT C | 550 (440) | 470 (320) |
| CAT D | 550 (440) | 470 (320) |
| CAT E | | |
| Large Aircraft | | |

MISSED APPROACH: Climb on track 070° to DG013; RT via DG040 on track 198° to HMM climbing to 4000, at DG041 climb to 5000.

DG013 [R] - DG040 - DG041 [A4000] - HMM [A5000]

| | | | | | | | | | |
|---------------|------|------|------|------|------|------|-----|--|--|
| DIST THR RW07 | 8 | 7 | 6 | 5 | 4 | 3 | 2 | | |
| ALTITUDE | 2760 | 2440 | 2120 | 1800 | 1480 | 1170 | 850 | | |

| | | | | | | | |
|------------------------|----------|------|------|------|------|------|------|
| GS | kt | 80 | 100 | 120 | 140 | 160 | 180 |
| KEMOT - RW07 (8.8 NM) | MIN:SEC | 6:36 | 5:17 | 4:24 | 3:46 | 3:18 | 2:56 |
| Rate of descent (5.2%) | ft / MIN | 420 | 530 | 640 | 740 | 850 | 960 |

Timing not authorized for defining the MAPt.