

VATSIM Germany Instrument Approach Chart



MÜNSTER / OSNABRÜCK EDDG

Elevation: THR 07 156 ft.

ATIS 127.170

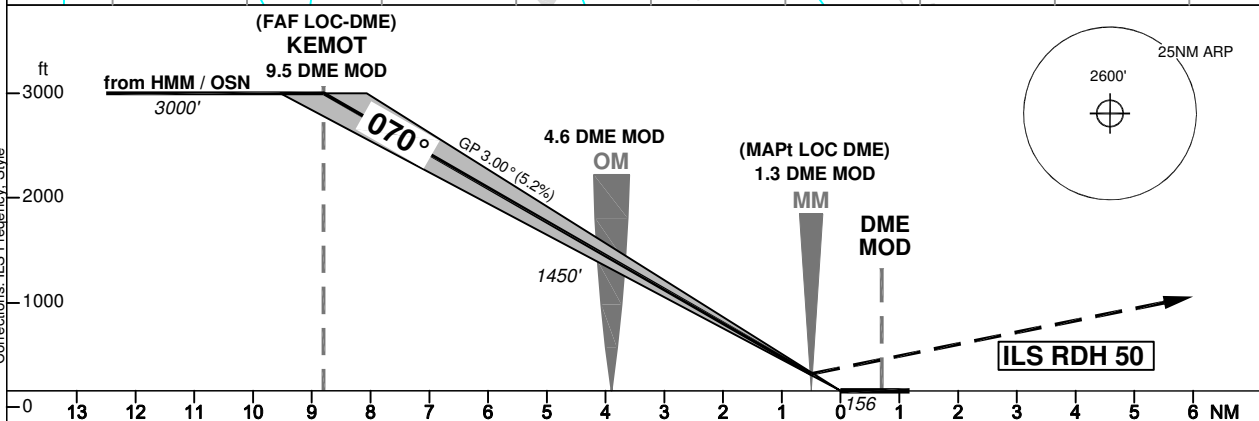
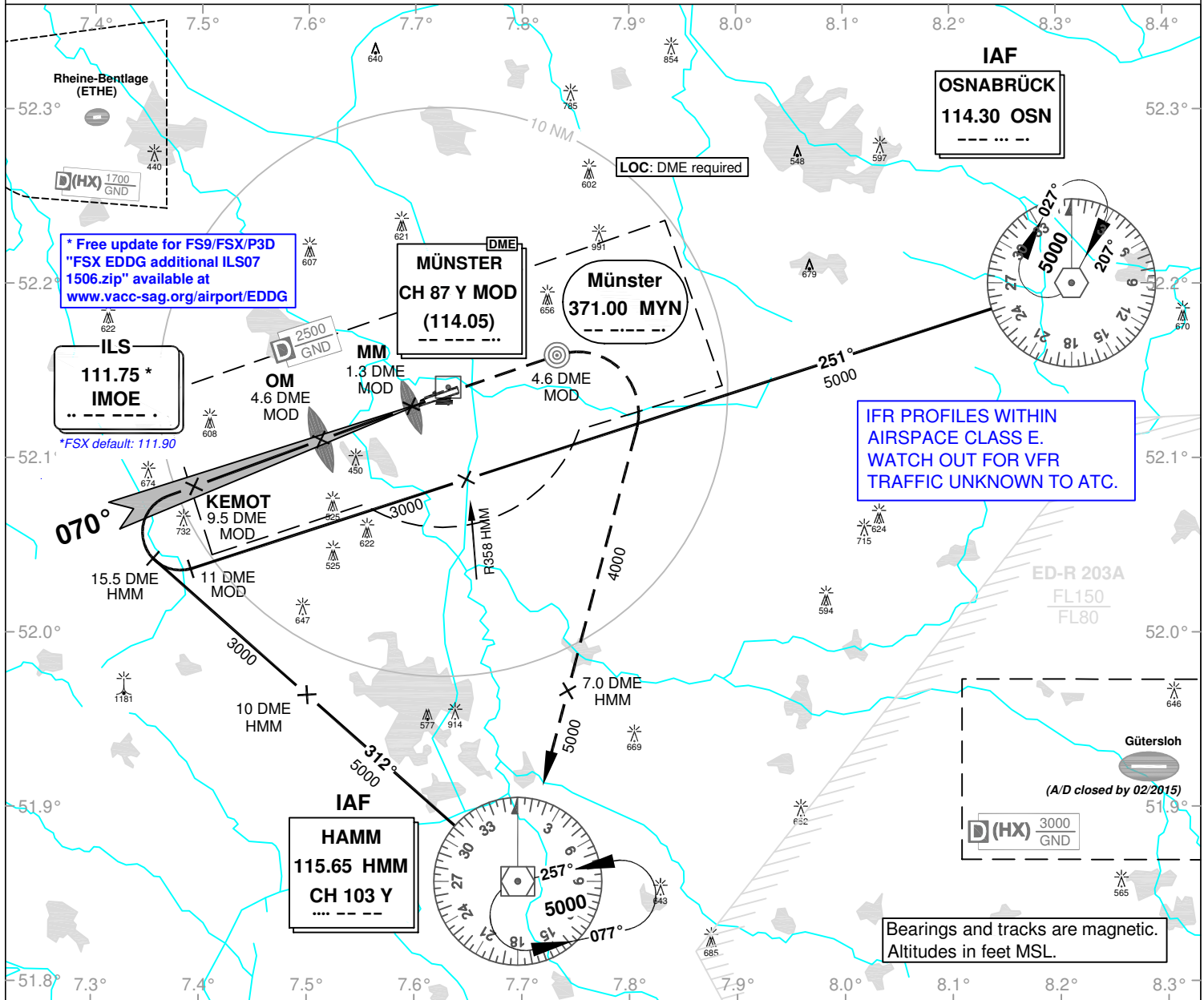
Langen Radar 129.300

Tower 129.800

Ground 121.870

ILS or LOC
RWY 07

VAR: 0°



| OCA (OCH) | ILS CAT I | LOC DME |
|----------------|-----------|-----------|
| CAT A | 304 (148) | 610 (460) |
| CAT B | 314 (158) | 610 (460) |
| CAT C | 324 (168) | 610 (460) |
| CAT D | 333 (177) | 610 (460) |
| CAT E | | |
| Large Aircraft | | |

| DME VOR MOD | 9 | 8 | 7 | 6 | 5 | 4 | 3 | 2 |
|-------------|------|------|------|------|------|------|-----|-----|
| DME THR | 8.3 | 7.3 | 6.3 | 5.3 | 4.3 | 3.3 | 2.3 | 1.3 |
| ALTITUDE | 2850 | 2540 | 2220 | 1900 | 1580 | 1260 | 940 | 620 |

| GS | kt | 80 | 100 | 120 | 140 | 160 | 180 |
|------------------------|----------|------|------|------|------|------|------|
| OM - THR (3.9 NM) | MIN:SEC | 2:56 | 2:20 | 1:57 | 1:40 | 1:28 | 1:18 |
| Rate of descent (5.2%) | ft / MIN | 420 | 530 | 640 | 740 | 850 | 960 |

LOC-DME: Timing not authorized for defining the MAPt.