

**VATSIM Germany**  
**Standard Instrument Arrival Chart**
**Frankfurt Main**  
**EDDF**  
**STAR RNAV (GPS)**  
**RWY 07/25**

Designator	Identification Significant Points	MAG Track	Dist NM	MNM IFR Cruising Level <sup>f</sup>	Remarks
I KERAX 1G	<b>KERAX ONE GOLF</b> Δ KERAX Δ GED Δ MTR Δ ORVIV				By ATC only.
		252(253.6)	13.3	5000 (FL80*)	
		241(242.3)	17.4	4500 (6500*)	
		130(131.4)	8.4	4000 (5000*)	
I KERAX 1R	<b>KERAX ONE ROMEO</b> Δ KERAX Δ GED Δ GEDSI Δ MTR Δ ETARU Δ DF951 Δ IBLUS				
		252(253.6)	13.3	5000 (FL80*)	
		210(211.9)	9.0		
		266(267.8)	10.7		
		270(271.4)	28.3		
		196(197.3)	13.5		
		161(162.2)	11.0	4000 (5000*)	
I PSA 1G	<b>SPESSART ONE GOLF</b> Δ PSA Δ KUGIK				
		295(296.3)	14.1	4000 (5000*)	
I PSA 2R	<b>SPESSART TWO ROMEO</b> Δ PSA Δ KUGUK Δ DF950 Δ ULNOK				
		295(296.3)	14.1	4000 (5000*)	
		239(240.1)	15.6	4000 (6500*)	
		273(274.6)	9.9	3000 (4000*)	
I ROLIS 1G	<b>ROLIS ONE GOLF</b> Δ ROLIS Δ ETARU Δ FFM Δ MTR Δ ORVIV				
		128(129.0)	14.2	5000 (FL110*)	
		123(124.3)	24.6	5000 (FL80*)	
		030(031.3)	15.7	4000 (6500*)	
		130(131.4)	8.4	4000 (5000*)	
I ROLIS 1R	<b>ROLIS ONE ROMEO</b> Δ ROLIS Δ DF951 Δ IBLUS				
		161(162.1)	23.0	5000 (FL80*)	
		161(162.2)	11.0	4000 (5000*)	
I UNOKO 1G	<b>UNOKO ONE GOLF</b> Δ UNOKO Δ IBVIL Δ MANUV Δ RAMOB Δ ROKIM Δ FFM Δ MTR Δ ORVIV				
		101(102.6)	5.6	5000 (FL110*)	
		156(157.5)	9.0		
		140(141.8)	14.1		
		113(114.7)	15.6	5000 (FL80*)	
		080(081.9)	22.9	4000 (FL80*)	
		030(031.3)	15.7	4000 (6500*)	
		130(131.4)	8.4	4000 (5000*)	
I UNOKO 1R	<b>UNOKO ONE ROMEO</b> Δ UNOKO Δ IBVIL Δ MANUV Δ RAMOB Δ REDLI Δ IBLUS				
		101(102.6)	5.6	5000 (FL100*)	
		156(157.5)	9.0		
		140(141.8)	14.1		
		139(140.3)	7.1	5000 (FL80*)	
		122(123.0)	13.6	4000 (5000*)	

(\* Operational Altitude)

**Note:** Route Designator R STAR RWY 07, G STAR RWY 25

# VATSIM Germany Standard Instrument Arrival Chart

## Frankfurt Main (East) EDDF

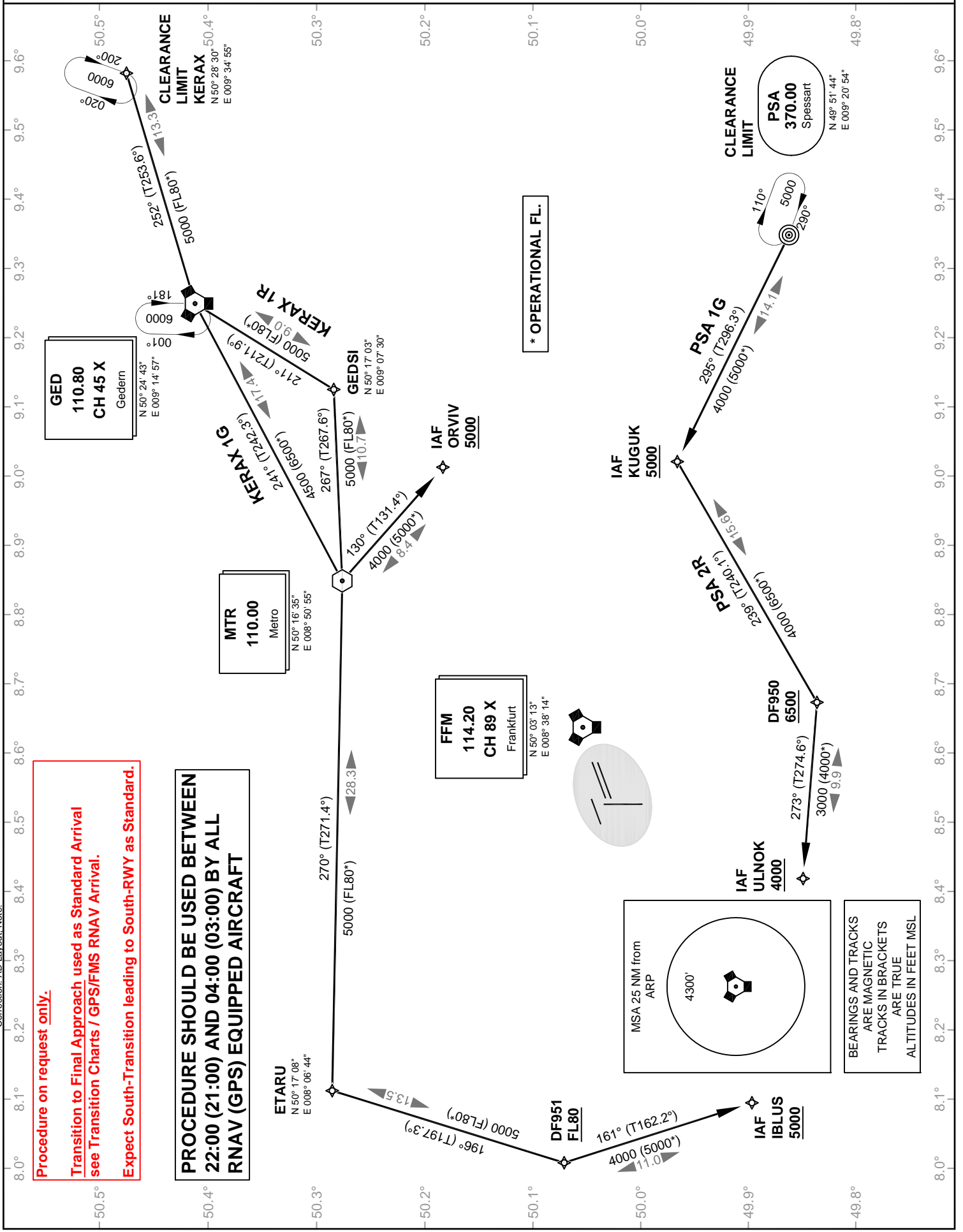
Transition Altitude: 5000 ft.

ATIS 118.020

### STAR RNAV (GPS) RWY 07/25

VAR: 1° E

Langen Radar (N) 120.800  
Langen Radar (S) 125.350



# VATSIM Germany Standard Instrument Arrival Chart

## Frankfurt Main (West) EDDF

Transition Altitude: 5000 ft.

ATIS 118.020

### STAR RNAV (GPS) RWY 07/25

VAR: 1° E

Langen Radar (N) 120.800  
Langen Radar (S) 125.350

**Procedure on request only.**  
**Transition to Final Approach used as Standard Arrival**  
**see Transition Charts / GPS/FMS RNAV Arrival.**  
**Expect South-Transition leading to South-RWY as Standard.**

**PROCEDURE SHOULD BE USED BETWEEN  
22:00 (21:00) AND 04:00 (03:00) BY ALL  
RNAV (GPS) EQUIPPED AIRCRAFT**

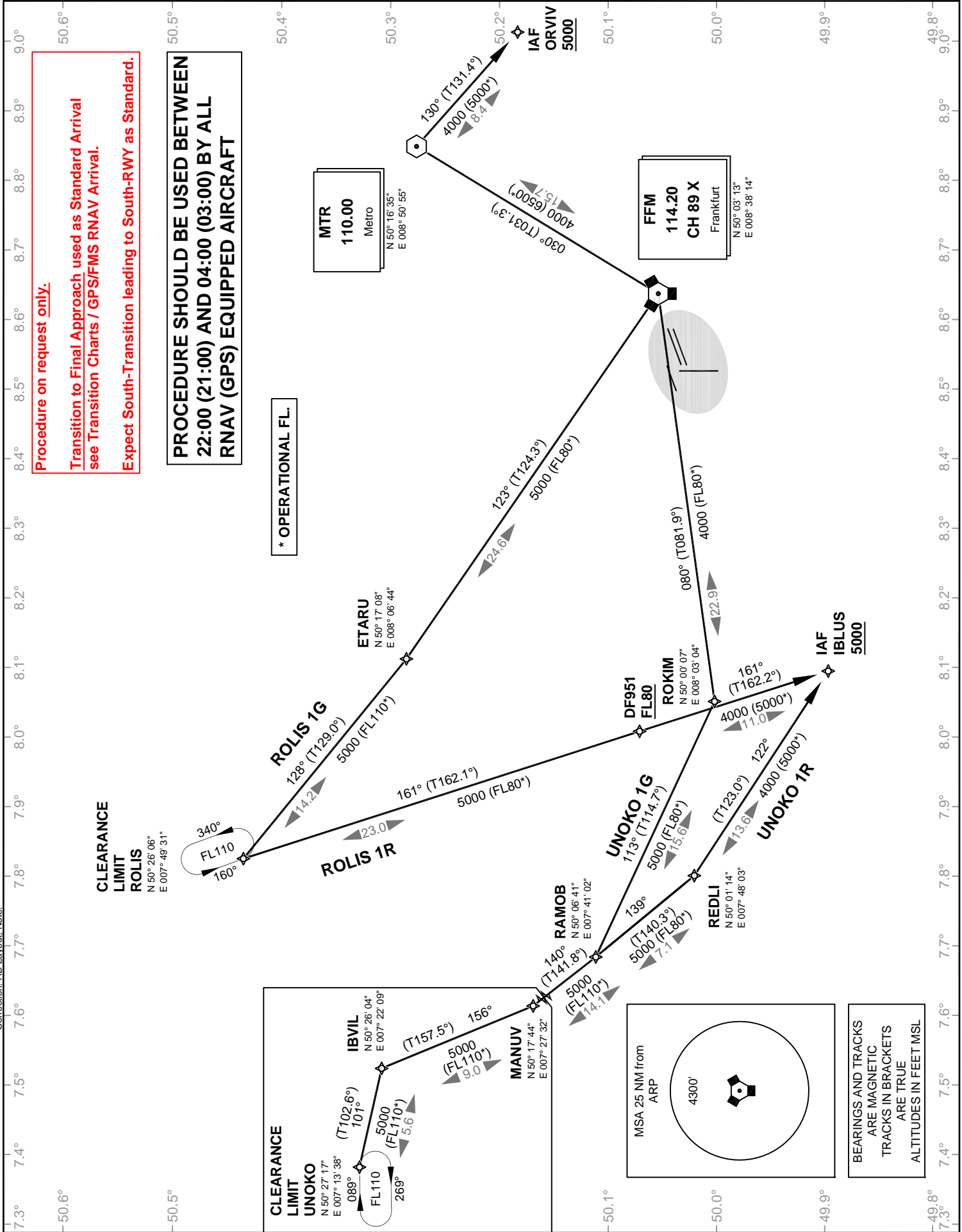
**\* OPERATIONAL FL.**

**CLEARANCE  
LIMIT**

**ROLIS**  
N 50° 26' 06"  
E 007° 49' 31"

**CLEARANCE  
LIMIT**

**UNOKO**  
N 50° 27' 17"  
E 007° 13' 38"



Correction: AD Layout. Note.