

VATSIM Germany Standard Instrument Departure Chart

FRANKFURT MAIN EDDF

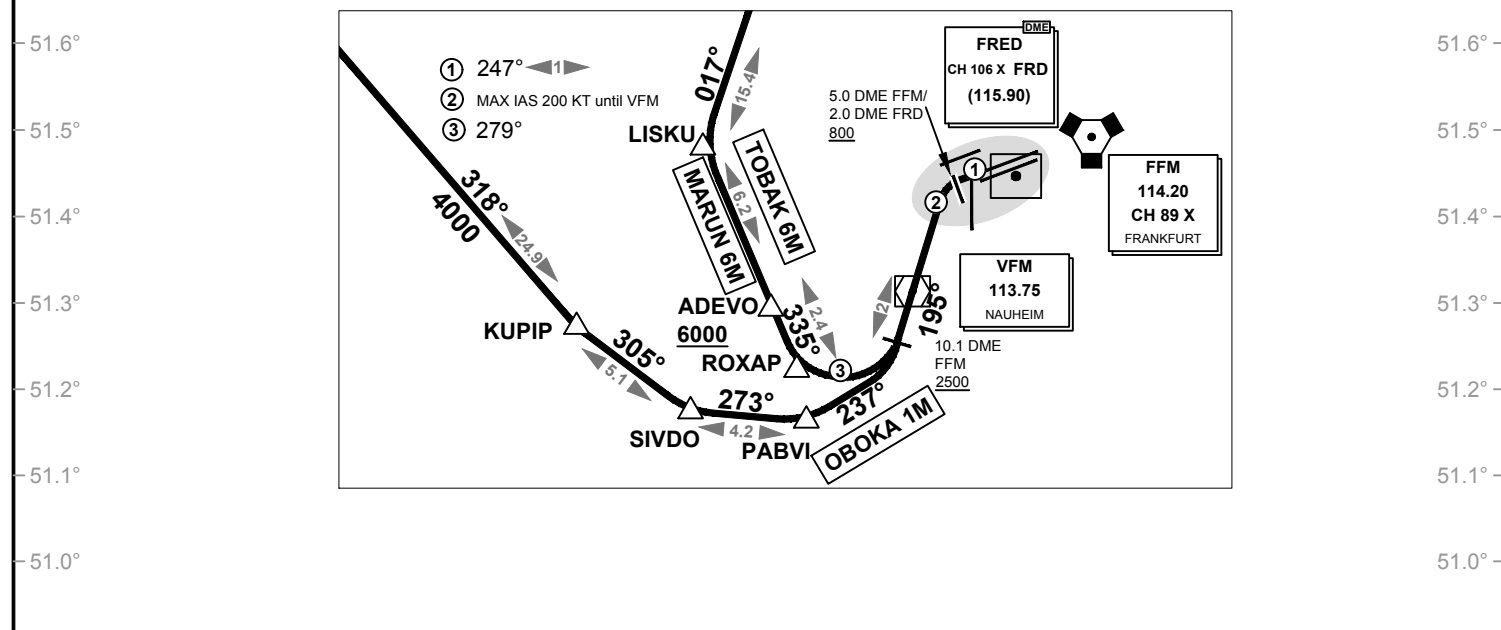
SID MIKE RWY 25C

Transition Altitude: 5000 ft.

ATIS 118.050
Delivery 121.900
Apron 121.750

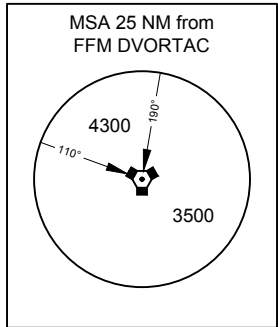
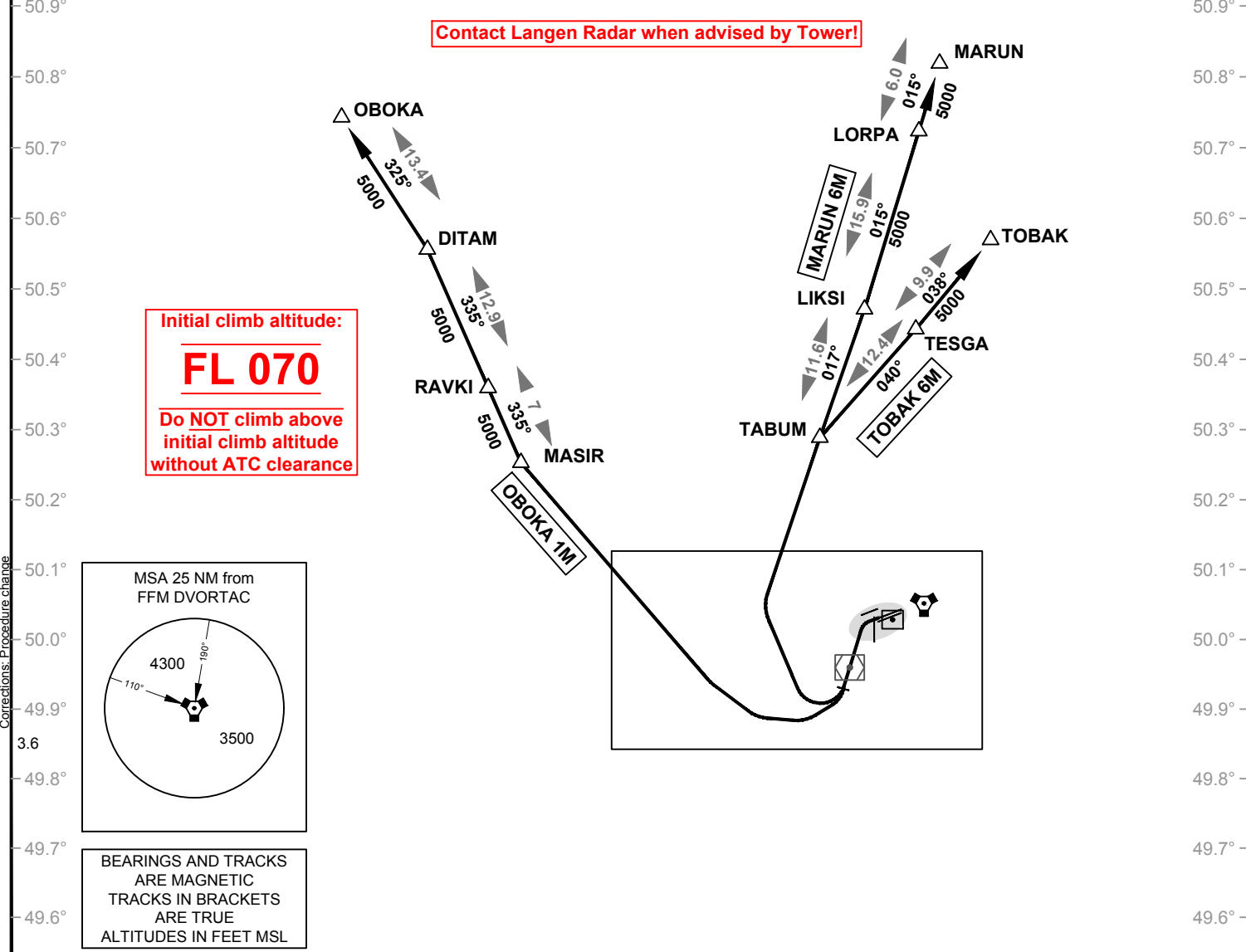
Tower 119.000
Langen Radar(N) 120.800
Langen Radar 120.150

VAR: 2° E



Contact Langen Radar when advised by Tower!

Initial climb altitude:
FL 070
Do NOT climb above
initial climb altitude
without ATC clearance



BEARINGS AND TRACKS
ARE MAGNETIC
TRACKS IN BRACKETS
ARE TRUE
ALTITUDES IN FEET MSL



VATSIM Germany Standard Instrument Departure Chart (RNP)

FRANKFURT MAIN EDDF

SID WHISKEY (NORTH) RWY 25C

Transition Altitude: 5000 ft.

ATIS 118.050

Tower 119.000

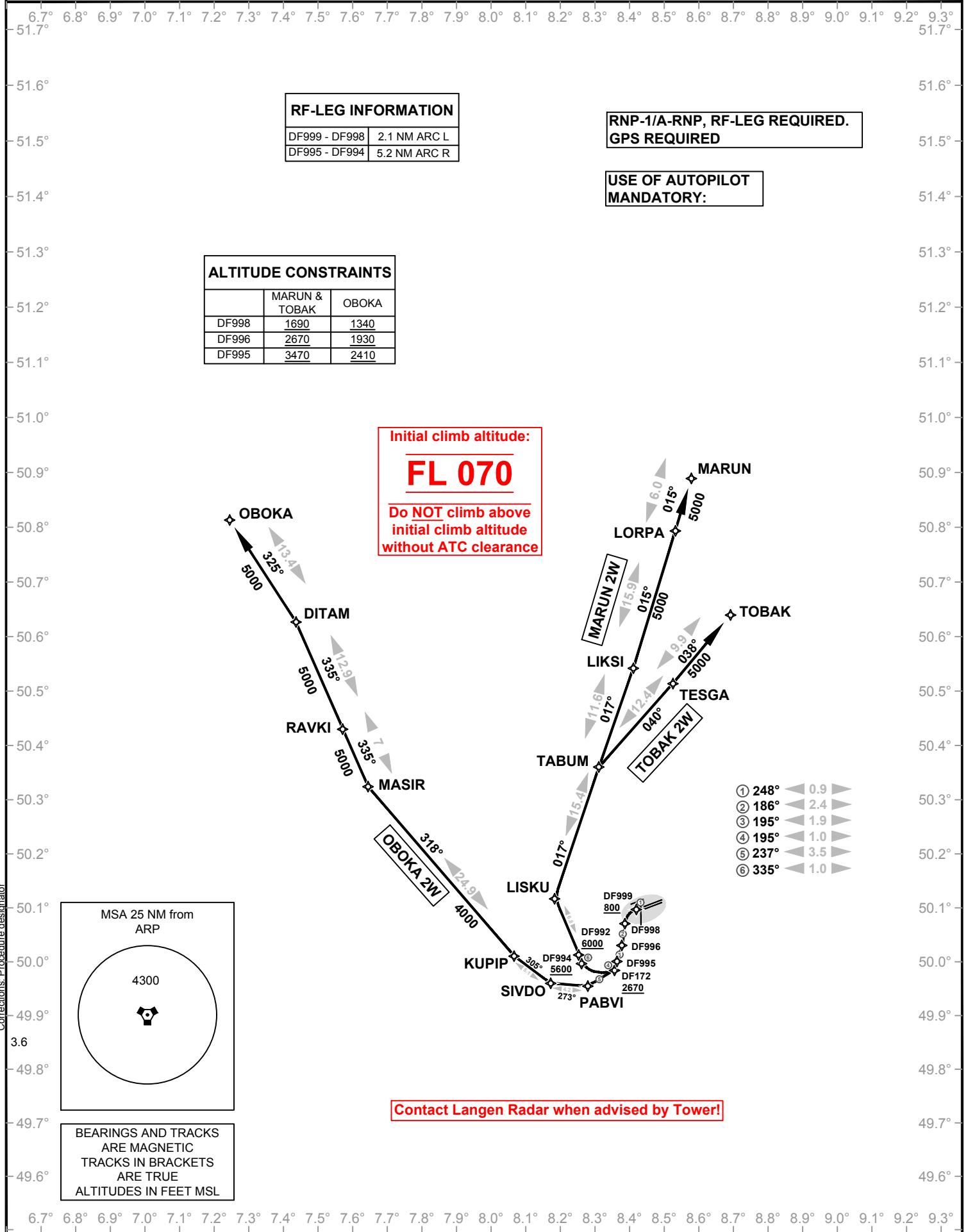
Delivery 121.900

Langen Radar(N) 120.800

Apron 121.750

Langen Radar 120.150

VAR: 2° E



RF-LEG INFORMATION	
DF999 - DF998	2.1 NM ARC L
DF995 - DF994	5.2 NM ARC R

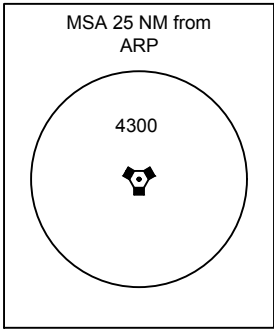
RNP-1/A-RNP, RF-LEG REQUIRED.
GPS REQUIRED

USE OF AUTOPILOT
MANDATORY:

ALTITUDE CONSTRAINTS		
	MARUN & TOBAK	OBOKA
DF998	1690	1340
DF996	2670	1930
DF995	3470	2410

Initial climb altitude:
FL 070
Do NOT climb above
initial climb altitude
without ATC clearance

- ① 248° ◀ 0.9 ▶
- ② 186° ◀ 2.4 ▶
- ③ 195° ◀ 1.9 ▶
- ④ 195° ◀ 1.0 ▶
- ⑤ 237° ◀ 3.5 ▶
- ⑥ 335° ◀ 1.0 ▶



BEARINGS AND TRACKS
ARE MAGNETIC
TRACKS IN BRACKETS
ARE TRUE
ALTITUDES IN FEET MSL

Contact Langen Radar when advised by Tower!

VATSIM Germany Standard Instrument Departure Chart

Frankfurt Main (North) EDDF

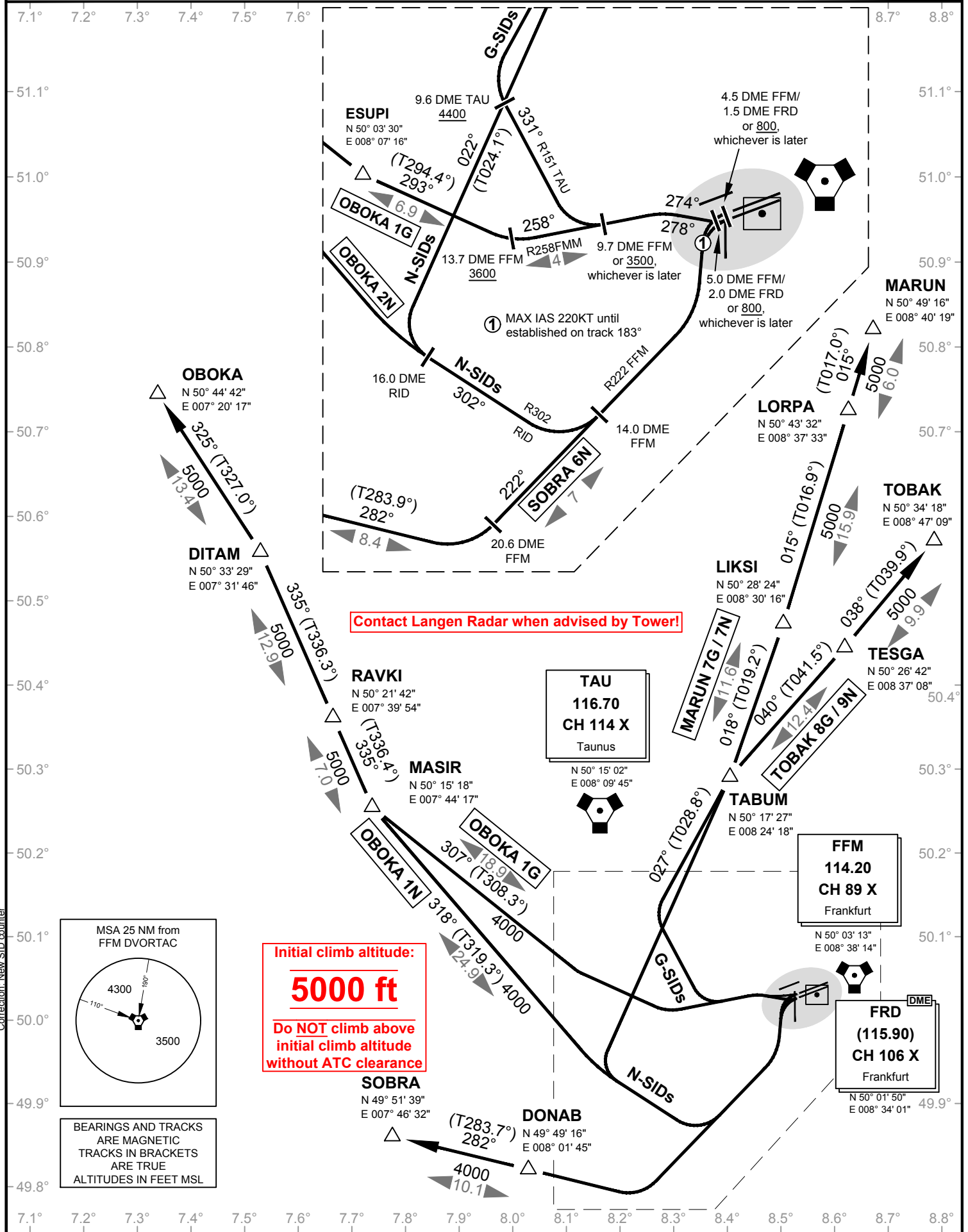
Transition Altitude: 5000 ft.

Delivery (Initial Call) 121.900	ATIS 118.020
Apron 121.750	Ground 121.800
121.850	Tower 119.900
121.950	Langen Radar 120.150

SID G / N

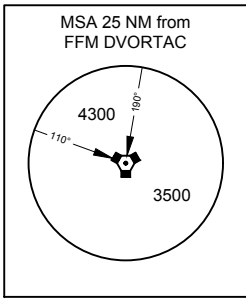
RWY 25L / 25C

VAR: 2° E



Contact Langen Radar when advised by Tower!

Initial climb altitude:
5000 ft
 Do NOT climb above
 initial climb altitude
 without ATC clearance



BEARINGS AND TRACKS
 ARE MAGNETIC
 TRACKS IN BRACKETS
 ARE TRUE
 ALTITUDES IN FEET MSL

VATSIM Germany Standard Instrument Departure Chart

Frankfurt Main (North) EDDF

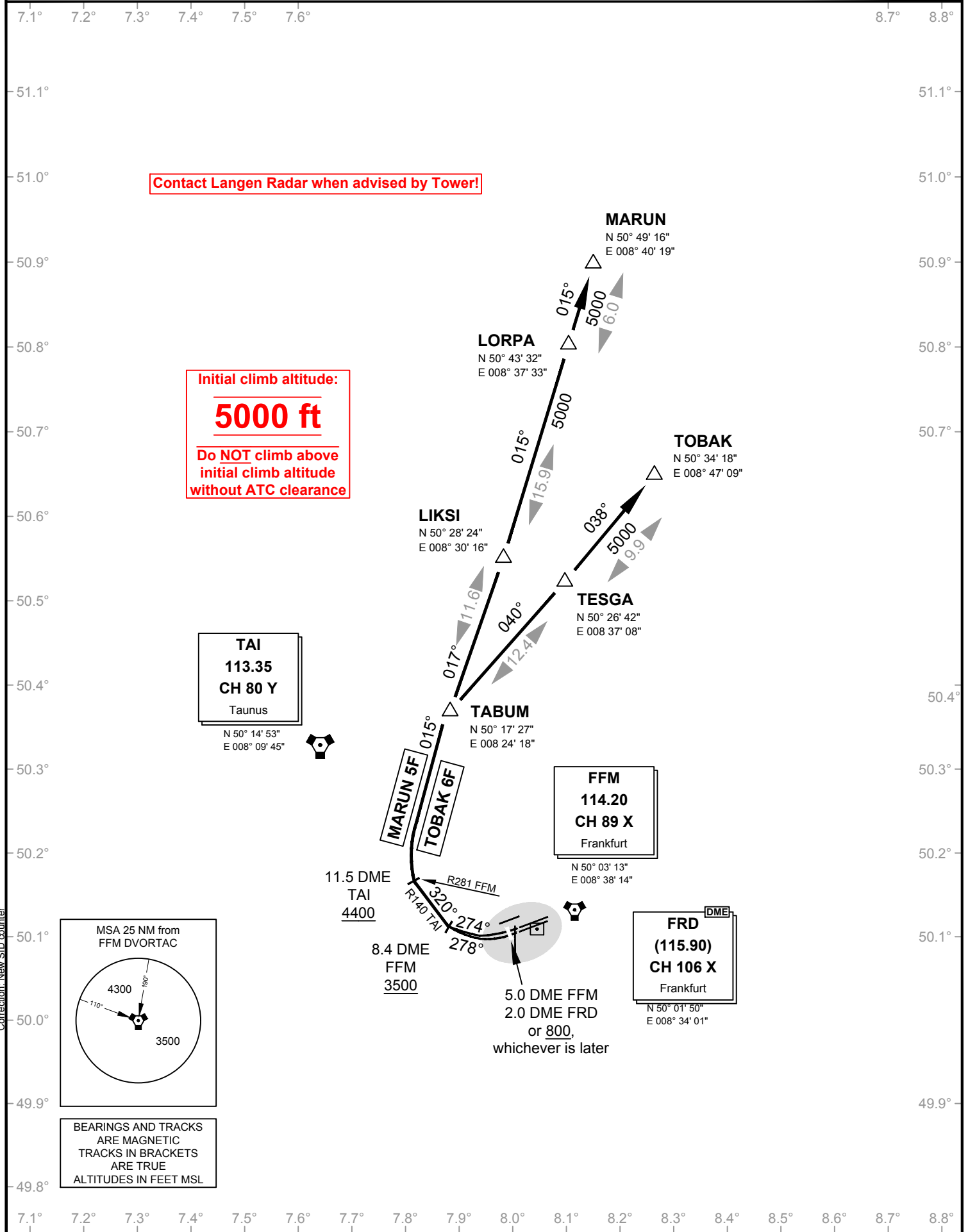
Transition Altitude: 5000 ft.

Delivery (Initial Call) 121.900
Apron 121.750
121.850
121.950

ATIS 118.020
Ground 121.800
Tower 119.900
Langen Radar 120.800

SID F (NORTH) RWY 25L / 25C

VAR: 2° E



Correction: New SID counter

VATSIM Germany Standard Instrument Departure Chart

FRANKFURT MAIN EDDF

Transition Altitude: 5000 ft

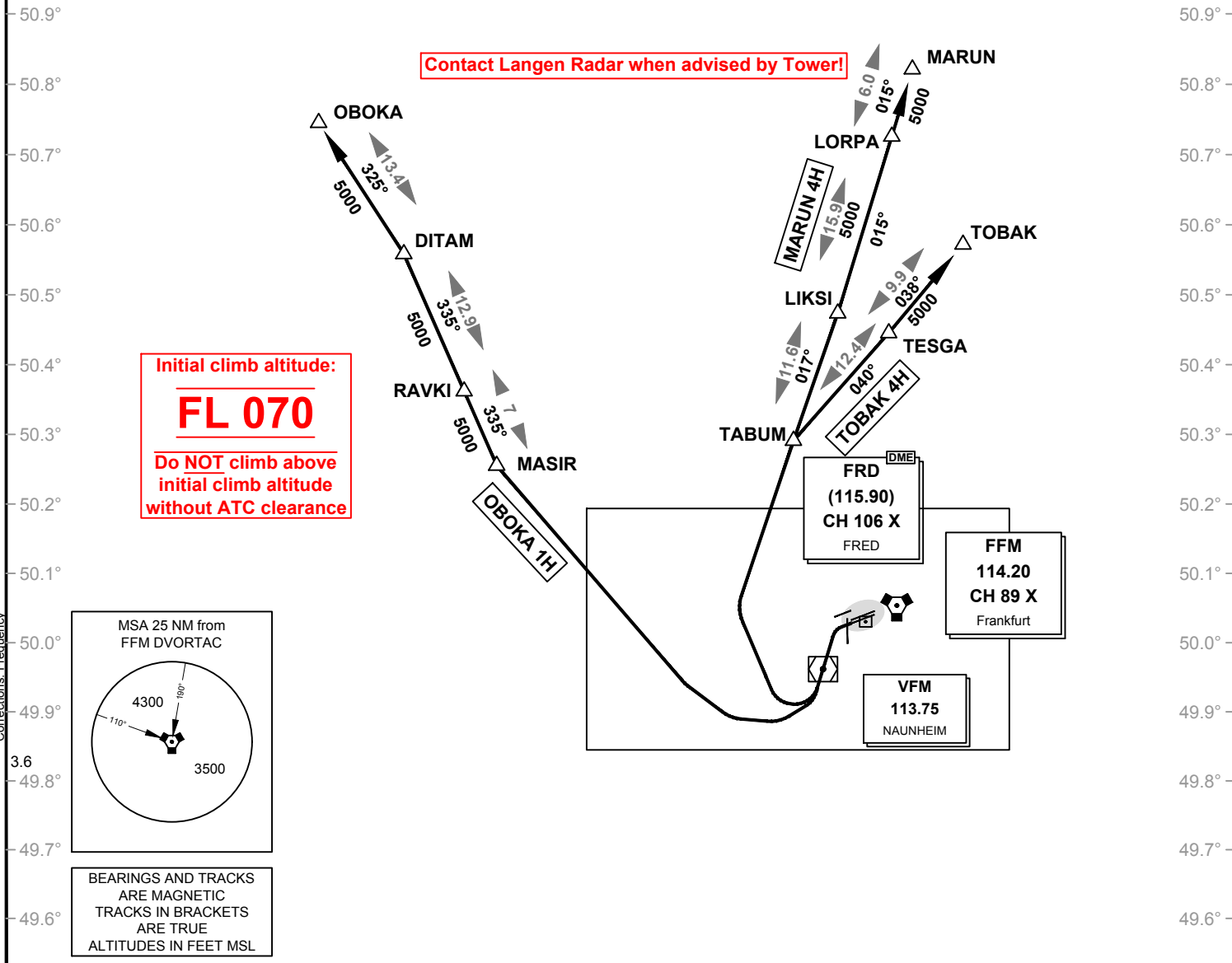
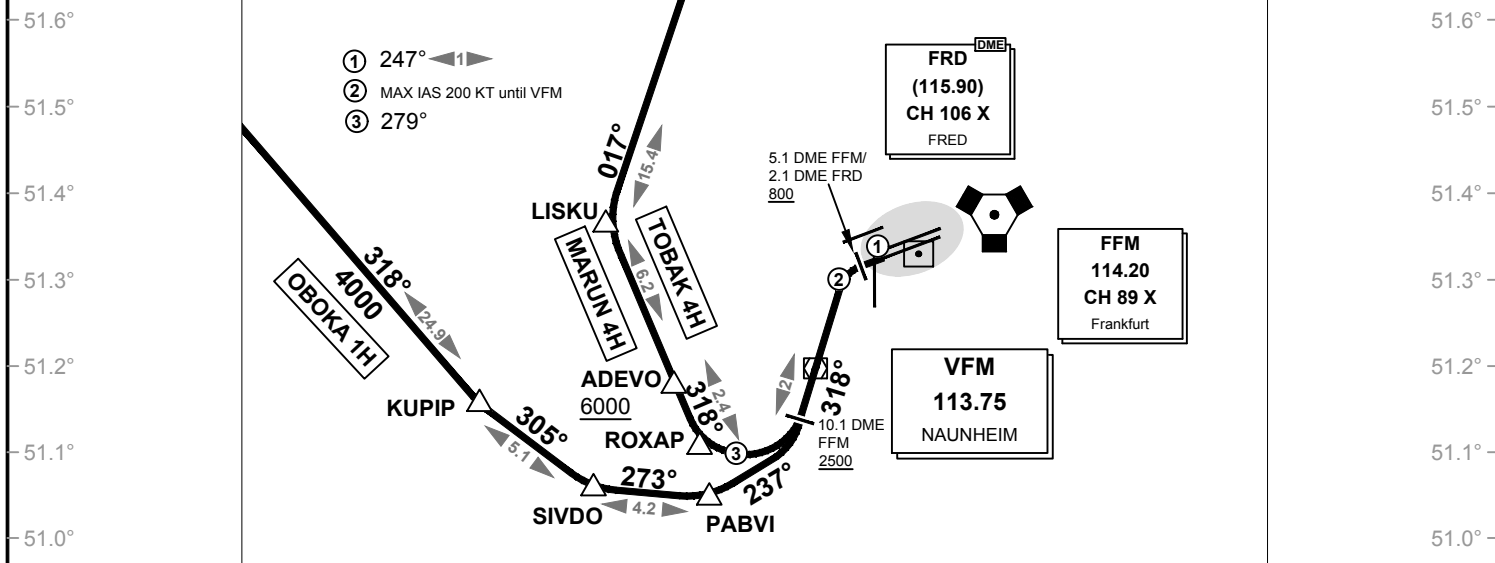
ATIS 118.050
Delivery 121.900
Apron 121.750

TOWER 119.900
Langen Radar (N) 120.800
Langen Radar 120.150

SID HOTEL RWY 25 L

VAR: 2° E

51.7° 6.8° 6.9° 7.0° 7.1° 7.2° 7.3° 7.4° 7.5° 7.6° 7.7° 7.8° 7.9° 8.0° 8.1° 8.2° 8.3° 8.4° 8.5° 8.6° 8.7° 8.8° 8.9° 9.0° 9.1° 9.2° 51.7°



Corrections: Frequency

6.8° 6.9° 7.0° 7.1° 7.2° 7.3° 7.4° 7.5° 7.6° 7.7° 7.8° 7.9° 8.0° 8.1° 8.2° 8.3° 8.4° 8.5° 8.6° 8.7° 8.8° 8.9° 9.0° 9.1° 9.2°

VATSIM Germany Standard Instrument Departure Chart

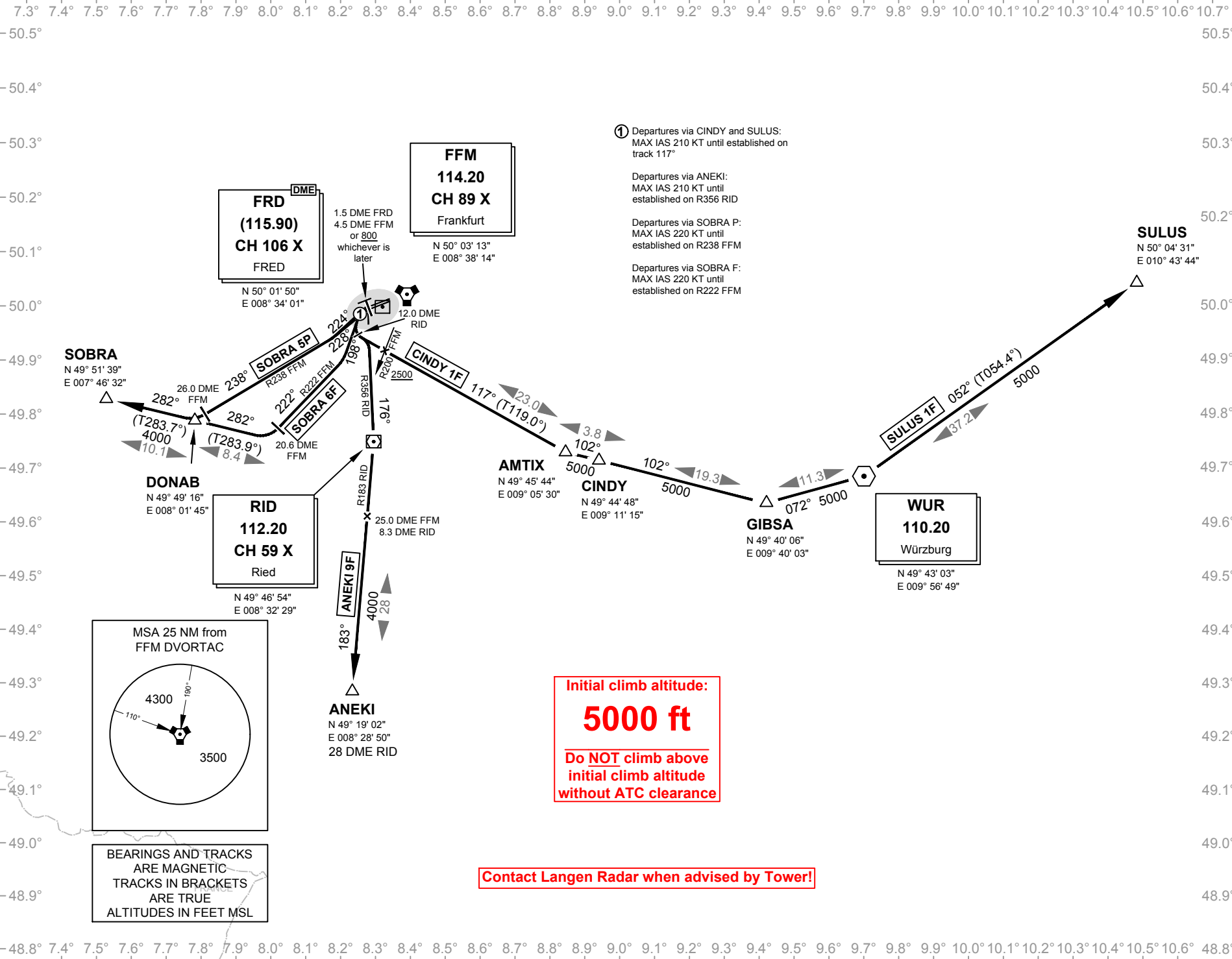
Frankfurt Main (South)
EDDF

Transition Altitude: 5000 ft.
VAR: 2° E

Delivery (Initial Call) 121.900
Apron 121.750
121.850
121.950
Langen Radar 120.150

ATIS 118.020
Ground 121.800
Tower 119.900
Langen Radar 120.150
RWY 25L / 25C
SID F / P

Correction: Procedure



① Departures via CINDY and SULUS:
MAX IAS 210 KT until established on track 117°

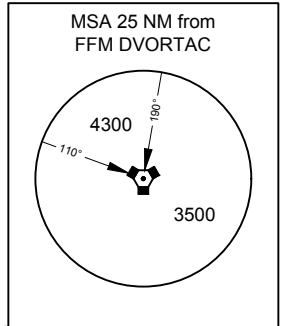
Departures via ANEKI:
MAX IAS 210 KT until established on R356 RID

Departures via SOBRA P:
MAX IAS 220 KT until established on R238 FFM

Departures via SOBRA F:
MAX IAS 220 KT until established on R222 FFM

Initial climb altitude:
5000 ft
Do NOT climb above initial climb altitude without ATC clearance

Contact Langen Radar when advised by Tower!



BEARINGS AND TRACKS ARE MAGNETIC
TRACKS IN BRACKETS ARE TRUE
ALTITUDES IN FEET MSL

Effective: 24 MAY 2019, released 01.06.2019

© VACC Germany