

VATSIM Germany Standard Instrument Departure Chart

Transition Altitude: 5000 ft.

Delivery (Initial Call) 121.900
Apron 121.750
121.850
121.950

ATIS 118.020
Ground 121.800
Tower 119.900
Langen Radar 120.150

Frankfurt Main (North) EDDF

SID DELTA
RWY 07C / 07R

Contact Langen Radar when advised by Tower!

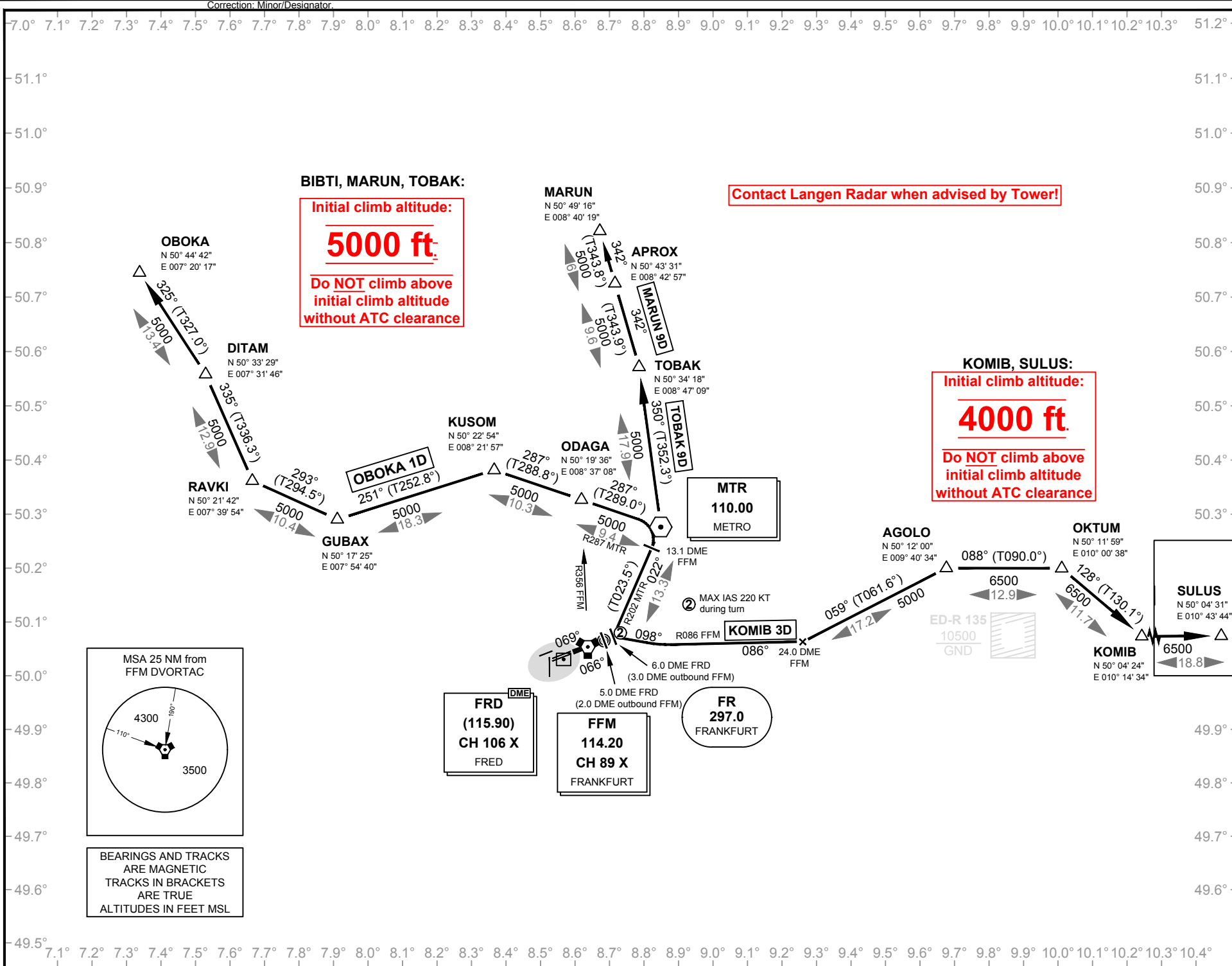
BIBTI, MARUN, TOBAK:

Initial climb altitude:
5000 ft.
Do NOT climb above
initial climb altitude
without ATC clearance

KOMIB, SULUS:
Initial climb altitude:
4000 ft.
Do NOT climb above
initial climb altitude
without ATC clearance

Effective: 13 OCT 2016, released 20 02.2018

© VACC Germany



For flight simulator use only. Not to be used for real world flight.

VATSIM Germany Standard Instrument Departure Chart

Frankfurt Main (North) EDDF

Transition Altitude: 5000 ft.

Delivery (Initial Call) 121.900

ATIS 118.020

Apron 121.750

Ground 121.800

121.850

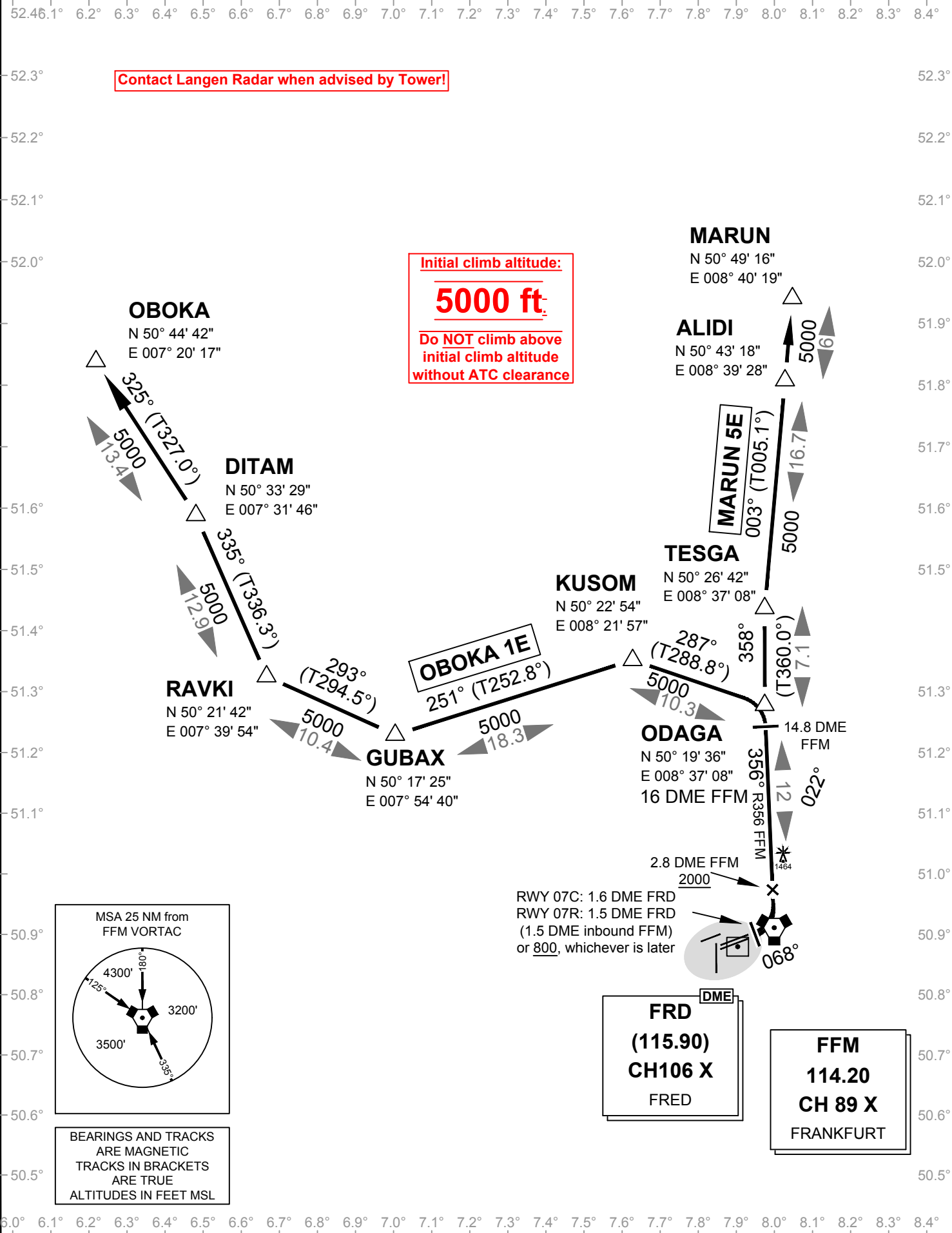
Tower 119.900

121.950

Langen Radar 120.150

VAR: 2° E

SID ECHO RWY 07C / 07R



For flight simulator use only. Not to be used for real world flight.

VATSIM Germany Standard Instrument Departure Chart

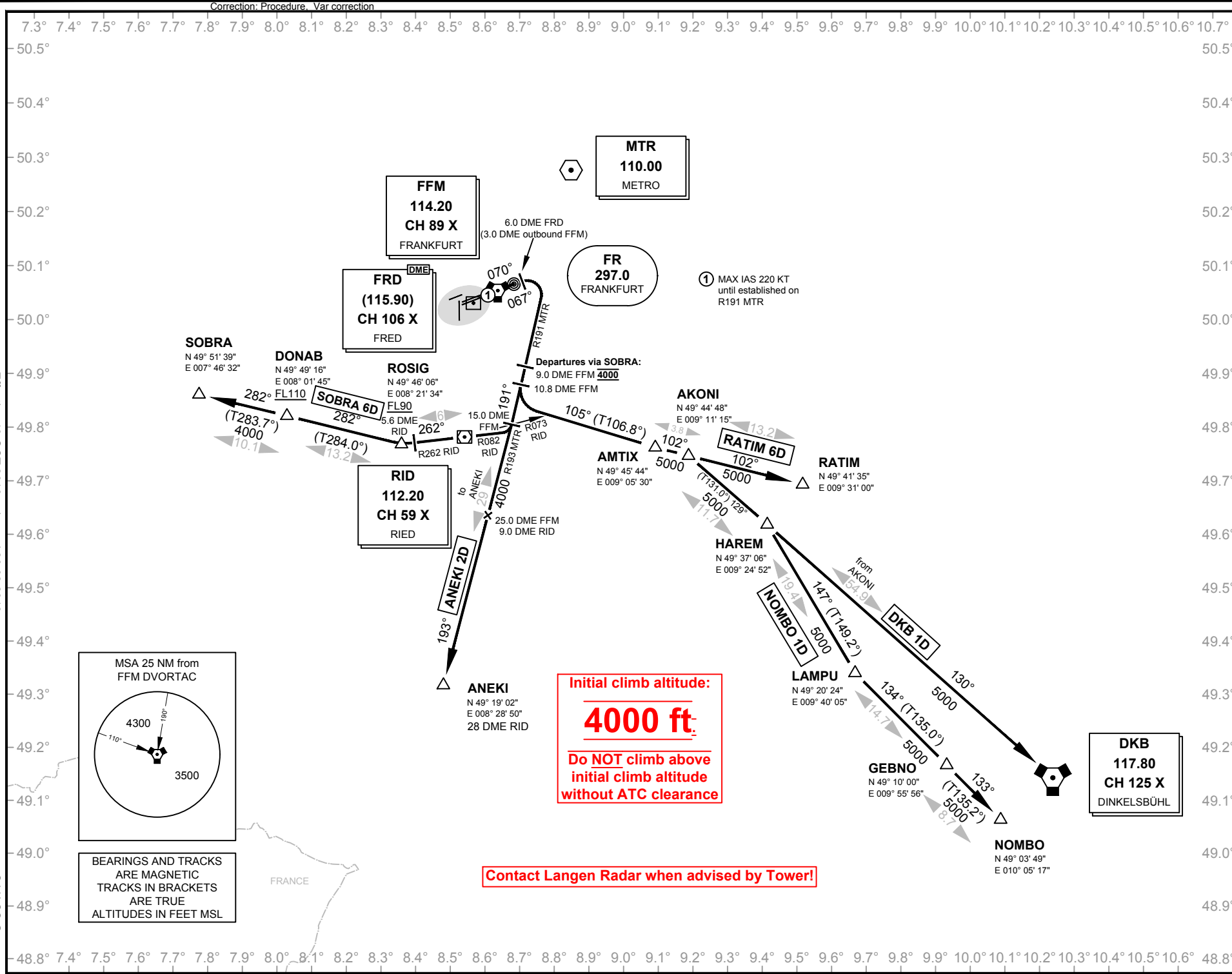
Frankfurt Main (South) EDDF

Transition Altitude: 5000 ft.
VAR: 2° E

Delivery (Initial Call)
Apron
121.900
121.750
121.850
121.950

ATIS 118.020
Ground 121.800
Tower 119.900
Langen Radar 120.150

SID DELTA RWY 07C / 07R



Effective: 13 OCT 2016, released 20 02 2018

© VAACC Germany

VATSIM Germany Standard Instrument Departure Chart

Frankfurt Main (South) EDDF

Transition Altitude: 5000 ft.

Delivery (Initial Call) 121.900
Apron 121.750
121.850
121.950

ATIS 118.020
Ground 121.800
Tower 119.900
Langen Radar 120.150

SID ECHO

RWY 07C / 07R

VAR: 2° E

Contact Langen Radar when advised by Tower!

① Departures via SOBRA, ANEKI,
MAX IAS 220 KT until established on
R198 FFM

Departures via RATIM, NOMBO, DKB
MAX IAS 220 KT until established on
R191 MTR

② Departures via SOBRA:
4000

FRD
(115.90)
CH106 X
FRED

FFM
114.20
CH 89 X
FRANKFURT

RID
112.20
CH 59 X
RIED

SOBRA
N 49° 51' 39"
E 007° 46' 32"

DONAB
N 49° 49' 16"
E 008° 01' 45"
FL110

ROSIG
N 49° 46' 06"
E 008° 21' 34"
FL90

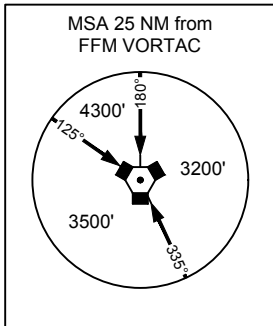
ANEKI
N 49° 19' 02"
E 008° 28' 50"
28 DME RID

Initial climb altitude:

4000 ft.

Do NOT climb above
initial climb altitude
without ATC clearance

MSA 25 NM from
FFM VORTAC



BEARINGS AND TRACKS
ARE MAGNETIC
TRACKS IN BRACKETS
ARE TRUE
ALTITUDES IN FEET MSL
ALTITUDES IN BRACKETS
ARE OPERATIONAL