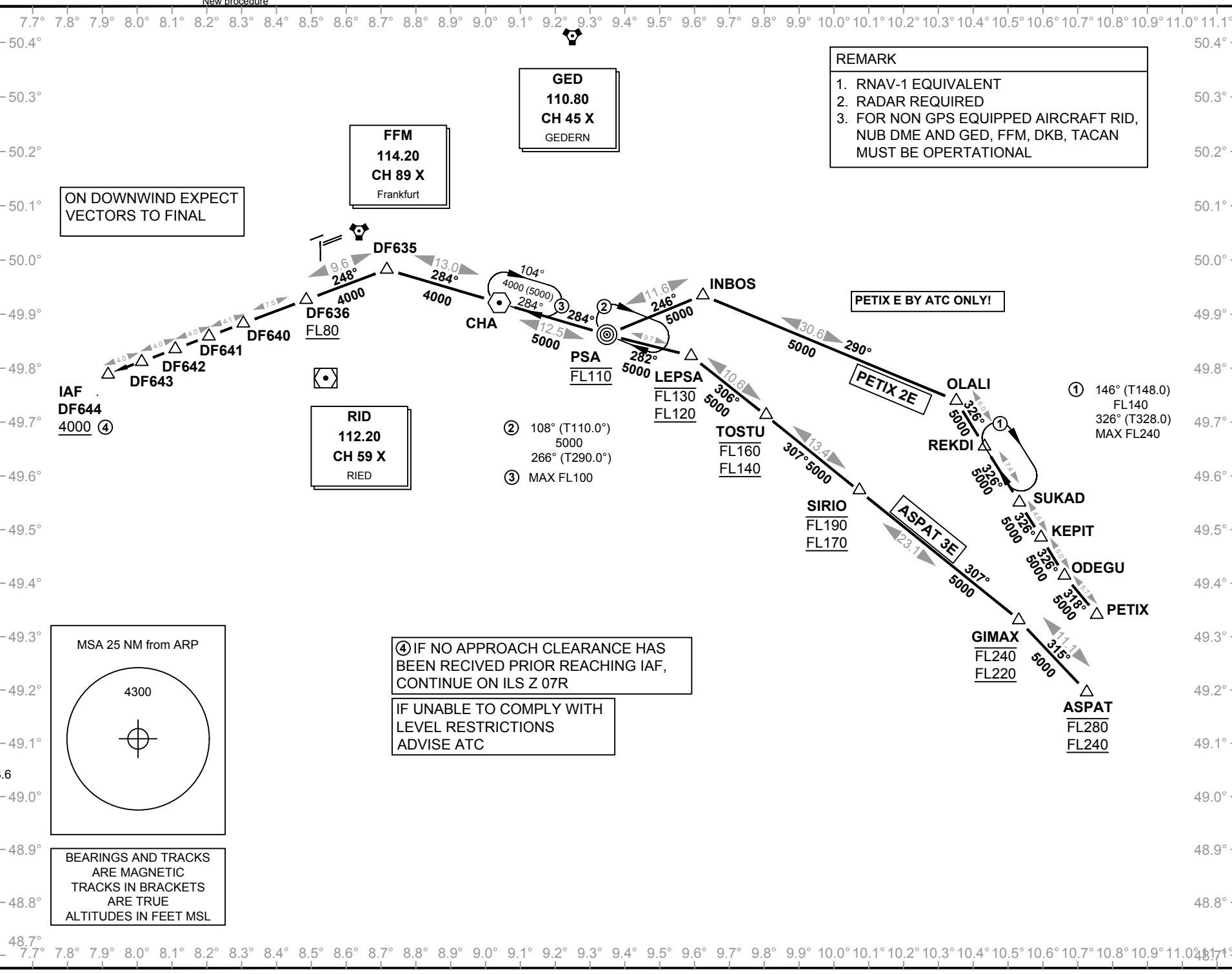


VATSIM Germany Standard Instrument Arrival Chart

Transition Altitude: 5000 ft.
 VAR: 2° E
 ATIS 118.025
 LANGEN RADAR (N) 120.800
 LANGEN RADAR (S) 125.350
 DIRECTOR (N) 127.270
 DIRECTOR (S) 118.500
 TOWER 119.900

Frankfurt Main
 EDDF
 STAR PETIX/ASPAT
 RWY 07R

REMARK
 1. RNAV-1 EQUIVALENT
 2. RADAR REQUIRED
 3. FOR NON GPS EQUIPPED AIRCRAFT RID, NUB DME AND GED, FFM, DKB, TACAN MUST BE OPERATIONAL



Effective: 30 JUN 2017, released 22.07.2018

© VACC Germany

For flight simulator use only. Not to be used for real world flight.

VATSIM Germany Standard Instrument Arrival Chart

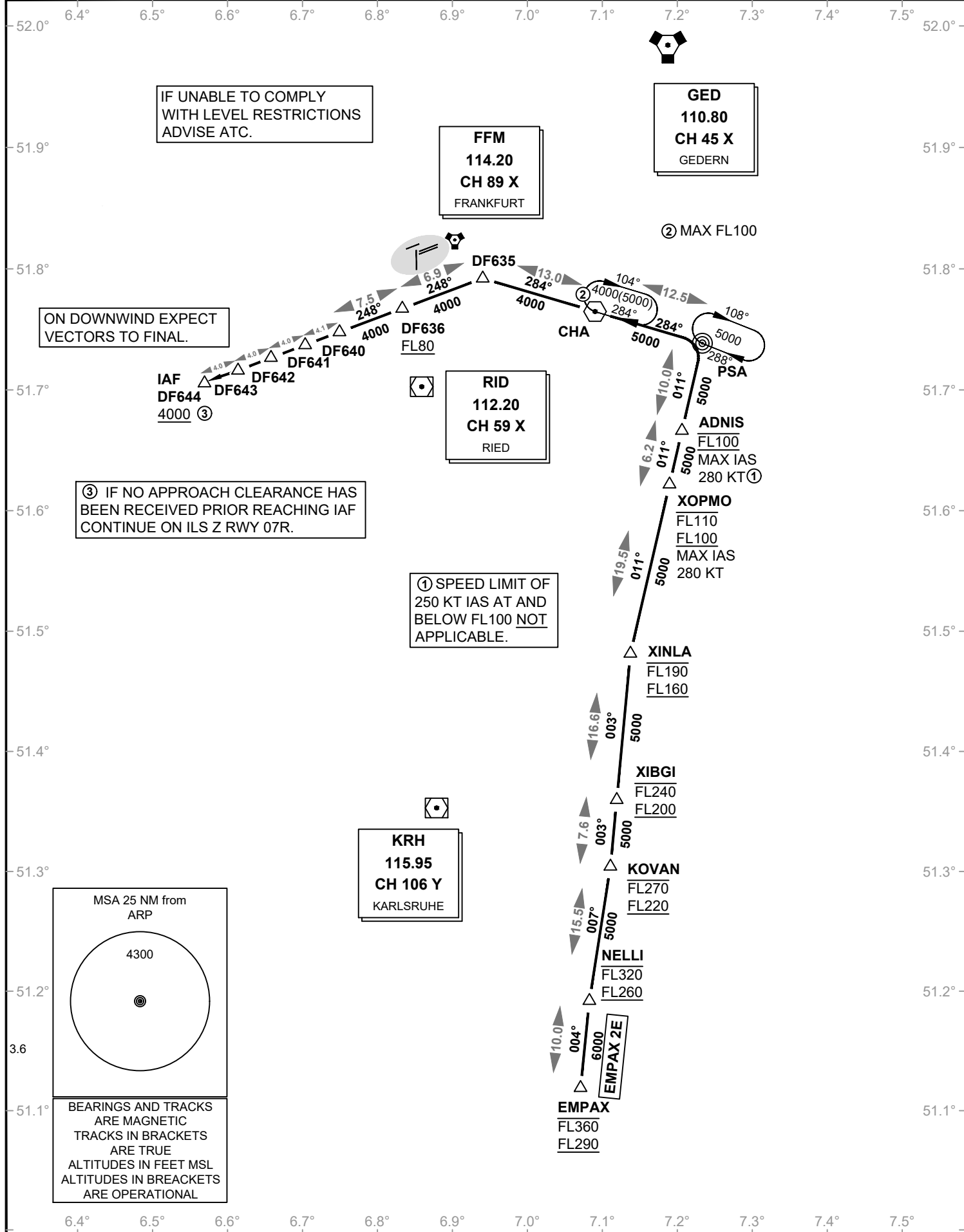
Frankfurt EDDF EMPAX E RWY 07R

Transition Altitude: 5000 ft

ATIS 118.025
Langen Radar (N) 120.800
Langen Radar (S) 125.350

Director 127.270
Tower 119.900
Ground 121.750

VAR: 2° E



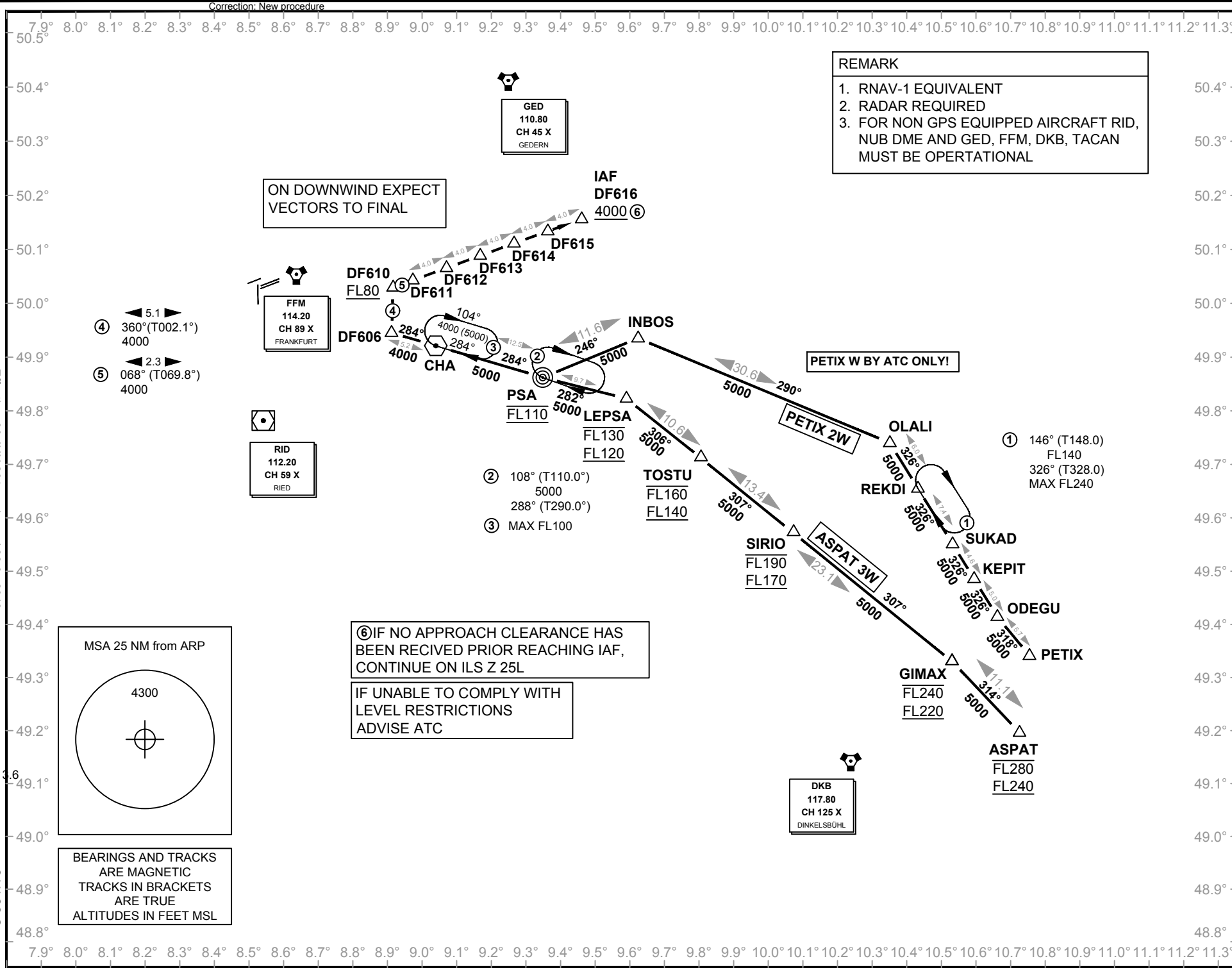
VATSIM Germany Standard Instrument Arrival Chart

For flight simulator use only. Not to be used for real world flight.

Transition Altitude: 5000 ft.
 VAR: 2° E
 ATIS 118.020
 LANGEN RADAR (N) 120.800
 LANGEN RADAR (S) 125.350
 DIRECTOR (N) 127.270
 DIRECTOR (S) 118.500
 TOWER 119.900

Frankfurt Main
 EDDF
 STAR PETIX/ASPAT
 RWY 25L

REMARK
 1. RNAV-1 EQUIVALENT
 2. RADAR REQUIRED
 3. FOR NON GPS EQUIPPED AIRCRAFT RID, NUB DME AND GED, FFM, DKB, TACAN MUST BE OPERATIONAL

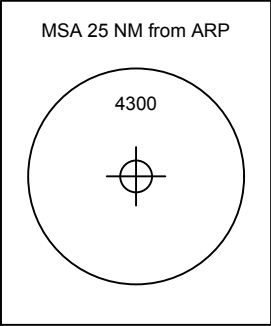


ON DOWNWIND EXPECT VECTORS TO FINAL

PETIX W BY ATC ONLY!

⑥ IF NO APPROACH CLEARANCE HAS BEEN RECIVED PRIOR REACHING IAF, CONTINUE ON ILS Z 25L

IF UNABLE TO COMPLY WITH LEVEL RESTRICTIONS ADVISE ATC



BEARINGS AND TRACKS ARE MAGNETIC
 TRACKS IN BRACKETS ARE TRUE
 ALTITUDES IN FEET MSL

Effective: 30 JUN 2017, released 22.07.2018

© VACC Germany

