

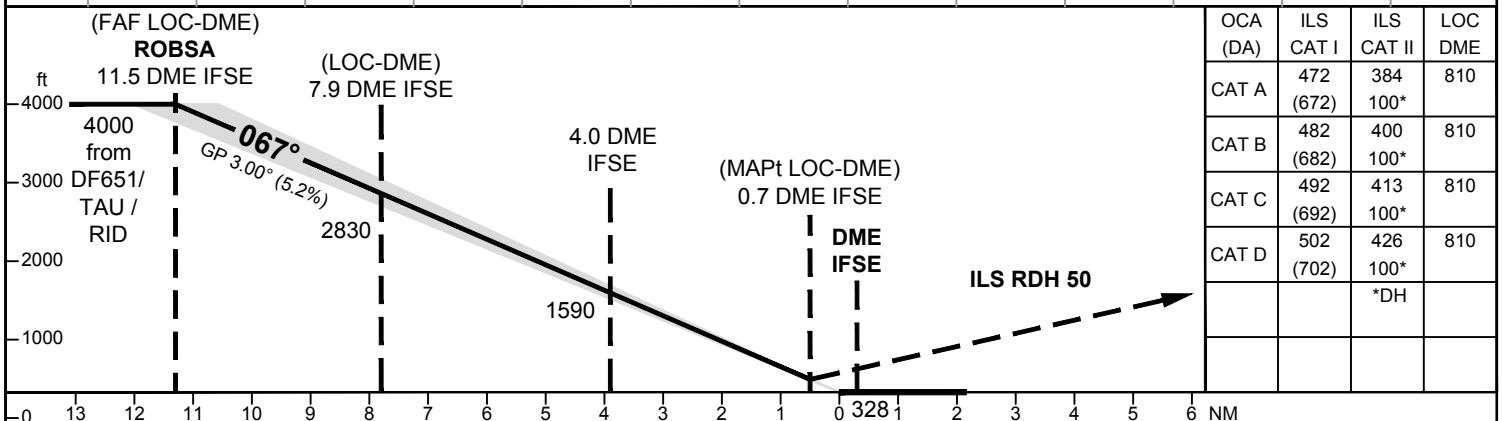
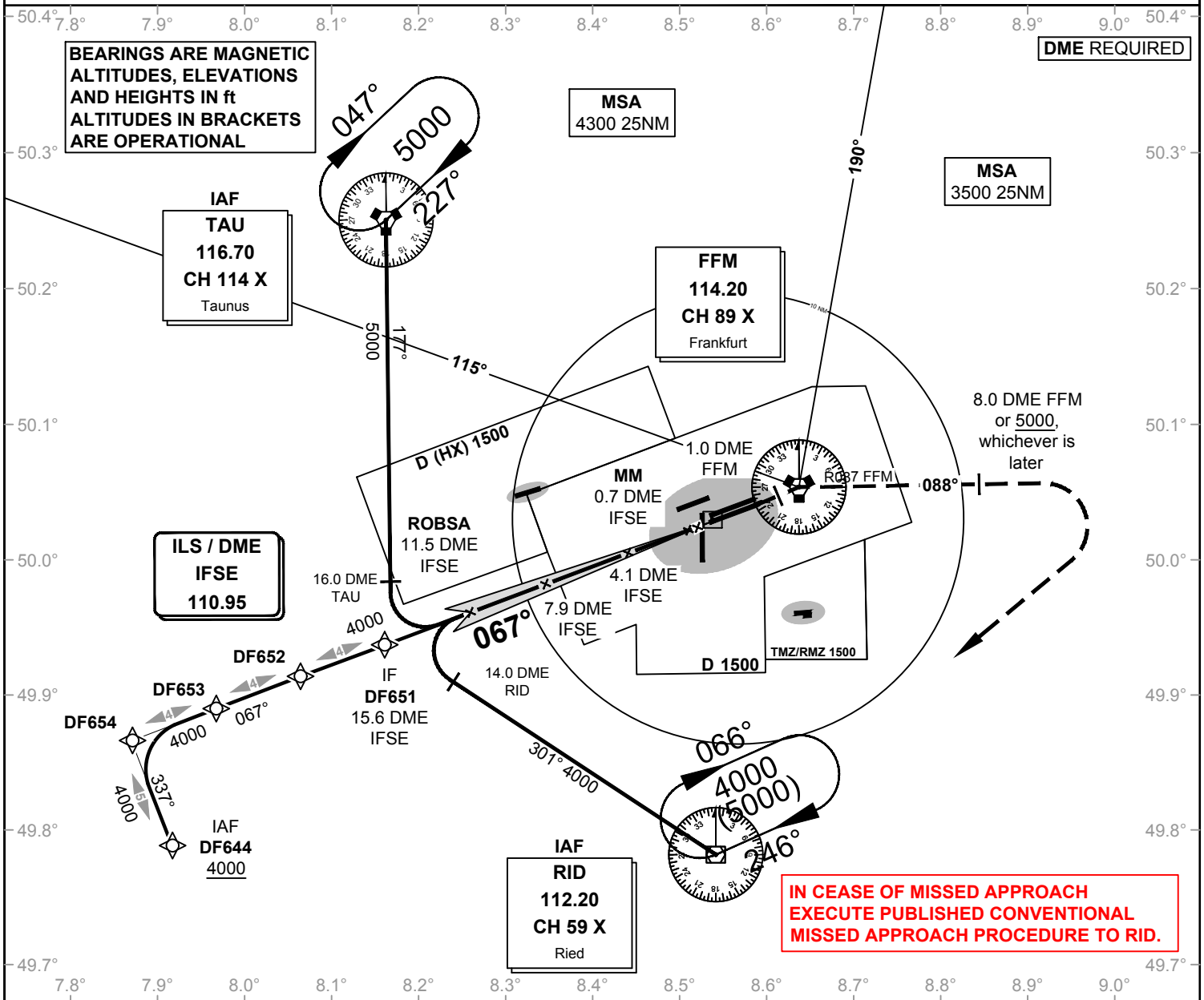
VATSIM Germany Instrument Approach Chart

Frankfurt Main EDDF

Elevation: THR07R ELEV 328
 Langen Radar (N) 120.800
 Langen Radar (S) 125.350
 Director (N) 127.270
 Director (S) 118.500
 Tower 119.900
 Tower (W) 124.850
 ATIS 118.020

**ILS Z CAT II & III or LOC Z
RWY 07R**

VAR: 2° E



MISSED APPROACH: Climb straight ahead to 1.0 DME inbound FFM; RT, intercept R087 FFM outbound to 8.0 DME FFM or 5000, whichever is later; RT to RID DVOR/DME, maintain 5000.

DME IFSE	11	10	9	8	7	6	5	4	3	2	GS	kt	80	100	120	140	160	180
DIST THR	10.8	9.8	8.8	7.8	6.8	5.8	4.8	3.8	2.8	1.8	4.0 DME IFSE - THR (3.9 NM)	MIN:SEC	2:56	2:20	1:57	1:40	1:28	1:18
ALTITUDE	3820	3500	3180	2870	2550	2230	1910	1590	1270	960	Rate of descent (5.2%)	ft / MIN	420	530	640	740	850	960

CAT IIIA AND CAT IIIB (MNM RVR 75m) APPROVED.

LOC-DME: Timing not authorized for defining the MAPt.

VATSIM Germany Instrument Approach Chart

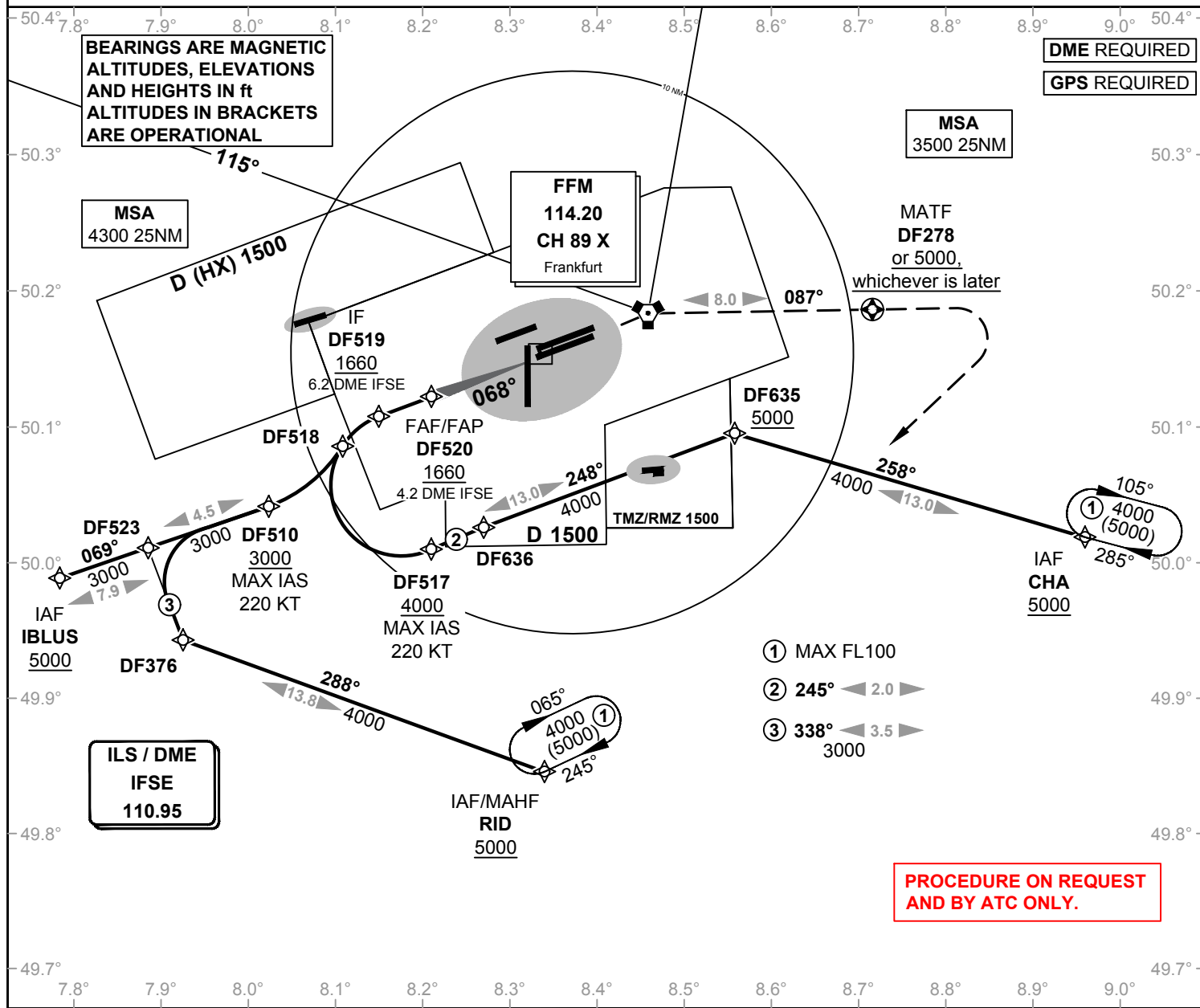
Frankfurt Main EDDF

Elevation: THR07R ELEV 328
VAR: 2° E

Langen Radar (N) 120.800
Langen Radar (S) 125.350
Director (N) 127.270
Director (S) 118.500

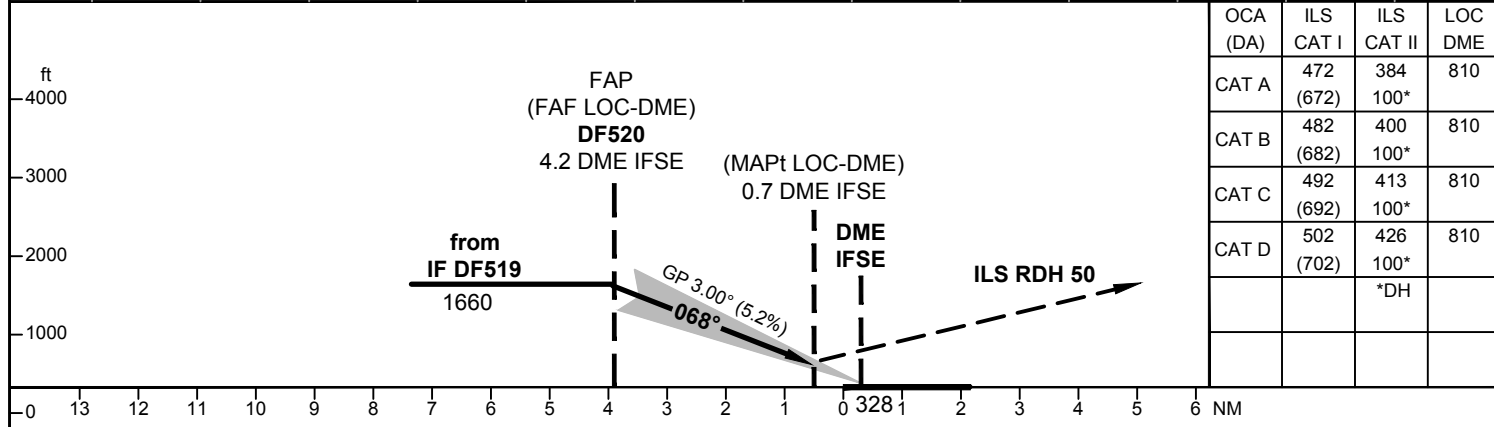
Tower 119.900
Tower (W) 124.850
ATIS 118.020

ILS X CAT II & III or LOC X RWY 07R



- ① MAX FL100
- ② 245° ◀ 2.0
- ③ 338° ◀ 3.5

**PROCEDURE ON REQUEST
AND BY ATC ONLY.**



MISSED APPROACH: Climb on track 067° to FFM; on course 087° to DF278 or 5000, whichever is later; RT direct to RID, maintain 5000.

DME IFSE	11	10	9	8	7	6	5	4	3	2	GS	kt	80	100	120	140	160	180
DIST THR	10.8	9.8	8.8	7.8	6.8	5.8	4.8	3.8	2.8	1.8	4.0 DME IFSE - THR (3.9 NM)	MIN:SEC	2:56	2:20	1:57	1:40	1:28	1:18
ALTITUDE	3820	3500	3180	2870	2550	2230	1910	1590	1270	960	Rate of descent (5.2%)	ft / MIN	420	530	640	740	850	960

CAT IIIA AND CAT IIIB (MNM RVR 75m) APPROVED.

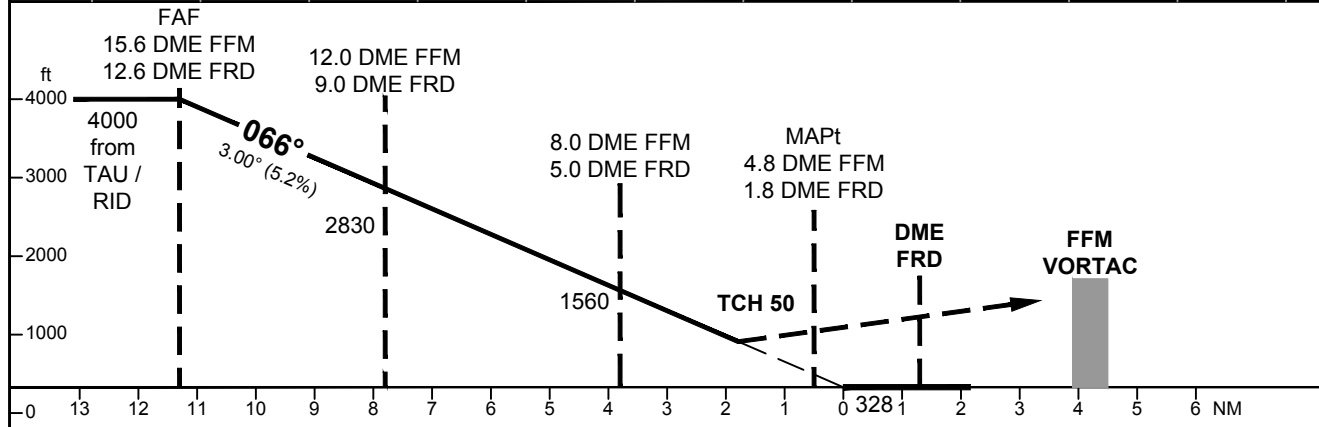
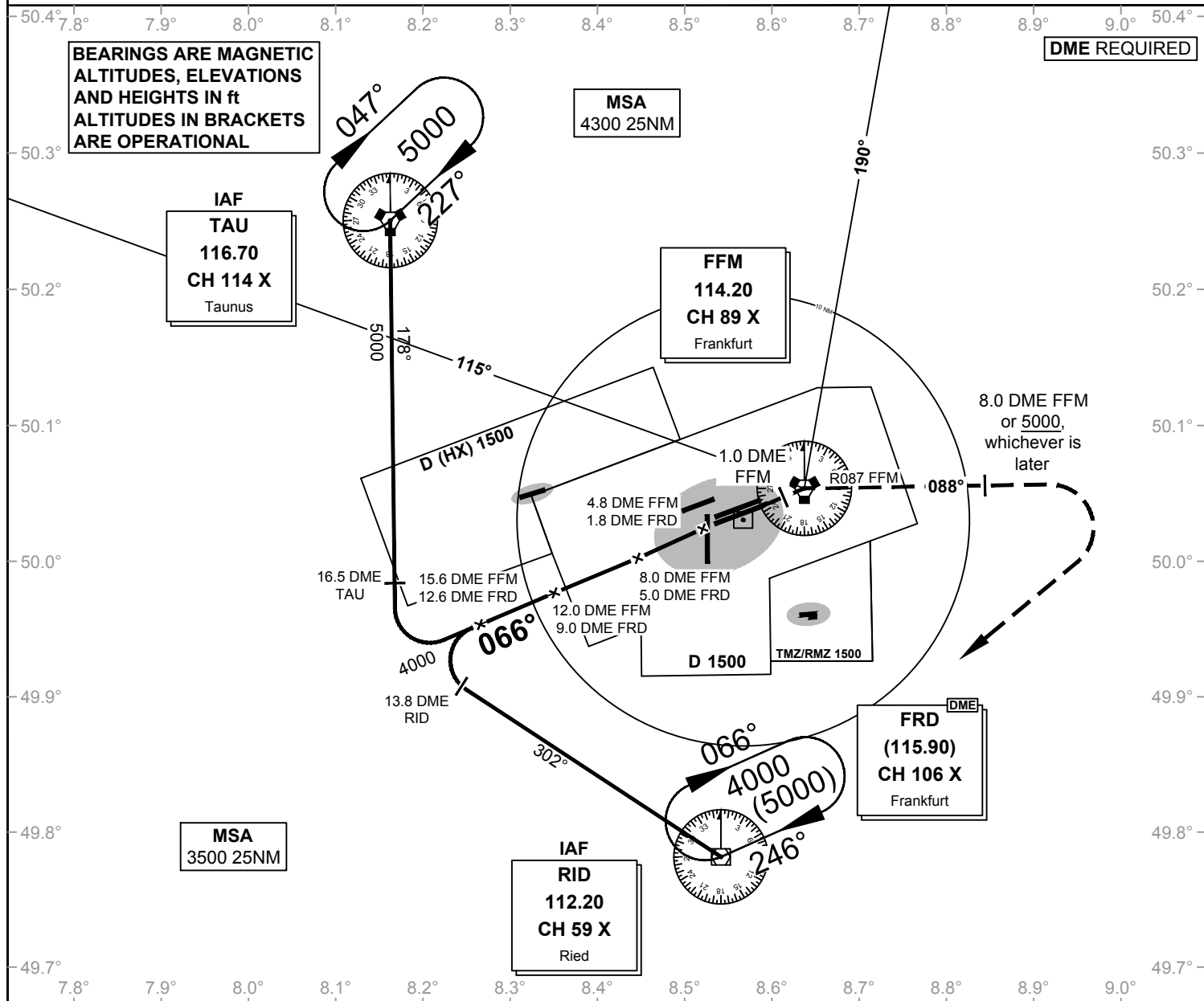
LOC-DME: Timing not authorized for defining the MAPt.

VATSIM Germany Instrument Approach Chart

**Frankfurt Main
EDDF
VOR
RWY 07R**

Elevation: THR07R ELEV 328
 Langen Radar (N) 120.800
 Langen Radar (S) 125.350
 Director (N) 127.270
 Director (S) 118.500
 Tower 119.900
 Tower (W) 124.850
 ATIS 118.020

VAR: 1° E



OCA (OCH)	VOR/DME
CAT A	800 (480)
CAT B	800 (480)
CAT C	810 (480)
CAT D	810 (480)

MISSED APPROACH: Climb straight ahead to 1.0 DME inbound FFM; RT, intercept R088 FFM outbound to 8.0 DME FFM or 5000, whichever is later; RT to RID DVOR/DME, maintain 5000.

DME FFM	15	14	13	12	11	10	9	8	7	6	GS	kt	80	100	120	140	160	180
DIST THR	10.7	9.7	8.7	7.7	6.7	5.7	4.7	3.7	2.7	1.7	8DME FFM / 5DME FRD - MAPt(3.2NM)	MIN:SEC	2:24	1:55	1:36	1:22	1:12	1:06
ALTITUDE	3790	3470	3150	2830	2520	2200	1880	1560	1240	920	Rate of descent (5.2%)	ft / MIN	420	530	640	740	850	960

Timing not authorized for defining the MAPt.

VATSIM Germany Instrument Approach Chart

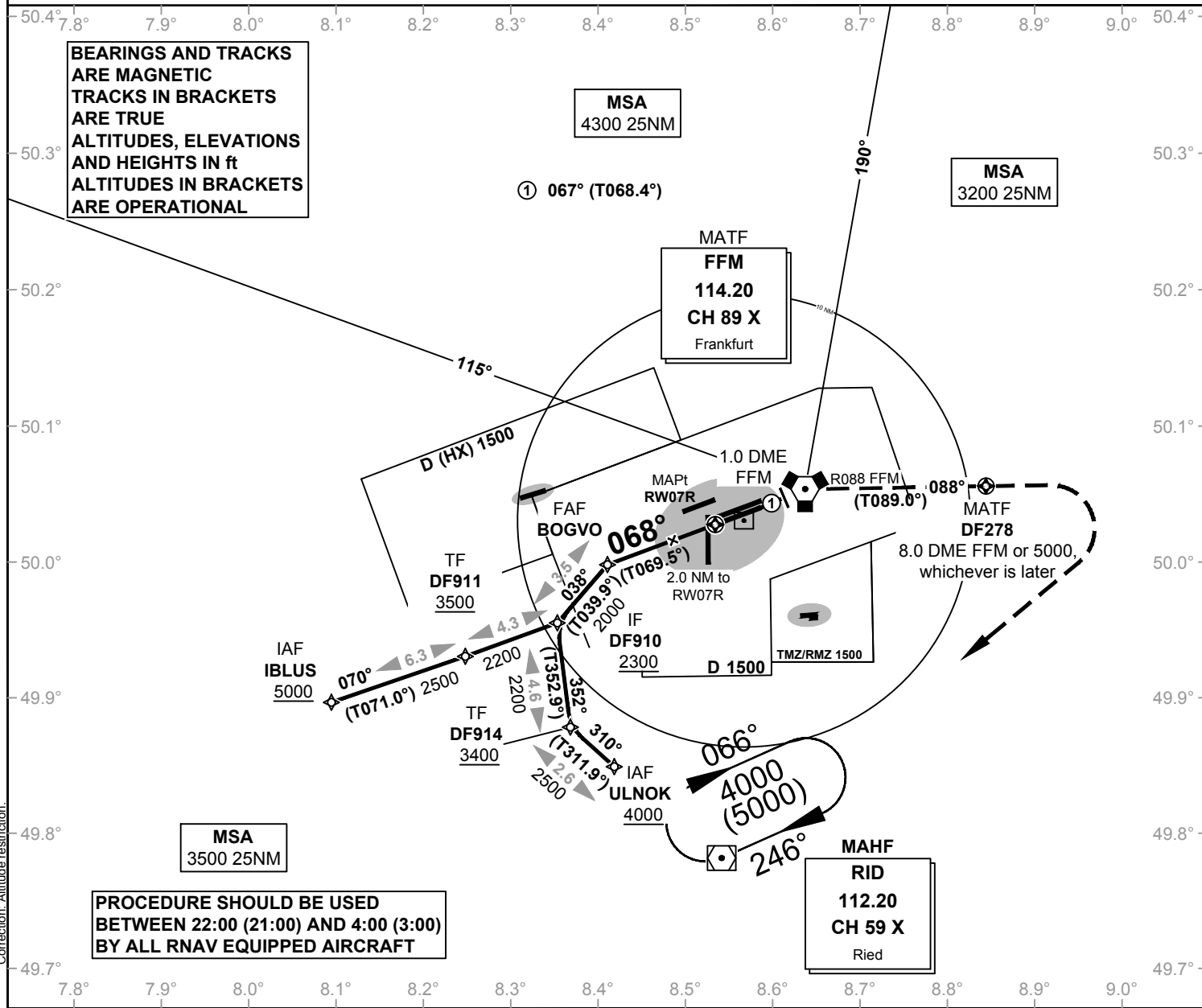
**Frankfurt Main
EDDF
RNAV (GPS) Y
RWY 07R**

Elevation: THR07R ELEV 328
VAR: 1° E

Langen Radar (N) 120.800
Langen Radar (S) 125.350
Director (N) 127.270
Director (S) 118.500

Tower 119.900
Tower (W) 124.850
ATIS 118.020

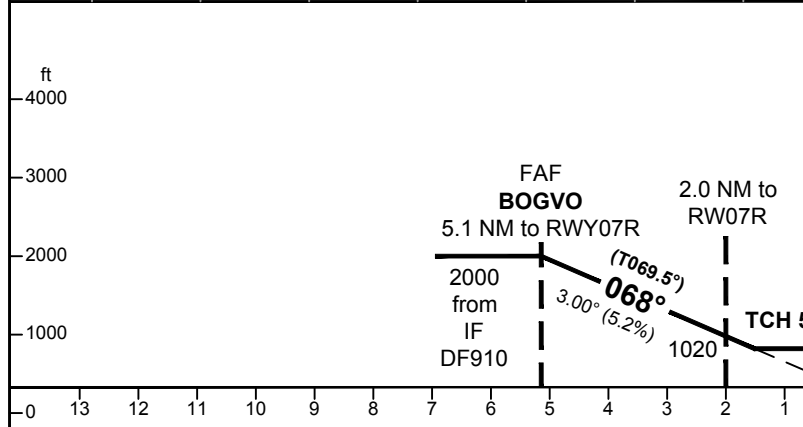
**BEARINGS AND TRACKS
ARE MAGNETIC
TRACKS IN BRACKETS
ARE TRUE
ALTITUDES, ELEVATIONS
AND HEIGHTS IN ft
ALTITUDES IN BRACKETS
ARE OPERATIONAL**



**PROCEDURE SHOULD BE USED
BETWEEN 22:00 (21:00) AND 4:00 (3:00)
BY ALL RNAV EQUIPPED AIRCRAFT**

NON-RNAV MISSED APPROACH:
Climb straight ahead to 1.0 DME
inbound FFM; RT, intercept R088 FFM
outbound to 8.0 DME FFM or 5000,
whichever is later; RT to RID
DVOR/DME, maintain 5000.

OCA (OCH)	LNAV
CAT A	810 (480)
CAT B	810 (480)
CAT C	830 (500)
CAT D	840 (510)



MISSED APPROACH: Climb on track 067° to FFM; RT on track 088° to DF278 or 5000, whichever is later; RT to RID, maintain 5000.
RNAV (GPS) FFM[R] - DF278[A5000; R] - RID[A5000]

DIST THR	4	3	2						
ALTITUDE	1660	1340	1020						

GS	kt	80	100	120	140	160	180
TIXAK - RW07C (5.1 NM)	MIN:SEC	3:50	3:04	2:33	2:11	1:55	1:42
Rate of descent (5.2%)	ft / MIN	420	530	640	740	850	960

Timing not authorized for defining the MAPt.

VATSIM Germany Instrument Approach Chart

Frankfurt Main EDDF

RNAV (GPS) Z RWY 07R

Elevation: THR07R ELEV 328

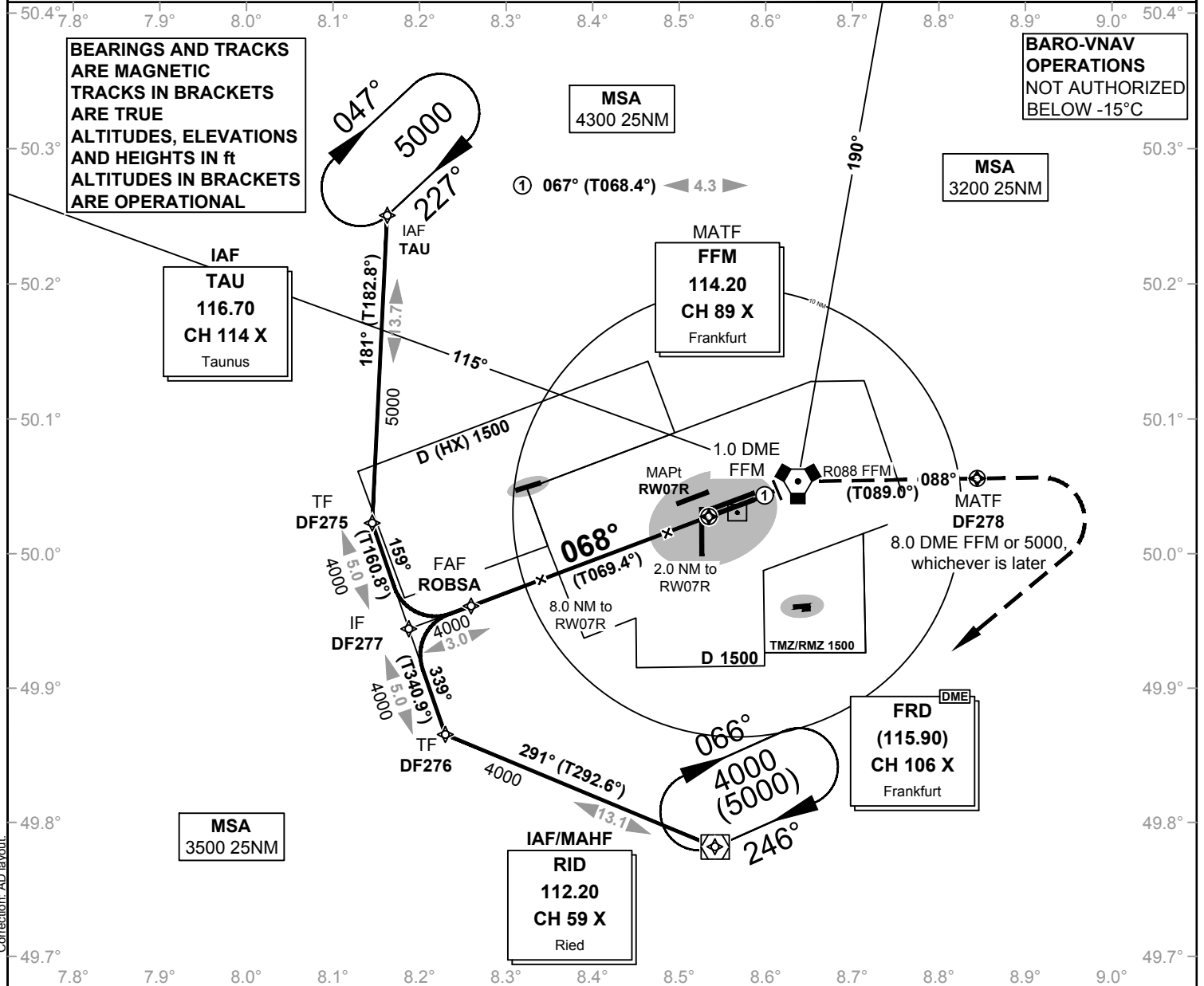
Langen Radar (N) 120.800
Langen Radar (S) 125.350
Director (N) 127.270
Director (S) 118.500

ATIS Tower 119.900
Tower (W) 124.850
ATIS 118.020

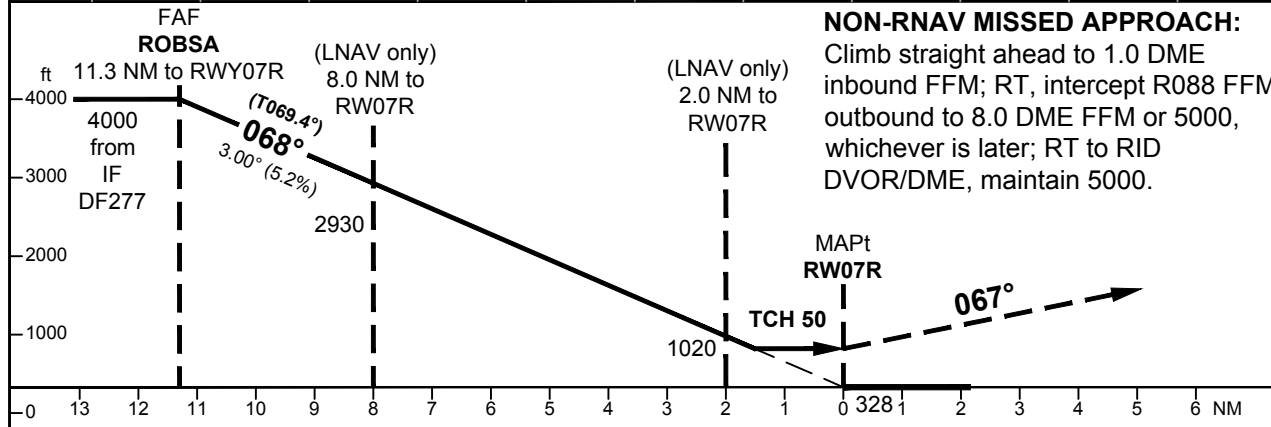
VAR: 1°E

**BEARINGS AND TRACKS ARE MAGNETIC
TRACKS IN BRACKETS ARE TRUE
ALTITUDES, ELEVATIONS AND HEIGHTS IN ft
ALTITUDES IN BRACKETS ARE OPERATIONAL**

**BARO-VNAV OPERATIONS
NOT AUTHORIZED BELOW -15°C**



Correction: AD layout.



NON-RNAV MISSED APPROACH:
Climb straight ahead to 1.0 DME inbound FFM; RT, intercept R088 FFM outbound to 8.0 DME FFM or 5000, whichever is later; RT to RID DVOR/DME, maintain 5000.

OCA (OCH)	LNAV	LNAV / VNAV
CAT A	810 (480)	680 (350)
CAT B	810 (480)	680 (350)
CAT C	830 (500)	680 (350)
CAT D	840 (510)	680 (350)

MISSED APPROACH: Climb on track 067° to FFM; RT on track 088° to DF278 or 5000, whichever is later; RT to RID, maintain 5000. RNAV (GPS) FFM[R] - DF278[A5000; R] - RID[A5000]

DIST THR	11	10	9	8	7	6	5	4	3	2	GS	kt	80	100	120	140	160	180
ALTITUDE	3890	3570	3250	2930	2610	2290	1970	1660	1340	1020	ROBSA - RWY07R (11.3 NM)	MIN:SEC	8:29	6:47	5:39	4:51	4:14	3:46
											Rate of descent (5.2%)	ft / MIN	420	530	640	740	850	960

Timing not authorized for defining the MAPt.