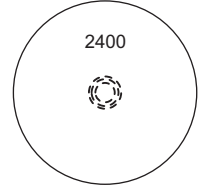


Bremen Radar
124.170 123.220 125.020

Schwerin Tower
128.900

Transition Altitude 5000'
Airport Elevation 166'
Magnetic Variation 2° E

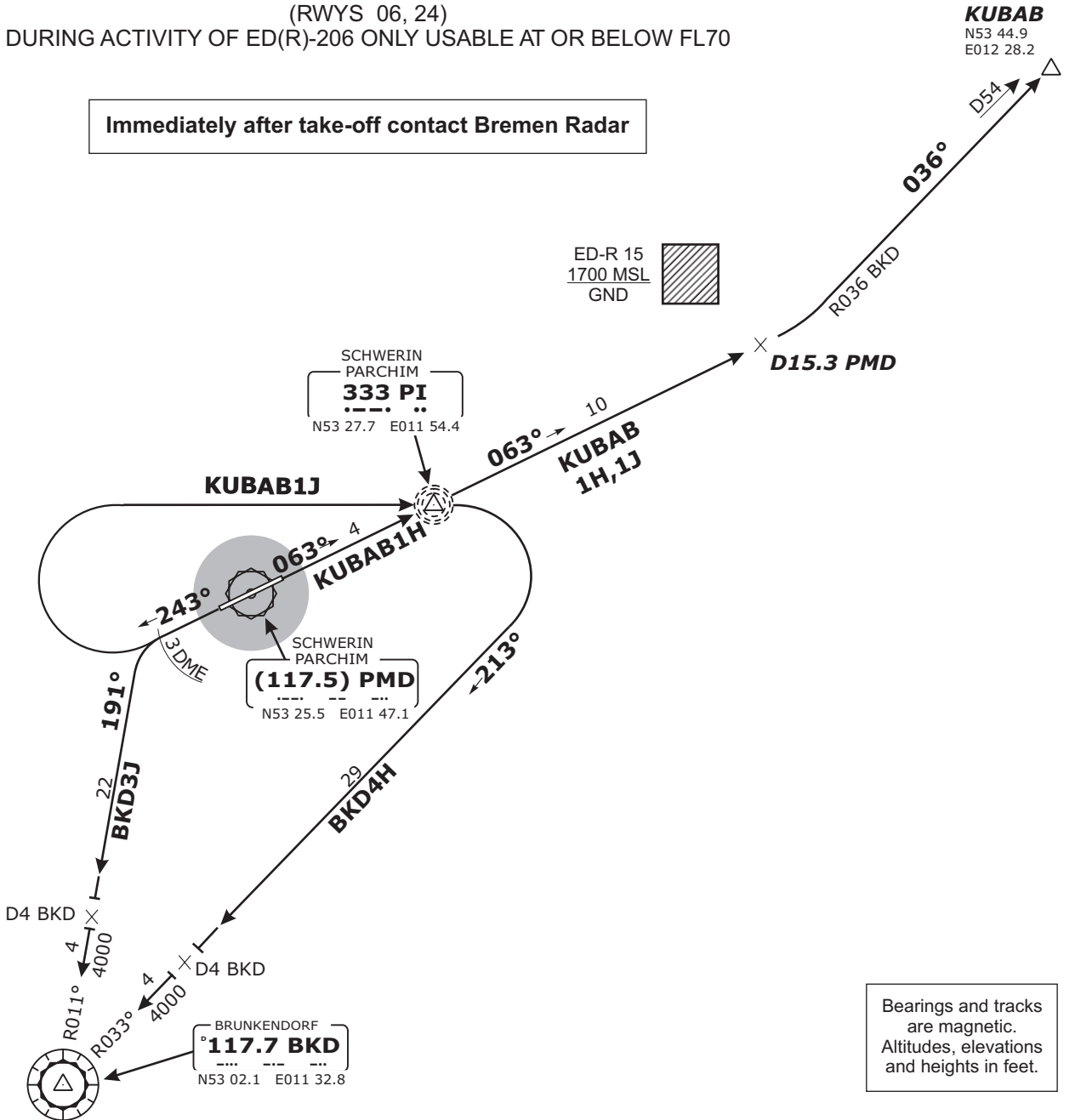
MSA 25 NM from
PI NDB



**BRUNKENDORF FOUR HOTEL (BKD 4H)
BRUNKENDORF THREE JULIETT (BKD 3J)
KUBAB ONE HOTEL (KUBAB 1H)
KUBAB ONE JULIETT (KUBAB 1J)
DEPARTURES**

(RWYS 06, 24)
DURING ACTIVITY OF ED(R)-206 ONLY USABLE AT OR BELOW FL70

Immediately after take-off contact Bremen Radar



Bearings and tracks
are magnetic.
Altitudes, elevations
and heights in feet.

Valid for flight simulation use only - do not use for real life navigation

| SID | RWY | ROUTING | CLIMB INSTRUCTION |
|----------|-----|--|--------------------------|
| BKD 4H | 06 | On track 063° to PI NDB, turn RIGHT, R-033 inbound to BKD VORDME | Climb to 5000' |
| BKD 3J | 24 | On 243° track to PMD 3 DME, turn LEFT, intercept BKD R-011 inbound to BKD VORDME | |
| KUBAB 1H | 06 | On track 063° via PI NDB to 15.3 DME PMD, turn LEFT, intercept BKD R-036 to KUBAB | |
| KUBAB 1J | 24 | On 243° track to PMD 3 DME, turn RIGHT to PI NDB, turn LEFT, track 063° to 15.3 DME PMD, turn LEFT, intercept BKD R-036 to KUBAB | |