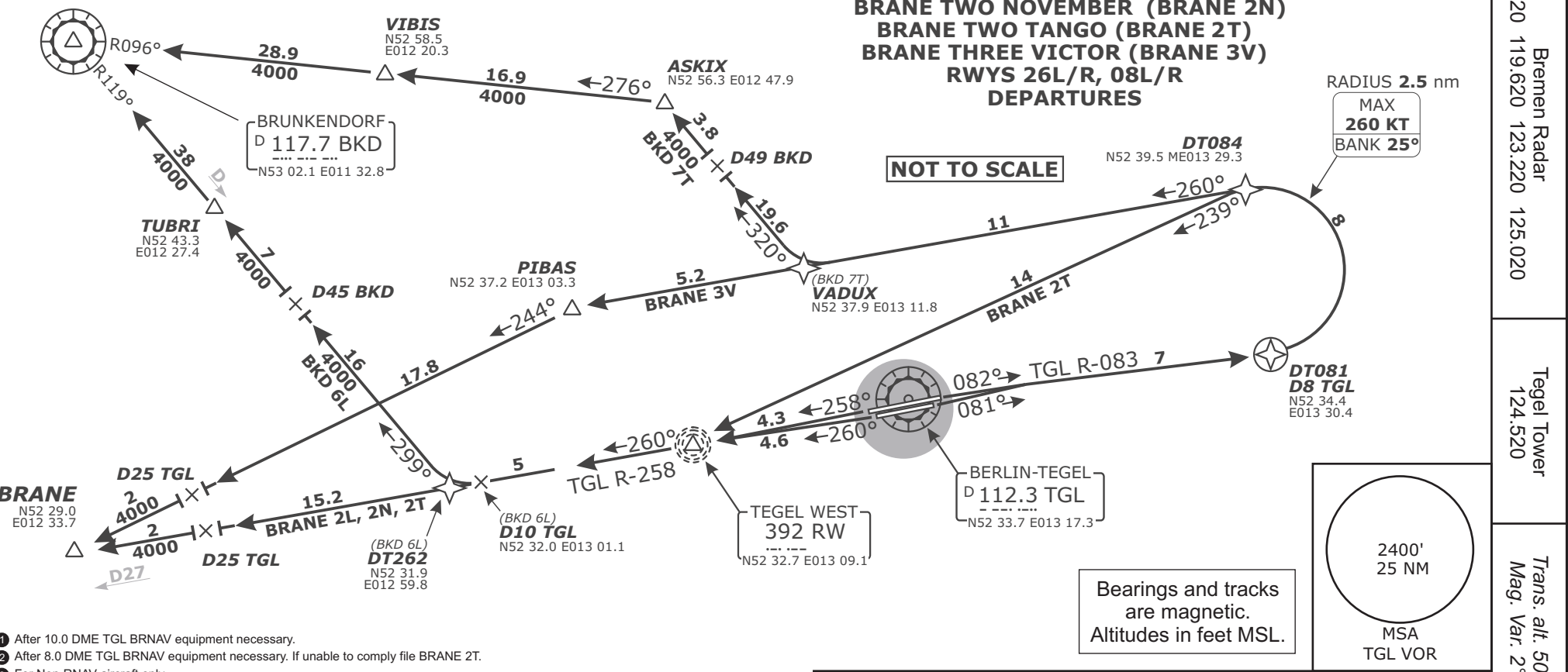


Remain on Tower frequency until passing altitude 2000', then contact Bremen Radar.



- 1 After 10.0 DME TGL BRNAV equipment necessary.
- 2 After 8.0 DME TGL BRNAV equipment necessary. If unable to comply file BRANE 2T.
- 3 For Non-RNAV aircraft only.
- 4 After 8.0 DME TGL BRNAV equipment necessary. If unable to comply file BRANE 2L.
- 5 Access only to Y200 or Q201.

**BKD 6L, BRANE 2L, BRANE 2N: Initial climb clearance 4000'**  
**BKD 7T, BRANE 2T, BRANE 3V: Initial climb clearance 5000'**

SID	RWY	ROUTING	GPS/FMS RNAV
<b>BKD 6L</b> 1	<b>26L/R</b>	Climb on runway track to <b>600'</b> , then to RW, 260° bearing to D10 TGL, turn RIGHT, intercept BKD R-119 inbound via TUBRI to BKD.	<b>(600'+)</b> - RW - DT262 - TUBRI - BKD.
<b>BKD 7T</b> 2	<b>08L/R</b>	Climb on runway track to <b>600'</b> , intercept TGL R-083 to D8 TGL, turn LEFT MAX 260KT, 260° track to VADUX, turn RIGHT, 320° track to ASKIX, turn LEFT, 276° track via VIBIS to BKD.	<b>(600'+)</b> - DT081 - DT084 (K260-) - VADUX - ASKIX - VIBIS - BKD.
<b>BRANE 2L</b> 3 5 <b>BRANE 2N</b> 4 5	<b>26L/R</b>	Climb on runway track to <b>600'</b> , then to RW, 260° bearing, intercept TGL R-258 to BRANE.	<b>(600'+)</b> - RW - BRANE.
<b>BRANE 2T</b> 3 5	<b>08L/R</b>	Climb on runway track to <b>600'</b> , intercept TGL R-083 to D8 TGL, turn LEFT MAX 260KT, intercept 239° bearing to RW, turn RIGHT, intercept TGL R-258 to BRANE.	
<b>BRANE 3V</b> 2 5		Climb on runway track to <b>600'</b> , intercept TGL R-083 to D8 TGL, turn LEFT MAX 260KT, 260° track to PIBAS, turn LEFT, 244° track to BRANE.	<b>(600'+)</b> - DT081 - DT084 (K260-) - PIBAS - BRANE.

**Valid for flight simulation use only - do not use for real life navigation**

Bremen Radar  
120.620 119.620 123.220 125.020

Tegel Tower  
124.520

Trans. alt. 5000'  
Mag. Var. 2° E

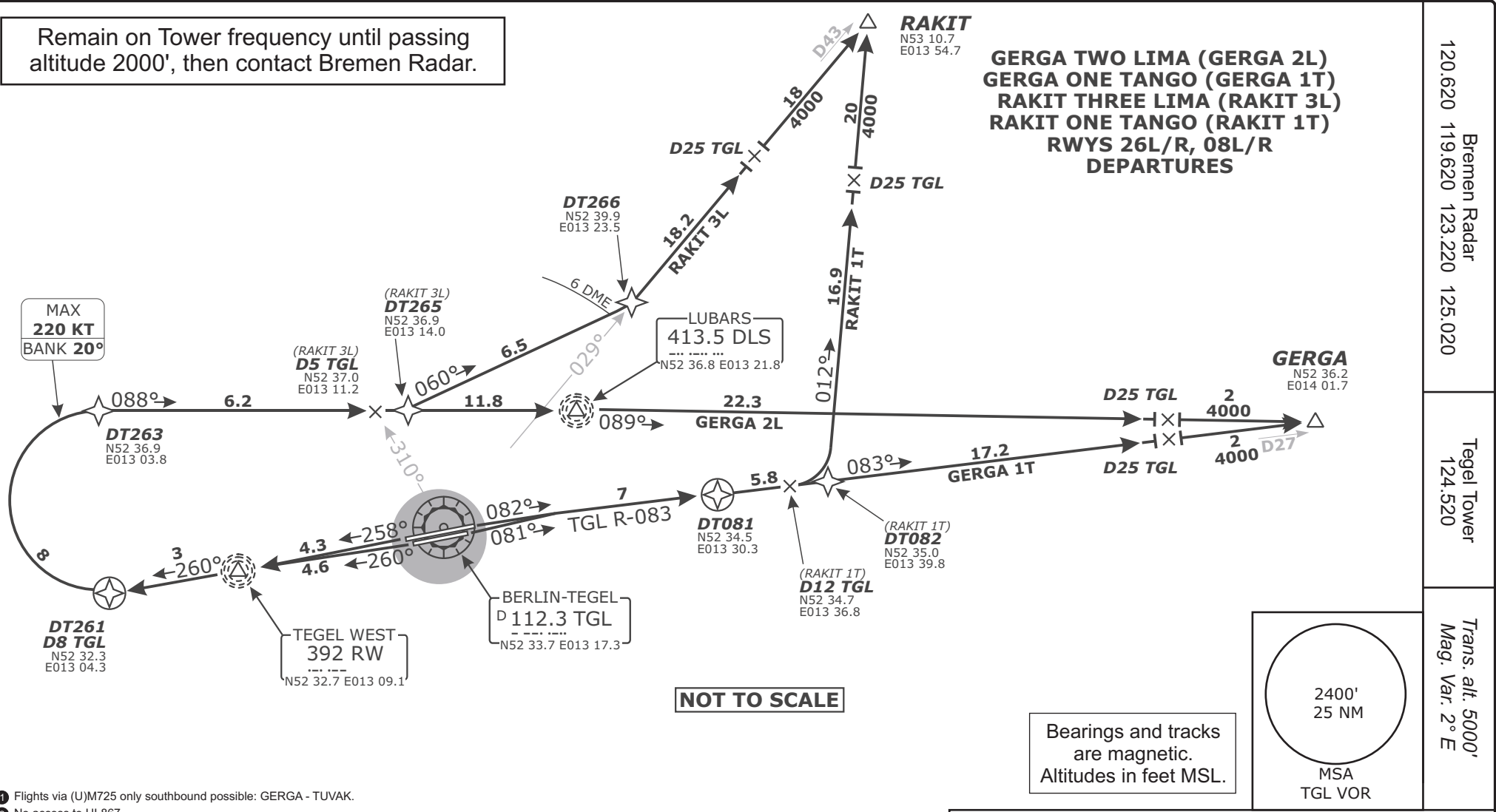
RADIUS 2.5 nm  
MAX 260 KT  
BANK 25°

2400'  
25 NM  
MSA  
TGL VOR

Bearings and tracks are magnetic.  
Altitudes in feet MSL.

NOT TO SCALE

Remain on Tower frequency until passing altitude 2000', then contact Bremen Radar.



**GERGA TWO LIMA (GERGA 2L)  
GERGA ONE TANGO (GERGA 1T)  
RAKIT THREE LIMA (RAKIT 3L)  
RAKIT ONE TANGO (RAKIT 1T)  
RWYS 26L/R, 08L/R  
DEPARTURES**

Bremen Radar 120.620 119.620 123.220 125.020	Tegel Tower 124.520	Trans. alt. 5000' Mag. Var. 2° E
---	------------------------	-------------------------------------

- 1 Flights via (U)M725 only southbound possible: GERGA - TUVAK.
- 2 No access to UL867.
- 3 After 25.0 DME TGL BRNAV equipment necessary.
- 4 After 12.0 DME TGL BRNAV equipment necessary.

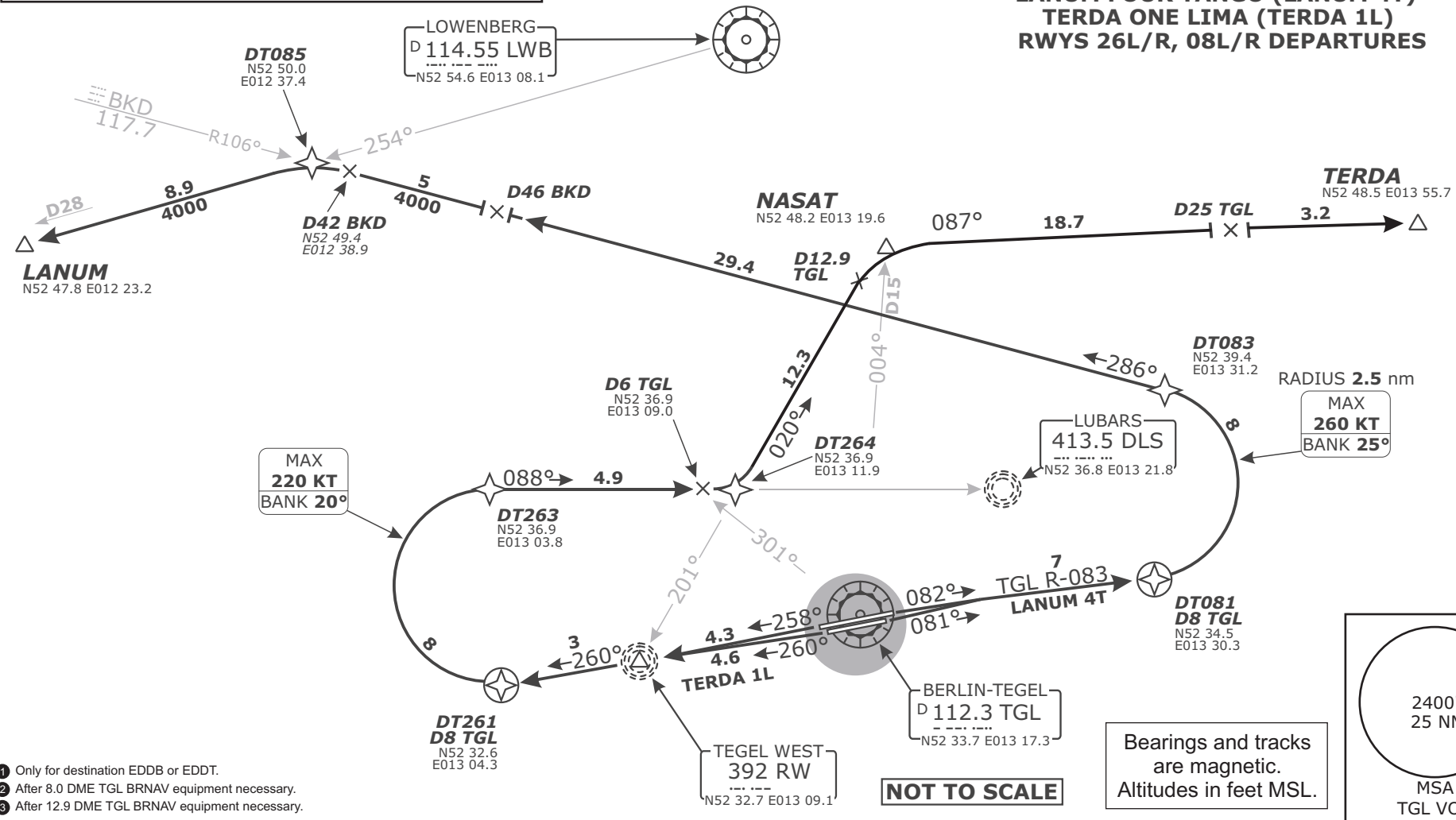
**GERGA 2L, RAKIT 3L: Initial climb clearance 4000'**  
**GERGA 1T, RAKIT 1T: Initial climb clearance 5000'**

SID	RWY	ROUTING	GPS/FMS RNAV
<b>GERGA 2L</b> 1 2	<b>26L/R</b>	Climb on runway track to <b>600'</b> , then to RW, 260° bearing to D8 TGL, turn RIGHT MAX 220KT, intercept 088° bearing to DLS, 089° bearing to GERGA.	<b>(600'+)</b> - RW - DT261 - DT263 (K220-) - DLS - GERGA.
<b>GERGA 1T</b> 1 2	<b>08L/R</b>	Climb on runway track to <b>600'</b> , intercept TGL R-083 to GERGA.	<b>(600'+)</b> - DT081 - GERGA.
<b>RAKIT 3L</b> 3	<b>26L/R</b>	Climb on runway track to <b>600'</b> , then to RW, 260° bearing to D8 TGL, turn RIGHT MAX 220KT, intercept 088° bearing towards DLS, at D5 TGL (crossing TGL R-310) turn LEFT, 060° track, intercept TGL R-029 to RAKIT.	<b>(600'+)</b> - RW - DT261 - DT263 (K220-) - DT265 - DT266 - RAKIT.
<b>RAKIT 1T</b> 4	<b>08L/R</b>	Climb on runway track to <b>600'</b> , intercept TGL R-083 to D12 TGL, turn LEFT, 012° track to RAKIT.	<b>(600'+)</b> - DT081 - DT082 - RAKIT.

**Valid for flight simulation use only - do not use for real life navigation**

Remain on Tower frequency until passing altitude 2000', then contact Bremen Radar.

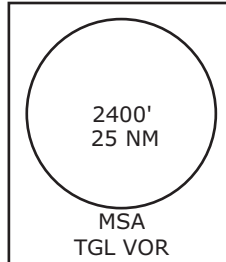
**LANUM FOUR TANGO (LANUM 4T)  
TERDA ONE LIMA (TERDA 1L)  
RWYS 26L/R, 08L/R DEPARTURES**



- ① Only for destination EDDB or EDDT.
- ② After 8.0 DME TGL BRNAV equipment necessary.
- ③ After 12.9 DME TGL BRNAV equipment necessary.

Bearings and tracks are magnetic.  
Altitudes in feet MSL.

**NOT TO SCALE**



Initial climb clearance **4000'**

SID	RWY	ROUTING	GPS/FMS RNAV
<b>LANUM 4T</b> ① ②	<b>08L/R</b>	Climb on runway track to <b>600'</b> , intercept TGL R-083 to D8 TGL, turn LEFT MAX 260KT, intercept BKD R-106 inbound to D42 BKD, turn LEFT, intercept LWB R-254 to LANUM.	<b>(600'+)</b> - DT081 - DT083 (K260-) - DT085 - LANUM.
<b>TERDA 1L</b> ① ③	<b>26L/R</b>	Climb on runway track to <b>600'</b> , then to RW, 260° bearing to D8 TGL, turn RIGHT MAX 220KT, intercept 088° bearing towards DLS, at D6 TGL (crossing TGL R-301) turn LEFT, intercept 020° bearing from RW to 12.9 DME TGL; RT, on track 087° to TERDA.	<b>(600'+)</b> - RW - DT261 - DT263 (K220-) - DT264 - NASAT - TERDA.

**Valid for flight simulation use only - do not use for real life navigation**

Bremen Radar 120.620 119.620 123.220 125.020	Tegel Tower 124.520	Trans. alt. 5000' Mag. Var. 2° E
---	------------------------	-------------------------------------