

Berlin, GERMANY

Berlin-Tegel (TXL)

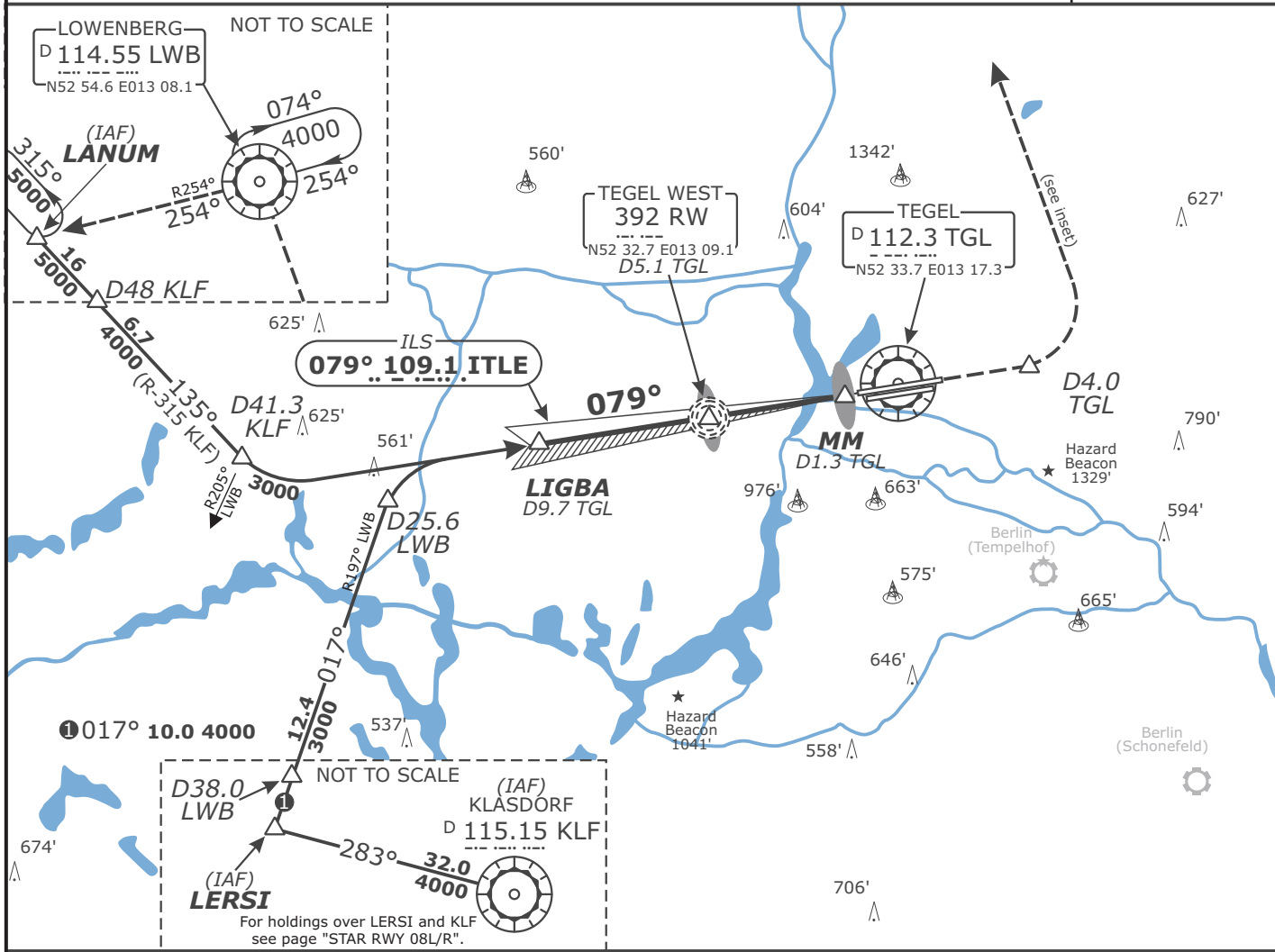


EDDT

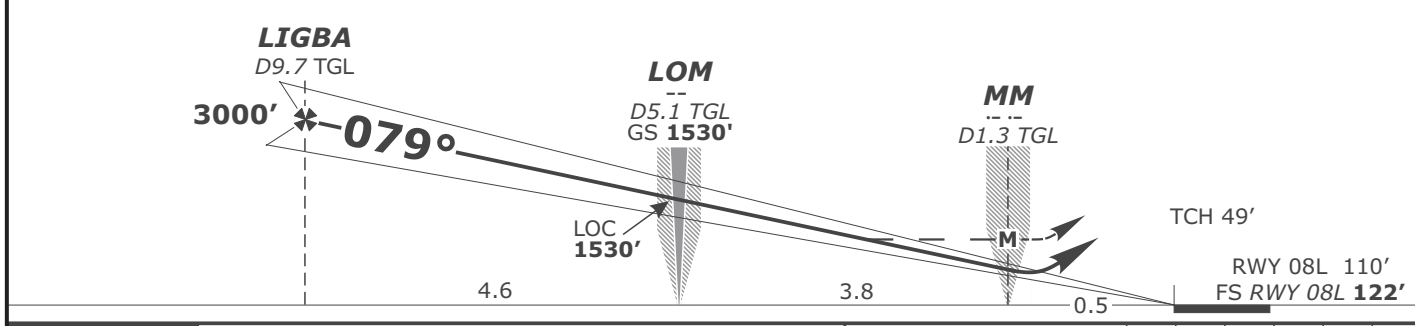
Effective 2009-03-12

ILS CAT II & III or LOC RWY 08L

| | | | | | |
|---|----------------------------------|---|---|---|-------------------------|
| Bremen Radar 119.620 123.220 125.020 | | Bremen Radar <i>Arrival South</i> 126.420 | Berlin Director 121.120 | Tegel Tower 124.520 | Tegel Ground 121.750 |
| LOC ITLLE 109.1 | Final Apch Crs 079° | GS LOM 1530' (1408') | CAT I : DH 322' (200') CAT II : RA 102' DH 222' (100') | Apt Elev 122' FS: RWY 122' RWY 110' | MSA TGL VOR |
| MISSED APCH: Climb on rwy track to MAX 3000'. At D4.0 East of TGL VOR climb to 5000' and turn LEFT via LWB VOR to LANUM. | | | | | |
| Alt Set: hPa (IN on req) LOC: DME REQUIRED. | | Rwy Elev: 4 hPa | Trans level: By ATC | | Trans alt: 5000' |



| LOC (GS out) | TGL DME | 9.0 | 8.0 | 7.0 | 6.0 | 5.0 | 4.0 | 3.0 |
|--------------|----------|-------|-------|-------|-------|-------|-------|------|
| | ALTITUDE | 2770' | 2460' | 2140' | 1820' | 1500' | 1180' | 860' |



| Flight Simulator-OPS | | | STRAIGHT-IN LANDING RWY 08L | | | | | | | |
|----------------------|---------------------------------|---|---|--|-----|-----|-----|-----|-----|-----|
| A | ILS DA(H) 322' (200') | CAT II ILS RA 102' DA(H) 222' (100') | LOC (GS out) MDA(H) 602' (480') | Gnd speed-Kts | 70 | 90 | 100 | 120 | 140 | 160 |
| | | | | ILS GS 3.00° or LOC Descent Gradient 5.2% | 377 | 484 | 538 | 646 | 753 | 861 |
| B | RVR 550m | RVR 300m | RVR 1000m | MAP at MM/D1.3 TGL | | | | | | |
| C | | | | RVR 1200m | | | | | | |
| D | | | | RVR 1600m | | | | | | |

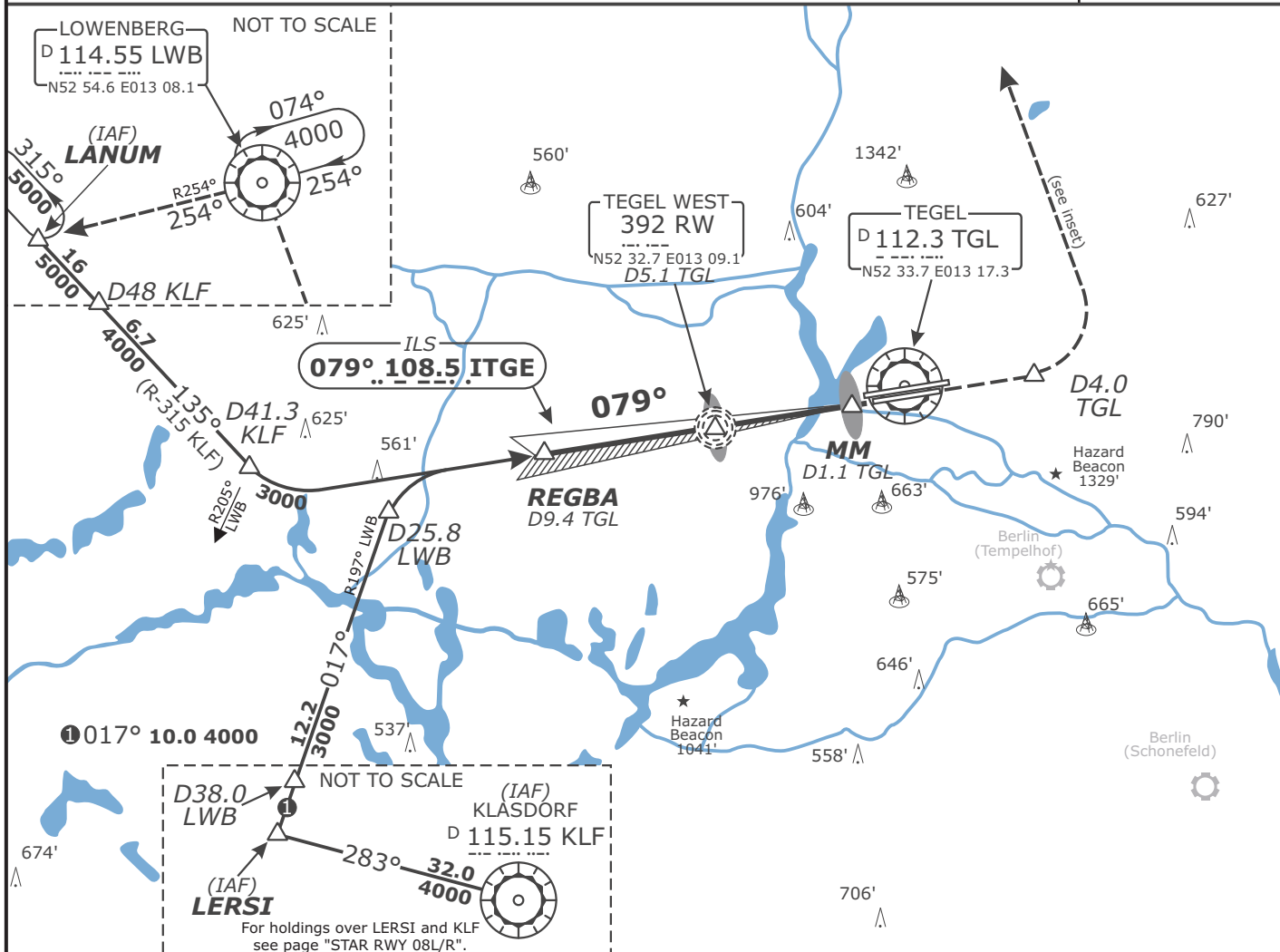
Valid for flight simulation use only - do not use for real life navigation

Revision: 2010-06-14. Changes: comm. frequencies.

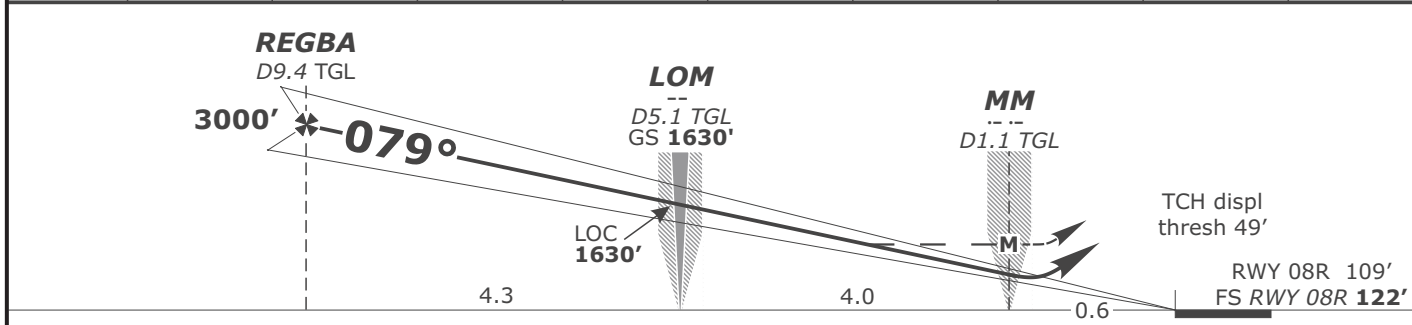
Berlin, GERMANY

Berlin-Tegel (TXL)

| | | | | | |
|---|----------------------------------|---|---------------------------------------|---|-------------------------|
| Bremen Radar 119.620 123.220 125.020 | | Bremen Radar <i>Arrival South</i> 126.420 | Berlin Director 121.120 | Tegel Tower 124.520 | Tegel Ground 121.750 |
| LOC ITGE 108.5 | Final Apch Crs 079° | GS LOM 1630' (1508') | ILS DA(H) <i>Refer to Minimums</i> | Apt Elev 122' FS: RWY 122' RWY 109' | |
| MISSED APCH: Climb on rwy track to MAX 3000'. At D4.0 East of TGL VOR climb to 5000' and turn LEFT via LWB VOR to LANUM. | | | | | |
| Alt Set: hPa (IN on req) LOC: DME REQUIRED. | | Rwy Elev: 4 hPa | Trans level: By ATC | | Trans alt: 5000' |



| LOC (GS out) | TGL DME | 9.0 | 8.0 | 7.0 | 6.0 | 5.0 | 4.0 | 3.0 | 2.0 |
|--------------|----------|-------|-------|-------|-------|-------|-------|------|------|
| | ALTITUDE | 2870' | 2550' | 2230' | 1920' | 1600' | 1280' | 960' | 640' |



| Flight Simulator-OPS | | STRAIGHT-IN LANDING RWY 08R | | | | | |
|----------------------|---|---|--|--|--|--|--|
| DA(H) | A: 367' (245') C: 387' (265') | LOC (GS out) | | | | | |
| | B: 377' (255') D: 397' (275') | MDA(H) 573' (451') | | | | | |
| A | RVR 600m | Gnd speed-Kts | | | | | |
| B | RVR 650m | 70 90 100 120 140 160 | | | | | |
| C | | ILS GS 3.00° or LOC Descent Gradient 5.2% | | | | | |
| D | | 377 484 538 646 753 861 | | | | | |
| | | MAP at MM/D1.1 TGL | | | | | |

Revision: 2010-06-14. Changes: comm. frequencies.

Valid for flight simulation use only - do not use for real life navigation

Berlin, GERMANY

Berlin-Tegel (TXL)

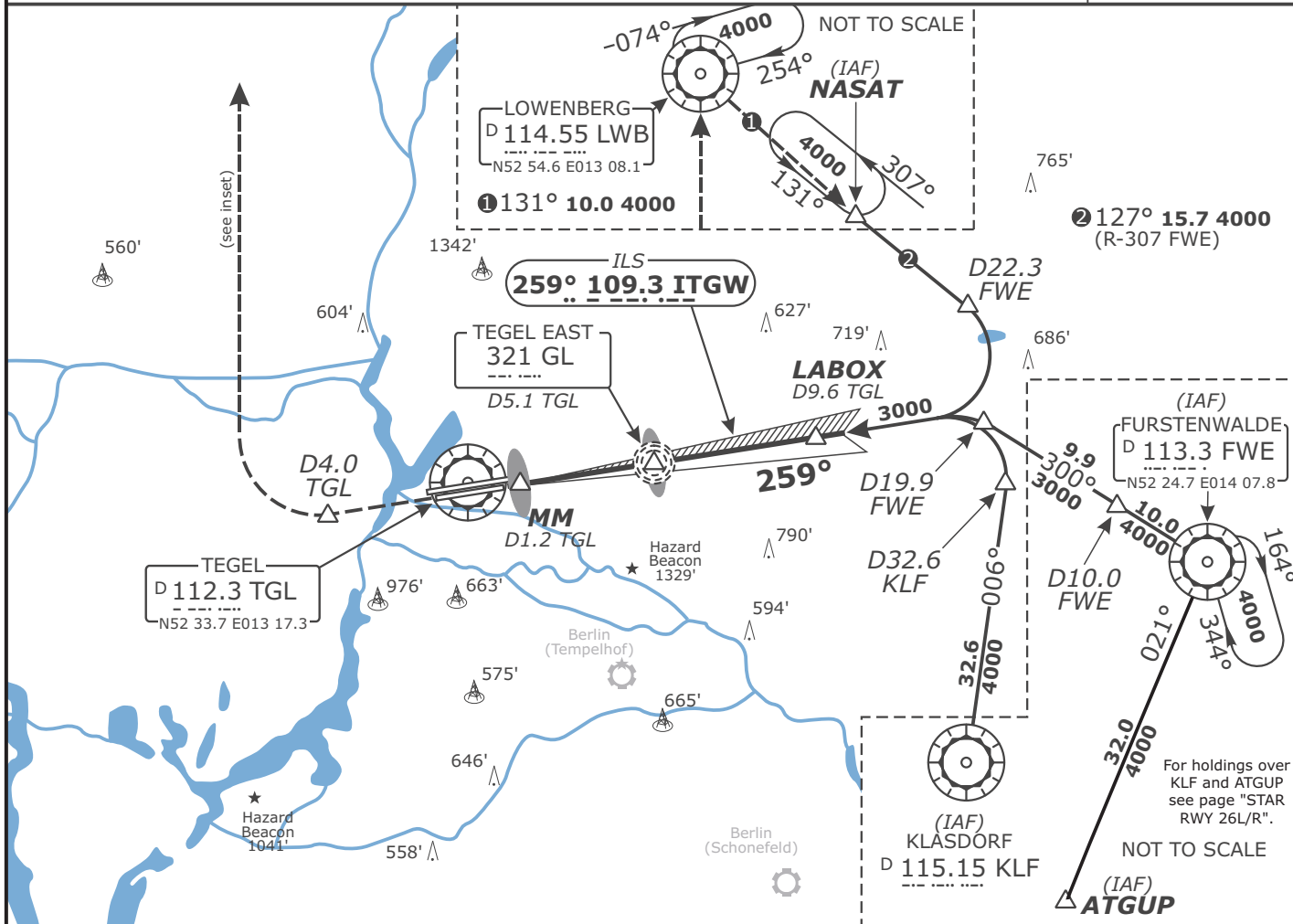


Effective 2009-03-12

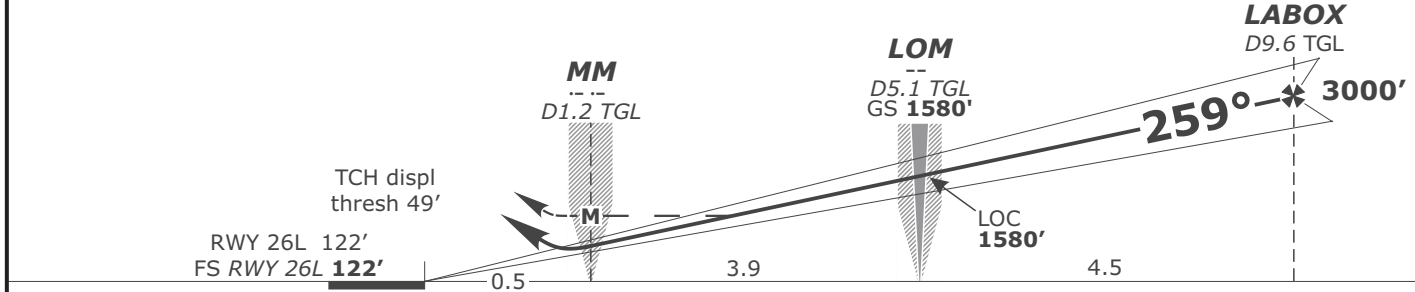
ILS CAT I & II or LOC RWY 26L

EDDT

| | | | | | |
|--|----------------------------------|---|--------------------------------|---|---|
| Bremen Radar 119.620 123.220 125.020 | | Bremen Radar <i>Arrival South</i> 126.420 | Berlin Director 121.120 | Tegel Tower 124.520 | Tegel Ground 121.750 |
| LOC ITGW 109.3 | Final Apch Crs 259° | GS LOM 1580' (1458') | ILS DA(H) Refer to Minimums | Apt Elev 122' FS: RWY 122' RWY 122' | <p>2400' 25 NM</p> <p>MSA TGL VOR</p> |
| <p>MISSED APCH: Climb on rwy track to MAX 3000'. At D4.0 West of TGL VOR climb to 4000' and turn RIGHT via LWB VOR to NASAT.</p> <p>Alt Set: hPa (IN on req) Rwy Elev: 4 hPa Trans level: By ATC Trans alt: 5000'</p> <p>LOC: DME REQUIRED.</p> | | | | | |



| LOC (GS out) | TGL DME | 2.0 | 3.0 | 4.0 | 5.0 | 6.0 | 7.0 | 8.0 | 9.0 |
|--------------|----------|------|------|-------|-------|-------|-------|-------|-------|
| | ALTITUDE | 590' | 910' | 1230' | 1550' | 1860' | 2180' | 2500' | 2820' |



| Flight Simulator-OPS | | STRAIGHT-IN LANDING RWY 26L | | | | Gnd speed-Kts | | | | | |
|-----------------------------|----------|-----------------------------|--|--|--|--|-----|-----|-----|-----|-----|
| ILS | | CAT II ILS | | | | 70 | 90 | 100 | 120 | 140 | 160 |
| DA(H) A: 363' (241') | | A | | | | ILS GS 3.00° or LOC Descent Gradient 5.2% | | | | | |
| B: 373' (251') | | B | | | | 377 | 484 | 538 | 646 | 753 | 861 |
| C: 383' (261') | | C | | | | MAP at MM/D1.2 TGL | | | | | |
| D: 393' (271') | | D | | | | | | | | | |
| | | LOC (GS out) | | | | | | | | | |
| | | MDA(H) 540' (418') | | | | | | | | | |
| A | RVR 600m | | | | | RVR 900m | | | | | |
| B | | RVR 300m | | | | RVR 1000m | | | | | |
| C | RVR 650m | RVR 400m | | | | RVR 1400m | | | | | |
| D | | RVR 450m | | | | | | | | | |

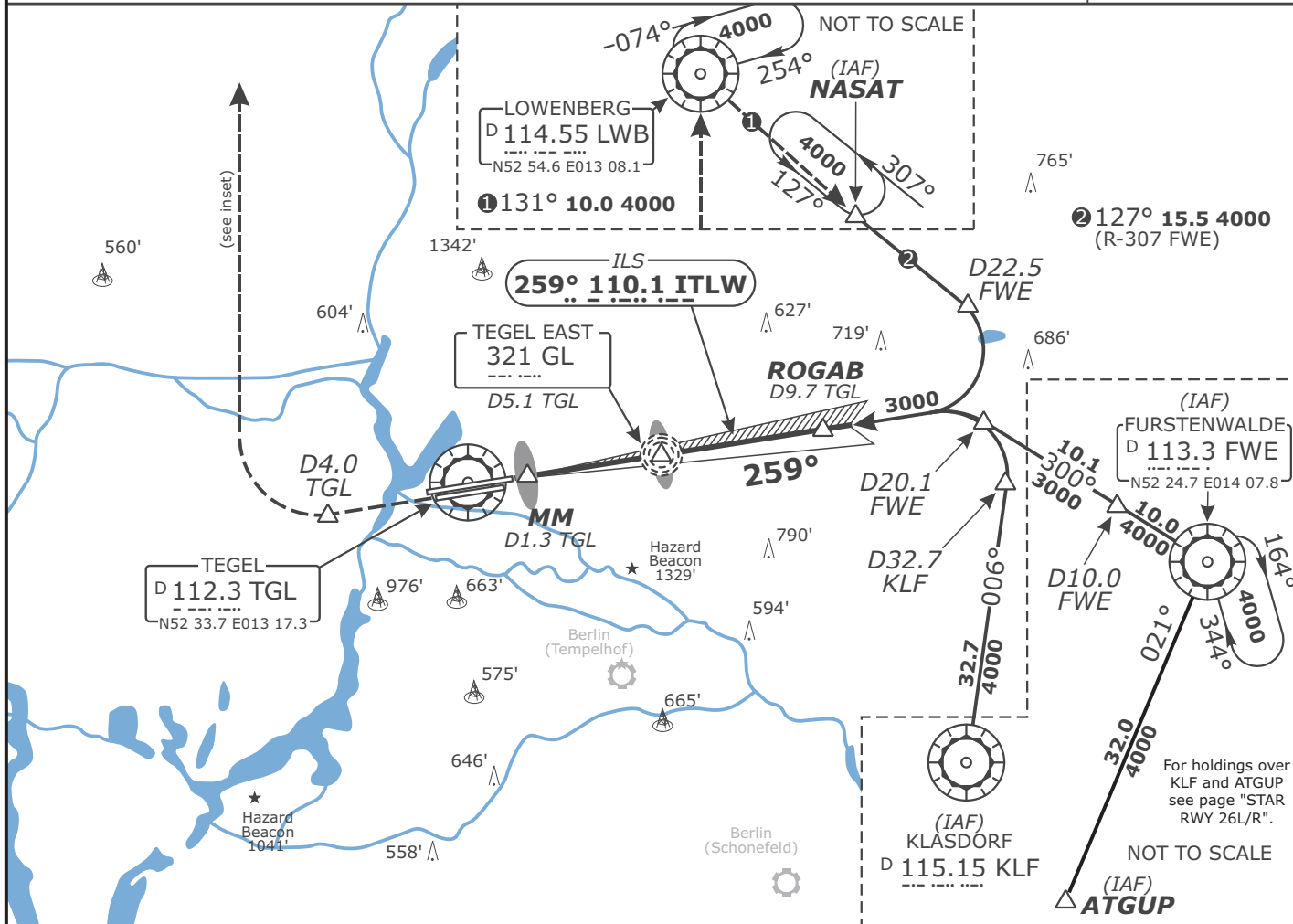
Revision: 2010-06-14. Changes: comm. frequencies.

Valid for flight simulation use only - do not use for real life navigation

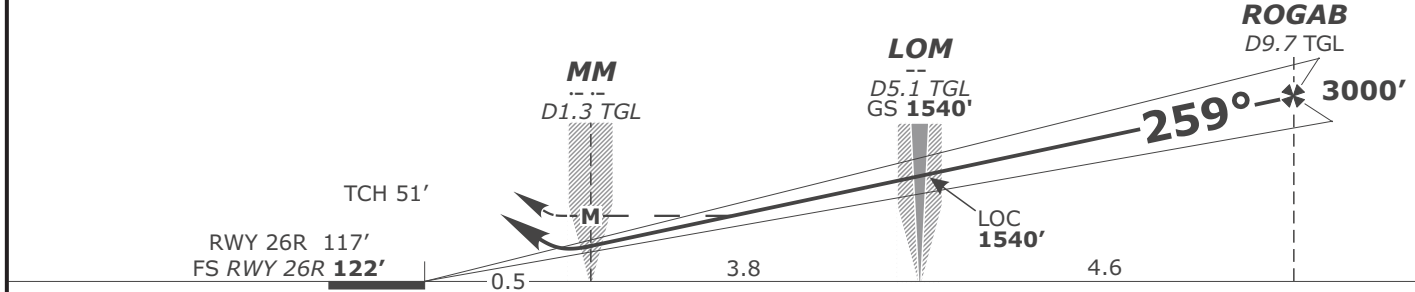
| | | | | | |
|---|----------------------------------|---|--------------------------------|---|-------------------------|
| Bremen Radar 119.620 123.220 125.020 | | Bremen Radar <i>Arrival South</i> 126.420 | Berlin Director 121.120 | Tegel Tower 124.520 | Tegel Ground 121.750 |
| LOC ITLW 110.1 | Final Apch Crs 259° | GS LOM 1540' (1418') | ILS DA(H) Refer to Minimums | Apt Elev 122' FS: RWY 122' RWY 117' | <p>MSA TGL VOR</p> |

MISSED APCH: Climb on rwy track to MAX 3000'. At D4.0 West of TGL VOR climb to 4000' and turn RIGHT via LWB VOR to NASAT.

Alt Set: hPa (IN on req) Rwy Elev: 4 hPa Trans level: By ATC Trans alt: 5000'
 LOC: **DME REQUIRD.**



| LOC (GS out) | TGL DME | 2.0 | 3.0 | 4.0 | 5.0 | 6.0 | 7.0 | 8.0 | 9.0 |
|--------------|----------|------|------|-------|-------|-------|-------|-------|-------|
| | ALTITUDE | 560' | 870' | 1190' | 1510' | 1830' | 2150' | 2470' | 2780' |



| | | | | | | | |
|--|--|---|-----|--------------------|-----|-----|-----|
| Flight Simulator-OPS | | Gnd speed-Kts | | | | | |
| STRAIGHT-IN LANDING RWY 26R | | 70 | 90 | 100 | 120 | 140 | 160 |
| ILS | | ILS GS 3.00° or LOC Descent Gradient 5.2% | | | | | |
| CAT II ILS | | 377 | 484 | 538 | 646 | 753 | 861 |
| DA(H) A: 340' (218') C: 360' (238') B: 350' (228') D: 370' (248') | | MAP at MM/D1.3 TGL | | | | | |
| ABCD RA 95' DA(H) 222' (100') | | LOC (GS out) | | MDA(H) 525' (403') | | | |
| RVR 600m | | RVR 900m | | | | | |
| RVR 300m | | RVR 1000m | | | | | |
| | | RVR 1400m | | | | | |

Valid for flight simulation use only - do not use for real life navigation

Revision: 2010-06-14. Changes: comm. frequencies.