

LUKOP 08, GOBAX 08, SOMKO 08, MITNI 08 RWYS 08L/R RNAV APPROACH TRANSITIONS

GPS- OR FMS-EQUIPPED AIRCRAFT

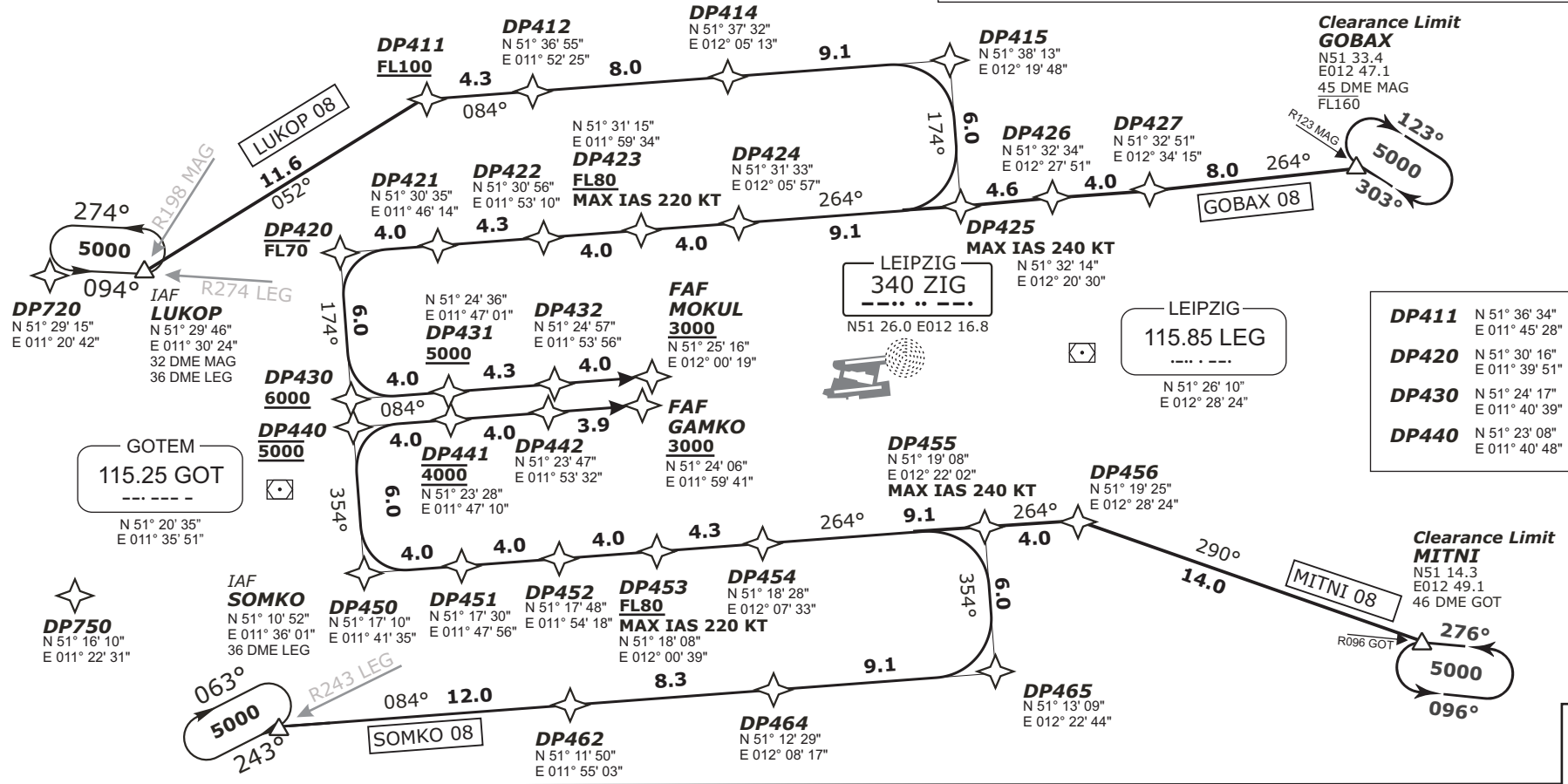
MAGDEBURG
110.45 MAG

N 51° 59' 42"
E 011° 47' 40"

Clearance phraseology for GPS/FMS routing

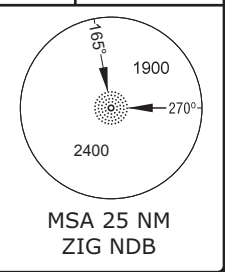
- "Cleared xxx transition"**
Permission to fly the lateral part of the GPS/FMS routing including assigned speeds. Altitudes will be assigned separately.
- "Cleared xxx transition and profile"**
Permission to fly the GPS/FMS routing including assigned speeds and altitudes.
- "Cleared direct waypoint xxx"**
Permission to fly from the present position direct to the given waypoint including the continuation of the flight on the lateral part of the GPS/FMS routing adjoining that waypoint, including assigned speeds. Altitudes will be assigned separately.

- Use of transition procedures only when cleared by ATC.
- On downwind expect vectors to final.
- Speed restrictions are always mandatory, unless cancelled by ATC.



MÜNCHEN RADAR	126.170	133.570
LEIPZIG DIRECTOR	131.020	129.100
	128.470	
TOWER (N)	125.950	
TOWER (S)	121.100	
GROUND	121.670	
DELIVERY	121.800	
ATIS	123.950	

Mag. Variation	2° E
Elevation	470'
Transition altitude	5000'
Transition level	5000'
by ATC	



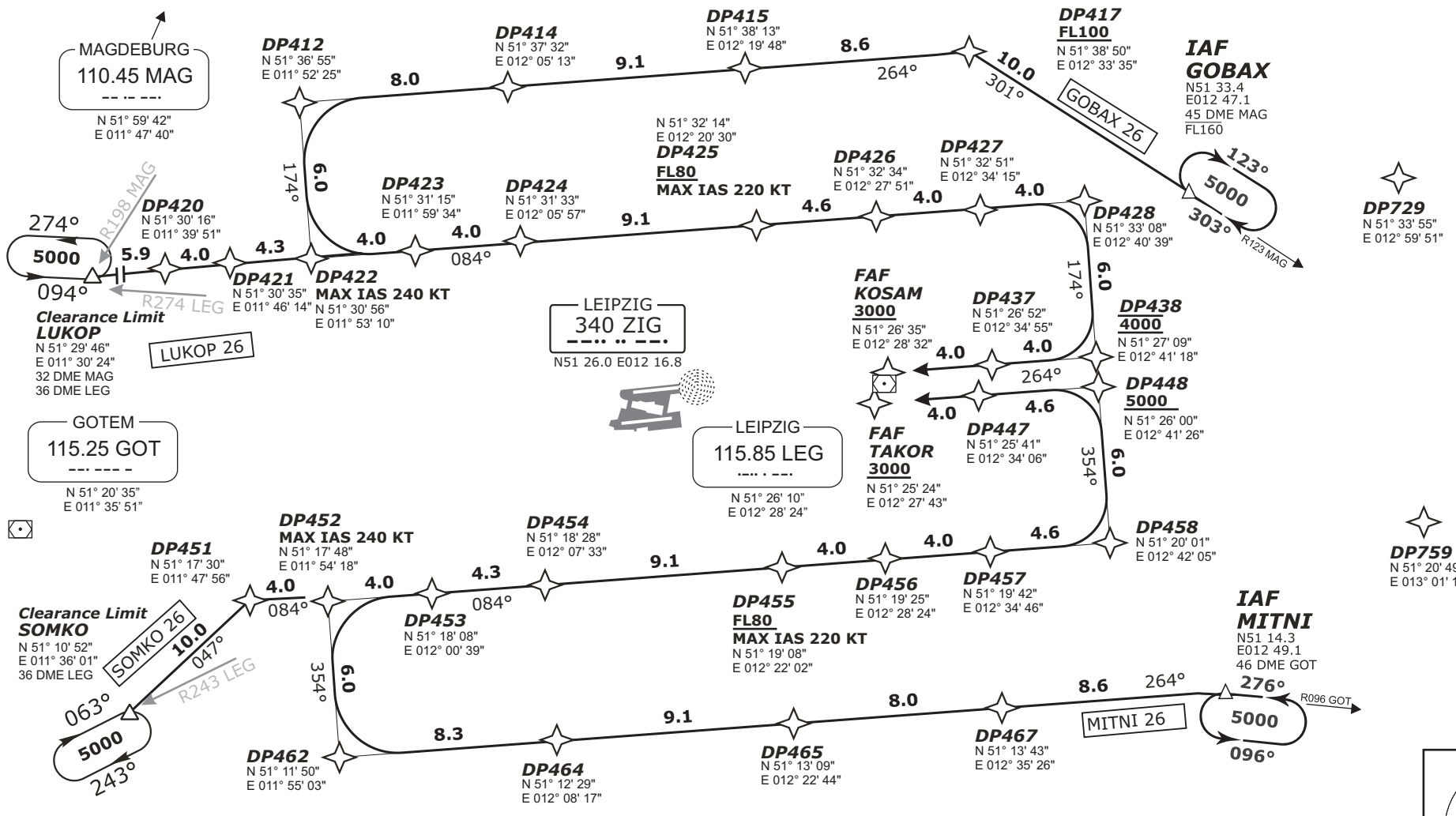
TRANSITION	ROUTING
GOBAX 08	GOBAX (F160-) - DP425 (K240-) - DP423 (F080+; K220-) - DP420 (F070-) - DP430 (6000'+) - DP431 (5000'+) - MOKU (3000'+)
LUKOP 08	LUKOP - DP411 (F100+) - DP415 - DP425 (K240-) - DP423 (F080+; K220-) - DP420 (F070-) - DP430 (6000'+) - DP431 (5000'+) - MOKUL (3000'+)
MITNI 08	MITNI - DP456 - DP455 (K240-) - DP453 (F080+; K220-) - DP450 - DP440 (5000') - DP441 (4000') - GAMKO (3000'+)
SOMKO 08	SOMKO - DP465 - DP455 (K240-) - DP453 (F080+; K220-) - DP450 - DP440 (5000') - DP441 (4000') - GAMKO (3000'+)

Valid for flight simulation use only - do not use for real life navigation

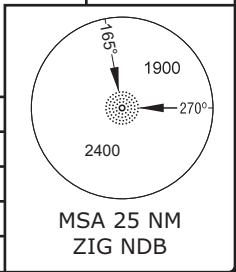
**LUKOP 26, GOBAX 26,
SOMKO 26, MITNI 26
RWYS 26L/R
RNAV APPROACH TRANSITIONS
GPS- OR FMS-EQUIPPED AIRCRAFT**

1. Use of transition procedures only when cleared by ATC.
2. On downwind expect vectors to final.
3. Speed restrictions are always mandatory, unless cancelled by ATC.

Clearance phraseology for
GPS/FMS routing
see page
"Transition RWY 08L/R"



TRANSITION	ROUTING
GOBAX 26	GOBAX (F160-) - DP417 (F100+) - DP412 - DP422 (K240-) - DP425 (F080+; K220-) - DP428 (F070-) - DP438 (4000') - KOSAM (3000'+)
LUKOP 26	LUKOP - DP422 (K240-) - DP425 (F080+; K220-) - DP428 (F070-) - DP438 (4000') - KOSAM (3000'+)
MITNI 26	MITNI - DP462 - DP452 (K240-) - DP455 (F080+; K220-) - DP458 - DP448 (5000'+) - TAKOR (3000'+)
SOMKO 26	SOMKO - DP451 - DP452 (K240-) - DP455 (F080+; K220-) - DP458 - DP448 (5000'+) - TAKOR (3000'+)



MÜNCHEN RADAR	126.170 133.570
LEIPZIG DIRECTOR	131.020 129.100 128.470
TOWER (N)	125.950
GROUND DELIVERY	121.100 121.670 121.800 123.950
ATIS	

Mag. Variation	2° E
Elevation	470'
Transition altitude	5000'
Transition level	by ATC

Leipzig, GERMANY
Leipzig/Halle (LEJ)



EDDP
Transition RWY 26L/R
Effective 2009-03-12