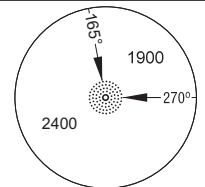


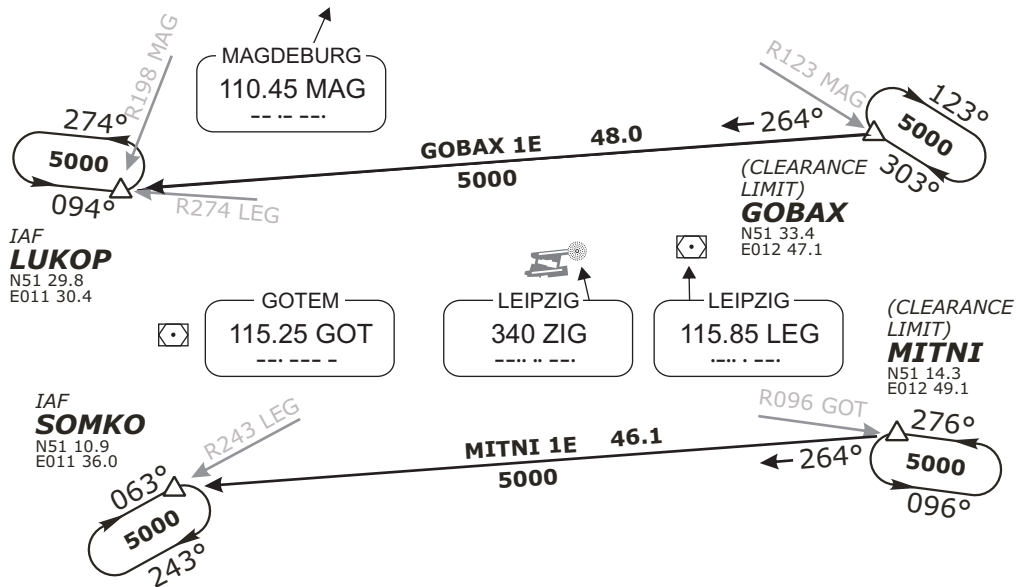
MÜNCHEN RADAR	126.170	133.570	TOWER (N)	125.950	Mag. Variation	2° E
	131.020	129.100		TOWER (S)		121.100
LEIPZIG DIRECTOR	128.470		GROUND	121.670	Transition altitude	5000'
			DELIVERY	121.800	Transition level	by ATC
			ATIS	123.950		



MSA 25 NM
ZIG NDB

RWY 08L/R ARRIVALS

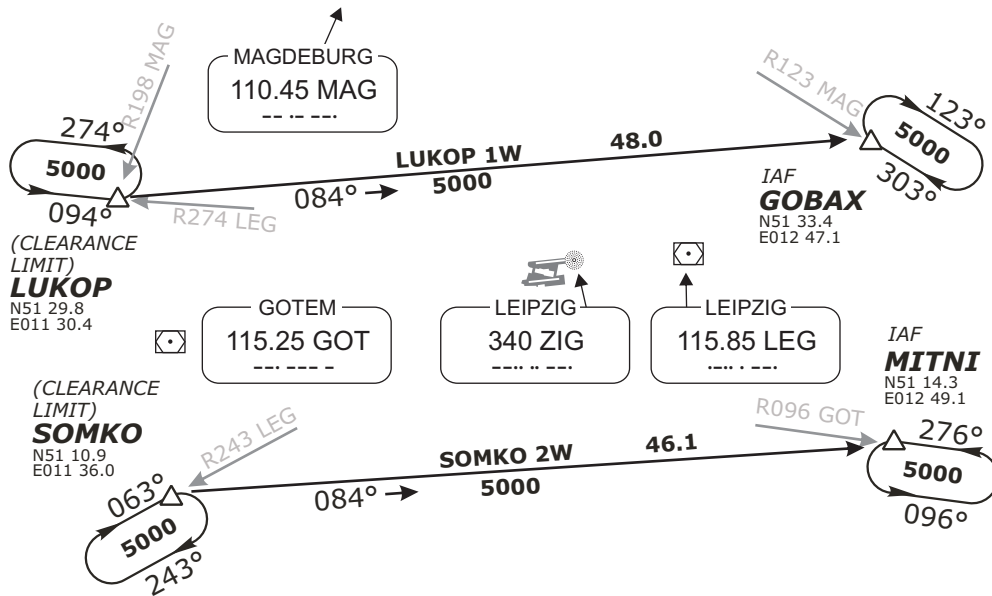
**GOBAX ONE ECHO (GOBAX 1E)
MITNI ONE ECHO (MITNI 1E)**



1. BRNAV equipment necessary.
2. BRNAV and NON-RNAV aircraft expect radar vectors to final.
3. GPS/FMS-aircraft expect GPS/FMS RNAV transistions.

RWY 26L/R ARRIVALS

**LUKOP ONE WHISKEY (LUKOP 1W)
SOMKO TWO WHISKEY (SOMKO 2W)**



1. BRNAV equipment necessary.
2. BRNAV and NON-RNAV aircraft expect radar vectors to final.
3. GPS/FMS-aircraft expect GPS/FMS RNAV transistions.

Revision: 2010-05-27. Changes: comm. frequencies.

Valid for flight simulation use only - do not use for real life navigation