

Valid for flight simulation use only - do not use for real life navigation

APP CHART NO.4
Revision 14 MAY 08
Effective 29 SEP 05

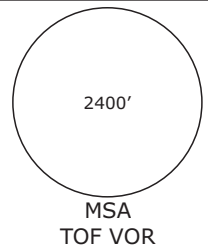
BERLIN, GERMANY VOR Rwy 27R

EDDI/THF TEMPELHOF

Radar: Bremen Radar 123.220
Arrival: Bremen Radar 119.700
Director: Berlin Director 121.120

Tower: 119.57
Ground: 121.95
ATIS: 126.03

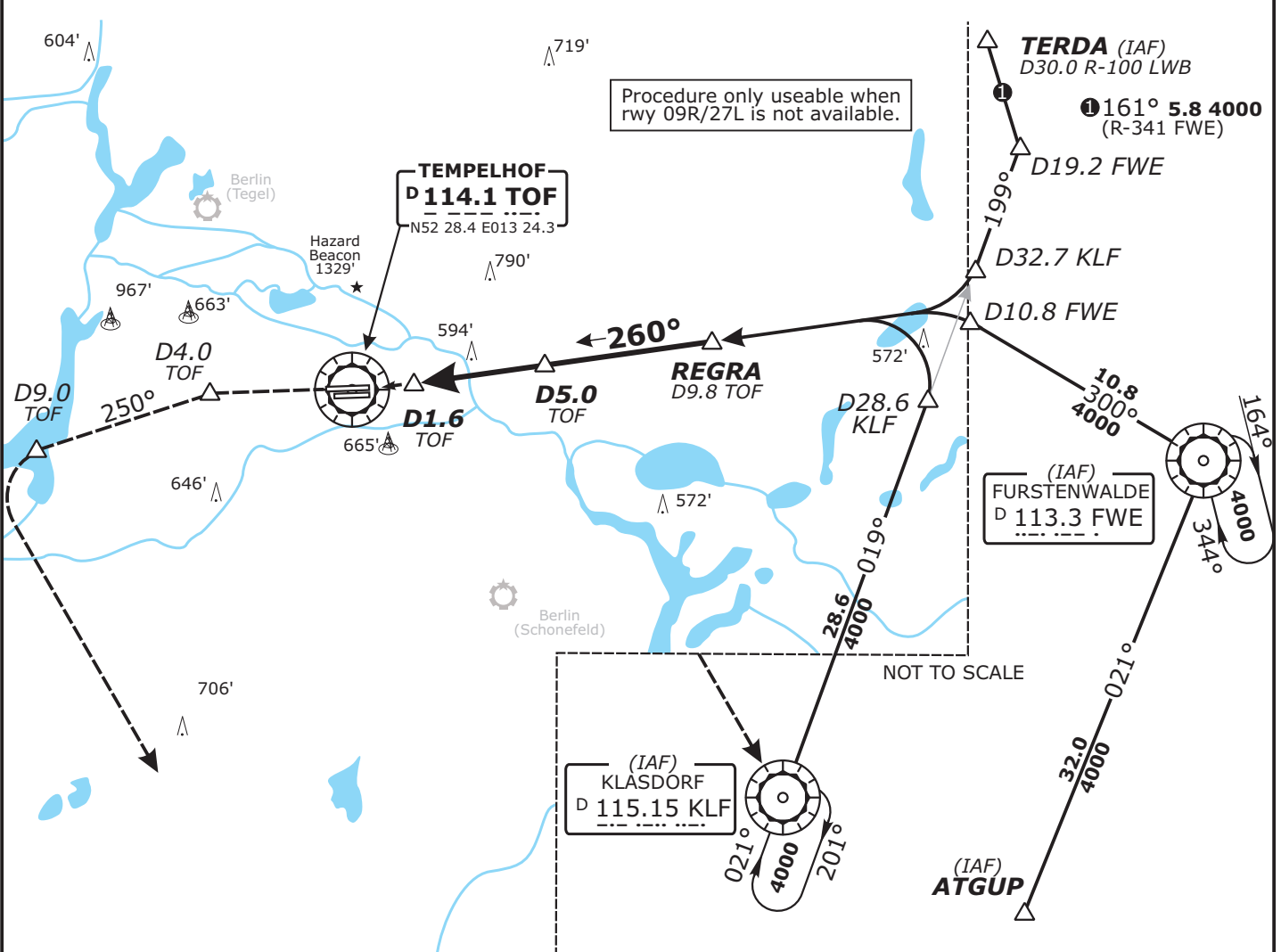
Trans level: by ATC
Trans alt: 5000'
1. Remain on TWR frequency until passing altitude 2000 ft, then contact Bremen Radar



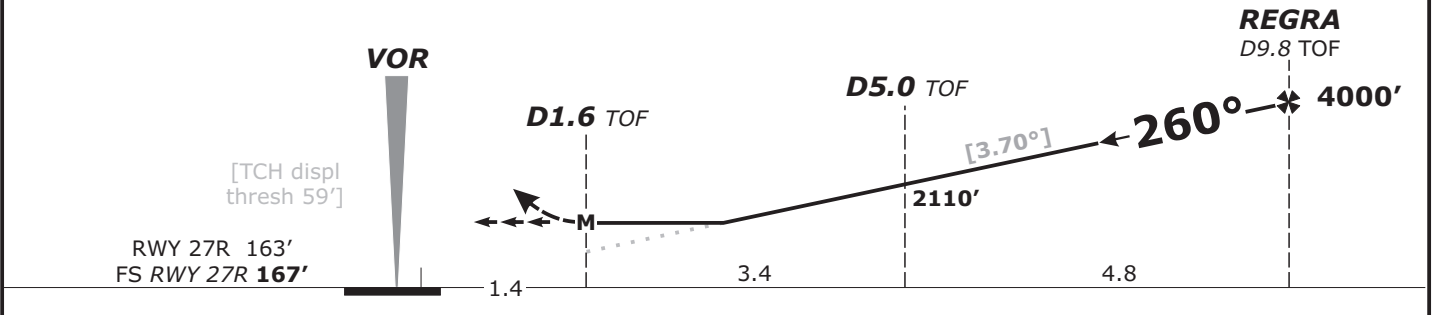
VOR TOF 114.1	Final Apch Crs 260°	Minimum Alt REGRA 4000' (3833')	MDA(H) 840' (673')	Apt Elev 167' FS: RWY 167' RWY 163'
-------------------------	-------------------------------	---	------------------------------	---

MISSED APCH: Climb on rwy track to MAX 3000'. At D4.0 West of TOF continue climb to 4000' and turn LEFT on track 250°. At D9.0 TOF turn LEFT KLF VOR.

- LOC: **DME REQUIRED.**
- Final approach track offset 3° from rwy centerline.



TOF DME	2.0	3.0	4.0	5.0	6.0	7.0	8.0	9.0
ALTITUDE	930'	1320'	1720'	2110'	2500'	2890'	3280'	3680'



Flight Simulator-OPS	STRAIGHT-IN LANDING RWY 27R	Gnd speed-Kts	70	90	100	120	140	160
		Descend Gradient 6.50% or Descent angle [3.70°]	458	589	655	786	917	1048
	MDA(H) 840' (673')	MAP at D1.6 TOF						
A								
B								
C								
D	3000m							

CHANGES: Communications