

Valid for flight simulation use only - do not use for real life navigation

TRANS CHART NO.1  
Revision 14 MAY 08  
Effective 11 MAY 06

**RNAV TRANSITION**

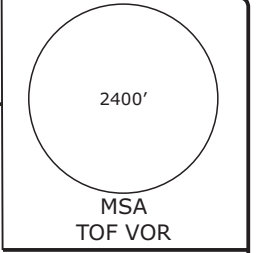
**EDDI/THF TEMPELHOF**

**BERLIN, GERMANY**

Radar: Bremen Radar 123.220  
Arrival: Bremen Radar 119.700  
Director: Berlin Director 121.120

Tower: 119.57  
Ground: 121.95  
ATIS: 126.03

Trans level: by ATC  
Trans alt: 5000'  
1. Remain on TWR frequency until passing altitude 2000 ft, then contact Bremen Radar



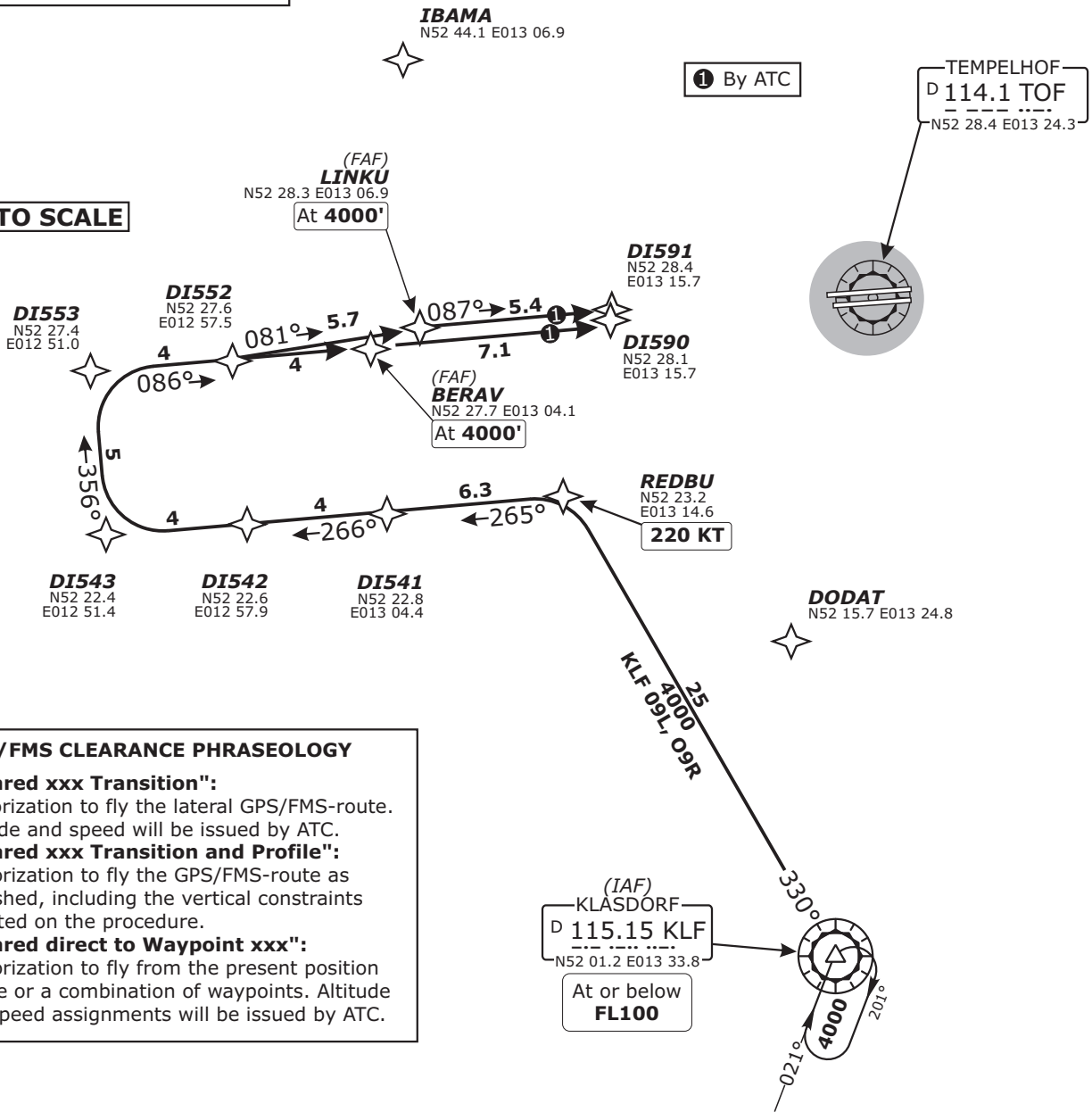
**KLF 09L, KLF 09R  
RWYS 09L/R RNAV APPROACH TRANSITIONS**

GPS- OR FMS-EQUIPPED AIRCRAFT  
USE OF RNAV TRANSITION ONLY WHEN CLEARED BY ATC

1. On downwind expect vectors to final.
2. Speed restrictions on Transition (even without profile) are always mandatory, unless cancelled by ATC.

**SPEED RESTRICTION**  
MAX 250 KT below FL100  
or as by ATC  
Not applicable within airspace C.

**NOT TO SCALE**



- GPS/FMS CLEARANCE PHRASEOLOGY**
1. "Cleared xxx Transition":  
Authorization to fly the lateral GPS/FMS-route. Altitude and speed will be issued by ATC.
  2. "Cleared xxx Transition and Profile":  
Authorization to fly the GPS/FMS-route as published, including the vertical constraints depicted on the procedure.
  3. "Cleared direct to Waypoint xxx":  
Authorization to fly from the present position to one or a combination of waypoints. Altitude and speed assignments will be issued by ATC.

TRANSITION	ROUTING
<b>KLF 09L</b>	KLF (FL100-) - REDBU (K220) - DI541 - DI543 - DI553 - DI552 - LINKU (4000').
<b>KLF 09R</b>	KLF (FL100-) - REDBU (K220) - DI541 - DI543 - DI553 - BERAV (4000').