

Valid for flight simulation use only - do not use for real life navigation

TRANS CHART NO.1
Revision 14 MAY 08
Effective 11 MAY 06

RNAV TRANSITION

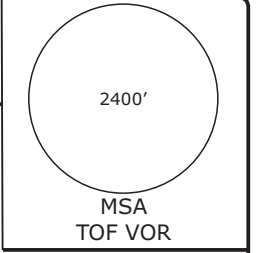
EDDI/THF TEMPELHOF

BERLIN, GERMANY

Radar: Bremen Radar 123.220
Arrival: Bremen Radar 119.700
Director: Berlin Director 121.120

Tower: 119.57
Ground: 121.95
ATIS: 126.03

Trans level: by ATC
Trans alt: 5000'
1. Remain on TWR frequency until passing altitude 2000 ft, then contact Bremen Radar



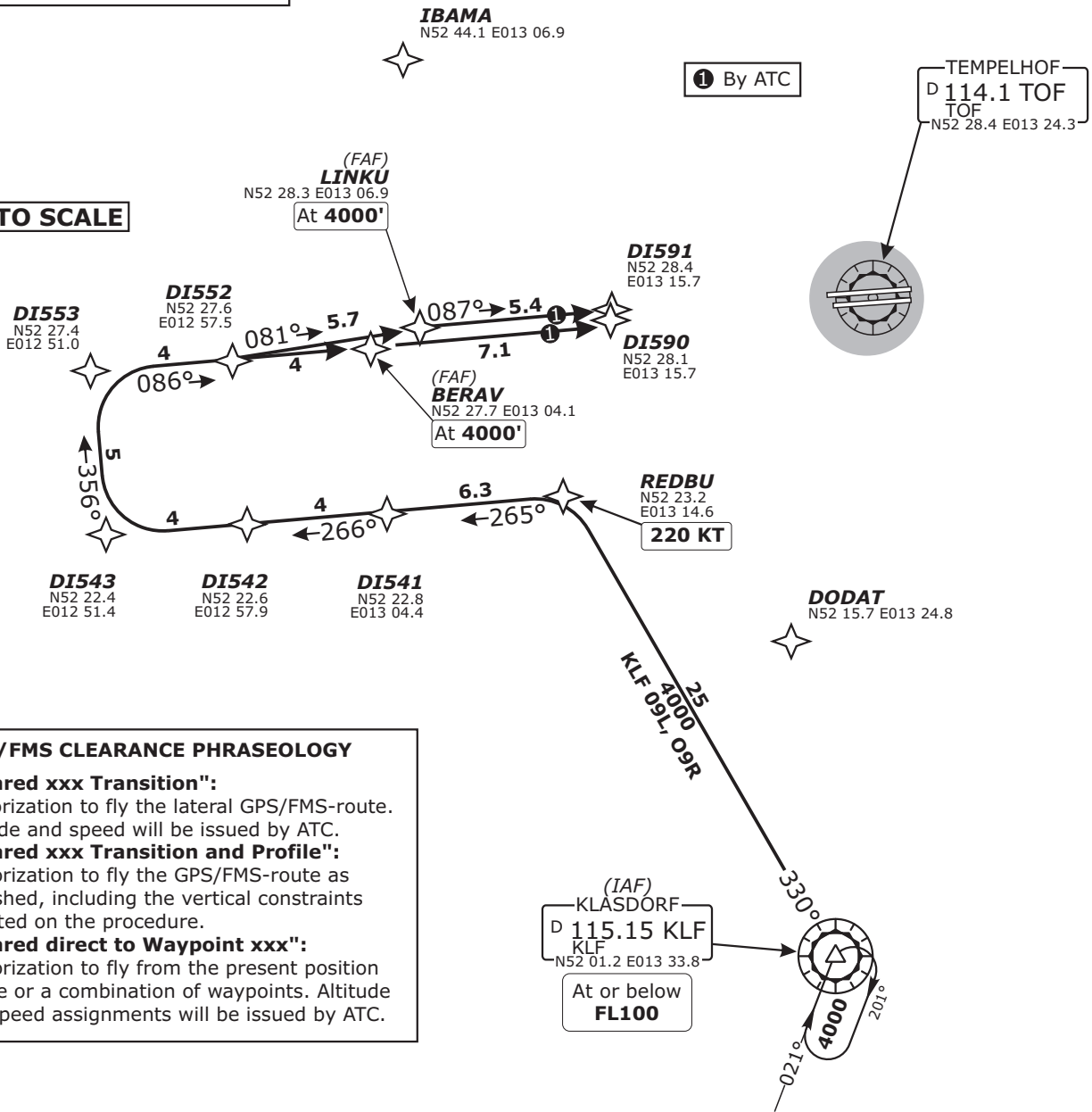
**KLF 09L, KLF 09R
RWYS 09L/R RNAV APPROACH TRANSITIONS**

GPS- OR FMS-EQUIPPED AIRCRAFT
USE OF RNAV TRANSITION ONLY WHEN CLEARED BY ATC

1. On downwind expect vectors to final.
2. Speed restrictions on Transition (even without profile) are always mandatory, unless cancelled by ATC.

SPEED RESTRICTION
MAX 250 KT below FL100
or as by ATC
Not applicable within airspace C.

NOT TO SCALE



- GPS/FMS CLEARANCE PHRASEOLOGY**
1. "Cleared xxx Transition":
Authorization to fly the lateral GPS/FMS-route. Altitude and speed will be issued by ATC.
 2. "Cleared xxx Transition and Profile":
Authorization to fly the GPS/FMS-route as published, including the vertical constraints depicted on the procedure.
 3. "Cleared direct to Waypoint xxx":
Authorization to fly from the present position to one or a combination of waypoints. Altitude and speed assignments will be issued by ATC.

TRANSITION	ROUTING
KLF 09L	KLF (FL100-) - REDBU (K220) - DI541 - DI543 - DI553 - DI552 - LINKU (4000').
KLF 09R	KLF (FL100-) - REDBU (K220) - DI541 - DI543 - DI553 - BERAV (4000').

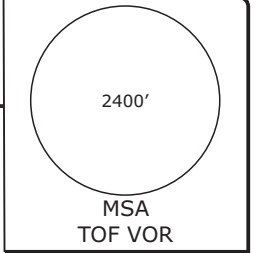
Valid for flight simulation use only - do not use for real life navigation

EDDI/THF TEMPELHOF

Radar: Bremen Radar 123.220
Arrival: Bremen Radar 119.700
Director: Berlin Director 121.120

Tower: 119.57
Ground: 121.95
ATIS: 126.03

Trans level: by ATC
Trans alt: 5000'
1. Remain on TWR frequency until passing altitude 2000 ft, then contact Bremen Radar



**ATGUP 27L, ATGUP 27R
KLF 27L, KLF 27R
OPTIONAL 27L, OPTIONAL 27R
RWYS 27L/R
RNAV APPROACH
TRANSITIONS**

GPS- OR FMS-EQUIPPED AIRCRAFT
USE OF RNAV TRANSITION ONLY
WHEN CLEARED BY ATC

NOT TO SCALE

① By ATC

TEMPELHOF
D 114.1 TOF
TOF
N52 28.4 E013 24.3

GPS/FMS CLEARANCE PHRASEOLOGY

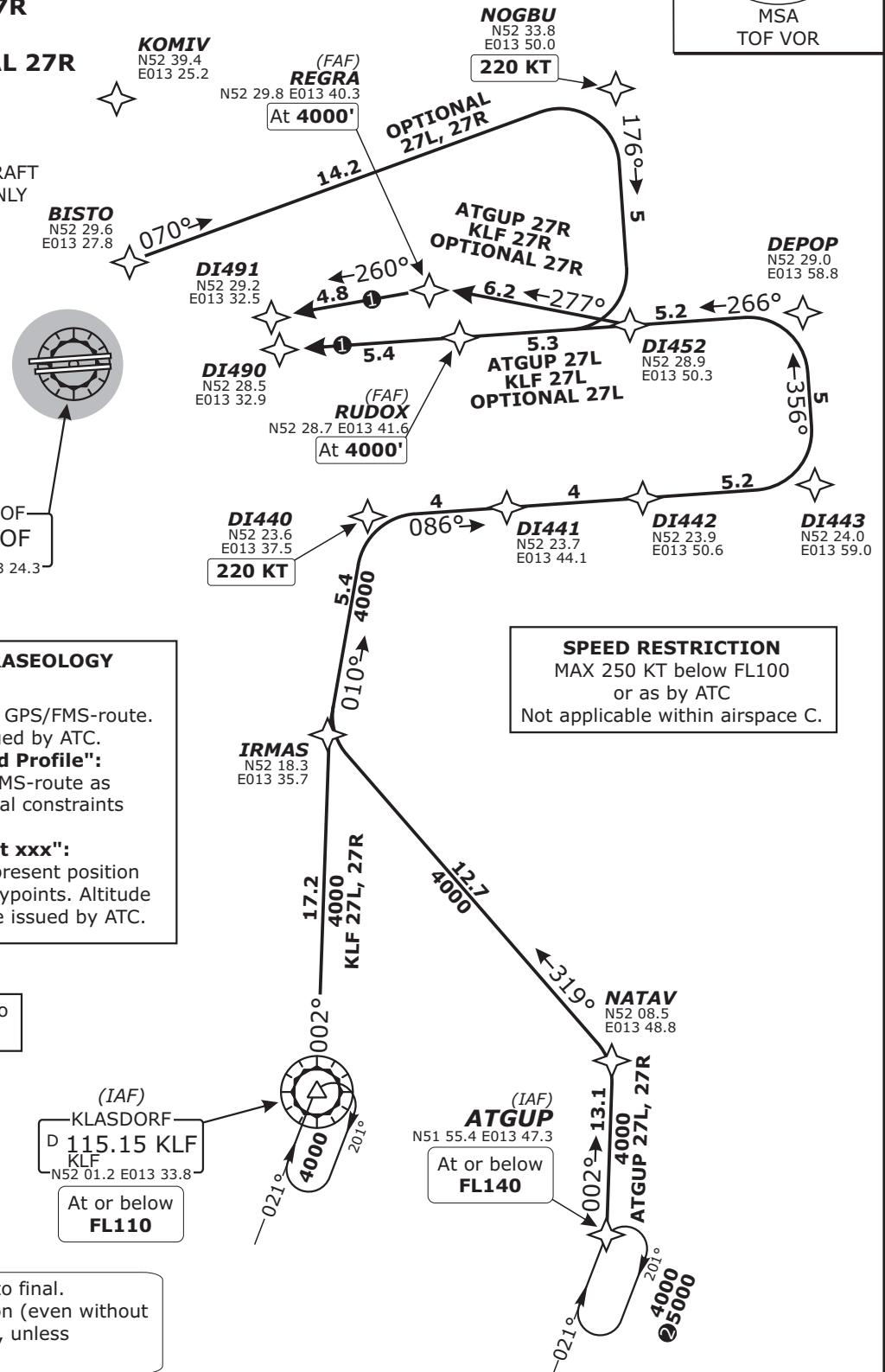
- "Cleared xxx Transition":**
Authorization to fly the lateral GPS/FMS-route. Altitude and speed will be issued by ATC.
- "Cleared xxx Transition and Profile":**
Authorization to fly the GPS/FMS-route as published, including the vertical constraints depicted on the procedure.
- "Cleared direct to Waypoint xxx":**
Authorization to fly from the present position to one or a combination of waypoints. Altitude and speed assignments will be issued by ATC.

② Operational altitude due to Night Low Flying System

(IAF)
KLASDORF
D 115.15 KLF
KLF
N52 01.2 E013 33.8
At or below
FL110

SPEED RESTRICTION
MAX 250 KT below FL100
or as by ATC
Not applicable within airspace C.

- On downwind expect vectors to final.
- Speed restrictions on Transition (even without profile) are always mandatory, unless cancelled by ATC.



TRANSITION	ROUTING
ATGUP 27L	ATGUP (FL140-) - NATAV - IRMAS - DI440 (K220) - DI443 - DEPOP - RUDOX (4000').
ATGUP 27R	ATGUP (FL140-) - NATAV - IRMAS - DI440 (K220) - DI443 - DEPOP - DI452 - REGRA (4000').
KLF 27L	KLF (FL110-) - IRMAS - DI440 (K220) - DI443 - DEPOP - RUDOX (4000').
KLF 27R	KLF (FL110-) - IRMAS - DI440 (K220) - DI443 - DEPOP - DI452 - REGRA (4000').
OPTIONAL 27L	BISTO - NOGBU (K220) - DI452 - RUDOX (4000').
OPTIONAL 27R	BISTO - NOGBU (K220) - DI452 - REGRA (4000').