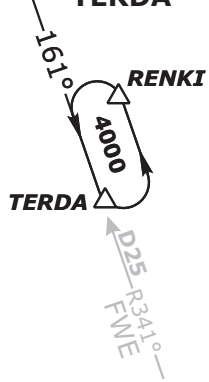
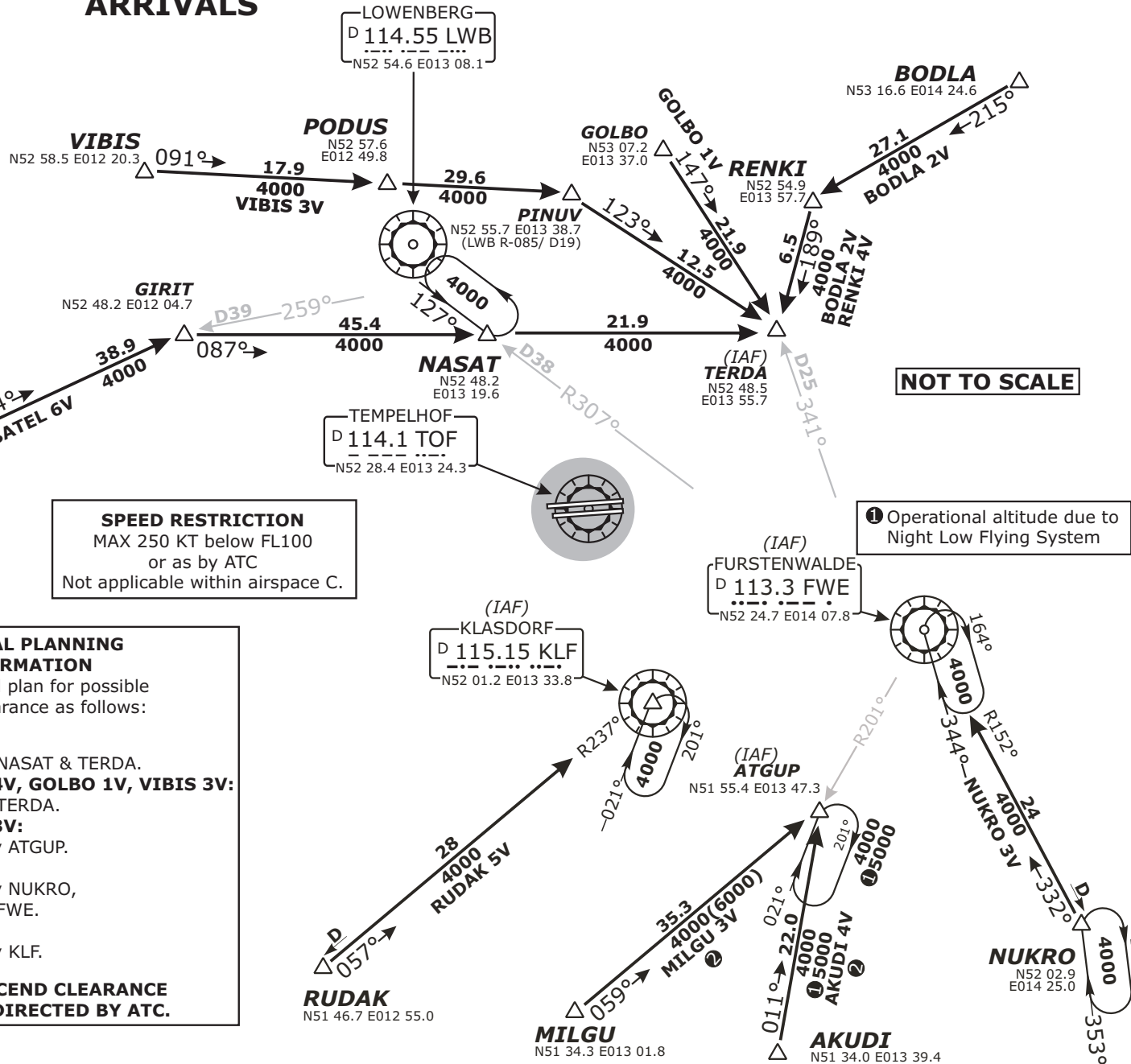


HOLDING OVER TERDA



RWY 27L ARRIVALS



SPEED RESTRICTION
 MAX 250 KT below FL100
 or as by ATC
 Not applicable within airspace C.

VERTICAL PLANNING INFORMATION
 Pilots should plan for possible descent clearance as follows:

BATEL 6V:
 at or below **FL90** by NASAT & TERDA.

BODLA 2V, RENKI 4V, GOLBO 1V, VIBIS 3V:
 at or below **FL90** by TERDA.

AKUDI 4V, MILGU 3V:
 at or below **FL140** by ATGUP.

NUKRO 3V:
 at or below **FL140** by NUKRO,
 at or below **FL70** by FWE.

RUDAK 5V:
 at or below **FL110** by KLF.

ACTUAL DESCEND CLEARANCE WILL BE AS DIRECTED BY ATC.

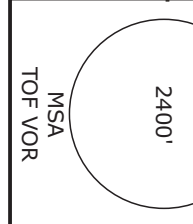
BATEL SIX VICTOR (BATEL 6V)
BODLA TWO VICTOR (BODLA 2V)
GOLBO ONE VICTOR (GOLBO 1V)
RENKI FOUR VICTOR (RENKI 4V)
VIBIS THREE VICTOR (VIBIS 3V)

AKUDI FOUR VICTOR (AKUDI 4V)
NUKRO THREE VICTOR (NUKRO 3V)
RUDAK FIVE VICTOR (RUDAK 5V)
MILGU THREE VICTOR (MILGU 3V)

FROM NORTH
 BRNAV EQUIPMENT NECESSARY

FROM SOUTH
 BRNAV equipment necessary.

Operational altitude due to Night Low Flying System



EDDI/THF TEMPELHOF

STAR CHART NO.2
 Revision 14 MAY 08
 Effective 14 FEB 08

BERLIN, GERMANY

Radar: Bremen Radar 123.220
 Arrivals: Bremen Radar 119.700
 Director: Berlin Director 121.120
 Tower: 119.57
 Ground: 121.95
 ATIS: 126.03

Trans level: by ATC
 Trans alt: 5000'
 1. Remain on TWR frequency until passing altitude 2000 ft, then contact Bremen Radar