

**BKD 8R, GENTI 1Q, KLF 4R:** Initial climb clearance **4000'**  
**BKD 6Q, GENTI 3R:** Initial climb clearance **5000'**

SID	RWY	ROUTING	GPS/FMS RNAV
<b>BKD 6Q</b> ①	<b>27L/R</b>	To DBR, turn LEFT, 250° bearing, intercept TOF R-256 to D24.8 TOF, turn RIGHT, 336° track to TUBRI, turn LEFT, 299° track to BKD.	<b>(600'+)</b> - DBR - DI271 - DI272 - TUBRI - BKD.
<b>BKD 8R</b>	<b>09L/R</b>	To DIP or <b>600'</b> , whichever is later, turn LEFT, 081° bearing, intercept TOF R-083 to D17.3 TOF, turn LEFT, intercept LWB R-121 inbound to LWB, turn LEFT, LWB R-276 via VIBIS to BKD.	<b>(600'+)</b> - DIP - DI092 - DI098 - LWB - VIBIS - BKD.
<b>GENTI 1Q</b>	<b>27L/R</b>	To DBR, turn LEFT, 250° bearing, intercept TOF R-256 to GENTI.	<b>(600'+)</b> - DBR - DI271 - GENTI.
<b>GENTI 3R</b>	<b>09L/R</b>	To DIP or <b>600'</b> , whichever is later, turn LEFT, 081° bearing to D13 TOF, turn RIGHT, intercept FWE R-264 to GENTI.	<b>(600'+)</b> - DIP - DI091 - DI097 (K260-) - GENTI.
<b>KLF 4R</b> ②		To DIP or <b>600'</b> , whichever is later, turn LEFT, 081° bearing to D13 TOF, turn RIGHT, intercept KLF R-021 inbound to KLF.	<b>(600'+)</b> - DIP - DI091 - DI096 (K260-) - KLF.

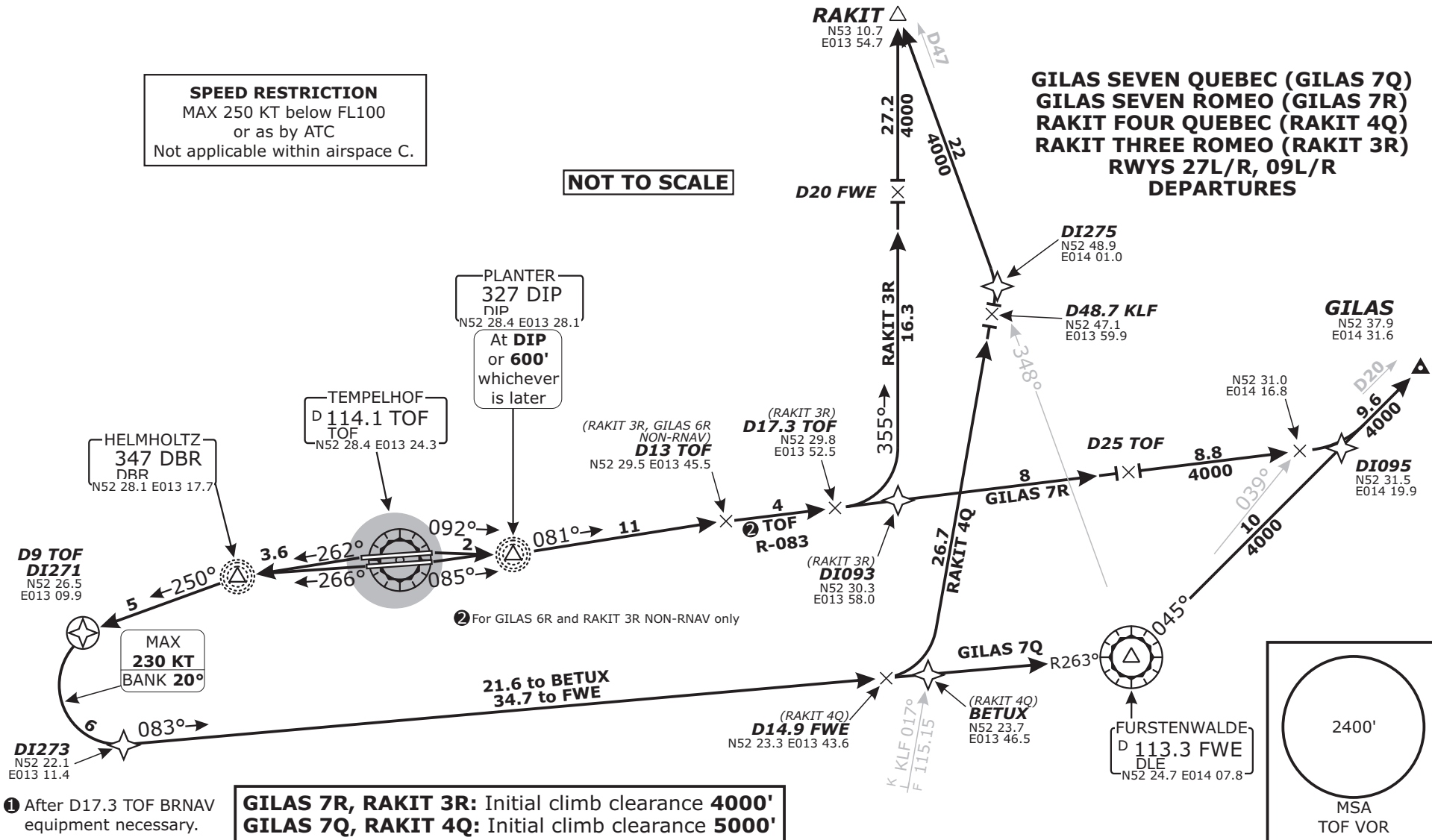
**Radar:** Bremen Radar 123.220 Tower: 119.57  
**Departure:** Bremen Radar 120.620 Ground: 121.95  
**Arrival:** Bremen Radar 119.700 ATIS: 126.03  
 Bremen Radar 126.420  
 Trans level: by ATC  
 1. Remain on TWR frequency until passing altitude 2000 ft, then contact Bremen Radar

**EDDI/THF TEMPELHOF**  
 SID CHART NO.1  
 Revision 14 MAY 08  
 Effective 07 JUL 06  
**BERLIN, GERMANY**

**Valid for flight simulation use only - do not use for real life navigation**

**Radar:** Bremen Radar 123.220  
**Departure:** Bremen Radar 120.620  
**Arrival:** Bremen Radar 119.700  
**Bremen Radar** 126.420  
**Tower:** 119.57  
**Ground:** 121.95  
**ATIS:** 126.03  
**Trans level:** by ATC  
**Trans alt:** 5000'  
**1. Remain on TWR frequency until passing altitude 2000 ft, then contact Bremen Radar**

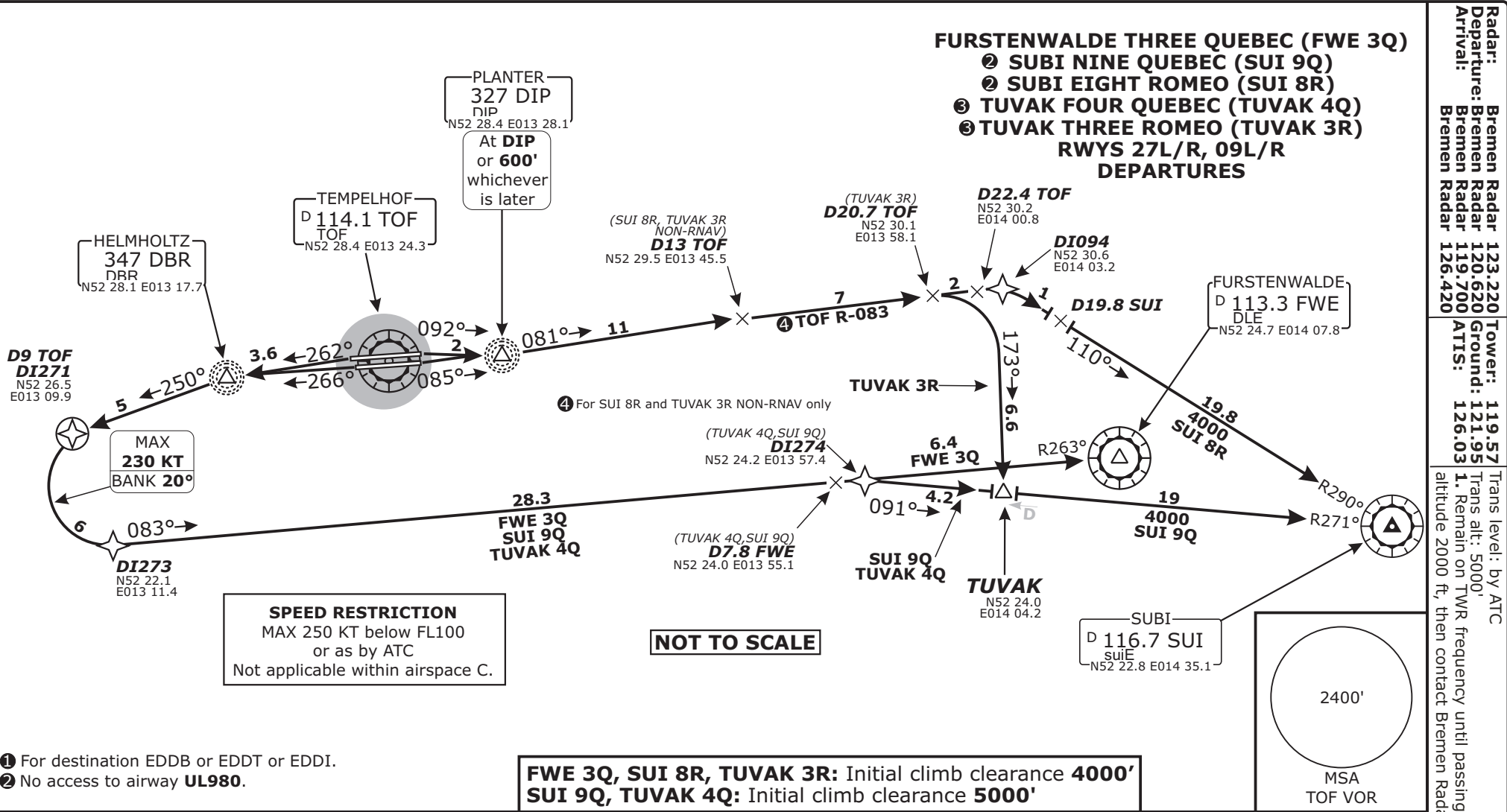
**GILAS SEVEN QUEBEC (GILAS 7Q)  
GILAS SEVEN ROMEO (GILAS 7R)  
RAKIT FOUR QUEBEC (RAKIT 4Q)  
RAKIT THREE ROMEO (RAKIT 3R)  
RWYS 27L/R, 09L/R  
DEPARTURES**



**GILAS 7R, RAKIT 3R: Initial climb clearance 4000'**  
**GILAS 7Q, RAKIT 4Q: Initial climb clearance 5000'**

SID	RWY	ROUTING	GPS/FMS RNAV
<b>GILAS 7Q</b>	<b>27L/R</b>	To DBR, turn LEFT, 250° bearing to D9 TOF, turn LEFT, intercept FWE R-263 inbound to FWE, turn LEFT, FWE R-045 to GILAS.	<b>(600'+)</b> - DBR - DI271 - DI273 (K230-) - FWE - GILAS.
<b>GILAS 7R</b>	<b>09L/R</b>	To DIP or 600', whichever is later, turn LEFT, 081° bearing, intercept TOF R-083, when passing FWE R-039 turn LEFT, intercept FWE R-045 to GILAS.	<b>(600'+)</b> - DIP - DI095 - GILAS.
<b>RAKIT 4Q</b>	<b>27L/R</b>	To DBR, turn LEFT, 250° bearing to D9 TOF, turn LEFT, intercept FWE R-263 inbound to D15 FWE, turn LEFT, intercept KLF R-017 to D48.7 KLF, turn LEFT, intercept FWE R-348 to RAKIT.	<b>(600'+)</b> - DBR - DI271 - DI273 (K230-) - BETUX - DI275 - RAKIT.
<b>RAKIT 3R</b>	<b>09L/R</b>	To DIP or 600', whichever is later, turn LEFT, 081° bearing, intercept TOF R-083 to D17.3 TOF, turn LEFT, 355° track to RAKIT.	<b>(600'+)</b> - DIP - DI093 - RAKIT.

**Valid for flight simulation use only - do not use for real life navigation**



- ① For destination EDDB or EDDT or EDDI.
- ② No access to airway **UL980**.

SID	RWY	ROUTING	GPS/FMS RNAV
<b>FWE 3Q</b> ①	<b>27L/R</b>	To DBR, turn LEFT, 250° bearing to D9 TOF, turn LEFT, intercept FWE R-263 inbound FWE.	<b>(600'+)</b> - DBR - DI271 - DI273 (K230-) - FWE.
<b>SUI 9Q</b>		To DBR, turn LEFT, 250° bearing to D9 TOF, turn LEFT, intercept FWE R-263 inbound to D7.8 FWE, turn RIGHT, intercept SUI R-271 inbound to SUI.	<b>(600'+)</b> - DBR - DI271 - DI273 (K230-) - DI274 - SUI.
<b>SUI 8R</b>	<b>09L/R</b>	To DIP or <b>600'</b> , whichever is later, turn LEFT, 081° bearing, intercept TOF R-083 to D22.4 TOF, turn RIGHT, intercept SUI R-290 inbound to SUI.	<b>(600'+)</b> - DIP - DI094 - SUI.
<b>TUVAK 4Q</b> ②	<b>27L/R</b>	To DBR, turn LEFT, 250° bearing to D9 TOF, turn LEFT, intercept FWE R-263 inbound to D7.8 FWE, turn RIGHT, intercept SUI R-271 inbound to TUVAK.	<b>(600'+)</b> - DBR - DI271 - DI273 (K230-) - DI274 - TUVAK.
<b>TUVAK 3R</b> ②	<b>09L/R</b>	To DIP or <b>600'</b> , whichever is later, turn LEFT, 081° bearing, intercept TOF R-083 to D20.7 TOF, turn RIGHT, 173° track to TUVAK.	<b>(600'+)</b> - DIP - DI094 - TUVAK.

**Valid for flight simulation use only - do not use for real life navigation**