

Valid for flight simulation use only - do not use for real life navigation

APP CHART NO.2  
Revision 14 MAY 08  
Effective 29 SEP 05

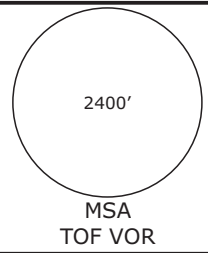
# BERLIN, GERMANY ILS or LOC Rwy 27L

## EDDI/THF TEMPELHOF

**Radar:** Bremen Radar 123.220  
**Arrival:** Bremen Radar 119.700  
**Director:** Berlin Director 121.120

**Tower:** 119.57  
**Ground:** 121.95  
**ATIS:** 126.03

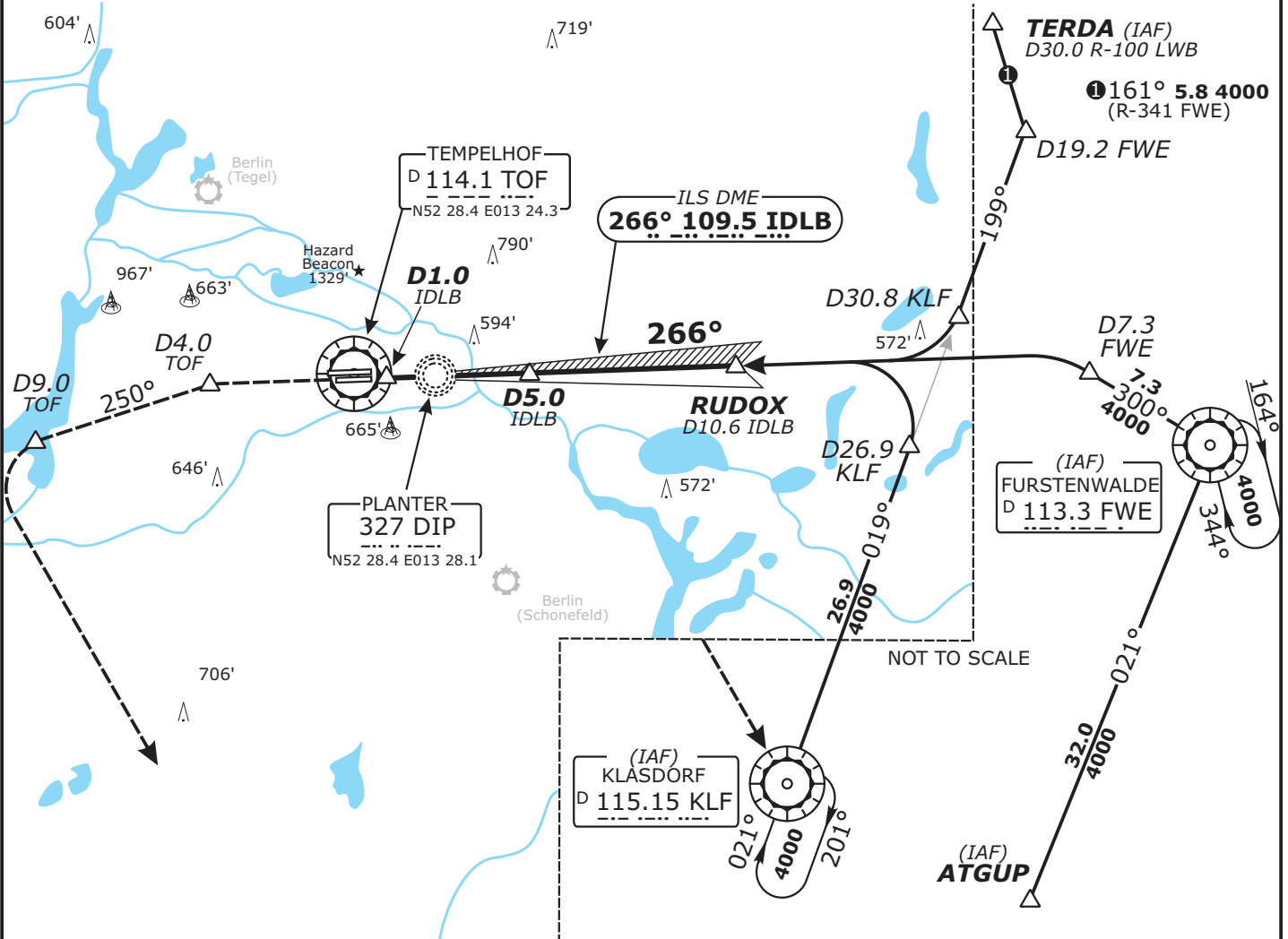
Trans level: by ATC  
Trans alt: 5000'  
1. Remain on TWR frequency until passing altitude 2000 ft, then contact Bremen Radar



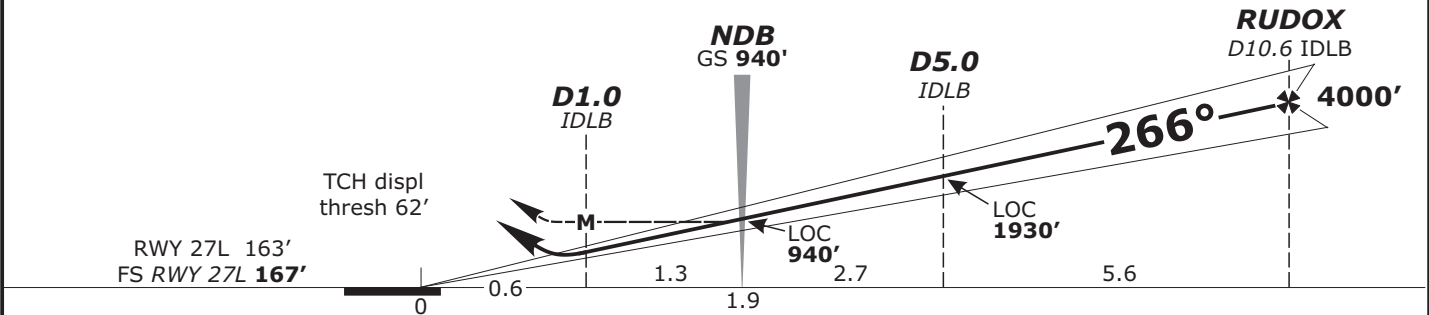
LOC IDLB <b>109.5</b>	Final Apch Crs <b>266°</b>	GS NDB <b>940'</b> (773')	ILS DA(H) Refer to Minimums	Apt Elev 167' FS: RWY 167' RWY 163'
--------------------------	-------------------------------	------------------------------	--------------------------------	---

**MISSED APCH:** Climb on rwy track to MAX 3000'. At D4.0 West of TOF continue climb to 4000' and turn LEFT on track 250°. At D9.0 TOF turn LEFT KLF VOR.

LOC: **DME REQUIRED.**



LOC (GS out)	IDIB DME	2.0	3.0	4.0	5.0	6.0	7.0	8.0	9.0	10.0
	ALTITUDE	820'	1190'	1560'	1930'	2310'	2680'	3050'	3420'	3790'



<b>Flight Simulator-OPS</b>		<b>STRAIGHT-IN LANDING RWY 27L</b>					
<b>ILS</b> DA(H) A: 420' (253') C: 444' (277') B: 432' (265') D: 456' (289')		<b>LOC (GS out)</b> MDA(H) 580' (413')				Gnd speed-Kts 70 90 100 120 140 160	
A		RVR 900m				ILS GS 3.50° or LOC Descent Gradient 6.1% 439 564 627 752 877 1003	
B		RVR 1000m				MAP at D1.0 IDLB	
C		RVR 650m					
D		RVR 1400m					

CHANGES: Communications