

Valid for flight simulation use only - do not use for real life navigation

APP CHART NO.1
Revision 14 MAY 08
Effective 23 NOV 06

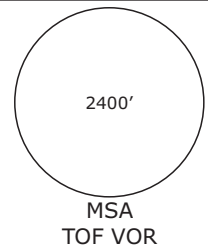
BERLIN, GERMANY ILS or LOC Rwy 09R

EDDI/THF TEMPELHOF

Radar: Bremen Radar 123.220
Arrival: Bremen Radar 119.700
Director: Berlin Director 121.120

Tower: 119.57
Ground: 121.95
ATIS: 126.03

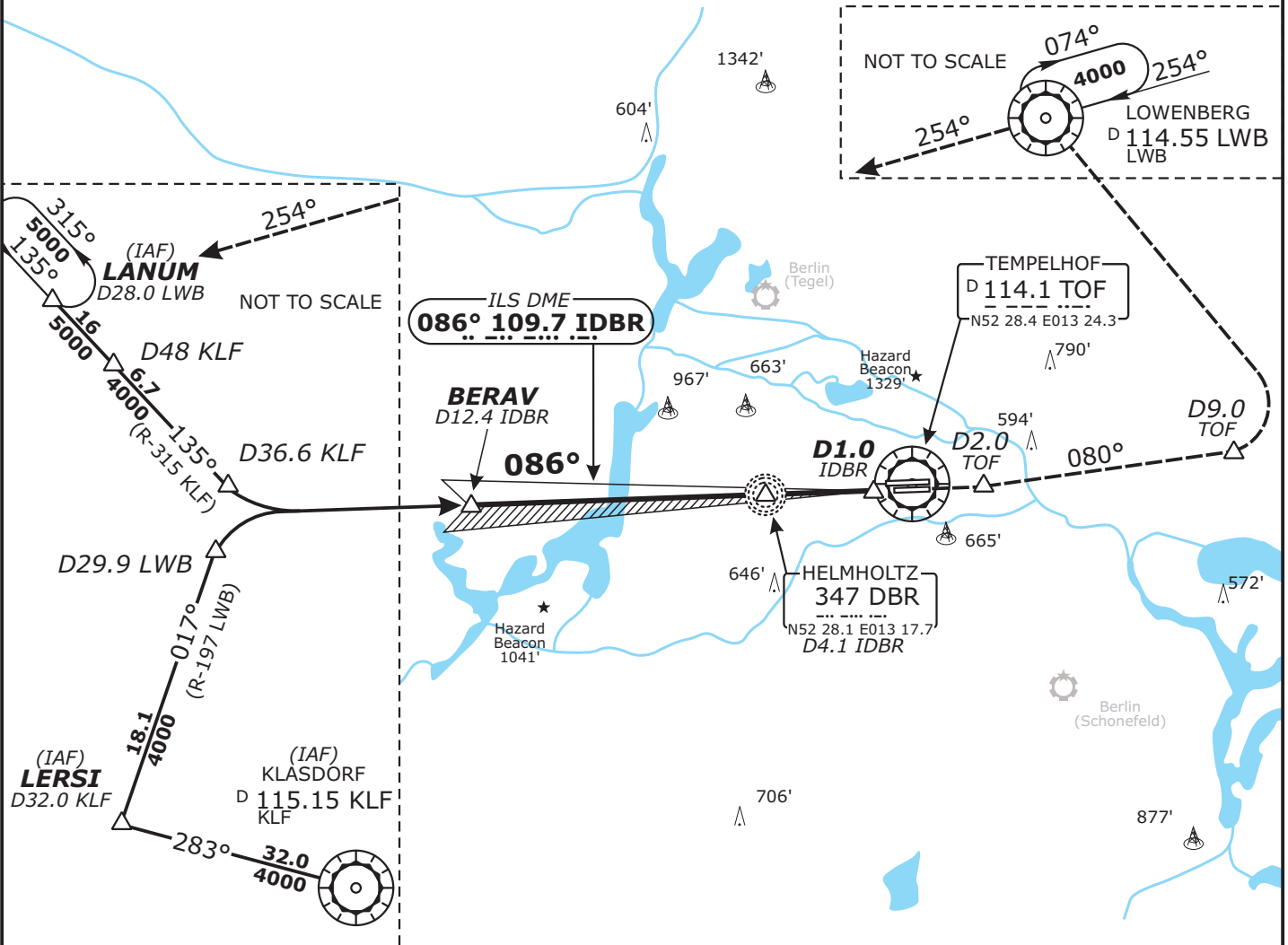
Trans level: by ATC
Trans alt: 5000'
1. Remain on TWR frequency until passing altitude 2000 ft, then contact Bremen Radar



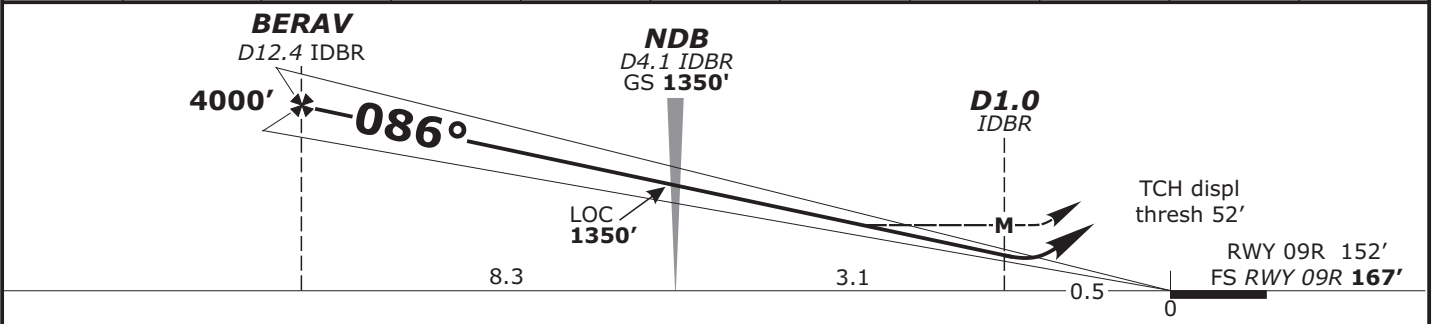
| | | | | |
|--------------------------|-------------------------------|--------------------------------|--------------------------------|---|
| LOC IDBR 109.7 | Final Apch Crs 086° | GS NDB 1350' (1183') | ILS DA(H) Refer to Minimums | Apt Elev 167' FS: RWY 167' RWY 152' |
|--------------------------|-------------------------------|--------------------------------|--------------------------------|---|

MISSED APCH: Climb on rwy track to MAX 3000'. At D2.0 East of TOF continue climb to 5000' and turn LEFT on track 080°. At D9.0 TOF turn LEFT via LWB VOR to LANUM.

LOC: DME REQUIRED.



| LOC (GS out) | IDBR DME | 12.0 | 10.0 | 9.0 | 8.0 | 7.0 | 6.0 | 5.0 | 4.0 | 3.0 |
|--------------|----------|-------|-------|-------|-------|-------|-------|-------|-------|------|
| | ALTITUDE | 3870' | 3230' | 2920' | 2600' | 2280' | 1960' | 1640' | 1320' | 690' |



Flight Simulator-OPS

| STRAIGHT-IN LANDING RWY 09R | |
|--|---|
| ILS DA(H) A: 407' (240') C: 427' (260') B: 417' (250') D: 437' (270') | LOC (GS out) MDA(H) 640' (473') |
| A | RVR 1000m |
| B | RVR 600m |
| C | RVR 1200m |
| D | RVR 650m |
| | RVR 1600m |

| | | | | | | |
|--|-----|-----|-----|-----|-----|-----|
| Gnd speed-Kts | 70 | 90 | 100 | 120 | 140 | 160 |
| ILS GS 3.00° or LOC Descent Gradient 5.2% | 377 | 484 | 538 | 646 | 753 | 861 |
| MAP at D1.0 IDBR | | | | | | |

CHANGES: Communications