

Erfurt, GERMANY



Erfurt (ERF)

Effective 2009-11-19

EDDE
SID Rwy 10

München Radar
126.170 133.570 131.020 129.100

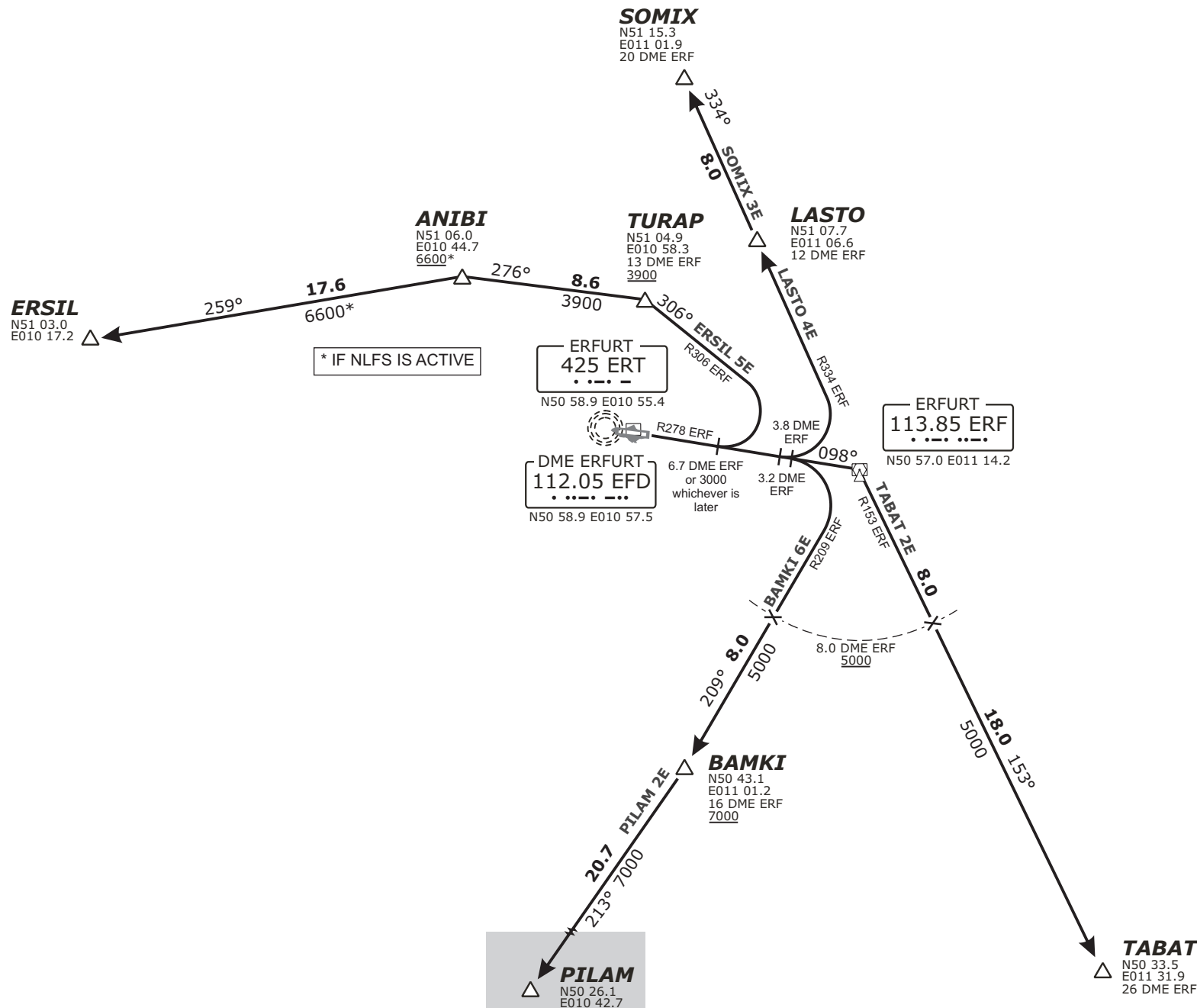
Erfurt Tower
121.150

Erfurt Ground
121.750

Erfurt Apron
121.900

MSA 25 NM from
ERT NDB

**BAMKI SIX ECHO (BAMKIGE)
ERSIL FIVE ECHO (ERSIL5E)
LASTO FOUR ECHO (LASTO4E)
PILAM TWO ECHO (PILAM2E)
SOMIX THREE ECHO (SOMIX3E)
TABAT TWO ECHO (TABAT2E)**



Valid for flight simulation use only - do not use for real life navigation

München Radar 126.170 133.570 131.020 129.100		Erfurt Tower 121.150	Erfurt Ground 121.750	Erfurt Apron 121.900	MSA 25 NM from ERT NDB
Designator	Route	After Take-Off		Remarks	
1	2	Climb to	Contact	5	
ERSIL 5E	ERSIL FIVE ECHO On R278 ERF to 6.7 DME ERF or 3000, whichever is later, LT, on R306 ERF to TURAP, LT, on track 276° to ANIBI, LT on track 259° to ERSIL. Cross TURAP at 3900 or above. During activity of NLFS cross ANIBI at 6600 or above. GPS/FMS RNAV: [A1500+] - DE101[A3000+; L] - DE102 - TURAP[A3900+; L] - ANIBI[L] - ERSIL.	5000 ft	München Radar 126.170 if not available: München Radar 133.570 131.020 129.100	1. After TURAP BRNAV equipment necessary. 2. If unable to comply request alternate route by ATC.	
BAMKI 6E	BAMKI SIX ECHO On R278 ERF to 3.2 DME ERF, RT, on R209 ERF to BAMKI. Cross 8.0 DME outbound ERF at 5000 or above. GPS/FMS RNAV: [A1500+] - DE103[R] - DE104 - DE107[A5000+] - BAMKI.				
SOMIX 3E	SOMIX THREE ECHO On R278 ERF to 3.8 DME ERF, LT, on R334 ERF to SOMIX. GPS/FMS RNAV: [A1500+] - DE105[L] - DE106 - SOMIX.				
LASTO 4E	LASTO FOUR ECHO On R278 ERF to 3.8 DME ERF, LT, on R334 ERF to LASTO. GPS/FMS RNAV: [A1500+] - DE105[L] - DE106 - LASTO.				No access to (U)M852.
PILAM 2E	PILAM TWO ECHO On R278 ERF to 3.2 DME ERF, RT, on R209 ERF to BAMKI, RT, on track 213° to PILAM. Cross 8.0 DME outbound ERF at 5000 or above. Cross BAMKI at 7000 or above. GPS/FMS RNAV: [A1500+] - DE103[R] - DE104 - DE107[A5000+] - BAMKI[A7000+; R] - PILAM.				1. Not to be filed in flight plan, on request by ATC only. 2. After BAMKI BRNAV equipment necessary. 3. Flights planned to proceed via UZ94 shall cross GORKO at FL260 or above. If unable to comply request alternate route by ATC.
TABAT 2E	TABAT TWO ECHO On R278 ERF to ERF, RT, on R153 ERF to TABAT. Cross 8.0 DME outbound ERF at 5000 or above. GPS/FMS RNAV: [A1500+] - ERF[R] - DE108[A5000+] - TABAT.				

(Sample: DE101 fly-over way point)

Contact München Radar immediately after take-off!

Valid for flight simulation use only - do not use for real life navigation

Revision: 2010-10-28. Changes: PILAM 2E remarks; comm. frequencies.

Erfurt, GERMANY
Erfurt (ERF)



Effective 2009-11-19

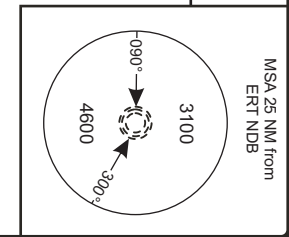
EDDE
GPS/FMS RNAV SID Rwy 10

München Radar
126.170 133.570 131.020 129.100

Erfurt Tower
121.150

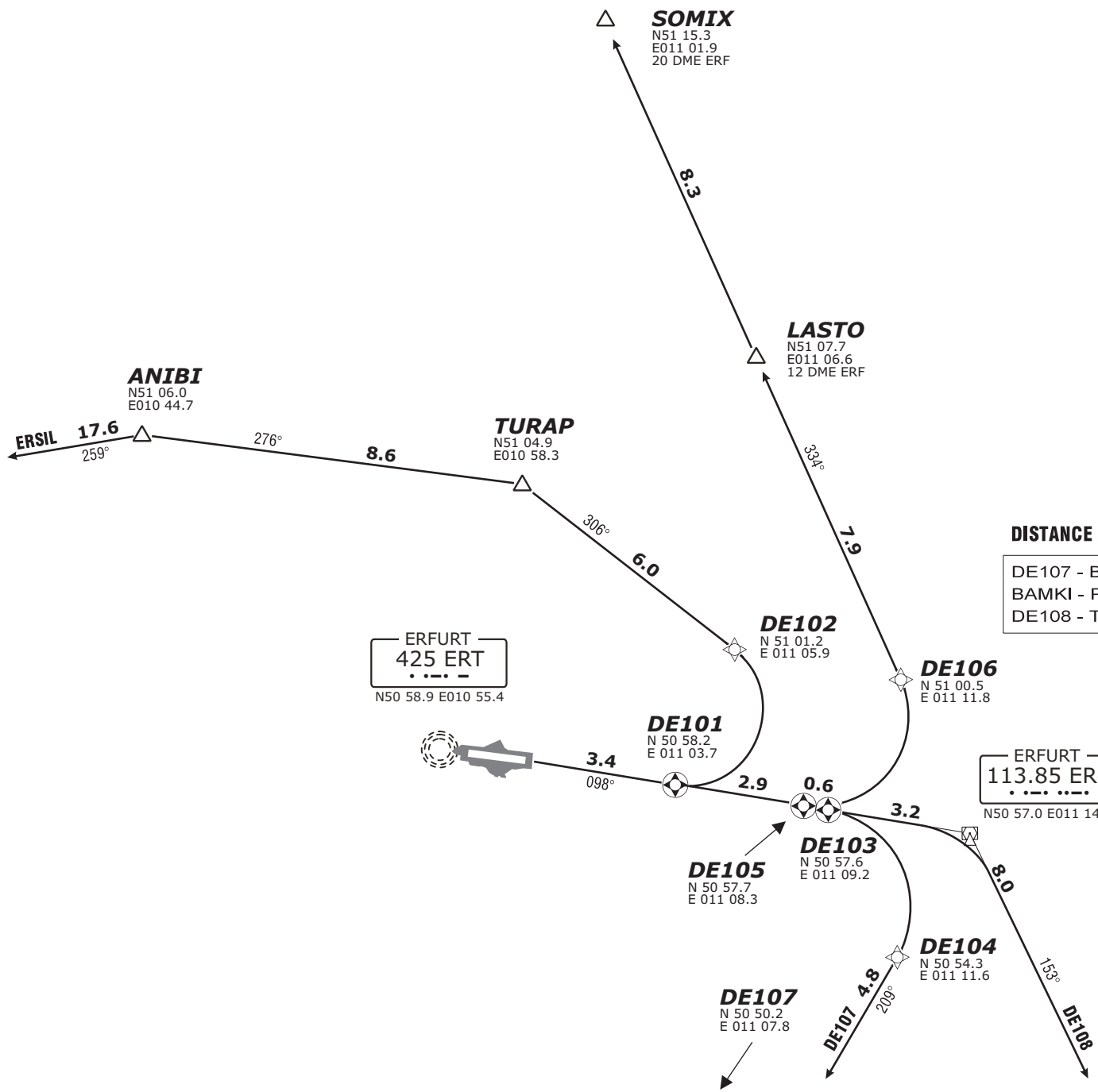
Erfurt Ground
121.750

Erfurt Apron
121.900



DISTANCE / BEARING

DE107 - BAMKI	8.2 NM / 209° (T210.5°)
BAMKI - PILAM	20.7 NM / 213° (T215.0°)
DE108 - TABAT	18.1 NM / 153° (T154.4°)



Valid for flight simulation use only - do not use for real life navigation

München Radar
126.170 133.570 131.020 129.100

Erfurt Tower
121.150

Erfurt Ground
121.750

Erfurt Apron
121.900

**BANKI FIVE WHISKEY (BANKI5W)
ERSIL THREE WHISKEY (ERSIL3W)
ERSIL THREE NOVEMBER (ERSIL3N)
LASTO FIVE WHISKEY (LASTO5W)
PILAM TWO WHISKEY (PILAM2W)
SOMIX SIX WHISKEY (SOMIX6W)
TABAT TWO WHISKEY (TABAT2W)**

GOTEM
115.25 GOT

N51 20.6 E011 35.8

ERFURT
113.85 ERF

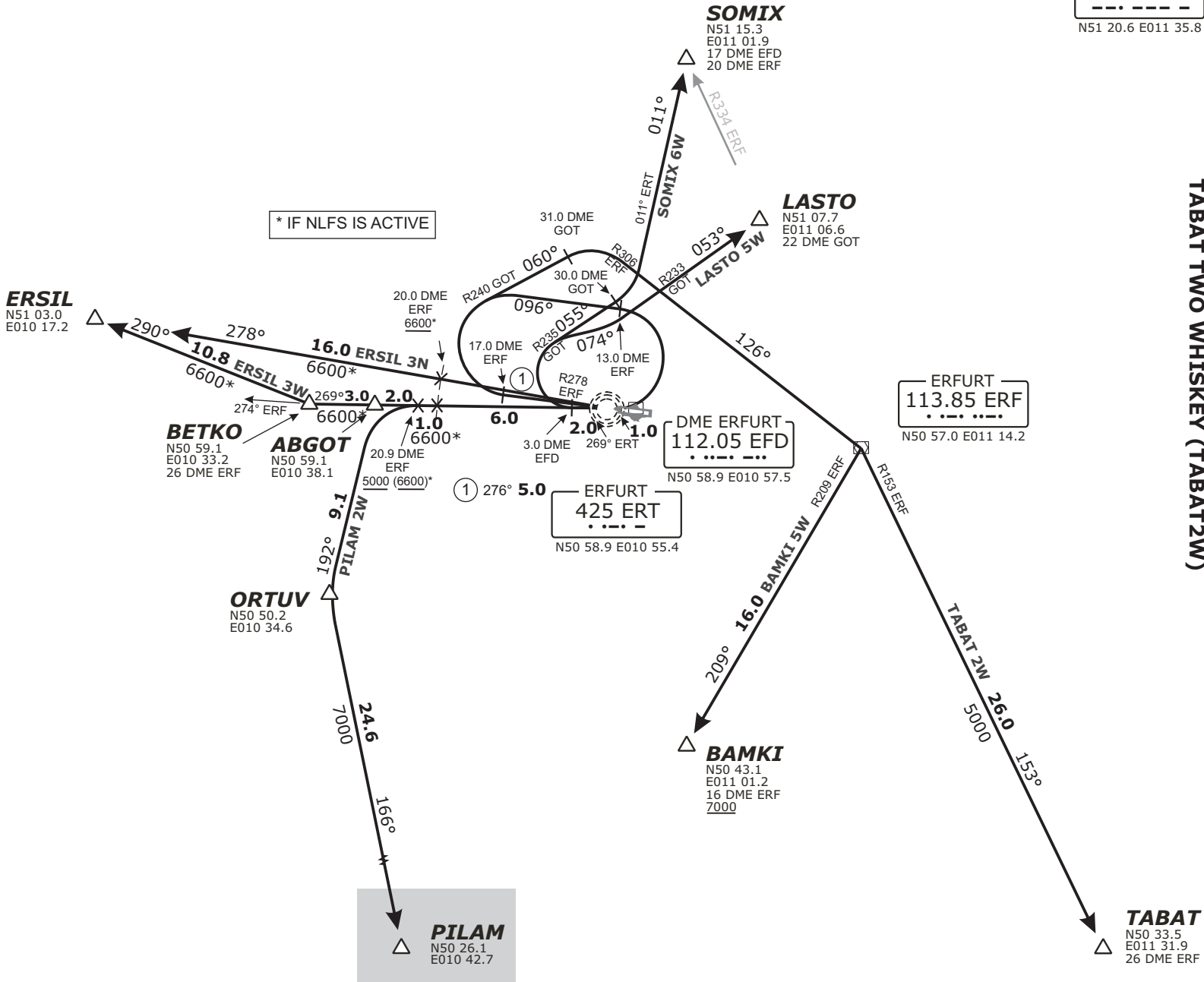
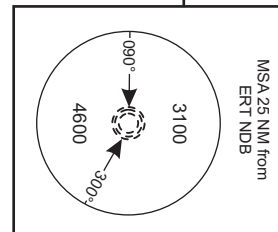
N50 57.0 E011 14.2

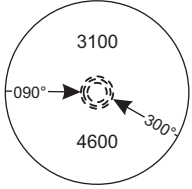
DME ERFURT
112.05 EFD

N50 58.9 E010 57.5

ERFURT
425 ERT

N50 58.9 E010 55.4



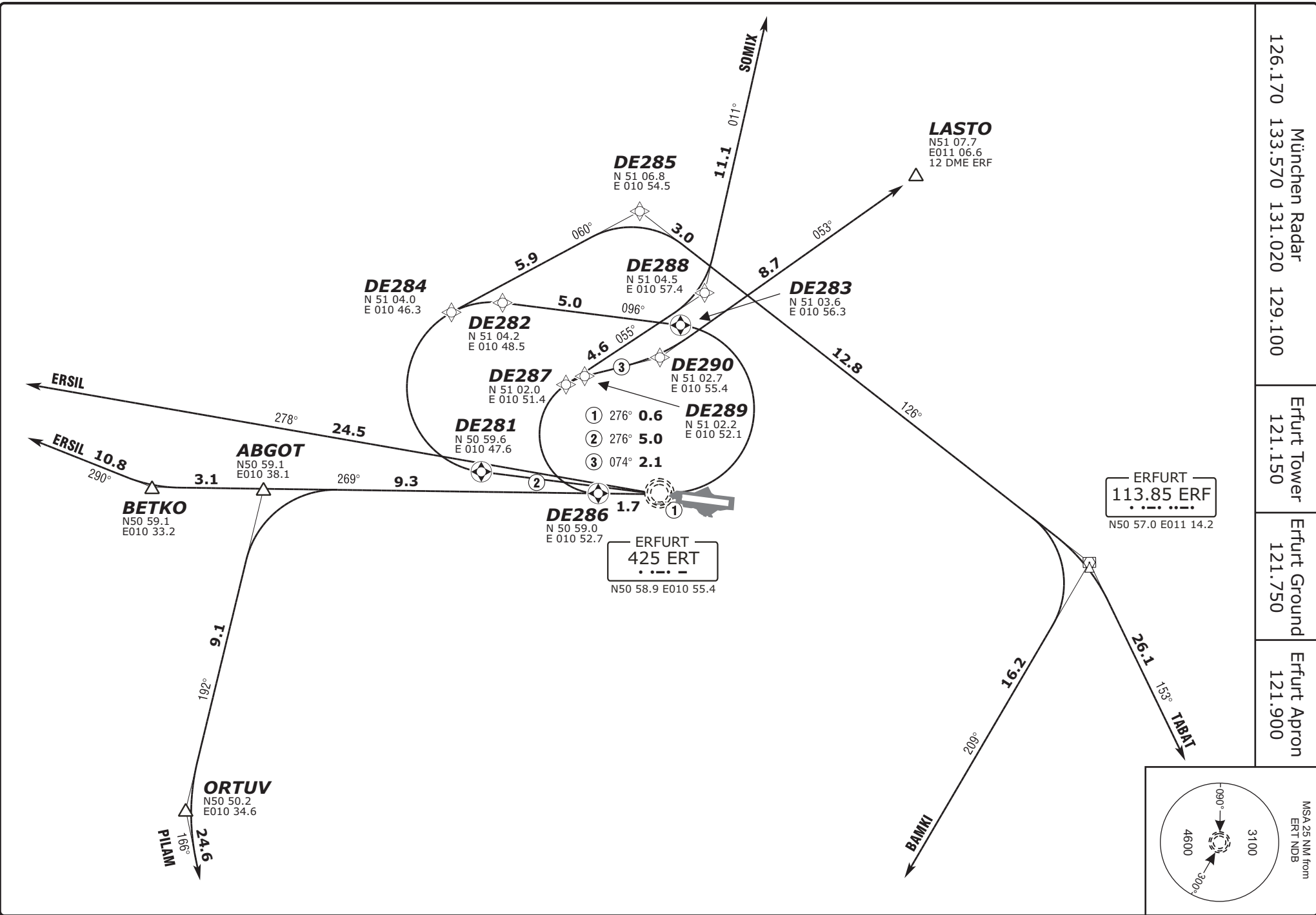
München Radar 126.170 133.570 131.020 129.100		Erfurt Tower 121.150	Erfurt Ground 121.750	Erfurt Apron 121.900	MSA 25 NM from ERT NDB 
Designator	Route	After Take-Off		Remarks	
		Climb to	Contact		
1	2	3	4	5	
ERSIL 3W	ERSIL THREE WHISKEY Direct to ERT, LT, on track 269° ERT to BETKO, RT, on track 290° to ERSIL. During activity of NLFS cross 20.0 DME ERF at 6600 or above (MNM PDG 620 ft/NM). GPS/FMS RNAV: [A1500+] - ERT[L] - BETKO[R] - ERSIL.	5000 ft	München Radar 126.170 if not available: München Radar 133.570 131.020 129.100	1. After BETKO BRNAV equipment necessary. 2. If unable to comply request alternate route by ATC.	
ERSIL 3N	ERSIL THREE NOVEMBER On RWY track via ERT to 17.0 DME ERF, RT, on track 096° to 13.0 DME ERF, RT to ERT, on R278 ERF to ERSIL. Cross 20.0 DME ERF at 6600 or above. GPS/FMS RNAV: [A1500+] - ERT - <u>DE281</u> [R] - DE282 - <u>DE283</u> [R] - ERT - ERSIL.			To be used during activity of NLFS.	
BAMKI 5W	BAMKI FIVE WHISKEY On RWY track via ERT to 17.0 DME ERF, RT, on R240 GOT to 31.0 DME GOT, RT, on R306 ERF to ERF, on R209 ERF to BAMKI. GPS/FMS RNAV: [A1500+] - ERT - <u>DE281</u> [R] - DE284 - <u>DE285</u> [R] - ERF[R] - BAMKI.				
SOMIX 6W	SOMIX SIX WHISKEY Direct to ERT, LT, on track 269° ERT to 3.0 DME EFD, RT, on R235 GOT to 30.0 DME GOT, LT, on track 011° ERT to SOMIX. GPS/FMS RNAV: [A1500+] - ERT[L] - <u>DE286</u> [R] - DE287 - <u>DE288</u> [L] - SOMIX.				
LASTO 5W	LASTO FIVE WHISKEY Direct to ERT, LT, on track 269° ERT to 3.0 DME EFD, RT, on track 074° to intercept R233 GOT to LASTO. GPS/FMS RNAV: [A1500+] - ERT[L] - <u>DE286</u> [R] - DE289 - <u>DE290</u> [L] - LASTO.			No access to (U)M852.	
PILAM 2W	PILAM TWO WHISKEY Direct to ERT, LT, on track 269° ERT to 20.9 DME ERF, LT, on track 192° to ORTUV, LT, on track 166° to PILAM. Cross 20.9 DME ERF at 5000 or above. During activity of NLFS cross 20.0 DME ERF at 6600 or above (MNM PDG 620 ft/NM). GPS/FMS RNAV: [A1500+] - ERT[L] - ABGOT[A5000+; L] - ORTUV[A7000+; L] -PILAM.			1. Not to be filed in flight plan, on request by ATC only. 2. After 20.9 DME ERF BRNAV equipment necessary. 3. Flights planned to proceed via UZ94 shall cross GORKO at FL260 or above. If unable to comply file SID BAMKI.	
TABAT 2W	TABAT TWO WHISKEY On RWY track via ERT to 17.0 DME ERF, RT, on R240 GOT to 31.0 DME GOT, RT, on R306 ERF to ERF, on R153 ERF to TABAT. GPS/FMS RNAV: [A1500+] - ERT - <u>DE281</u> [R] - DE284 - <u>DE285</u> [R] - ERF[A5000+; R] - TABAT.				

(Sample: DE281 fly-over way point)

Contact München Radar immediately after take-off!

Valid for flight simulation use only - do not use for real life navigation

Revision: 2010-10-28. Changes: PILAM 2W remarks; comm. frequencies.



Valid for flight simulation use only - do not use for real life navigation