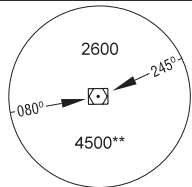


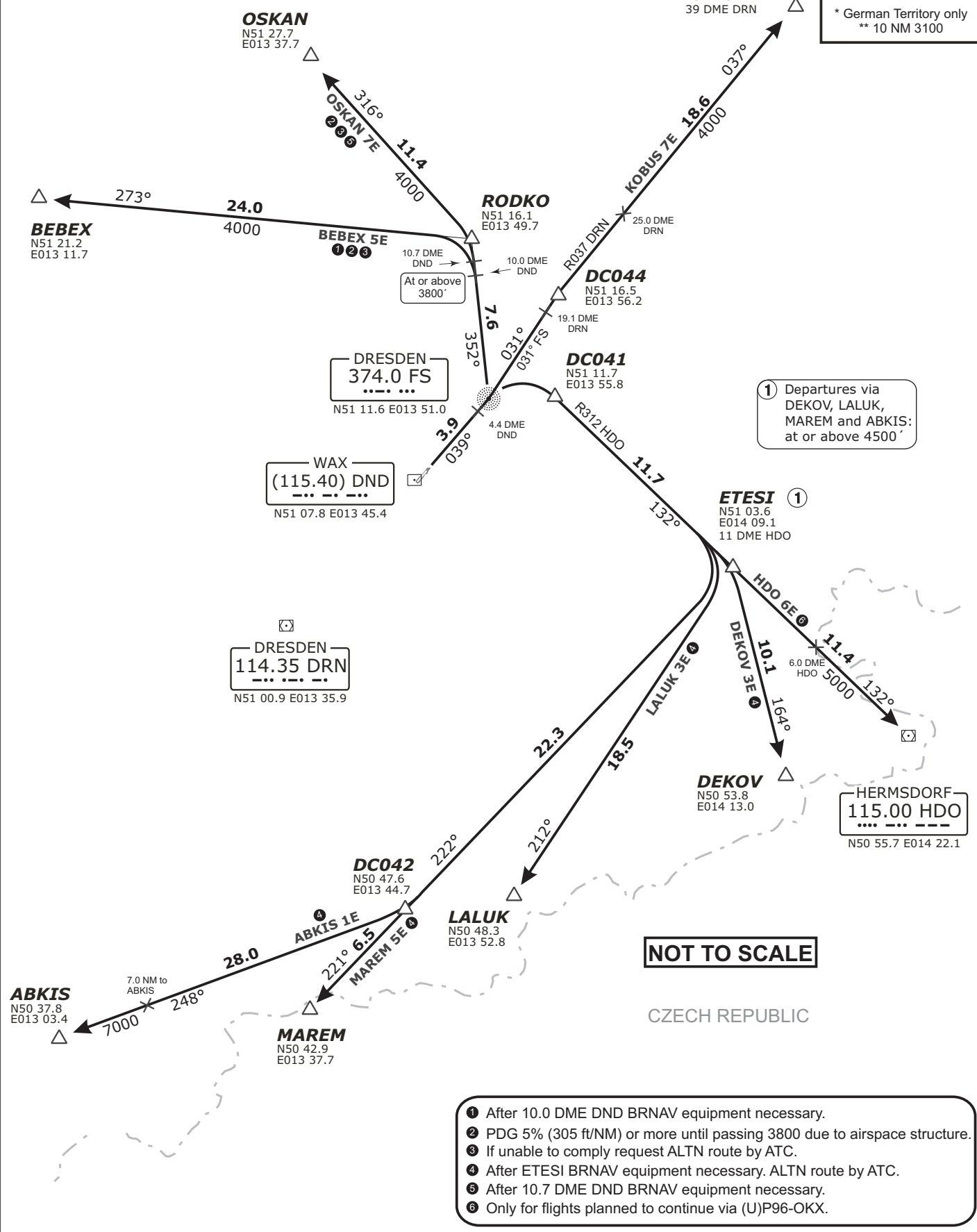
MÜNCHEN RADAR	125.620	126.170	TOWER	122.920	Mag. Variation	2° E		
	131.020	129.100		GROUND		121.970	Elevation	754'
				APRON		121.750	Transition altitude	5000'
				ATIS		118.870	Transition level	by ATC



MSA 25 NM
DRN DVORDME*
* German Territory only
** 10 NM 3100

Contact München Radar immediately after take-off!

Initial climb clearance **5000'**



① Departures via DEKOV, LALUK, MAREM and ABKIS: at or above 4500'

- ① After 10.0 DME DND BRNAV equipment necessary.
- ② PDG 5% (305 ft/NM) or more until passing 3800 due to airspace structure.
- ③ If unable to comply request ALTN route by ATC.
- ④ After ETESI BRNAV equipment necessary. ALTN route by ATC.
- ⑤ After 10.7 DME DND BRNAV equipment necessary.
- ⑥ Only for flights planned to continue via (U)P96-OKX.

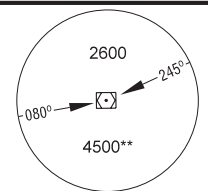
Revision: 2010-10-28. Changes: ED-R 75 withdrawn.

Valid for flight simulation use only - do not use for real life navigation

MÜNCHEN RADAR 125.620 126.170
131.020 129.100

TOWER 122.920
GROUND 121.970
APRON 121.750
ATIS 118.870

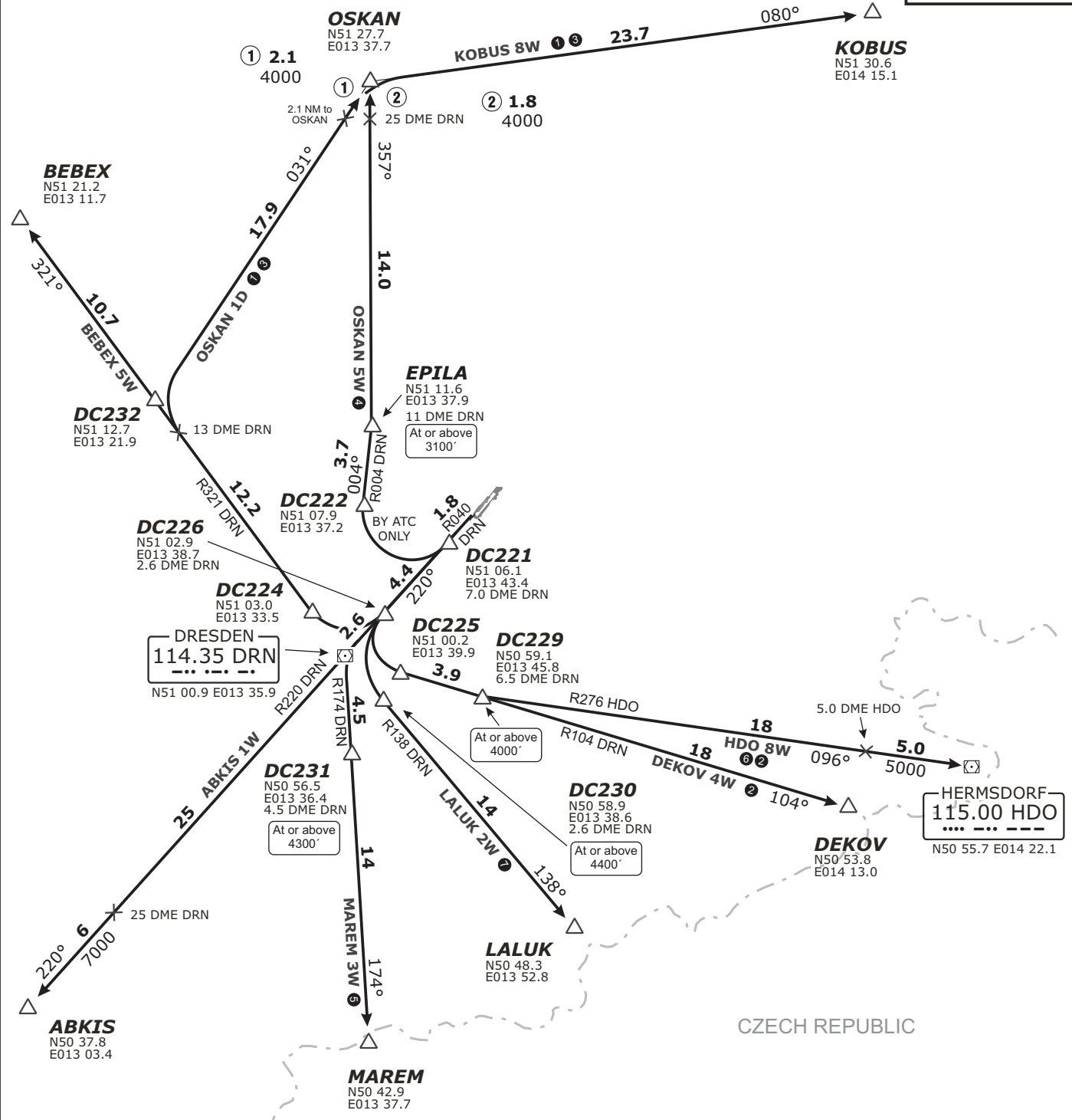
Mag. Variation 2° E
Elevation 754'
Transition altitude 5000'
Transition level by ATC



MSA 25 NM
DRN DVORDME*
* German Territory only
** 10 NM 3100

Contact München Radar immediately after take-off!

Initial climb clearance 5000'



- ① After 13.0 DME DND BRNAV equipment necessary.
- ② PDG 4% (245 ft/NM) or more until crossing 6.5 DME outbound DRN due to airspace structure.
- ③ If unable to comply request ALTN route by ATC.
- ④ Not to be filed in flight plan. Advised by ATC only.
- ⑤ PDG 4.5% (275 ft/NM) or more until crossing 4.5 DME outbound DRN due to airspace structure.
- ⑥ Only for flights planned to continue via (U)P96-OKX.
- ⑦ PDG 5.8% (350 ft/NM) or more until crossing 4.5 DME outbound DRN due to airspace structure.

Valid for flight simulation use only - do not use for real life navigation

Revision: 2010-10-28. Changes: ED-R 75 withdrawn.

Initial climb clearance 5000'

RUNWAY 04

SID	ROUTING	GPS/FMS RNAV
ABKIS 1E	Direct FS (D5.2 DND), RT, on radial 312 HDO to ETESI, RT, on track 222° to DC042, RT, on track 248° to ABKIS. Cross ETESI at 4500' or above.	(1200'+) - <u>FS</u> - DC041 - ETESI (4500'+) - DC042 - ABKIS
BEBEX 5E	On track 039° inbound FS to D4.4 DND, LT, on track 352° FS to D10.0 DND, LT, on track 273° to BEBEX. Cross D10.0 DND at 3800' or above.	(1200'+) - FS - RODKO (3800'+) - BEBEX
DEKOV 3E	Direct FS (D5.2 DND), RT, on radial 312 HDO to ETESI, RT, on track 164° to DEKOV. Cross ETESI at 4500' or above.	(1200'+) - <u>FS</u> - DC041 - ETESI (4500'+) - DEKOV
HDO 6E	Direct FS (D5.2 DND), RT, on radial 312 HDO to HDO.	(1200'+) - <u>FS</u> - DC041 - HDO
KOBUS 7E	Direct FS (D5.2 DND), LT, on track 031° FS to D19.1 DND, RT, to intercept radial 037 DRN, on radial 037 DRN to KOBUS.	(1200'+) - <u>FS</u> - DC044 - KOBUS
LALUK 3E	Direct FS (D5.2 DND), RT, on radial 312 HDO to ETESI, RT, on track 212° to LALUK. Cross ETESI at 4500' or above.	(1200'+) - <u>FS</u> - DC041 - ETESI (4500'+) - LALUK
MAREM 5E	Direct FS (D5.2 DND), RT, on radial 312 HDO to ETESI, RT, on track 222° to MAREM. Cross ETESI at 4500' or above.	(1200'+) - <u>FS</u> - DC041 - ETESI (4500'+) - MAREM
OSKAN 7E	On track 039° inbound FS to D4.4 DND, LT, on track 352° FS to D10.7 DND, LT, on track 316° to OSKAN. Cross D10.7 DND at 3800' or above.	(1200'+) - FS - RODKO (3800'+) - OSKAN

RUNWAY 22

SID	ROUTING	GPS/FMS RNAV
ABKIS 1W	On radial 040 DRN to DRN, on radial 220 DRN to ABKIS	(1200'+) - DRN - ABKIS
BEBEX 5W	On radial 040 DRN to D2.6 DRN, RT, on radial 321 DRN to BEBEX.	(1200'+) - <u>DC226</u> - DC224 - BEBEX
DEKOV 4W	On radial 040 DRN to D2.6 DRN, LT, on radial 104 DRN to DEKOV. Cross D6.5 outbound DRN at 4000' or above.	(1200'+) - <u>DC226</u> - DC225 - DC229 (4000'+) - DEKOV
HDO 8W	On radial 040 DRN to D2.6 DRN, LT, on radial 104 DRN to D6.5 DRN, LT, on radial 276 HDO to HDO. Cross D6.5 outbound DRN at 4000' or above.	(1200'+) - <u>DC226</u> - DC225 - DC229 (4000'+) - HDO
KOBUS 8W	On radial 040 DRN to D2.6 DRN, RT, on radial 321 DRN to D13.0 DRN, RT, on track 031° to OSKAN, RT, on track 080° to KOBUS.	(1200'+) - <u>DC226</u> - DC224 - DC232 - OSKAN - KOBUS
LALUK 2W	On radial 040 DRN to D2.6 DRN, LT, on radial 138 DRN to LALUK. Cross D2.6 outbound DRN at 4400' or above.	(1200'+) - <u>DC226</u> - DC230 (4400'+) - LALUK
MAREM 3W	On radial 040 DRN to D1.0 DRN, LT, on radial 174 DRN to MAREM. Cross D4.5 outbound DRN at 4300' or above.	(1200'+) - DRN - DC231 (4300'+) - MAREM
OSKAN 1D	On radial 040 DRN to D2.6 DRN, RT, on radial 321 DRN to D13.0 DRN, RT, on track 031° to OSKAN.	(1200'+) - <u>DC226</u> - DC224 - DC232 - OSKAN
OSKAN 5W	On radial 040 DRN to D7.0 DRN, RT, on radial 004 DRN to EPILA, LT, on track 357° to OSKAN. Cross EPILA at 3100' or above.	(1200'+) - <u>DC221</u> - DC222 - EPILA (3100'+) - OSKAN

Sample: DC226 fly-over waypoint