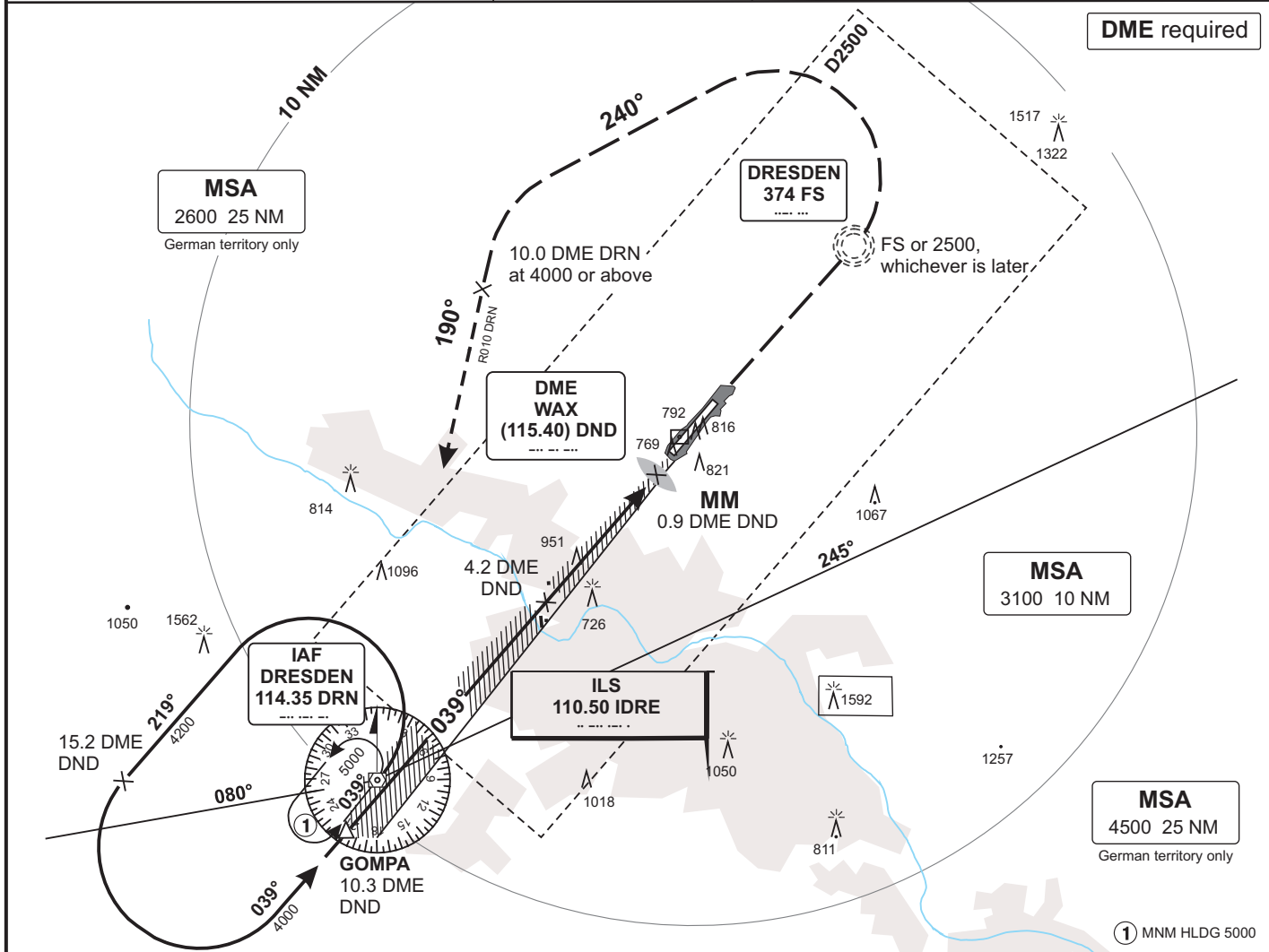
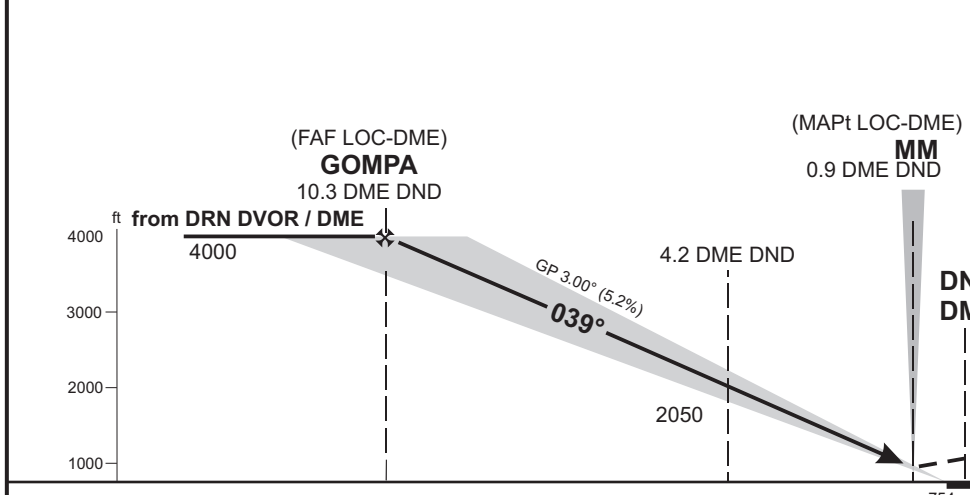


MÜNCHEN RADAR	125.620 126.170	TOWER	122.920	Mag. Variation	2° E		
	131.020 129.100		GROUND		121.970	Elevation	754'
			APRON		121.750	Transition altitude	5000'
			ATIS		118.870	Transition level	by ATC



Missed Approach Procedure
 Climb straight ahead to FS NDB or 2500, whichever is later, LT on track 240° to intercept R010 DRN to DRN DVOR/DME, climbing to 5000. Cross 10.0 DME DRN at 4000 or above.



OCA (OCH)	A	B	C	D	D _L
ILS CAT I	898 (144)	908 (154)	918 (164)	928 (174)	
LOC-DME	1200 (450)	1200 (450)	1200 (450)	1200 (450)	
CIRCLING	1230	1250	1460	1460	

DME DND	10	9	8	7	6	5	4	3	2
DIST THR	9.7	8.7	7.7	6.7	5.7	4.7	3.7	2.7	1.7
ALTITUDE	3900	3580	3260	2940	2620	2310	1990	1670	1350

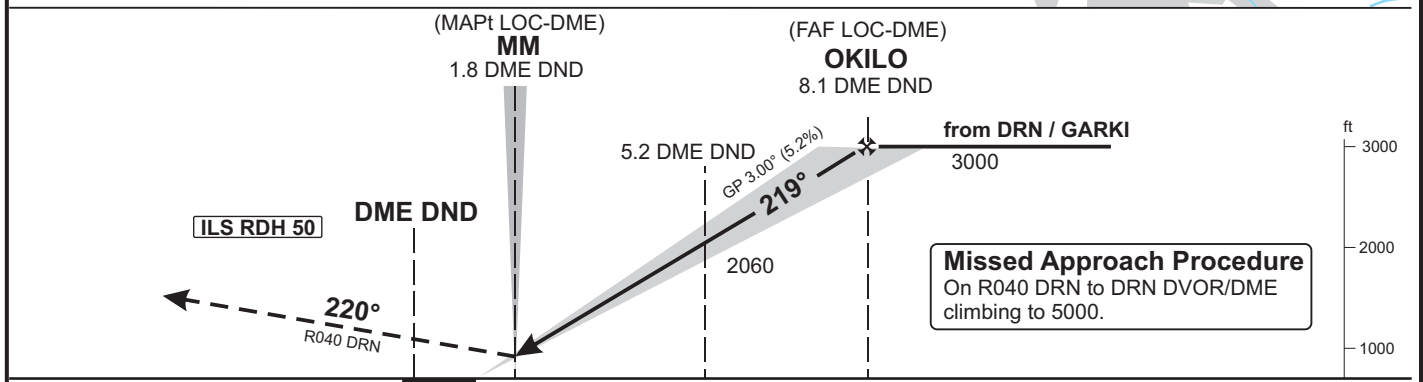
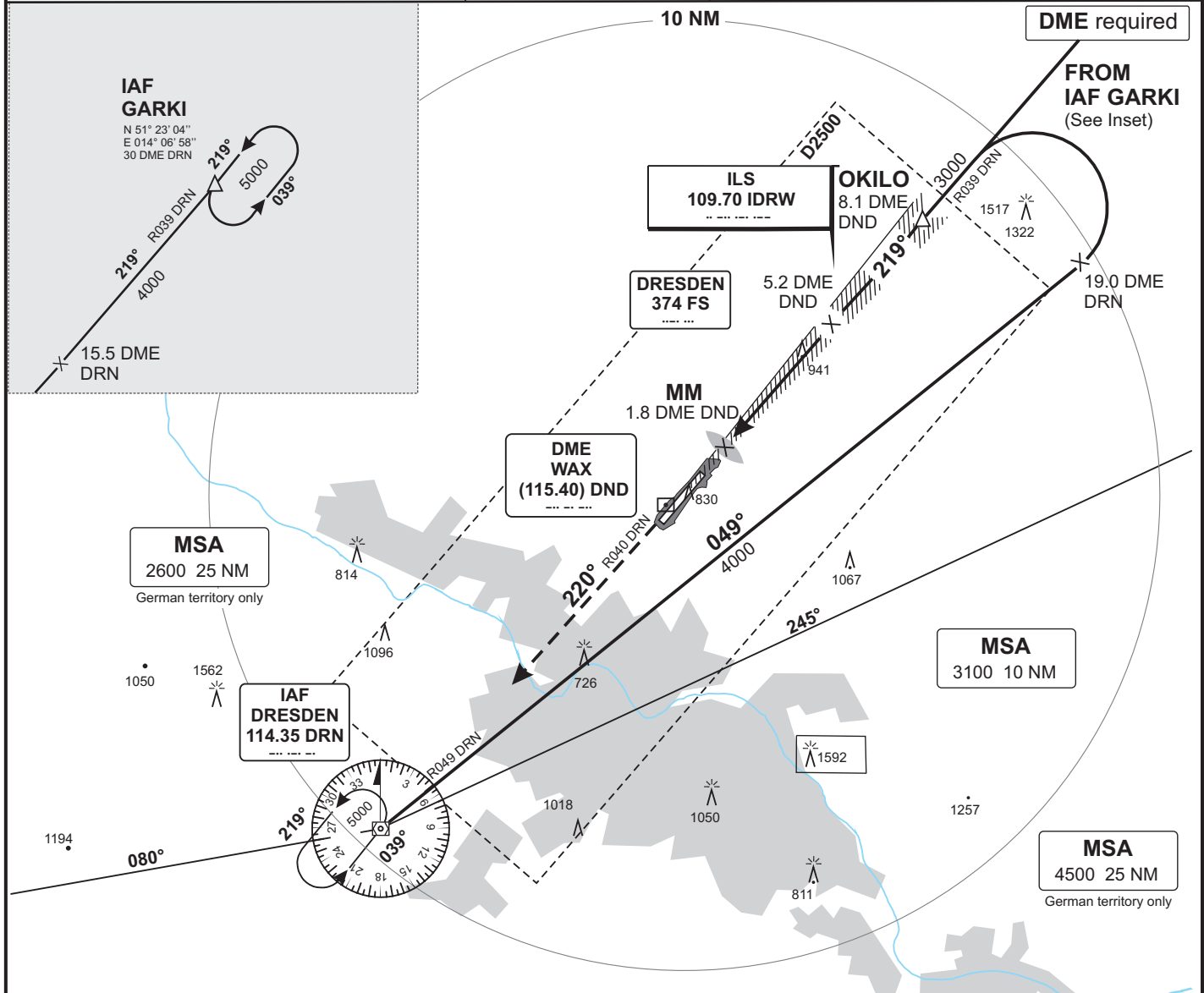
LOC - DME: Timing not authorized for defining the MAPt.

GS	kt	80	100	120	140	160	180
4.2 DME DND - THR (3.9 NM)	MIN:SEC	2:56	2:20	1:57	1:40	1:28	1:18
Rate of descent (5.2%)	ft/MIN	420	530	640	740	850	960

Revision: 2010-05-27. Changes: comm. frequencies.

Valid for flight simulation use only - do not use for real life navigation

MÜNCHEN RADAR	125.620 126.170	TOWER	122.920	Mag. Variation	2° E		
	131.020 129.100		GROUND		121.970	Elevation	754'
			APRON		121.750	Transition altitude	5000'
			ATIS		118.870	Transition level	by ATC



Valid for flight simulation use only - do not use for real life navigation

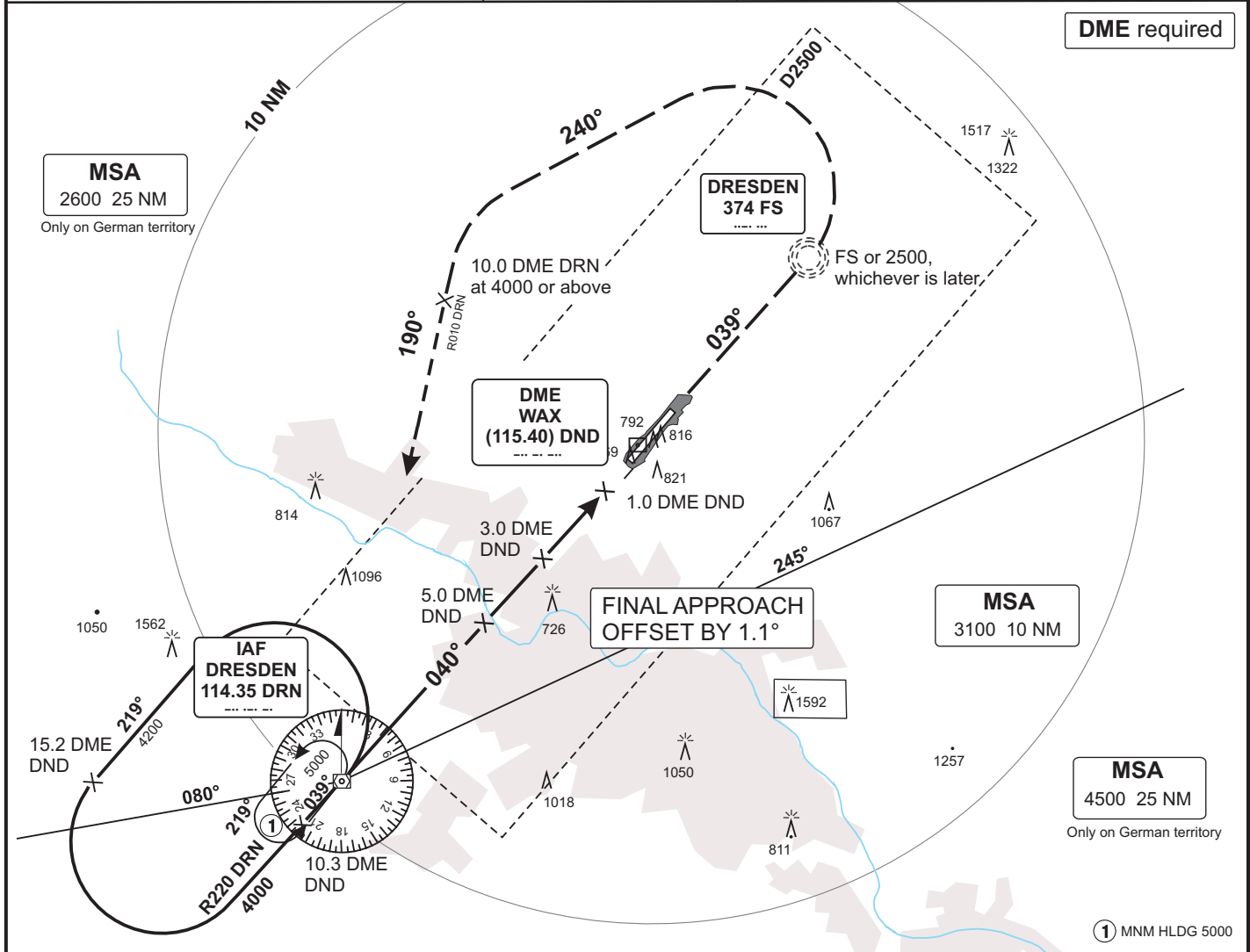
Revision: 2010-05-27. Changes: comm. frequencies.

OCA (OCH)	A	B	C	D	D _L
ILS CAT I	846 (146)	856 (156)	866 (166)	876 (176)	
ILS CAT II	757 (57)	773 (73)	787 (87)	800 (100)	
LOC-DME	1230 (530)	1230 (530)	1230 (530)	1230 (530)	
CIRCLING	1230	1250	1460	1460	

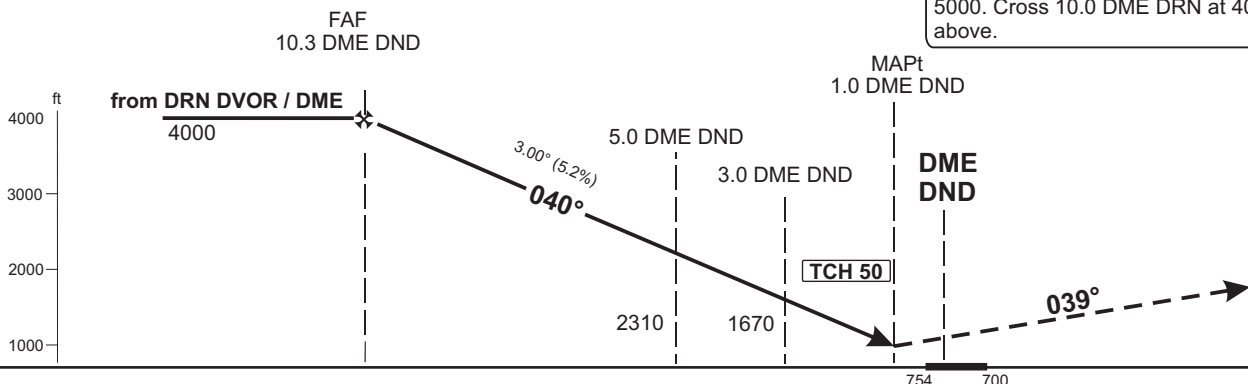
DME DND	2	3	4	5	6	7	8	
DIST THR	0.9	1.9	2.9	3.9	4.9	5.9	6.9	
ALTITUDE	1040	1360	1680	2000	2320	2630	2950	
LOC - DME: Timing not authorized for defining the MAPt.								
GS	kt	80	100	120	140	160	180	
5.2 DME DND - THR (4.1 NM)	MIN:SEC	3:05	2:28	2:03	1:45	1:32	1:22	
Rate of descent (5.2%)	ft/MIN	420	530	640	740	850	960	

CAT IIIA & CAT IIIB (MNM RVR 75 m) approved.

MÜNCHEN RADAR	125.620	126.170	TOWER	122.920	Mag. Variation	2° E		
	131.020	129.100		GROUND		121.970	Elevation	754'
				APRON		121.750	Transition altitude	5000'
				ATIS		118.870	Transition level	by ATC



Missed Approach Procedure
On track 039° to FS NDB or 2500, whichever is later, LT, on track 240° to intercept R010 DRN to DRN DVOR/DME, climbing to 5000. Cross 10.0 DME DRN at 4000 or above.



OCA (OCH)	A	B	C	D
VOR-DME	1200 (440)	1200 (440)	1200 (440)	1200 (440)
CIRCLING	1230	1250	1460	1460

DME DND	10	9	8	7	6	5	4	3	2
DIST THR	9.7	8.7	7.7	6.7	5.7	4.7	3.7	2.7	1.7
ALTITUDE	3900	3580	3260	2940	2620	2310	1990	1670	1350

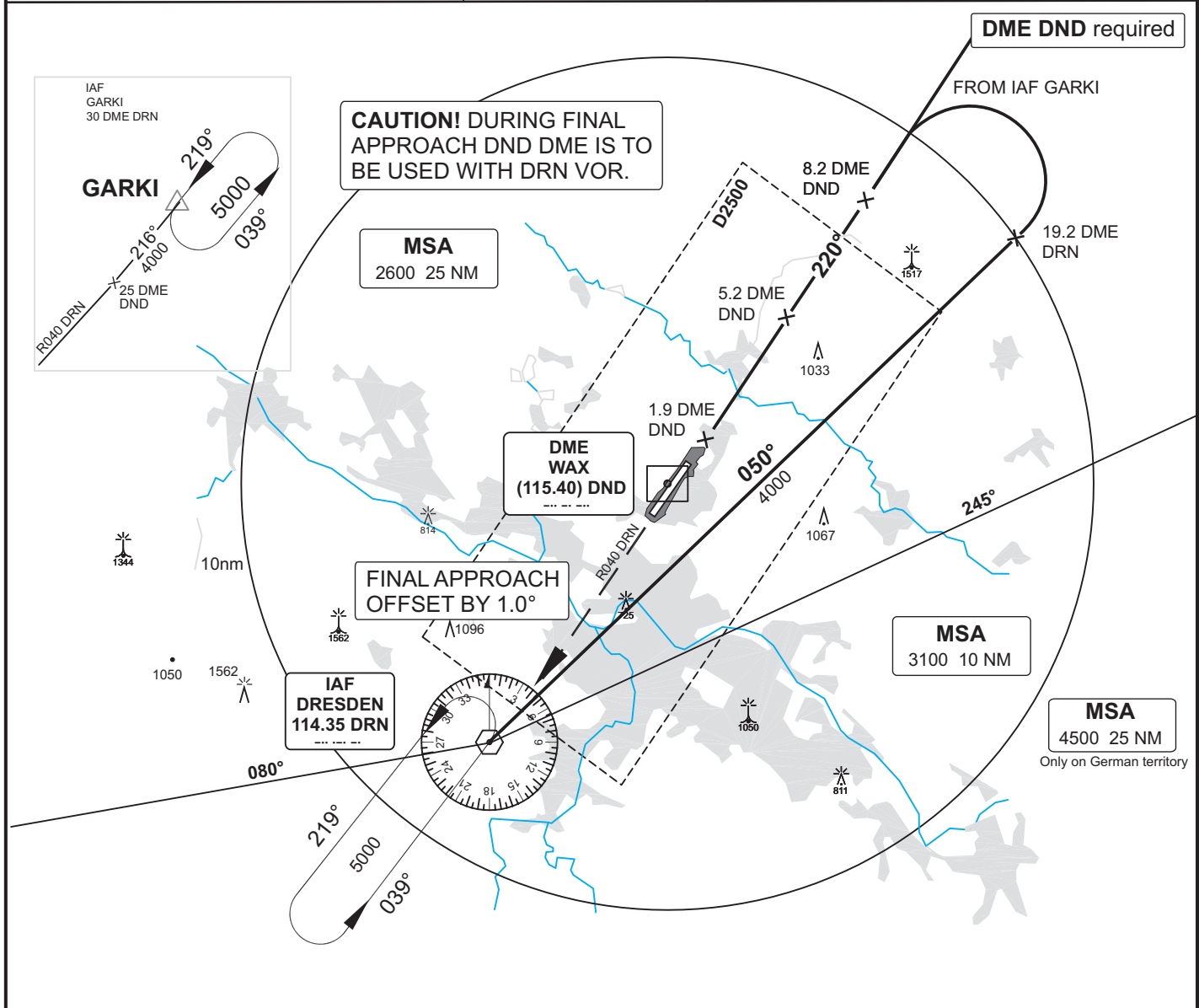
Timing not authorized for defining the MAPt.

GS	kt	80	100	120	140	160	180
3.0 DME DND-1.0 DME DND (2.0 NM)	MIN:SEC	1:30	1:12	1:00	0:51	0:45	0:40
Rate of descent (5.2%)	ft/MIN	420	530	640	740	850	960

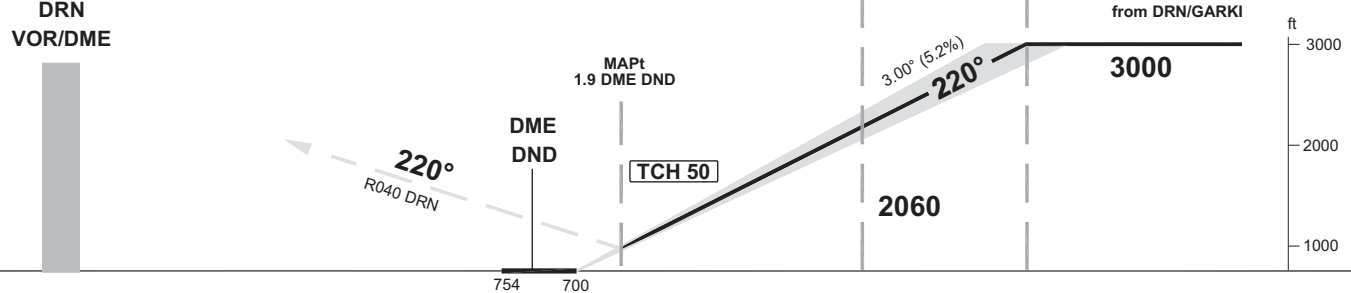
Revision: 2010-05-27. Changes: comm. frequencies.

Valid for flight simulation use only - do not use for real life navigation

MÜNCHEN RADAR	125.620 126.170	TOWER	122.920	Mag. Variation	2° E		
	131.020 129.100		GROUND		121.970	Elevation	754'
			APRON		121.750	Transition altitude	5000'
			ATIS		118.870	Transition level	by ATC



Missed Approach Procedure
On R040 DRN to DRN DVOR/DME climbing to 5000.



OCA (OCH)	A	B	C	D	
VOR-DME	1280 (580)	1280 (580)	1280 (580)	1280 (580)	
CIRCLING	1230	1250	1460	1460	

DME DND	3	4	5	6	7	8	
DIST THR	1.9	2.9	3.9	4.9	5.9	6.9	
ALTITUDE	1360	1680	2000	2320	2630	2950	
LOC - DME: Timing not authorized for defining the MAPt.							
GS	kt	80	100	120	140	160	180
5.2 DME DND - MAPt (3.3 NM)	MIN:SEC	2:29	1:59	1:39	1:25	1:14	1:06
Rate of descent (5.2%)	ft/MIN	420	530	640	740	850	960

Revision: 2010-05-27. Changes: comm. frequencies; OCA(H) values; obstacles.

Valid for flight simulation use only - do not use for real life navigation