

Bremen Radar
124.170 123.220 125.020

Heringsdorf Tower
132.820

Transition alt. 5000'
Airport elev. 93'
Threshold elev. 89'

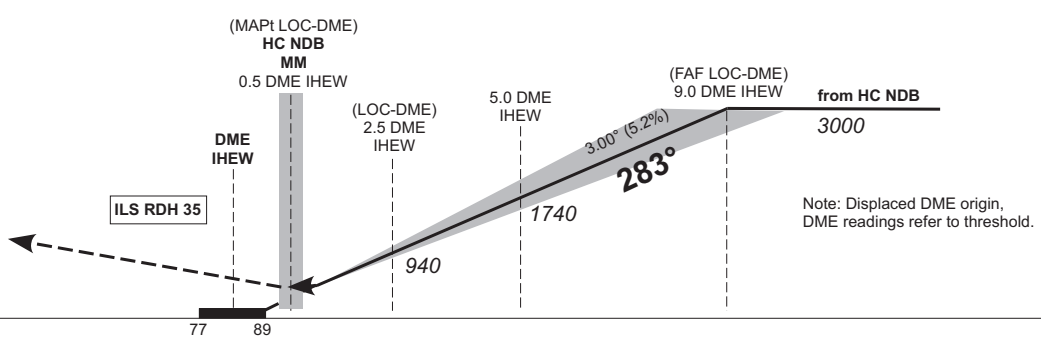
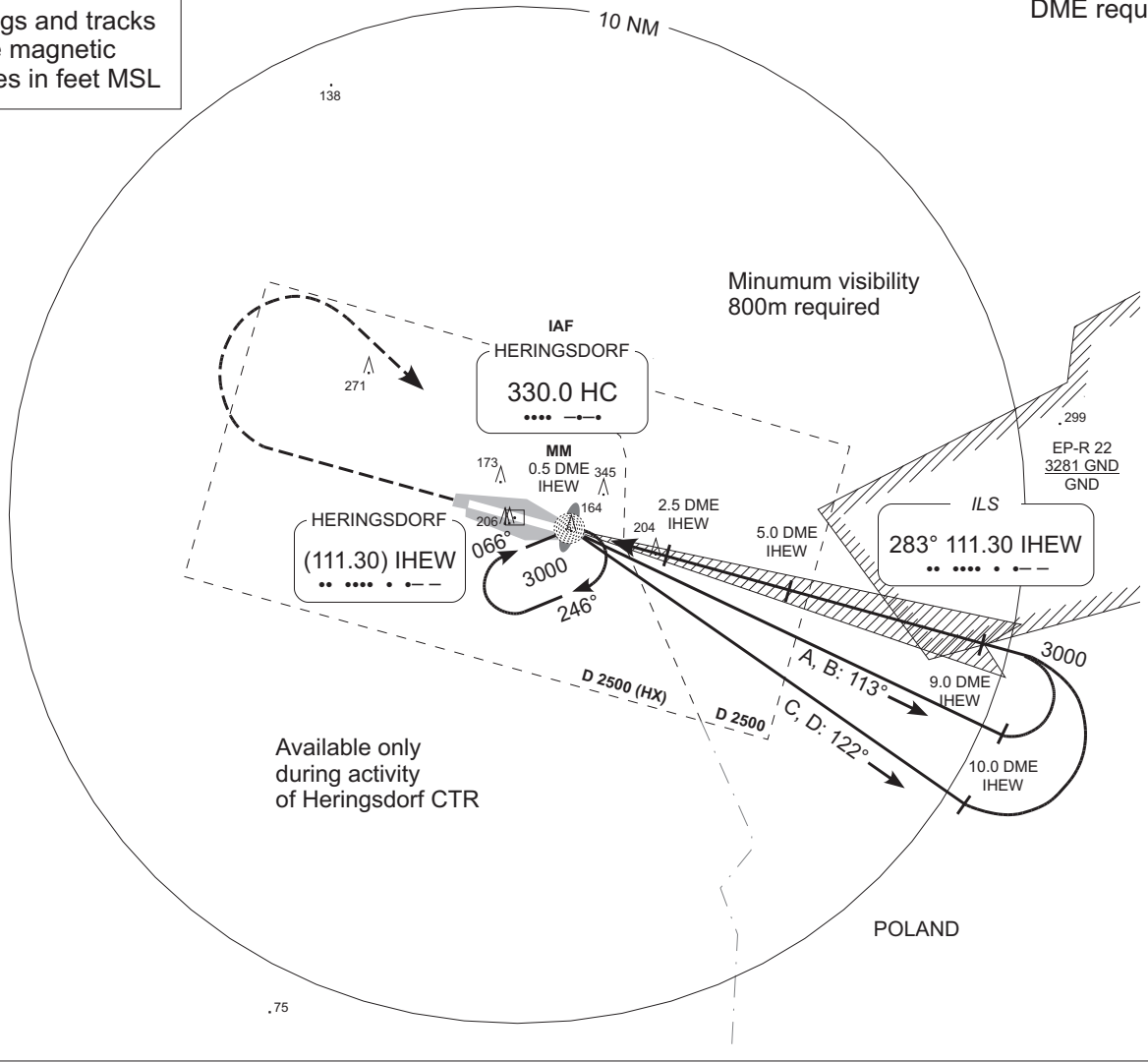
1800'
25 NM

MSA HC NDB
German territory only

**MISSED APCH: Climb straight ahead to 1500'
RT to HC NDB climbing to 3000'.**

DME required

Bearings and tracks
are magnetic
Altitudes in feet MSL



OCA (OCH)	A	B	C	D
ILS CAT I	296 (207)	306 (217)	316 (227)	326 (237)
LOC-DME	450 (370)			
CIRCLING*	640	740	790	

* South of aerodrome only.

DME IHEW	1	2	3	4	5	6	7	8
DIST THR	1	2	3	4	5	6	7	8
ALTITUDE	460	780	1100	1420	1740	2060	2380	2690

LOC-DME: Timing not authorized for defining the MAPt.

GS	kt	80	100	120	140	160	180
5.0 DME IHEW – THR (5.0 NM)	MIN:SEC	3:45	3:00	2:30	2:09	1:53	1:40

Revision: 2010-06-14. Changes: comm. frequencies.

Valid for flight simulation use only - do not use for real life navigation

Bremen Radar
124.170 123.220 125.020

Heringsdorf Tower
132.820

Transition alt. 5000'
Airport elev. 93'
Threshold elev. 77'

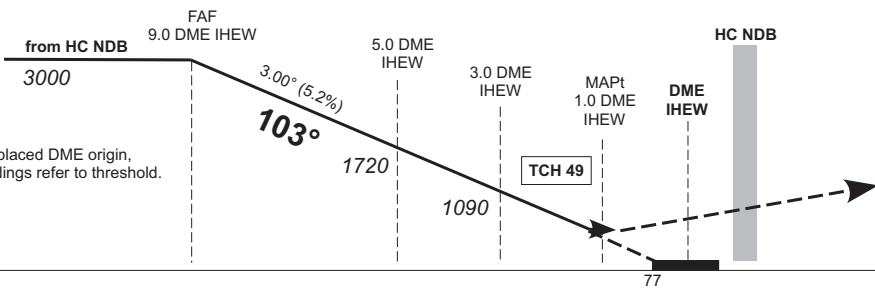
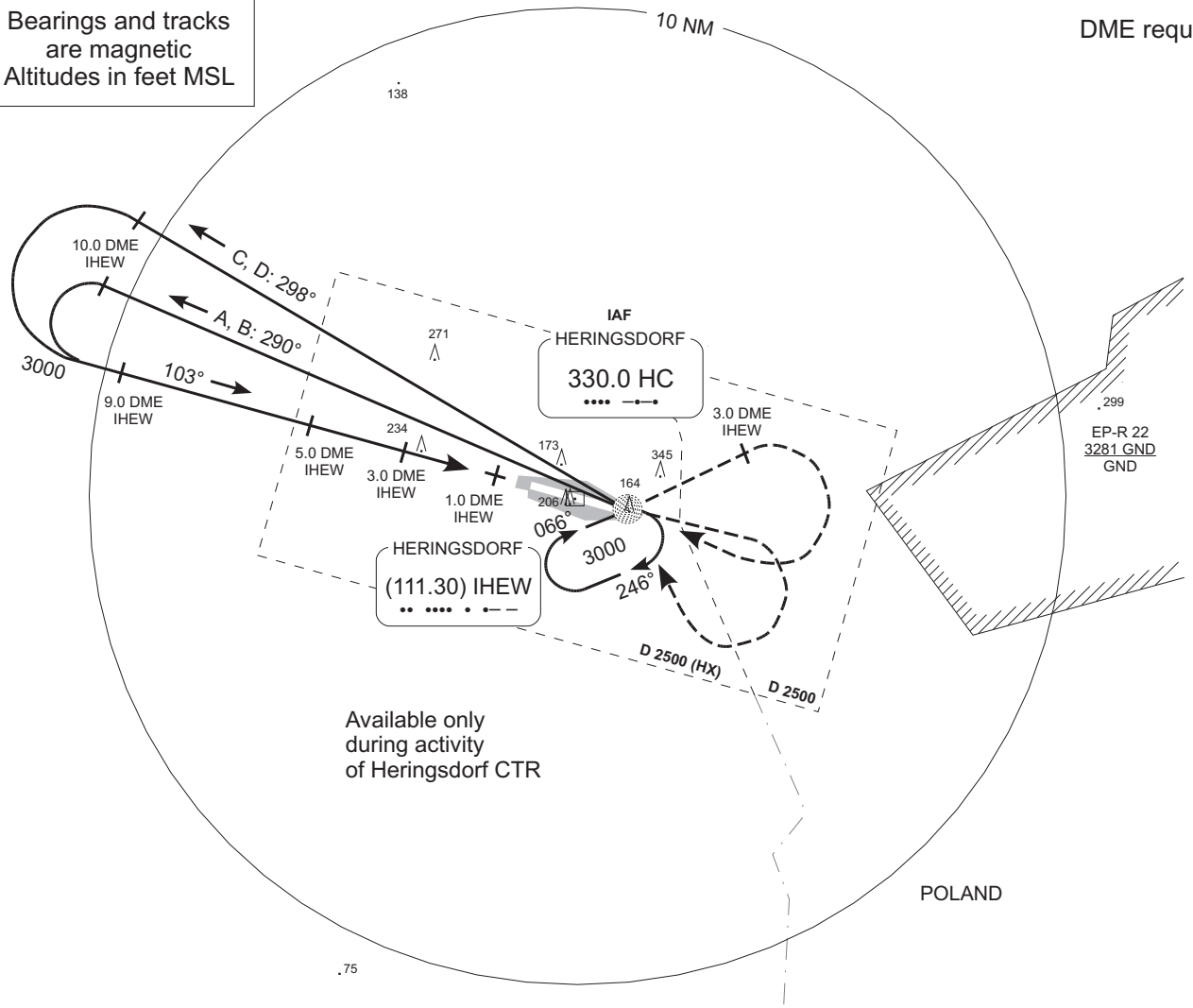
1800'
25 NM

MSA HC NDB
German territory
only

**MISSED APCH: Climb straight ahead to 1500'
RT to HC NDB climbing to 3000'.**

DME required

Bearings and tracks
are magnetic
Altitudes in feet MSL



OCA (OCH)	A	B	C	D
NDB-DME	480 (410)			

DME IHEW	9	8	7	6	5	4	3	2
DIST THR	9	8	7	6	5	4	3	2
ALTITUDE	3000	2680	2360	2040	1720	1400	1090	770

Timing not authorized for defining the MAPt.

GS	kt	80	100	120	140	160	180
5.0 DME IHEW – 1.0 DME IHEW (4.0 NM)	MIN:SEC	3:00	2:24	2:00	1:43	1:30	1:20

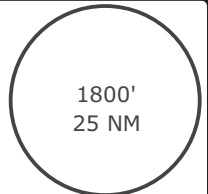
Revision: 2010-06-14. Changes: comm. frequencies.

Valid for flight simulation use only - do not use for real life navigation

Bremen Radar
124.170 123.220 125.020

Heringsdorf Tower
132.820

Transition alt. 5000'
Airport elev. 93'
Threshold elev. 89'

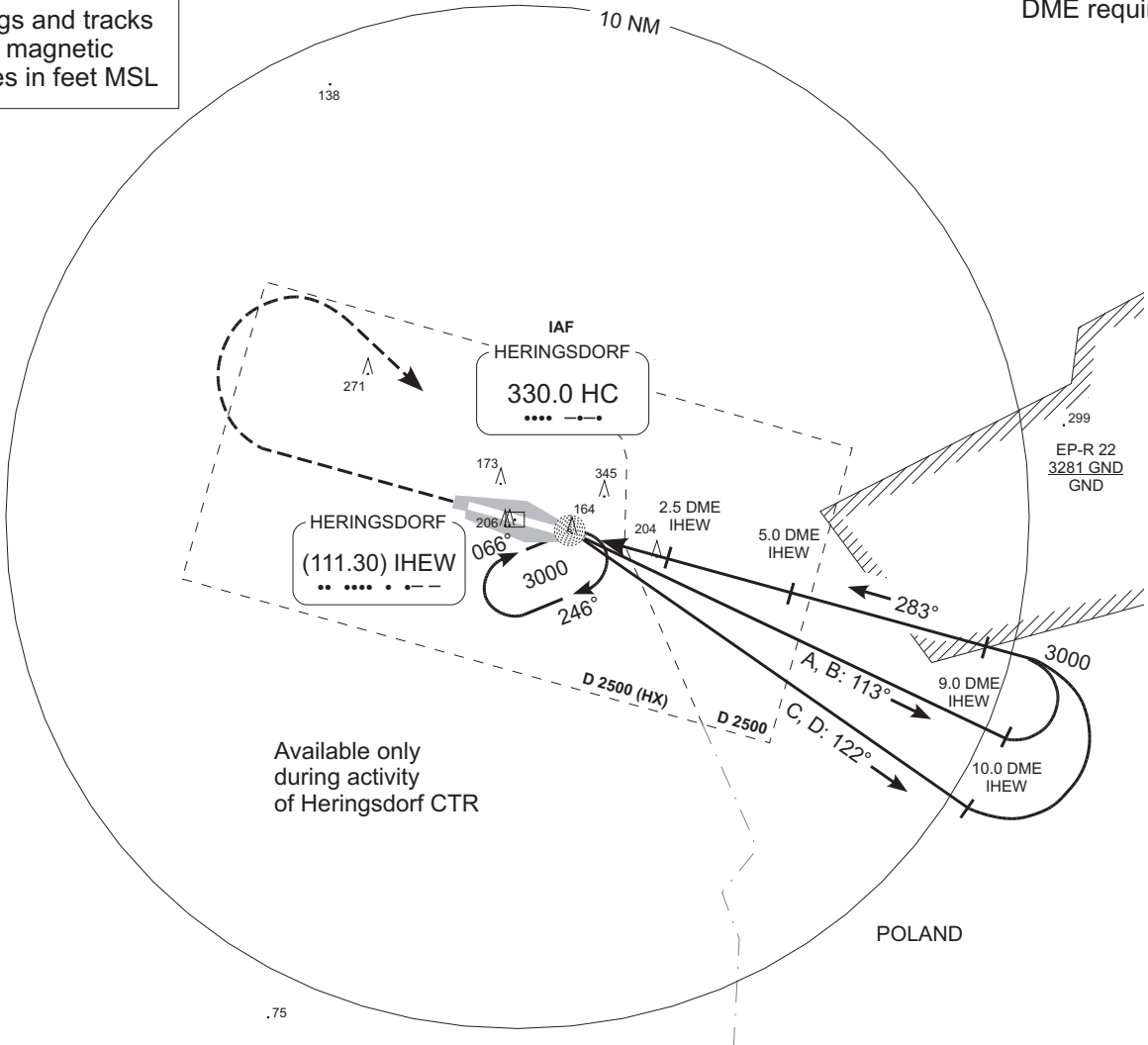


MSA HC NDB
German territory only

**MISSED APCH: Climb straight ahead to 1500'
RT to HC NDB climbing to 3000'.**

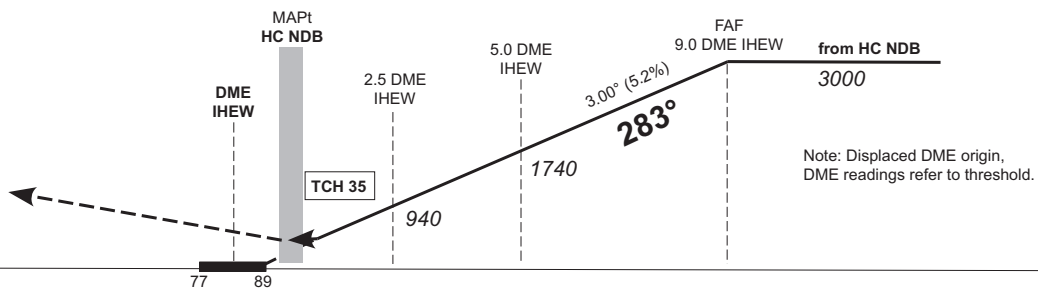
DME required

Bearings and tracks
are magnetic
Altitudes in feet MSL



Available only
during activity
of Heringsdorf CTR

POLAND



Note: Displaced DME origin,
DME readings refer to threshold.

OCA (OCH)	A	B	C	D
NDB-DME	510 (420)			
CIRCLING*	640	740	790	

* South of aerodrome only.

DME IHEW	2	3	4	5	6	7	8
DIST THR	2	3	4	5	6	7	8
ALTITUDE	780	1100	1420	1740	2060	2380	2690

Timing not authorized for defining the MAPt.

GS	kt	80	100	120	140	160	180
5.0 DME IHEW – HC NDB (4.5 NM)	MIN:SEC	3:23	2:42	2:15	1:56	1:41	1:30