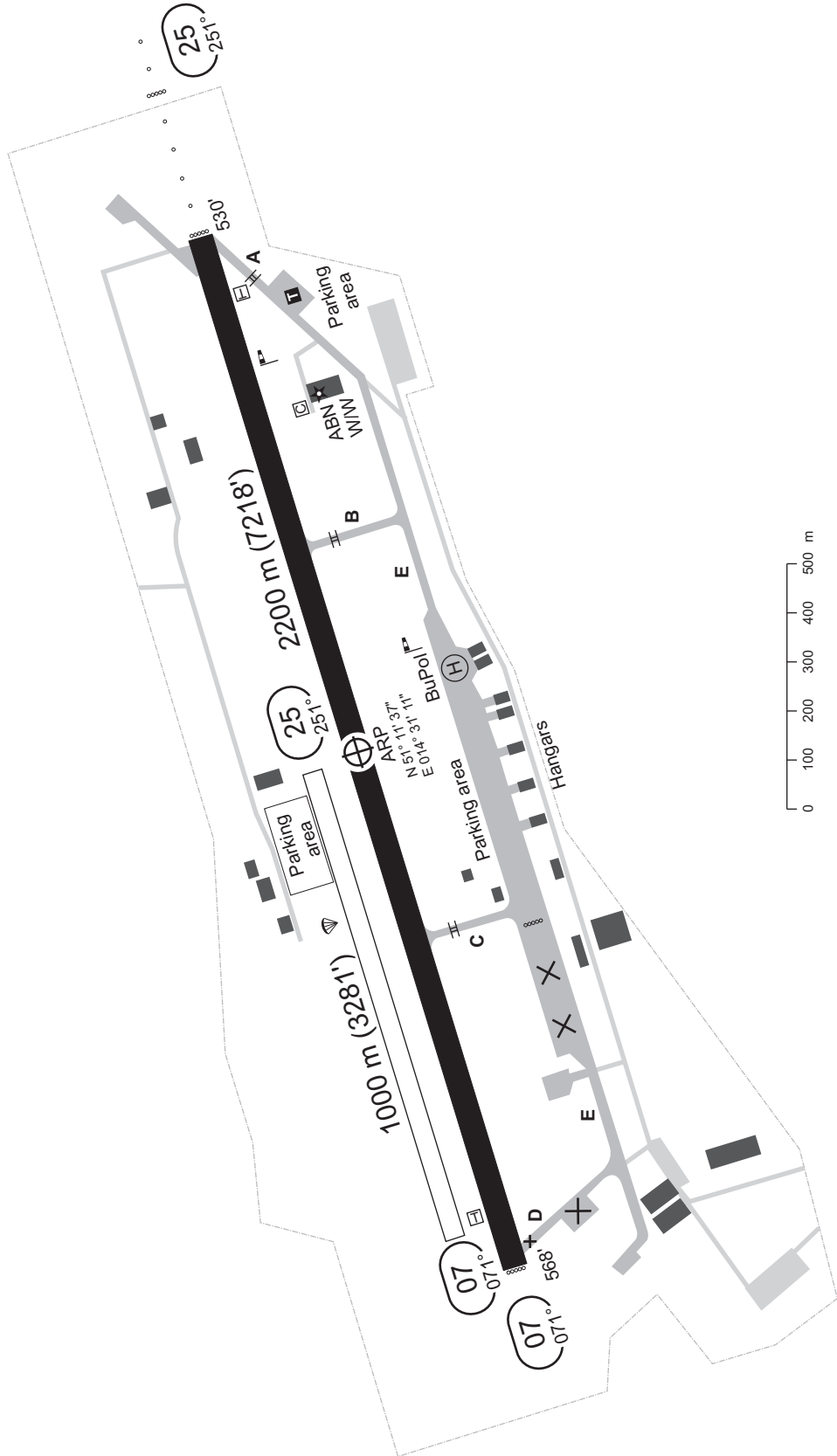


BAUTZEN INFO	120.600	MÜNCHEN RADAR	125.620	126.170
			131.020	129.100
			Mag. Variation	2° E
			Elevation	568'
			Transition altitude	5000'
			Transition level	by ATC

RWY	Dimensions (m)	Surface	Strength	TORA/TODA/ASDA/LDA (m)
07	2200 x 50	CONC	PCN 44 R/B/W/T	2200
25	1000 x 40	Gras	5700 kg MPW	1000



Revision: 2010-05-21. Changes: comm. frequencies; heliport removed.

MÜNCHEN RADAR	125.620 126.170 131.020 129.100	INFO	120.600	Mag. Variation	2° E	MSA 25 NM from ARP* 3700 N 51° 11' 37" E 014° 31' 11"
				Elevation	568'	
				Transition altitude	5000'	
				Transition level	by ATC	

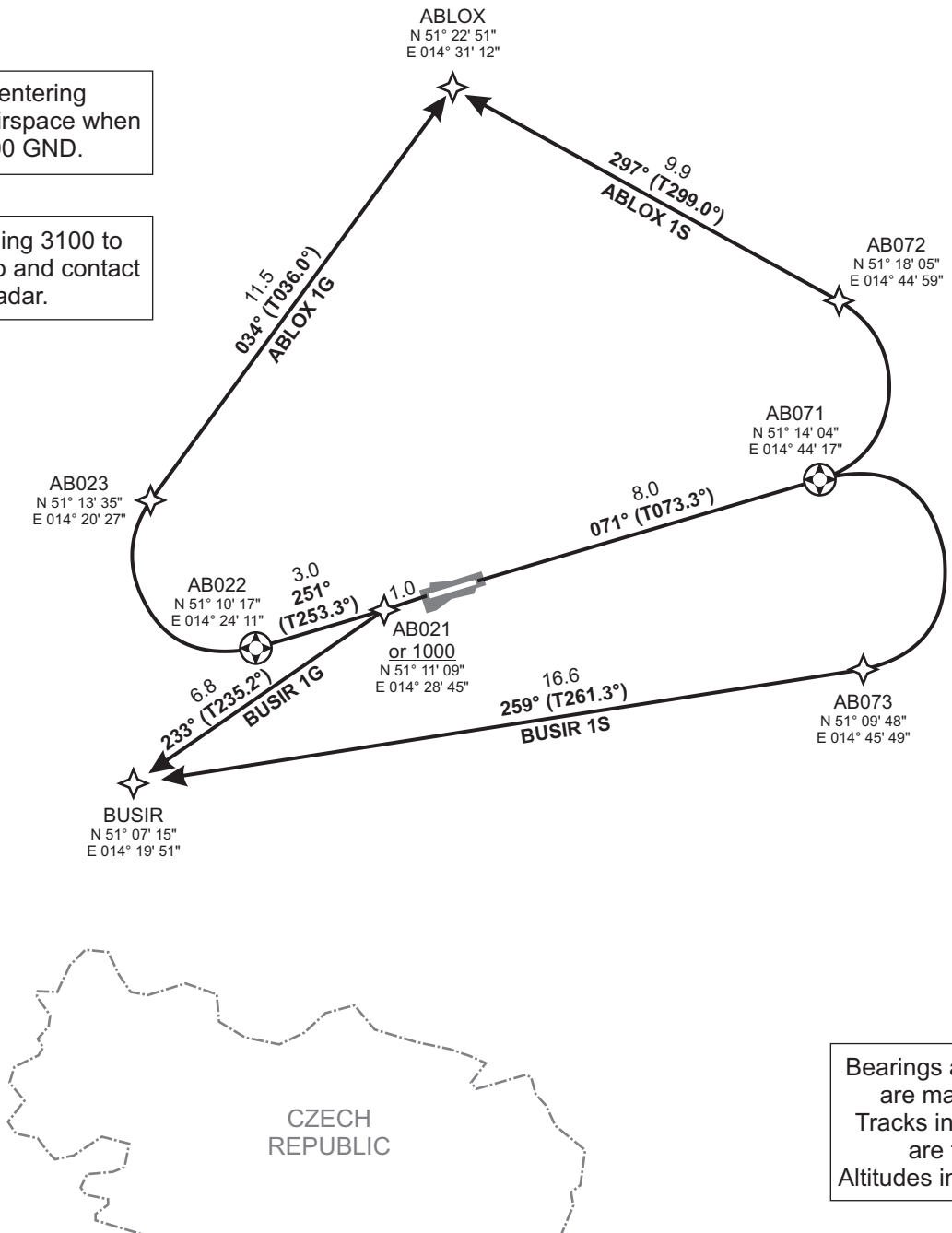
ABLOX ONE GOLF (ABLOX 1G)
ABLOX ONE SIERRA (ABLOX 1S)
BUSIR ONE GOLF (BUSIR 1G)
BUSIR ONE SIERRA (BUSIR 1S)
RWY 07/25 DEPARTURES

Initial climb clearance **5000**

* German territory only

Departures entering controlled airspace when passing 2500 GND.

Report passing 3100 to Bautzen Info and contact München Radar.



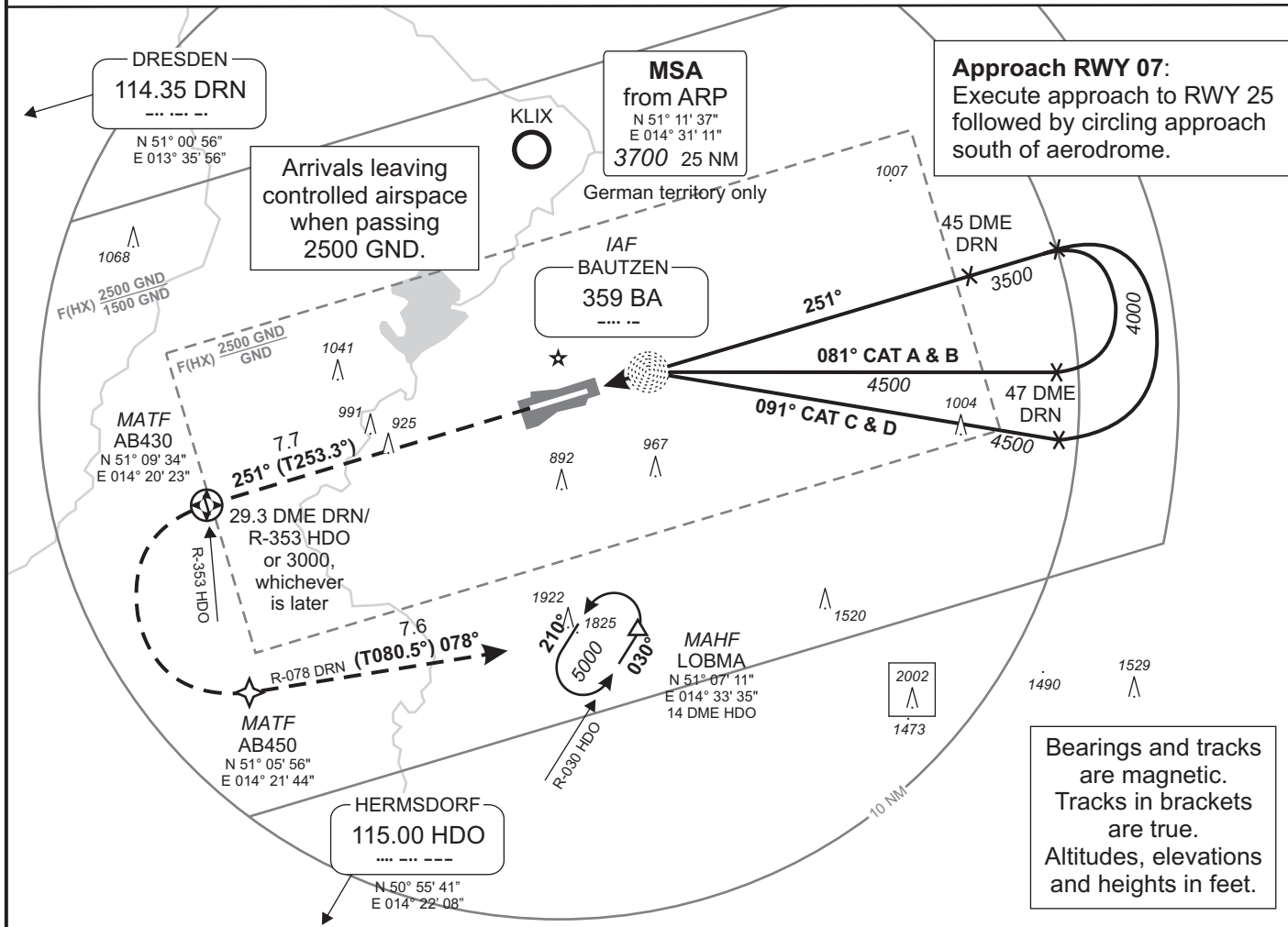
Valid for flight simulation use only - do not use for real life navigation

SID	RWY	Routing	Remarks
ABLOX 1G	25	Climb on track 251° to AB022; RT, via AB023 on track 034° to ABLOX. GPS/FMS RNAV: [A1000+] - <u>AB022</u> [R] - AB023 - ABLOX.	Only for flights to EDDB and EDDT.
ABLOX 1S	07	Climb on track 071° to AB071; LT, via AB072 on track 297° to ABLOX. GPS/FMS RNAV: [A1000+] - <u>AB071</u> [L] - AB072 - ABLOX.	
BUSIR 1G	25	Climb on track 251° to AB021 or 1000, whichever is later; LT, on track 233° to BUSIR. GPS/FMS RNAV: [A1000+] - AB021[A1000+; L] - BUSIR.	
BUSIR 1S	07	Climb on track 071° to AB071; RT, via AB073 on track 259° to BUSIR. GPS/FMS RNAV: [A1000+] - <u>AB071</u> [R] - AB073 - BUSIR.	

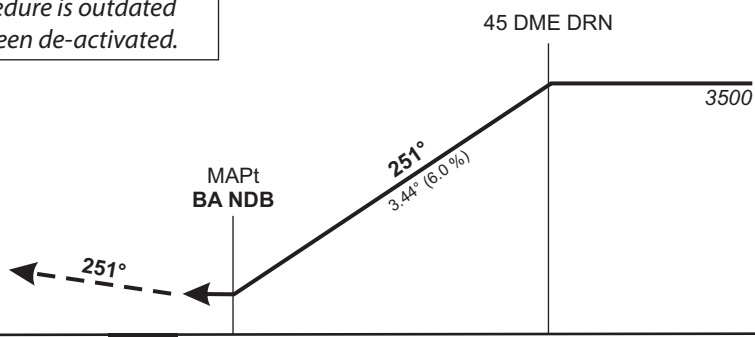
Revision: 2010-05-21. Changes: comm. frequencies.

MÜNCHEN RADAR	125.620 126.170 131.020 129.100	INFO	120.600	Mag. Variation	2° E
				Elevation	568'
				Transition altitude	5000'
				Transition level	by ATC

Missed approach procedure **NON-RNAV:** Climb straight ahead to 5000'; when passing 3000' or R-353 HDO/39 DME DRN, whichever is later, LT to intercept R-078 DRN to LOBMA.
RNAV (GPS): Climb on track 251° to 5000'; when passing 3000' or AB430, whichever is later, LT, via AB450 on track 078° to LOBMA.
AB430 [A3000+; L] - AB450 - LOBMA [A5000]



Note that this procedure is outdated since BA NDB has been de-activated.



OCA (OCH)	A	B	C	D	
NDB-DME	950 (420)	950 (420)	950 (420)	950 (420)	
CIRCLING*	1190	1270	2320	2320	

DRN DME	38	39	40	41	42	43	44	45
ALTITUDE	950	1310	1680	2040	2410	2770	3130	3500

GS	kts	80	100	120	140	160	180
Rate of descent (6.0 %)	ft / MIN	490	610	730	850	970	1090

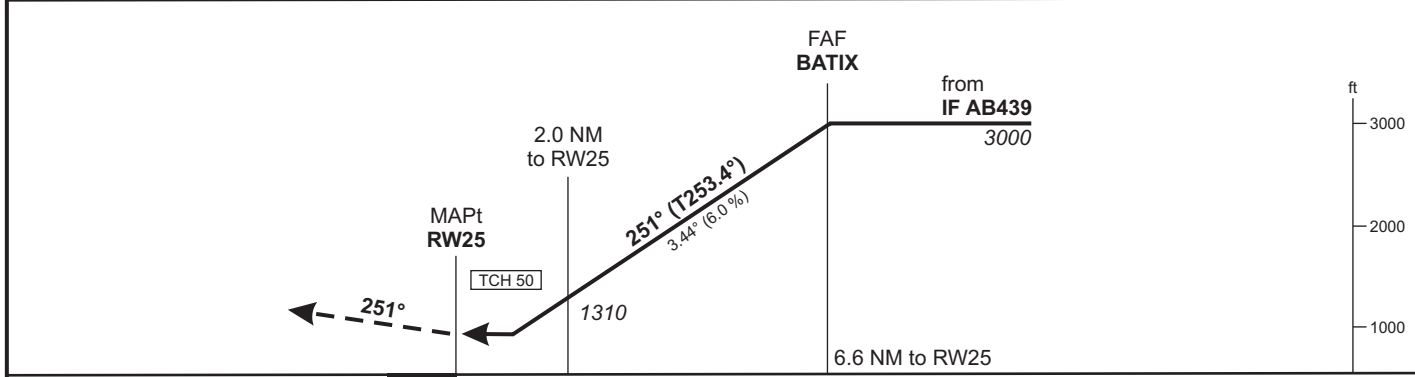
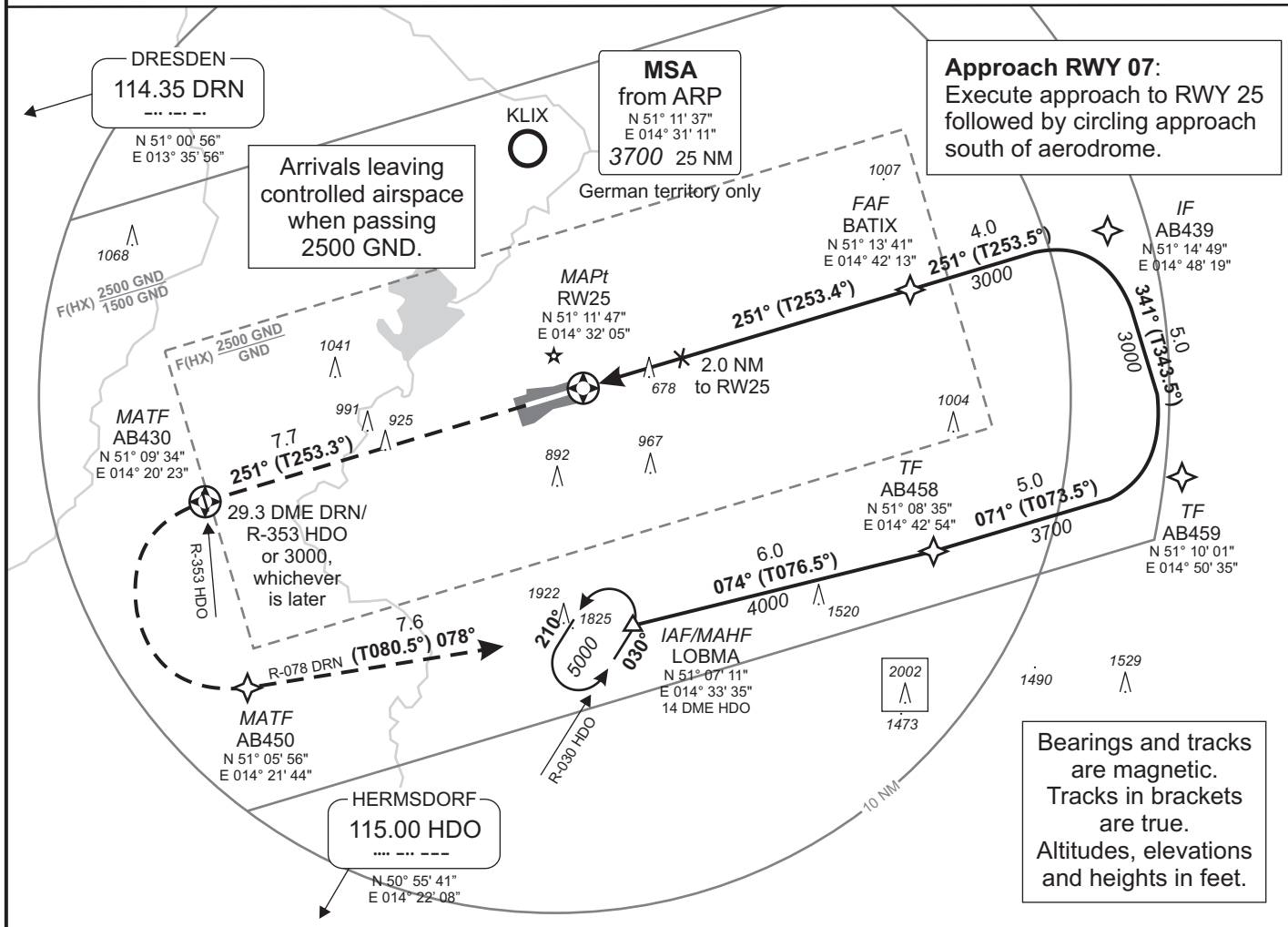
* South of aerodrome only.

Revision: 2010-05-21. Changes: initial revision.

Valid for flight simulation use only - do not use for real life navigation

MÜNCHEN RADAR	125.620 126.170 131.020 129.100	INFO	120.600	Mag. Variation	2° E
				Elevation	568'
				Transition altitude	5000'
				Transition level	by ATC

Missed approach procedure **NON-RNAV:** Climb straight ahead to 5000'; when passing 3000' or R-353 HDO/39 DME DRN, whichever is later, LT to intercept R-078 DRN to LOBMA.
RNAV (GPS): Climb on track 251° to 5000'; when passing 3000' or AB430, whichever is later, LT, via AB450 on track 078° to LOBMA.
AB430 [A3000+; L] - AB450 - LOBMA [A5000]



OCA (OCH)	A	B	C		
GPS	930 (400)	930 (400)	930 (400)		
CIRCLING*	1190	1270	2320		

DIST THR / RW25	1	2	3	4	5	6		
ALTITUDE	950	1310	1680	2040	2410	2770		

Timing not authorized for defining the MAPt.

GS	kts	80	100	120	140	160	180
BATIX-RW25 (6.6 NM)	MIN:SEC	4:59	3:59	3:19	2:51	2:29	2:13
Rate of descent (6.0 %)	ft / MIN	490	610	730	850	970	1090

* South of aerodrome only.

Revision: 2010-05-21. Changes: comm. frequencies.

Valid for flight simulation use only - do not use for real life navigation