

VATSIM Germany Instrument Approach Chart

Berlin Brandenburg EDDB

Elevation: 157

ATIS 124.950

Director (North) 121.120

Bremen Radar (North) 119.620

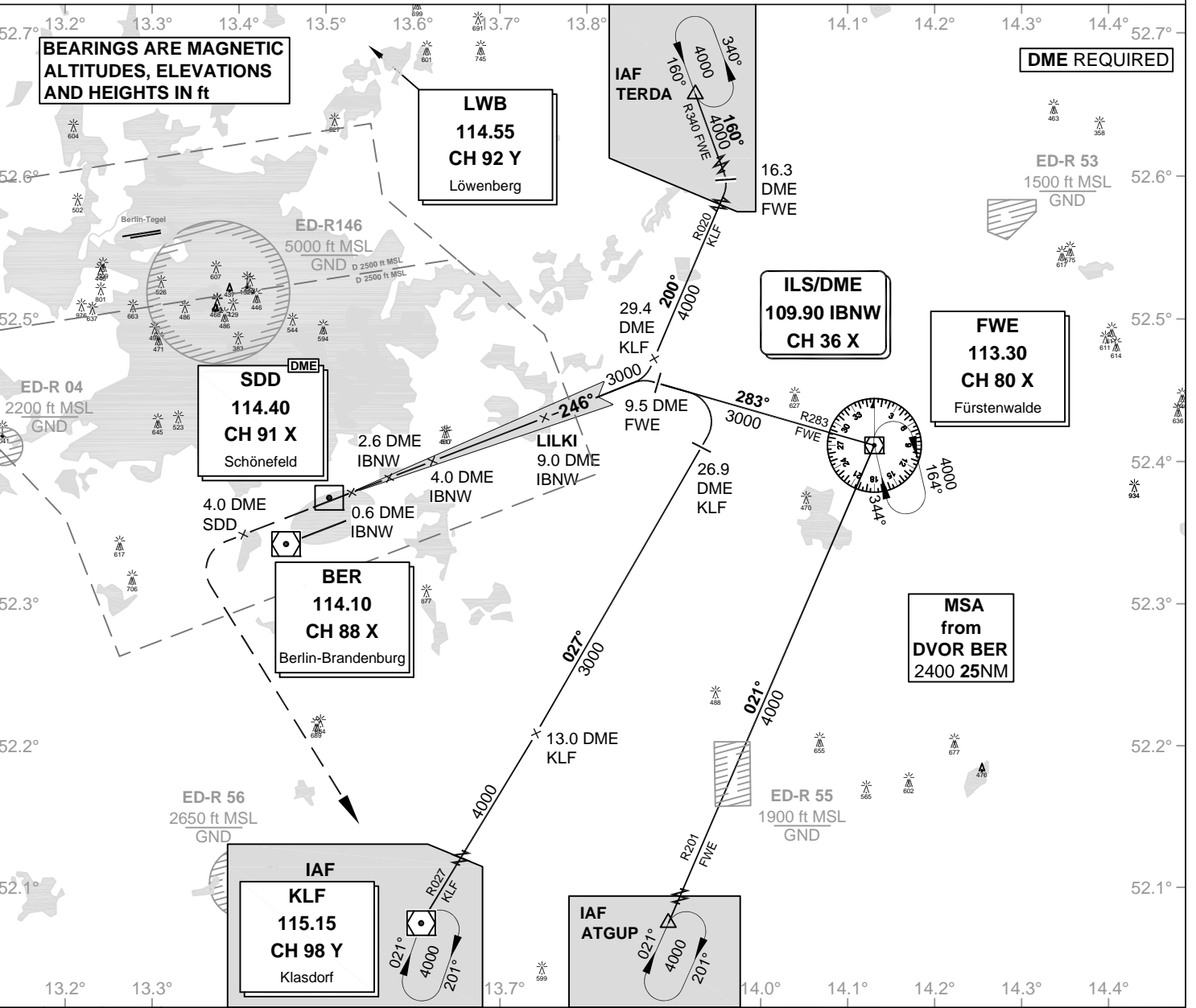
Director (South) 119.500

Bremen Radar (South) 126.420

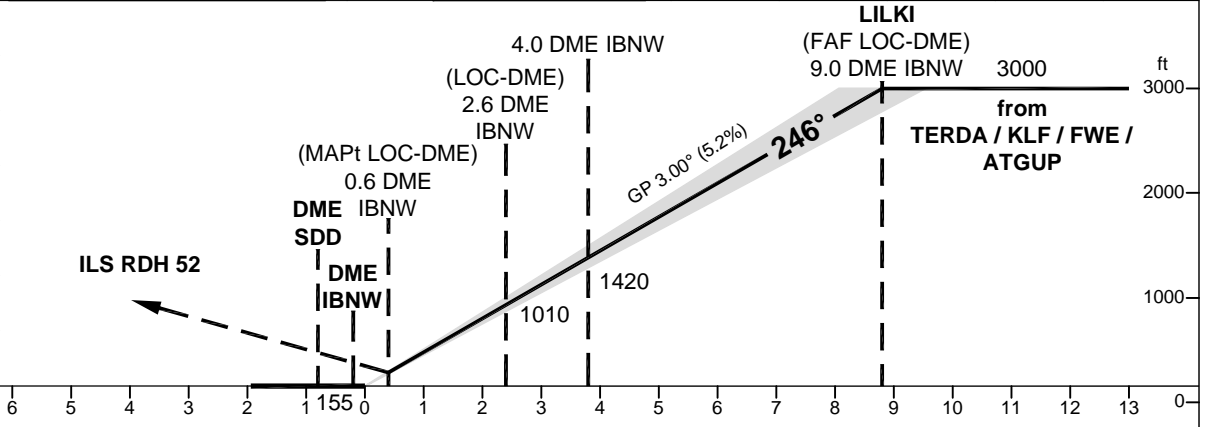
Tower (North) 120.020

Tower (South) 118.800

ILS CAT II & III or LOC RWY 25R



OCA (OCH)	ILS CAT I	ILS CAT II	LOC DME
CAT A	299 (144)	211 (56)	540 (390)
CAT B	309 (154)	227 (72)	540 (390)
CAT C	319 (164)	240 (85)	540 (390)
CAT D	329 (174)	253 (98)	540 (390)
CAT DL	329 (174)	253 (98)	
Large Aircraft			



MISSED APPROACH: On runway track, climb to MAX. 3000; at 4.0 DME West of SDD continue climb to 4000 and LT to KLF DVOR.

DME IBNW	2	3	4	5	6	7	8
DIST THR	1.8	2.8	3.8	4.8	5.8	6.8	7.8
ALTITUDE	790	1100	1420	1740	2060	2380	2700

GS	kt	80	100	120	140	160	180
4.0 DME IBNW - THR (3.8 NM)	MIN:SEC	2:51	2:17	1:54	1:38	1:26	1:16
Rate of descent (5.2%)	ft / MIN	420	530	640	740	850	960

CAT IIIA AND CAT IIIB (MNM RWY 125m) APPROVED.

LOC-DME: Timing not authorized for defining the MAPt

VATSIM Germany Instrument Approach Chart

Berlin Brandenburg EDDB

Elevation: 157

ATIS 124.950 Director (North) 121.120

Director (South) 119.500

Bremen Radar (North) 119.620

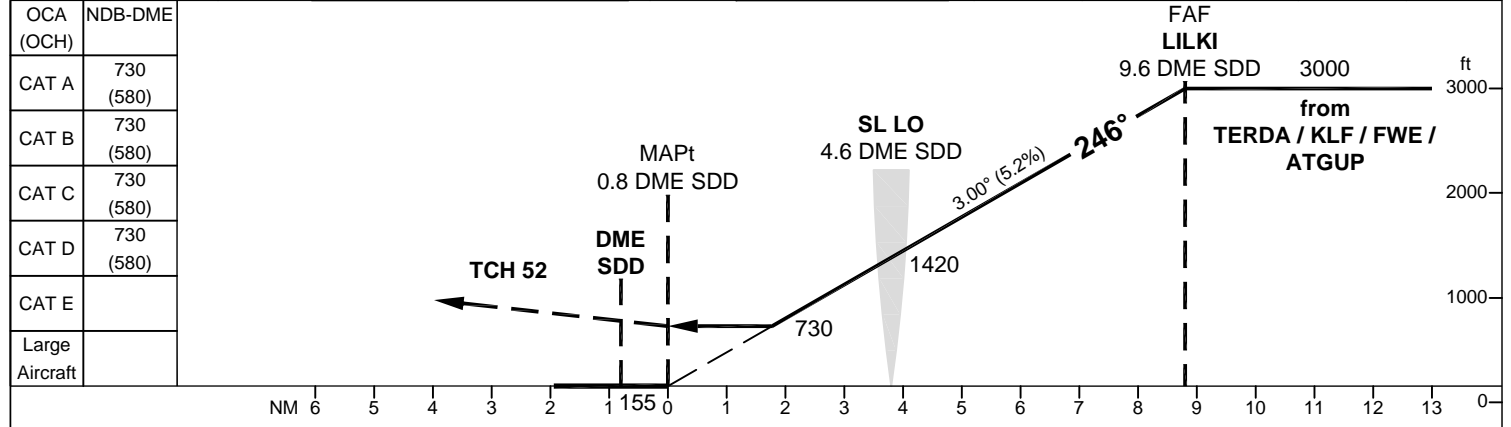
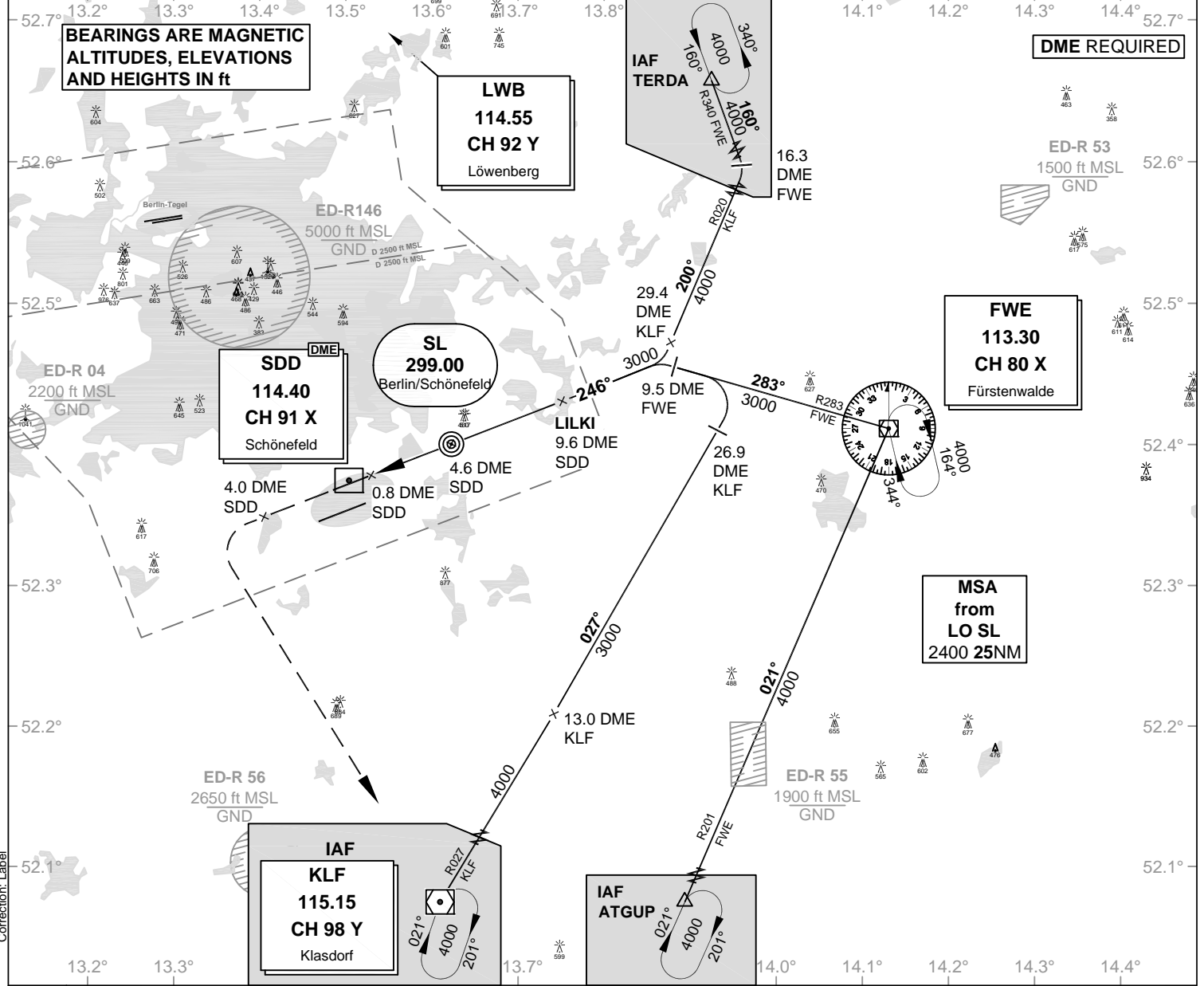
Tower (North) 120.020

Bremen Radar (South) 126.420

Tower (South) 118.800

VAR: 3° E

NDB RWY 25R



MISSED APPROACH: On runway track, climb to MAX. 3000; at 4.0 DME West of SDD continue climb to 4000 and LT to KLF DVOR.

DME SDD	2	3	4	5	6	7	8	9	GS	kt	80	100	120	140	160	180
DIST THR	1.2	2.2	3.2	4.2	5.2	6.2	7.2	8.2	SL LO - MAPt (3.8 NM)	MIN:SEC	2:51	2:17	1:54	1:38	1:26	1:16
ALTITUDE	590	910	1230	1550	1870	2190	2500	2820	Rate of descent (5.2%)	ft / MIN	420	530	640	740	850	960

LOC-DME: Timing not authorized for defining the MAPt