

# VATSIM Germany Instrument Approach Chart

# Berlin Brandenburg EDDB

Elevation: 157

ATIS 124.950

Director (North) 121.120

Bremen Radar (North) 119.620

Director (South) 119.500

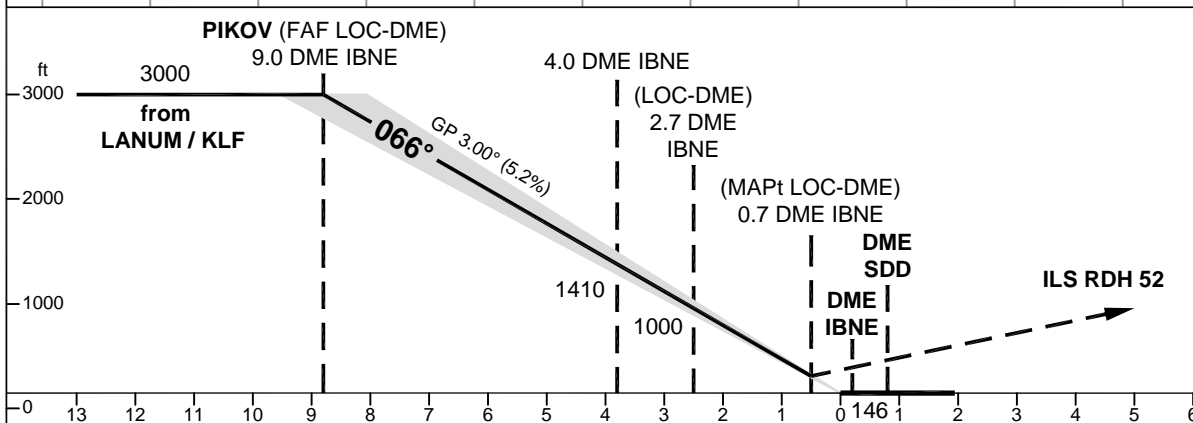
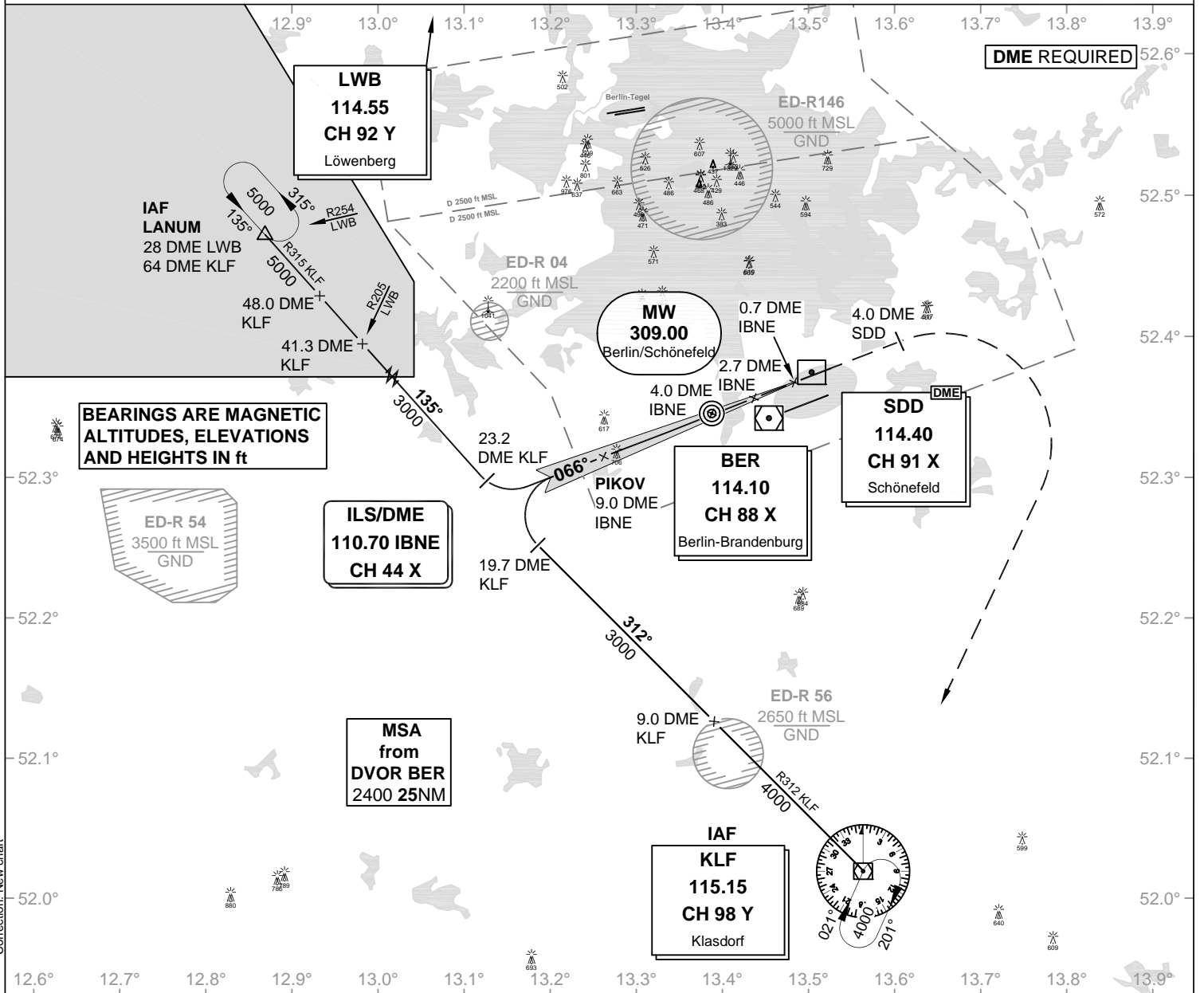
Bremen Radar (South) 126.420

Tower (North) 120.020

Tower (South) 118.800

## ILS CAT II & III or LOC RWY 07L

VAR: 3° E



OCA (OCH)	ILS CAT I	ILS CAT II	LOC DME
CAT A	284 (138)	196 (50)	530 (390)
CAT B	294 (148)	212 (66)	530 (390)
CAT C	304 (158)	225 (79)	530 (390)
CAT D	314 (168)	238 (92)	530 (390)
CAT DL	314 (168)	238 (92)	
Large Aircraft			

**MISSED APPROACH:** On runway track, climb to MAX. 3000; at 4.0 DME East of SDD continue climb to 4000 and RT to KLF DVOR.

DME IBNE	9	8	7	6	5	4	3	2		
DIST THR	8.8	7.8	6.8	5.8	4.8	3.8	2.8	1.8		
ALTITUDE	3000	2690	2370	2050	1730	1410	1090	780		

GS	kt	80	100	120	140	160	180
4.0 DME IBNE - THR (3.8 NM)	MIN:SEC	2:51	2:17	1:54	1:38	1:26	1:16
Rate of descent (5.2%)	ft / MIN	420	530	640	740	850	960

CAT IIIA AND CAT IIIB (MNM RWV 125m) APPROVED.

LOC-DME: Timing not authorized for defining the MAPt

# VATSIM Germany Instrument Approach Chart

## Berlin Brandenburg EDDB

Elevation: 157

ATIS 124.950

Director (North) 121.120

Bremen Radar (North) 119.620

Director (South) 119.500

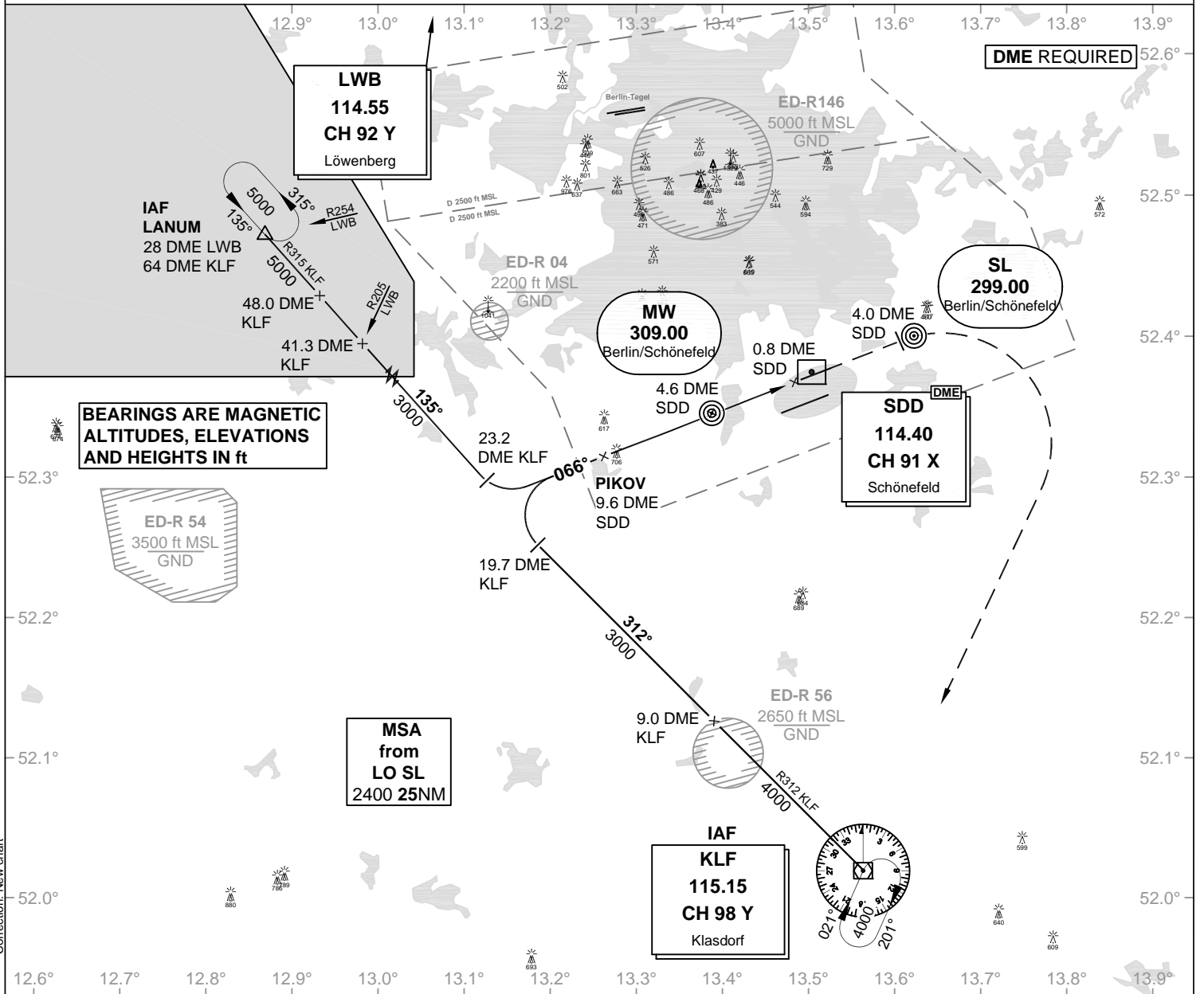
Bremen Radar (South) 126.420

Tower (North) 120.020

Tower (South) 118.800

VAR: 3° E

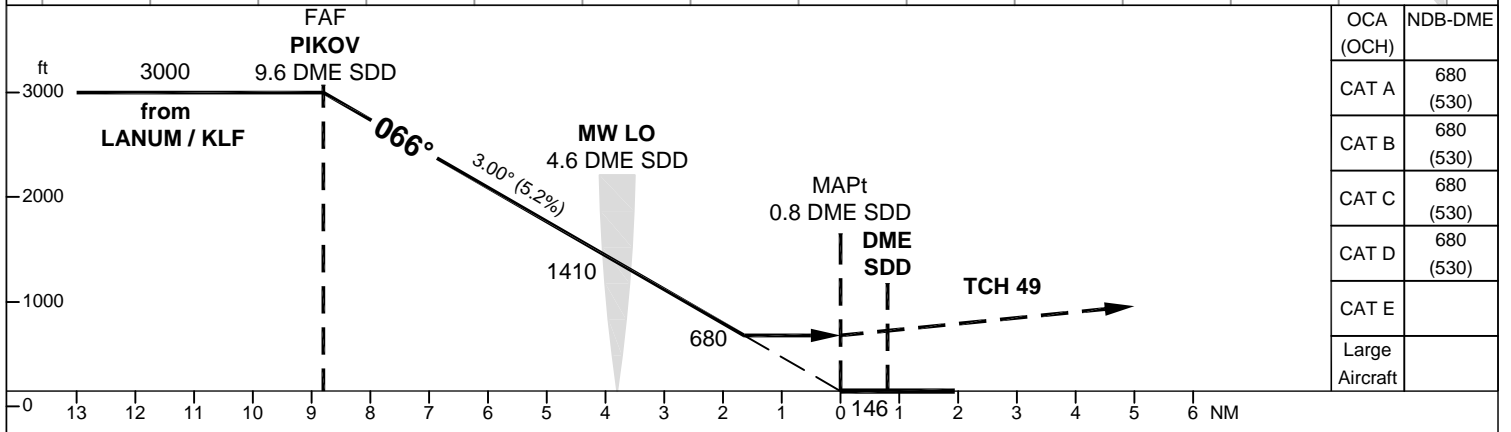
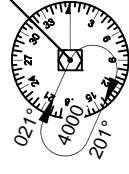
### NDB RWY 07L



BEARINGS ARE MAGNETIC  
ALTITUDES, ELEVATIONS  
AND HEIGHTS IN ft



MSA  
from  
LO SL  
2400 25NM



OCA (OCH)	NDB-DME
CAT A	680 (530)
CAT B	680 (530)
CAT C	680 (530)
CAT D	680 (530)
CAT E	
Large Aircraft	

**MISSED APPROACH:** On runway track, climb to MAX. 3000; at 4.0 DME East of SDD continue climb to 4000 and RT to KLF DVOR.

DME SDD	9	8	7	6	5	4	3		
DIST THR	8.2	7.2	6.2	5.2	4.2	3.2	2.2		
ALTITUDE	2810	2490	2170	1860	1540	1220	900		

GS	kt	80	100	120	140	160	180
MW LO - MAPt (3.8 NM)	MIN:SEC	2:51	2:17	1:54	1:38	1:26	1:16
Rate of descent (5.2%)	ft / MIN	420	530	640	740	850	960

LOC-DME: Timing not authorized for defining the MAPt