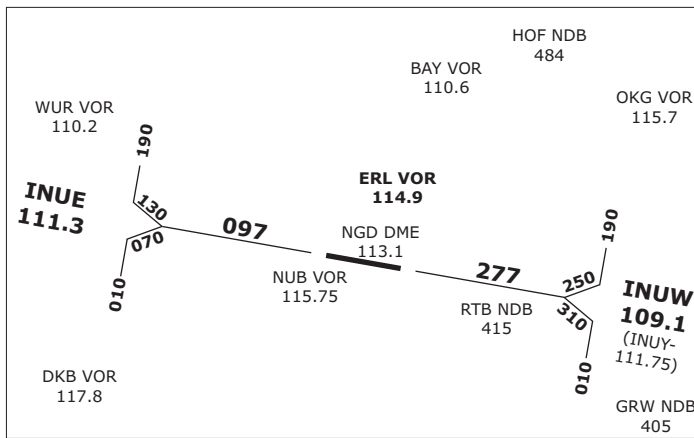
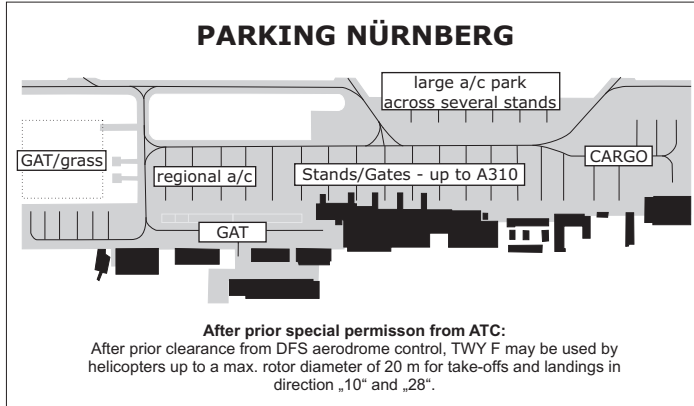


Valid for flight simulation use only - do not use for real life navigation



NÜRNBERG SIDS - INITIAL FL70			
FIX	RWY 28	RWY 10	REMARK
AKANU	7K	6M	-
DKB	4K	4M	-
ERETO	7K	5M	-
ERL	8K	9M	IFR Training f. Props
IBAGA	2K	2M	-
RODIS	3K	4M	-
SUKAD	2K	2M	-
SULUS	3K	3M	-



BAYREUTH (EDQD) SIDS			
FIX	RWY 06	RWY 24	INITAL
ABERU	2R	2G	5000 ft
ANELA	2R	2G	5000 ft
KULOK	2R	2G	5000 ft
LONLI	2R	2G	5000 ft
PIVIR	2R	2G	5000 ft

COBURG (EDQC) SIDS			
FIX	RWY 12	RWY 30	INITAL
LASGA	3E	1W	5000 ft
LONLI	3E	3W	5000 ft

HOF/PLAUEN (EDQM) SIDS			
FIX	RWY 08	RWY 26	INITAL
ABERU	5R	5Q	FL70
KULOK	4R	4Q	4000 ft
LASGA	4R	3Q	FL70
PEROX	4R	3Q	FL70
TABAT	4R	4Q	FL70

HASSFURT (EDQT) SIDS			
FIX	RWY 11	RWY 29	INITAL
ANELA	1C	1D	5000 ft
LONLI	1C	1D	5000 ft

ATC FREQUENCIES		
CALLSIGN	LOGIN	FREQ
MÜNCHEN RADAR	EDDN_APP	129.520
NÜRNBERG DIRECTOR	EDDN_F_APP	119.470
NÜRNBERG TOWER	EDDN_TWR	118.300
NÜRNBERG GROUND	EDDN_GND	118.100
BAYREUTH INFO	EDQD_I_TWR	127.520
COBURG INFO	EDQC_I_TWR	128.670
HOF TOWER	EDQM_TWR	124.350
HASSFURT INFO	EDQT_I_TWR	119.800

RUNWAYS / APPROACHES								
AIRPORT	RWY	DIMENSION	APPROACHES	CRS	FAF/FAP	DIST	ALT	CAT
EDDN	28	2700 x 45 m	ILS, VOR/DME	277°	OSNUB	9.1 NM	4000'	IIb
	10	2700 x 45 m	ILS, VOR/DME, RNAV (GPS)	097°	VENUB	9.7 NM	4200'	I
EDQD	06	1082 x 30 m	RNAV (GPS)	058°	BETUT	6.2 NM	3600'	-
	24	1082 x 30 m	CIRCLING	238°	-	-	-	-
EDQC	30	860 x 20 m	RNAV (GPS)	298°	KOPUG	7.9 NM	4000'	-
	12	860 x 20 m	CIRCLING	118°	-	-	-	-
EDQM	26	1480 x 30 m	ILS, NDB/DME	264°	-	5.0 NM	3800'	I
	08	1480 x 30 m	NDB/DME	084°	-	5.7 NM	3800'	-
EDQT	29	1043 x 23 m	RNAV (GPS)	294°	ELTAM	10.2 NM	4000'	-
	11	1043 x 23 m	-	114°	-	-	-	-

hPa (mb)	HEKTOPASCAL - INCHES									
	0	1	2	3	4	5	6	7	8	9
940	27.76	27.79	27.82	27.85	27.88	27.91	27.94	27.96	27.99	28.02
950	28.05	28.08	28.11	28.14	28.17	28.20	28.23	28.26	28.29	28.32
960	28.35	28.38	28.41	28.44	28.47	28.50	28.53	28.56	28.58	28.61
970	28.64	28.67	28.70	28.73	28.76	28.79	28.82	28.85	28.88	28.91
980	28.94	28.97	29.00	29.03	29.06	29.09	29.12	29.15	29.18	29.20
990	29.23	29.26	29.29	29.32	29.35	29.38	29.41	29.44	29.47	29.50
1000	29.53	29.56	29.59	29.62	29.65	29.68	29.71	29.74	29.77	29.80
1010	29.83	29.85	29.88	29.91	29.94	29.97	30.00	30.03	30.06	30.09
1020	30.12	30.15	30.18	30.21	30.24	30.27	30.30	30.33	30.36	30.39
1030	30.42	30.45	30.47	30.50	30.53	30.56	30.59	30.62	30.65	30.68
1040	30.71	30.74	30.77	30.80	30.83	30.86	30.89	30.92	30.95	30.98
1050	31.01	31.04	31.07	31.09	31.12	31.15	31.18	31.21	31.24	31.27

VERTICAL PLANNING INFORMATION EDDN			
RWY 28		RWY 10	
PLAN YOUR DESCENT SO AS TO CROSS			
ERTES	FL130	ERTES	FL130
NIBIL	FL110	NIBIL	FL110
ROTEN	FL110	ROTEN	FL110
LETKU	FL110	LETKU	FL110
UNKUL	FL140	UNKUL	FL140

TRANSITION-LEVEL	
QNH	TRL
- 977	FL80
978 - 1013	FL70
1014 - 1050	FL60
1051 -	FL50

MISC. ATC FREQUENCIES		
EDGG_CTR	135.720	EDMM_CTR 124.050
EDUU_CTR	133.650	EDMM_S_CTR 131.020
LKAA_CTR	127.120	EDMM_R_CTR 132.550
LOVV_CTR	134.350	EDMM_F_CTR 124.820
LSAS_CTR	128.050	EDMM_A_CTR 129.100
LIMM_CTR	127.450	
LIPP_CTR	125.470	EDDM_1_APP 128.020
LOWW_APP	128.200	EDDM_2_APP 120.770
EDDF_N_APP	120.800	
EDDS_APP	125.050	
EDDC_APP	125.620	
EDDP_APP	126.170	
LKPR_APP	127.570	
LOWI_APP	119.270	
LOWS_APP	123.720	
LSZH_V_APP	120.750	