

Valid for flight simulation use only - do not use for real life navigation

Terminal 1

-A-	-B-	-C-	-D-	-E-	-F-
BER	BAW/BGM	AFL	ICE	ADH	AIZ
CFG	CYP	BAL	KLM	AFR	ELY
NLY	DAL	CSA	NAX	AZA	ISR
	EZY	EIN/ETD	OLT	BTI	
	HHI	GMI/HAY	ROT	DAT	
	HLX	LHA	SAT	EZY	
	MAH/MON	OHY/OMA	TUI	FIN	
	SBI	PGT/POT	VOE/VGL	GWI	
	TAR	UAE	IBE		

Terminal 2

AAR	CTN	QTR
ACA	DLA	SAS
ADR	DLH	SIA
AMC	EWG	TAP
ANA	GEW	THA
ANZ	JAT	THY
AUA	JKK	UAL
BMA	LOT	USA
CIM	MSR	VRG
SWR	RUS	WTA

EDMM Squawks

2300-2337: EDMM (DEL-TWR)
 2340-2353: EDDN (GND-APP, EDQx, ETIC)
 2354-2367: EDMM (CTR, mit EDME, EDMS)
 2370-2377: EDMM (APP, mit EDMA, EDMO)
 7000 : VFR
 0033/0036: Mil. VFR/Polizei
 0020 : Rettungsheli

QNH

Up to 977	=	TRL80
978 - 1013	=	TRL70
1014-1050	=	TRL60
1051 - undef.	=	TRL50

MUENCHEN SIDs - INITIAL CLIMB FL70

*=Prop, **=preferred, TULSI=not to be filed

SID	08L	08R	26L	26R
ALG	Sun/Sat 1Q	1E	1S	1N
ANKER	7Q	8E	6S	8N
BIBAG	1Q	1E	1S 1W	1N
EVIVA	*Prop 2Q	2E	2S	3N
GIVMI	Jet 4Q	4E	5S	5W
INPUD	Jet 1Q	1E	1S	1N
KPT	*Prop 2Q/*1T	2E/*1P	1S	1N
KIRDI	1Q	1E	1S 1W	1N
MERSI	Jet 2Q	2E	3S	3N
MIQ	Non-RNAV 7Q	7E	7S	8N
OLASO	1Q	1E	1S	1N
OBAXA	*Prop 3Q	3E	4S	3N
RIDAR	5Q	5E	5S	5N
ROTAX	2Q	2E	1S 1W	1N
TULSI	9Q	1E	4S 1W	9N
TURBU	Jet 6Q	5E	5S 5W	4N
VAVOR	Jet 2Q	2E	1S 1W	1N

CAT II: ab RVR auf einer Bahn kleiner oder gleich 600 m und/oder Ceiling kleiner 200 ft
 CAT III: ab RVR auf einer Bahn kleiner 325 m

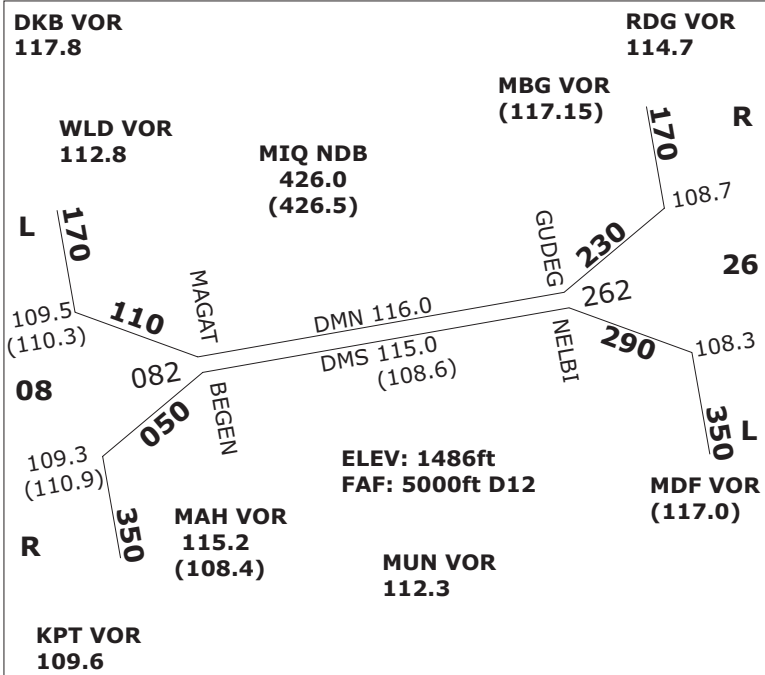
Augsburg SIDs - I.C. 3.500 ft (KPT FL70)

SID	25	07	SID	25	07
MAH	5G	4F	KPT	7G	7F
MIQ	4G	3F	RIDAR	4G	5F

DESCENTS on STARS

at or below

ANDEC	FL130	LURER	FL130	RIDAR	FL130
BAMTA	FL120	MITNU	FL110	ROKIL	FL110
BETOS	FL110	NAPSA	FL130	ROSAB	FL110
BURAM	FL130	OSTES	FL110	VESIX	FL110
DISUN	FL120	RENLO	FL130		
LANDU	FL110				



ATC FREQUENCIES - INTERNAL UNITS

EDMM_CTR	124.050	EDDM_1_APP	128.020
EDMM_S_CTR	131.020	EDDM_2_APP	120.770
EDMM_R_CTR	132.550	EDDM_F_APP	118.820
EDMM_R_CTR	132.550	EDDM_N_APP	123.900
EDMM_K_CTR	134.150	EDDM_S_APP	127.950
EDMM_S_CTR	131.020	EDDM_N_TWR	118.700
EDMM_T_CTR	133.570	EDDM_S_TWR	120.500
EDMM_R_CTR	132.550	EDDM_N_GND	121.970
EDMM_F_CTR	124.820	EDDM_S_GND	121.820
EDMM_A_CTR	129.100	EDDM_1_GND	121.770
EDMM_E_CTR	129.550	EDDM_2_GND	121.700
EDMM_K_CTR	134.150	EDDM_3_GND	121.920
EDMM_N_CTR	126.450	EDDM_DEL	121.720
EDMM_C_CTR	133.670		

Augsburg / EDMA

TWR: 124.970 MHz ELEV 1515 ft
RWY 07
APP RNAV (GPS)
FREQ 115.9 (AUG DME)
CRS 070°
LENGTH 1280m
FAP DIST/ALT (ABUSI) 6.1NM / 3500 ft
RWY 25
APP ILS DME/NDB/RNAV (GPS)
FREQ 108.50 (AUG)
CRS 250°
LENGTH 1280m
FAP DIST/ALT (BUREG) 5.6NM / 3500 ft

Oberpfaffenhofen / EDMO

TWR: 119.550 MHz ELEV 1947 ft
RWY 22
APP ILS DME / NDB GPS
FREQ 110.50 (OBI)
CRS 222°
LENGTH 2286m
FAP DIST/ALT 7 DME OBI / 4000 ft
RWY 04
APP ILS DME / NDB GPS
 RWY 22
 circling south east of apt

Ingolstadt / ETSI

TWR: 125.250 MHz ELEV 1202 ft
RWY 25L
APP ILS / NDB
FREQ 111.4 (MG)
CRS 248°
LENGTH 2940m
FAP DIST/ALT (SIGGI) 12 NM / 2700 ft
RWY 07R
APP ILS / NDB RWY 25L
 circling 07R

Friedrichshafen / EDNY

TWR: 120.070 MHz ELEV 1367 ft
RWY 06
APP ILS DME / RNAV (GPS)
FREQ 111.90 (IFHE)
CRS 059°
LENGTH 2356m
FAP DIST/ALT 5.2 DME FHD / 3000 ft
RWY 24
APP ILS / RNAV (GPS)
FREQ 111.90 (IFHW)
CRS 239°
LENGTH 2356m
FAP DIST/ALT 8.9 DME FHD / 4000 ft

Memmingen / EDJA

TWR: 126.850 MHz ELEV 2079 ft
RWY 24
APP ILS NDB, RNAV (GPS)
FREQ 110.10 (IAMW)
CRS 237°
LENGTH 2400m
FAP DIST/ALT (OGROB)/D6.9 ALD, 4000ft
RWY 06
APP NDB, RNAV (GPS)
FREQ 341, ALG
CRS 57°
LENGTH 2400m
FAP DIST/ALT (ERTUL)/D6.2 ALD, 4000ft

MISC. ATC FREQUENCIES

EDGG_CTR	135.720
EDUU_CTR	133.650
LKAA_CTR	127.120
LOVV_CTR	134.350
LSAS_CTR	128.050
LIMM_CTR	127.450
LIPP_CTR	125.470
LOWW_APP	128.200
EDDF_N_APP	120.800
EDDS_APP	125.050
EDDC_APP	125.620
EDDP_APP	126.170
LKPR_APP	127.570
LOWI_APP	119.270
LOWS_APP	123.720
LSZH_APP	131.150