

Valid for flight simulation use only - do not use for real life navigation

Terminal 1

-A-	-B-	-C-	-D-	-E-	-F-
BER	BAW/BGM	AFL	ICE	ADH	AIZ
CFG	CYP	BAL	KLM	AFR	ELY
NLY	DAL	CSA	NAX	AZA	ISR
	EZY	EIN/ETD	OLT	BTI	
	HHI	GMI/HAY	ROT	DAT	
	HLX	LHA	SAT	EZY	
	MAH/MON	OHY/OMA	TUI	FIN	
	SBI	PGT/POT	VOE/VGL	GWI	
	TAR	UAE	IBE		

Terminal 2

AAR	CTN	QTR
ACA	DLA	SAS
ADR	DLH	SIA
AMC	EWG	TAP
ANA	GEW	THA
ANZ	JAT	THY
AUA	JKK	UAL
BMA	LOT	USA
CIM	MSR	VRG
SWR	RUS	WTA

EDMM Squawks

2300-2337: EDMM (DEL-TWR)
 2340-2353: EDDN (GND-APP, EDQx, ETIC)
 2354-2367: EDMM (CTR, mit EDME, EDMS)
 2370-2377: EDMM (APP, mit EDMA, EDMO)
 7000 : VFR
 0033/0036: Mil. VFR/Polizei
 0020 : Rettungsheli

QNH

Up to 977	=	TRL80
978 - 1013	=	TRL70
1014-1050	=	TRL60
1051 - undef.	=	TRL50

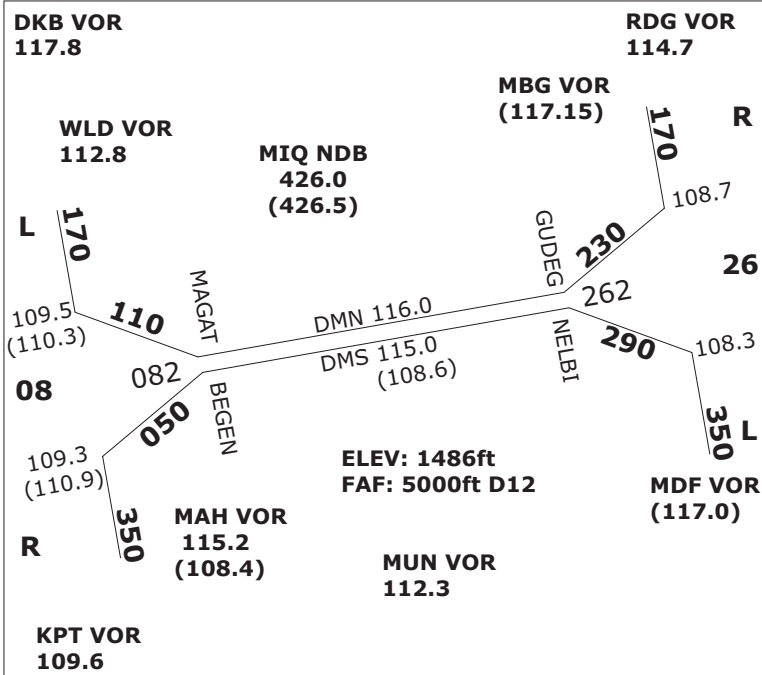
MUENCHEN SIDS - INITIAL CLIMB FL70

SID	08L	08R	26L	26R
ALG	Sun/Sat 1Q	1E•	1S•	1N
ANKER	7Q•	8E	6S	8N•
BIBAG	1Q	1E•	1S• 1W	1N
EVIVA	Prop 2Q•	2E	2S	3N•
GIVMI	Jet 4Q•	4E	5S	5W•
INPUD	Jet 1Q•	1E	1S	1N•
KPT	*Prop 2Q/*1T	2E•/*1P	1S•	1N
MEBEK	2Q	3E•	2S• 2W	1N
MERSI	Jet 2Q	2E•	3S•	3N
MIQ	Non-RNAV 7Q•	7E	7S	8N•
OLASO	1Q	1E•	1S•	1N
OBAXA	Prop 3Q	3E•	4S•	3N
RIDAR	5Q•	5E	5S•	5N
ROTAX	2Q	2E•	1S• 1W	1N
TULSI*)	9Q	1E•	4S• 1W	9N
TURBU	Jet 6Q	5E•	5S• 5W	4N
VAVOR	Jet 2Q	2E•	1S• 1W	1N

CAT II: ab RVR auf einer Bahn kleiner oder gleich 600 m und/oder Ceiling kleiner 200 ft
 CAT III: ab RVR auf einer Bahn kleiner 325 m

Augsburg SIDS - I.C. 3.500 ft (KPT FL70)

SID	25	07	SID	25	07
MAH	5G	4F	KPT	7G	7F
MIQ	4G	3F	RIDAR	4G	5F



DESCENTS on STARS

at or below			
ANDEC	FL130	LURER	FL130
BAMTA	FL120	MITNU	FL110
BETOS	FL110	NAPSA	FL110
BURAM	FL130	OSTES	FL110
DISUN	FL120	RENLO	FL130
LANDU	FL110	RIDAR	FL130
		ROKIL	FL110
		ROSAB	FL110
		VESIX	FL110

ATC FREQUENCIES - INTERNAL UNITS

EDMM_CTR	124.050	EDDM_1_APP	128.020
EDMM_S_CTR	131.020	EDDM_2_APP	120.770
EDMM_R_CTR	132.550	EDDM_F_APP	118.820
EDMM_K_CTR	134.150	EDDM_N_APP	123.900
EDMM_S_CTR	131.020	EDDM_S_APP	127.950
EDMM_T_CTR	133.570	EDDM_N_TWR	118.700
EDMM_R_CTR	132.550	EDDM_S_TWR	120.500
EDMM_F_CTR	124.820	EDDM_N_GND	121.970
EDMM_A_CTR	129.100	EDDM_S_GND	121.820
EDMM_E_CTR	129.550	EDDM_1_GND	121.770
EDMM_K_CTR	134.150	EDDM_2_GND	121.700
EDMM_N_CTR	126.450	EDDM_3_GND	121.920
EDMM_C_CTR	133.670	EDDM_DEL	121.720

Augsburg / EDMA
 TWR: 124.970 MHz ELEV 1515 ft
 RWY 07
 APP RNAV (GPS)
 FREQ 115.9 (AUG DME)
 CRS 070°
 LENGTH 1280m
 FAF DIST/ALT (ABUSI) 6.1NM / 3500 ft

RWY 25
 APP ILS DME/NDB/RNAV (GPS)
 FREQ 108.50 (AUG)
 CRS 250°
 LENGTH 1280m
 FAF DIST/ALT (BUREG) 5.6NM / 3500 ft

Oberpfaffenhofen / EDMO
 TWR: 119.550 MHz ELEV 1947 ft
 RWY 22
 APP ILS DME / NDB GPS
 FREQ 110.50 (OBI)
 CRS 222°
 LENGTH 2286m
 FAF DIST/ALT 7 DME OBI / 4000 ft

RWY 04
 APP ILS DME / NDB GPS
 RWY 22
 circling south east of apt

Ingolstadt / ETSI
 TWR: 125.250 MHz ELEV 1202 ft
 RWY 25L
 APP ILS / NDB
 FREQ 111.4 (MG)
 CRS 248°
 LENGTH 2940m
 FAF DIST/ALT (SIGGI) 12 NM / 2700 ft

RWY 07R
 APP ILS / NDB RWY 25L
 circling 07R

Friedrichshafen / EDNY
 TWR: 120.070 MHz ELEV 1367 ft
 RWY 06
 APP ILS DME / RNAV (GPS)
 FREQ 111.90 (IFHE)
 CRS 059°
 LENGTH 2356m
 FAF DIST/ALT 5.2 DME FHD / 3000 ft

RWY 24
 APP ILS / RNAV (GPS)
 FREQ 111.90 (IFHW)
 CRS 239°
 LENGTH 2356m
 FAF DIST/ALT 8.9 DME FHD / 4000 ft

Memmingen / EDJA
 TWR: 126.850 MHz ELEV 2078 ft
 RWY 24
 APP ILS NDB, RNAV (GPS)
 FREQ 110.10 (IAMW)
 CRS 238°
 LENGTH 2400m
 FAF DIST/ALT (OGROB)/D6.9 ALD, 4000ft

RWY 06
 APP NDB, RNAV (GPS)
 FREQ 341, ALG
 CRS 58°
 LENGTH 2400m
 FAF DIST/ALT (ERTUL)/D6.2 ALD, 4000ft

MISC. ATC FREQUENCIES

EDGG_CTR	135.720
EDUU_CTR	133.650
LKAA_CTR	127.120
LOVV_CTR	134.350
LSAS_CTR	128.050
LIMM_CTR	127.450
LIPP_CTR	125.470
LOWW_APP	128.200
EDDF_N_APP	120.800
EDDS_APP	125.050
EDDC_APP	125.620
EDDP_APP	126.170
LKPR_APP	127.570
LOWI_APP	119.270
LOWS_APP	123.720
LSZH_APP	131.150