

Valid for flight simulation use only - do not use for real life navigation

Terminal 1

-A-	-B-	-C-	-D-	-E-	-F-
AEA	BAW	AFL	SXS	AFR	KLM
BER	DAN	AHR	TSC	AZA	OAL
GMI	DAL	CSA	UAE	BLE	
CFG	HHI	LHA	DAT		
GWI	HLX	OHY	EIN		
	MAH	RJA	EZY		
	TAR	ROT	FIN		
			IBE		

Terminal 2

AAR	CTN	SAS
ACA	DLA	SIA
ADR	DLH	TAP
AMC	EWG	THA
ANA	JAT	THY
ANZ	JKK	UAL
AUA	LOT	USA
BMA	MSR	VRG
CIM	RUS	WTA
SWR		

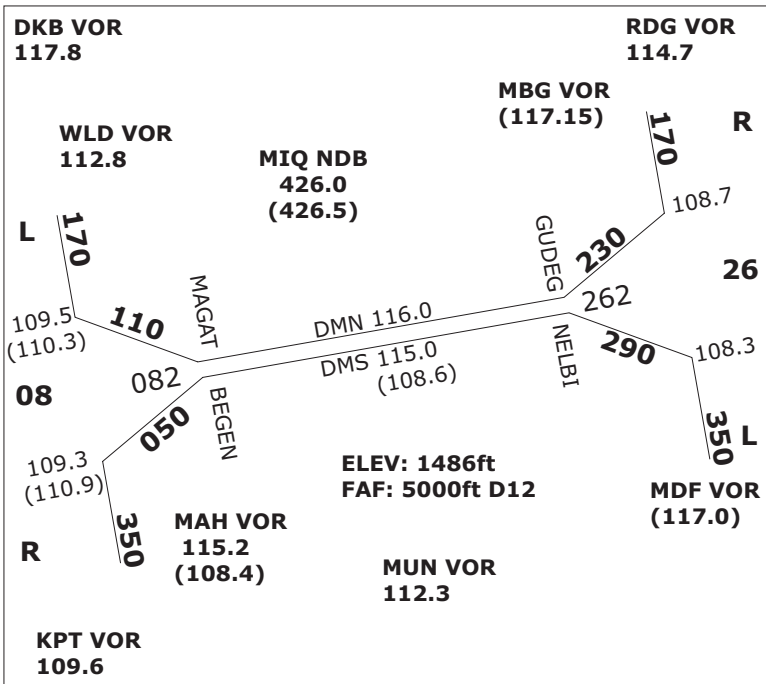
EDMM Squawks

2300-2337: EDDM (DEL-TWR)
 2340-2353: EDDN (GND-APP, EDQx, ETIC)
 2354-2367: EDMM (CTR, mit EDME, EDMS)
 2370-2377: EDDM (APP, mit EDMA, EDMO)
 7000 : VFR
 0033/0036: Mil. VFR/Polizei
 0020 : Rettungsheli

QNH **TRL**

Up to 977 = TRL80
 978 - 1013 = TRL70
 1014-1050 = TRL60
 1051 - undef. = TRL50

CAT II: ab RVR auf einer Bahn kleiner oder gleich 600 m und/oder Ceiling kleiner 200 ft
 CAT III: ab RVR auf einer Bahn kleiner 325 m



MUENCHEN SIDs - INITIAL CLIMB FL70

SID	08L	08R	26L	26R
ALG	Sun/Sat 1Q	1E•	1S•	1N
ANKER	7Q•	8E	6S	8N•
BIBAG	1Q	1E•	1S• 1W	1N
EVIVA	Prop 2Q•	2E	2S	3N•
GIVMI	Jet 4Q•	4E	5S	5W•
INPUD	Jet 1Q•	1E	1S	1N•
KPT	*Prop 2Q/*1T	2E•/*1P	1S•	1N
MEBEK	2Q	3E•	2S• 2W	1N
MERSI	Jet 2Q	2E•	3S•	3N
MIQ	Non-RNAV 7Q•	7E	7S	8N•
OLASO	1Q	1E•	1S•	1N
OBAXA	Prop 3Q	3E•	4S•	3N
RIDAR	5Q•	5E	5S•	5N
ROTAX	2Q	2E•	1S• 1W	1N
TULSI*)	9Q	1E•	4S• 1W	9N
TURBU	Jet 6Q	5E•	5S• 5W	4N
VAVOR	Jet 2Q	2E•	1S• 1W	1N

Augsburg SIDs - I.C. 3.500 ft (KPT FL70)

SID	25	07	SID	25	07
MAH	5G	4F	KPT	7G	7F
MIQ	4G	3F	RIDAR	4G	5F

DESCENTS on STARS
at or below

ANDEC FL130	LURER FL130	RIDAR FL130
BAMTA FL120	MITNU FL110	ROKIL FL110
BETOS FL110	NAPSA FL130	ROSAB FL110
BURAM FL130	OSTES FL110	VESIX FL110
DISUN FL120	RENLO FL130	
LANDU FL110		

ATC FREQUENCIES - INTERNAL UNITS

EDMM_CTR 124.050	EDDM_1_APP 128.020
EDMM_S_CTR 131.020	EDDM_2_APP 120.770
EDMM_R_CTR 132.550	EDDM_F_APP 118.820
EDMM_R_CTR 132.550	EDDM_N_APP 123.900
EDMM_K_CTR 134.150	EDDM_S_APP 127.950
EDMM_S_CTR 131.020	EDDM_N_TWR 118.700
EDMM_T_CTR 133.570	EDDM_S_TWR 120.500
EDMM_R_CTR 132.550	EDDM_N_GND 121.970
EDMM_F_CTR 124.820	EDDM_S_GND 121.820
EDMM_A_CTR 129.100	EDDM_1_GND 121.770
EDMM_E_CTR 129.550	EDDM_2_GND 121.700
EDMM_K_CTR 134.150	EDDM_3_GND 121.920
EDMM_N_CTR 126.450	EDDM_DEL 121.720
EDMM_C_CTR 133.670	

Augsburg / EDMA
TWR: 124.970 MHz ELEV 1515 ft

RWY 07
APP RNAV (GPS)
FREQ 115.9 (AUG DME)
CRS 070°
LENGTH 1280m
FAF DIST/ALT (ABUSI) 6.1NM / 3500 ft

RWY 25
APP ILS DME/NDB/RNAV (GPS)
FREQ 108.50 (AUG)
CRS 250°
LENGTH 1280m
FAF DIST/ALT (BUREG) 5.6NM / 3500 ft

Oberpfaffenhofen / EDMO
TWR: 119.550 MHz ELEV 1947 ft

RWY 22
APP ILS DME / NDB GPS
FREQ 110.50 (OBI)
CRS 222°
LENGTH 2286m
FAP DIST/ALT 7 DME OBI / 4000 ft

RWY 04
APP ILS DME / NDB GPS
 RWY 22 circling south east of apt

Ingolstadt / ETSI
TWR: 125.250 MHz ELEV 1202 ft

RWY 25L
APP ILS / NDB
FREQ 111.4 (MG)
CRS 248°
LENGTH 2940m
FAP DIST/ALT (SIGGI) 12 NM / 2700 ft

RWY 07R
APP ILS / NDB RWY 25L circling 07R

Friedrichshafen / EDNY
TWR: 120.070 MHz ELEV 1367 ft

RWY 06
APP ILS DME / RNAV (GPS)
FREQ 111.90 (IFHE)
CRS 059°
LENGTH 2356m
FAP DIST/ALT 5.2 DME FHD / 3000 ft

RWY 24
APP ILS / RNAV (GPS)
FREQ 111.90 (IFHW)
CRS 239°
LENGTH 2356m
FAP DIST/ALT 8.9 DME FHD / 4000 ft

Memmingen / EDJA
TWR: 126.850 MHz ELEV 2078 ft

RWY 24
APP ILS NDB, RNAV (GPS)
FREQ 110.10 (IAMW)
CRS 238°
LENGTH 2400m
FAP DIST/ALT (OGROB)/D6.9 ALD, 4000ft

RWY 06
APP NDB, RNAV (GPS)
FREQ 341, ALG
CRS 58°
LENGTH 2400m
FAP DIST/ALT (ERTUL)/D6.2 ALD, 4000ft

MISC. ATC FREQUENCIES

EDGG_CTR	135.720
EDUU_CTR	133.650
LKAA_CTR	127.120
LOVV_CTR	134.350
LSAS_CTR	128.050
LIMM_CTR	127.450
LIPP_CTR	125.470
LOWW_APP	128.200
EDDF_N_APP	120.800
EDDS_APP	125.050
EDDC_APP	125.620
EDDP_APP	126.170
LKPR_APP	127.570
LOWI_APP	119.270
LOWS_APP	123.720
LSZH_APP	131.150