

Valid for flight simulation use only - do not use for real life navigation

Terminal 1

-A-	-B-	-C-	-D-	-E-	-F-
AEA	BAW	AFL	SXS	AFR	KLM
BER	DAN	AHR	TSC	AZA	OAL
GMI	DAL	CSA	UAE	BLE	
CFG	HHI	LHA	DAT		
GWI	HLX	OHY	EIN		
	MAH	RJA	EZY		
	TAR	ROT	FIN		
			IBE		

Terminal 2

AAR	CTN	SAS
ACA	DLA	SIA
ADR	DLH	TAP
AMC	EWG	THA
ANA	JAT	THY
ANZ	JKK	UAL
AUA	LOT	USA
BMA	MSR	VRG
CIM	RUS	WTA
SWR		

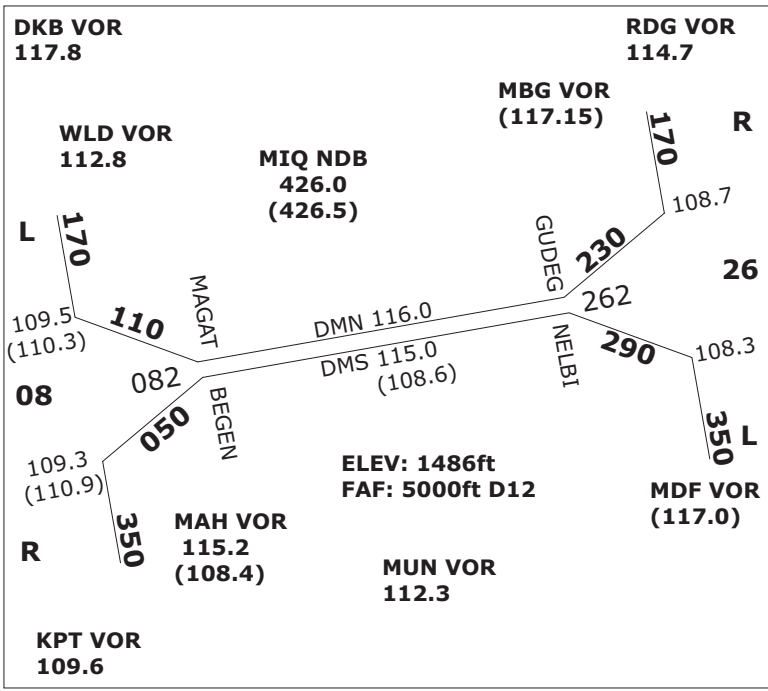
EDMM Squawks

2301-2337:	EDDM (DEL-TWR)
2340-2353:	EDDN (GND-APP, EDQx, ETIC)
2354-2367:	EDMM (CTR, mit EDME, EDMS)
2370-2377:	EDDM (APP, mit EDMA, EDMO)
7000 :	VFR
0033/0036:	Mil. VFR/Polizei
0020 :	Rettungsheli

QNH **TRL**

Up to 977	=	TRL80
978 - 1013	=	TRL70
1014-1050	=	TRL60
1051 - undef.	=	TRL50

CAT II: ab RVR auf einer Bahn kleiner oder gleich 600 m und/oder Ceiling kleiner 200 ft
 CAT III: ab RVR auf einer Bahn kleiner 325 m



MUENCHEN SIDs - INITIAL CLIMB FL70

SID	08L	08R	26L	26R
ALG Sun/Sat	1Q	1E	1S	1N
ANKER	7Q	8E	6S	8N
EGG	3Q	5E	5S 5W	4N
EVIVA Prop	2Q	2E	2S	3N
GIVMI Jet	4Q	4E	5S	5W
INPUD Jet	1Q	1E	1S	1N
KPT *Prop 2Q/*1T	2E/*1P	1S		1N
MEBEK	2Q	3E	2S 2W	1N
MERSI Jet	2Q	2E	3S	3N
MIQ Non-RNAV	7Q	7E	7S	8N
OBAXA Prop	3Q	3E	4S	3N
RIDAR	5Q	5E	5S	5N
ROTAX	2Q	2E	1S 1W	1N
TULSI*	9Q	1E	4S 1W	9N
TURBU Jet	6Q	5E	5S 5W	4N
VAVOR Jet	2Q	2E	1S 1W	1N

Augsburg SIDs - I.C. 3.500 ft (KPT FL70)

SID	25	07	SID	25	07
MAH	4G	3F	KPT	7G	7F
MIQ	3G	3F	RIDAR	4G	5F

DESCENTS on STARS
at or below

ANDEC FL130	LURER FL130	RIDAR FL130
BETOS FL110	MITNU FL110	ROKIL FL110
BURAM FL130	NAPSA FL110	ROSAB FL110
DISUN FL120	OSTES FL110	VESIX FL110
LANDU FL110	RENLO FL130	

ATC FREQUENCIES - INTERNAL UNITS

EDMM_CTR 124.050	EDDM_1_APP 128.020
EDMM_S_CTR 131.020	EDDM_2_APP 120.770
EDMM_R_CTR 132.550	EDDM_F_APP 118.820
EDMM_R_CTR 132.550	EDDM_N_APP 123.900
EDMM_K_CTR 134.150	EDDM_S_APP 127.950
EDMM_S_CTR 131.020	EDDM_N_TWR 118.700
EDMM_T_CTR 133.570	EDDM_S_TWR 120.500
EDMM_R_CTR 132.550	EDDM_N_GND 121.970
EDMM_F_CTR 124.820	EDDM_S_GND 121.820
EDMM_A_CTR 129.100	EDDM_1_GND 121.770
EDMM_E_CTR 129.550	EDDM_2_GND 121.700
EDMM_K_CTR 134.150	EDDM_3_GND 121.920
EDMM_N_CTR 126.450	EDDM_DEL 121.720
EDMM_C_CTR 133.670	

Augsburg / EDMA

TWR: 124.970 MHz ELEV 1515 ft
 RWY 07
 APP RNAV (GPS)
 FREQ 115.9 (AUG DME)
 CRS 070°
 LENGTH 1280m
 FAP DIST/ALT (ABUSI) 6.1NM / 3500 ft

RWY 25
 APP ILS DME/NDB/RNAV (GPS)
 FREQ 108.50 (AUG)
 CRS 250°
 LENGTH 1280m
 FAP DIST/ALT (BUREG) 5.6NM / 3500 ft

Oberpfaffenhofen / EDMO

TWR: 119.550 MHz ELEV 1947 ft
 RWY 22
 APP ILS DME / NDB GPS
 FREQ 110.50 (OBI)
 CRS 222°
 LENGTH 2286m
 FAP DIST/ALT 7 DME OBI / 4000 ft

RWY 04
 APP ILS DME / NDB GPS
 RWY 22
 circling south east of apt

Ingolstadt / ETSI

TWR: 125.250 MHz ELEV 1202 ft
 RWY 25L
 APP ILS / NDB
 FREQ 111.4 (MG)
 CRS 248°
 LENGTH 2940m
 FAP DIST/ALT (SIGGI) 12 NM / 2700 ft

RWY 07R
 APP ILS / NDB RWY 25L
 circling 07R

Friedrichshafen / EDNY

TWR: 120.070 MHz ELEV 1367 ft
 RWY 06
 APP ILS DME / RNAV (GPS)
 FREQ 111.90 (IFHE)
 CRS 059°
 LENGTH 2356m
 FAP DIST/ALT 5.2 DME FHD / 3000 ft

RWY 24
 APP ILS / RNAV (GPS)
 FREQ 111.90 (IFHW)
 CRS 239°
 LENGTH 2356m
 FAP DIST/ALT 8.9 DME FHD / 4000 ft

Memmingen / EDJA

TWR: 126.850 MHz ELEV 2078 ft
 RWY 24
 APP ILS NDB, RNAV (GPS)
 FREQ 110.10 (IAMW)
 CRS 238°
 LENGTH 2400m
 FAP DIST/ALT (OGROB)/D6.9 ALD, 4000ft

RWY 06
 APP NDB, RNAV (GPS)
 FREQ 341, ALG
 CRS 58°
 LENGTH 2400m
 FAP DIST/ALT (ERTUL)/D6.2 ALD, 4000ft

MISC. ATC FREQUENCIES

EDGG_CTR	135.720
EDUU_CTR	133.650
LKAA_CTR	127.120
LOVV_CTR	134.350
LSAS_CTR	128.050
LIMM_CTR	127.450
LIPP_CTR	125.470
LOWW_APP	128.200
EDDF_N_APP	120.800
EDDS_APP	125.050
EDDC_APP	125.620
EDDP_APP	126.170
LKPR_APP	127.570
LOWI_APP	119.270
LOWS_APP	123.720
LSZH_APP	131.150