

Valid for flight simulation use only - do not use for real life navigation

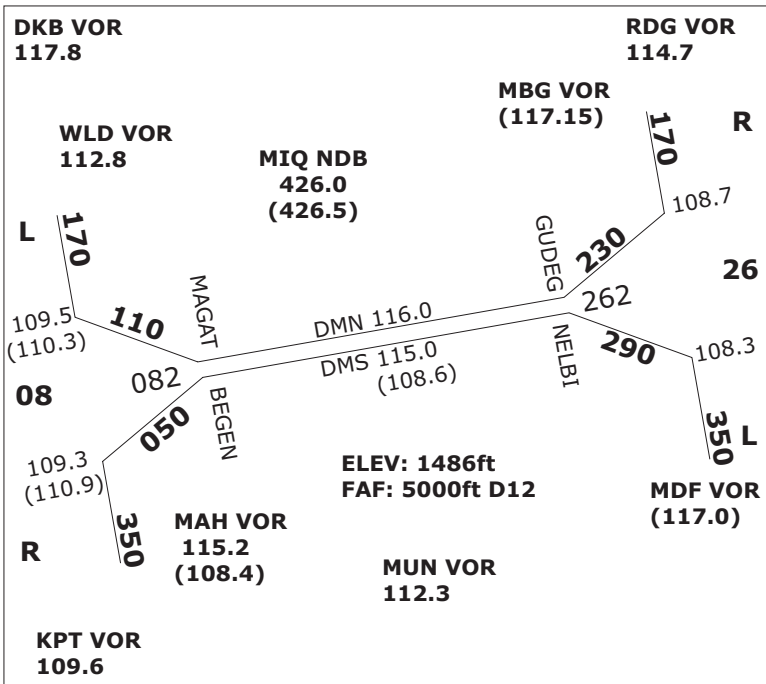
| Terminal 1 |     |     |     |     |     |
|------------|-----|-----|-----|-----|-----|
| -A-        | -B- | -C- | -D- | -E- | -F- |
| AEA        | BAW | AFL | SXS | AFR | KLM |
| BER        | DAN | AHR | TSC | AZA | OAL |
| GMI        | DAL | CSA | UAE | BLE |     |
| CFG        | HHI | OHY | DAT |     |     |
| GWI        | HLX | RJA | EIN |     |     |
|            | MAH | ROT | EZY |     |     |
|            | TAR |     | FIN |     |     |
|            |     |     | IBE |     |     |

| Terminal 2 |     |     |
|------------|-----|-----|
| AAR        | CTN | SAS |
| ACA        | DLA | SIA |
| ADR        | DLH | TAP |
| AMC        | EWG | THA |
| ANA        | JAT | THY |
| ANZ        | JKK | UAL |
| AUA        | LHA | USA |
| BMA        | LOT | VRG |
| CIM        | MSR | WTA |
| SWR        | RUS |     |

| EDMM Squawks |                            |
|--------------|----------------------------|
| 2301-2337:   | EDDM (DEL-TWR)             |
| 2340-2353:   | EDDN (GND-APP, EDQx, ETIC) |
| 2354-2367:   | EDMM (CTR, mit EDME, EDMS) |
| 2370-2377:   | EDDM (APP, mit EDMA, EDMO) |
| 7000 :       | VFR                        |
| 0033/0036:   | Mil. VFR/Polizei           |
| 0020 :       | Rettungsheli               |

| QNH           | TRL     |
|---------------|---------|
| Up to 977     | = TRL80 |
| 978 - 1013    | = TRL70 |
| 1014-1050     | = TRL60 |
| 1051 - undef. | = TRL50 |

CAT II: ab RVR auf einer Bahn kleiner oder gleich 600m und/oder Ceiling kleiner 200 ft  
 CAT III: ab RVR auf einer Bahn kleiner oder gleich 325m



| MUENCHEN SIDs - INITIAL CLIMB FL70 |              |         |        |     |
|------------------------------------|--------------|---------|--------|-----|
| SID                                | 08L          | 08R     | 26L    | 26R |
| ALG                                | Sun/Sat 1Q   | 1E•     | 1S•    | 1N  |
| ANKER                              | 7Q•          | 8E      | 6S     | 8N• |
| EGG                                | 3Q           | 5E•     | 5S• 5W | 4N  |
| EVIVA                              | Prop 2Q•     | 2E      | 2S     | 3N• |
| GIVMI                              | Jet 4Q•      | 4E      | 5S     | 5W• |
| INPUD                              | Jet 1Q•      | 1E      | 1S     | 1N• |
| KPT                                | *Prop 2Q/*1T | 2E•/*1P | 1S•    | 1N  |
| MEBEK                              | 2Q           | 3E•     | 2S• 2W | 1N  |
| MERSI                              | Jet 2Q       | 2E•     | 3S•    | 3N  |
| MIQ                                | Non-RNAV 7Q• | 7E      | 7S     | 8N• |
| OBAXA                              | Prop 3Q      | 3E•     | 4S•    | 3N  |
| RIDAR                              | 5Q•          | 5E      | 5S•    | 5N  |
| ROTAX                              | 2Q           | 2E•     | 1S• 1W | 1N  |
| TULSI*)                            | 9Q           | 1E•     | 4S• 1W | 9N  |
| TURBU                              | Jet 6Q       | 5E•     | 5S• 5W | 4N  |
| VAVOR                              | Jet 2Q       | 2E•     | 1S• 1W | 1N  |

| Augsburg SIDs - I.C. 3.500 ft (KPT FL70) |    |    |       |    |    |
|--|----|----|-------|----|----|
| SID                                      | 25 | 07 | SID   | 25 | 07 |
| MAH                                      | 4G | 3F | KPT   | 7G | 7F |
| MIQ                                      | 3G | 3F | RIDAR | 4G | 5F |

| DESCENTS on STARS at or below |       |       |       |       |       |
|-------------------------------|-------|-------|-------|-------|-------|
| ANDEC                         | FL130 | LURER | FL130 | RIDAR | FL130 |
| BETOS                         | FL110 | MITNU | FL110 | ROKIL | FL110 |
| BURAM                         | FL130 | NAPSA | FL110 | ROSAB | FL110 |
| DISUN                         | FL120 | OSTES | FL110 | VESIX | FL110 |
| LANDU                         | FL110 | RENLO | FL130 |       |       |

| ATC FREQUENCIES - INTERNAL UNITS |                |            |         |
|----------------------------------|----------------|------------|---------|
| <b>EDMM_CTR</b>                  | <b>124.050</b> | EDDM_1_APP | 128.020 |
| EDMM_S_CTR                       | 131.020        | EDDM_2_APP | 120.770 |
| EDMM_R_CTR                       | 132.550        | EDDM_F_APP | 118.820 |
| <b>EDMM_R_CTR</b>                | <b>132.550</b> | EDDM_N_APP | 123.900 |
| EDMM_K_CTR                       | 134.150        | EDDM_S_APP | 127.950 |
| <b>EDMM_S_CTR</b>                | <b>131.020</b> | EDDM_N_TWR | 118.700 |
| EDMM_T_CTR                       | 133.570        | EDDM_S_TWR | 120.500 |
| <b>EDMM_R_CTR</b>                | <b>132.550</b> | EDDM_N_GND | 121.970 |
| EDMM_F_CTR                       | 124.820        | EDDM_S_GND | 121.820 |
| EDMM_A_CTR                       | 129.100        | EDDM_1_GND | 121.770 |
| EDMM_E_CTR                       | 129.550        | EDDM_2_GND | 121.700 |
| <b>EDMM_K_CTR</b>                | <b>134.150</b> | EDDM_3_GND | 121.920 |
| EDMM_N_CTR                       | 126.450        | EDDM_DEL   | 121.720 |
| EDMM_C_CTR                       | 133.670        |            |         |

| Augsburg / EDMA |                          |
|-----------------|--------------------------|
| TWR:            | 124.970 MHz ELEV 1515 ft |
| RWY             | 07                       |
| APP             | RNAV (GPS)               |
| FREQ            | 115.9 (AUG DME)          |
| CRS             | 070°                     |
| LENGTH          | 1280m                    |
| FAP DIST/ALT    | (ABUSI) 6.1NM / 3500 ft  |
| RWY             | 25                       |
| APP             | ILS DME/NDB/RNAV (GPS)   |
| FREQ            | 108.50 (AUG)             |
| CRS             | 250°                     |
| LENGTH          | 1280m                    |
| FAP DIST/ALT    | (BUREG) 5.6NM / 3500 ft  |

| Oberpfaffenhofen / EDMO |                                   |
|-------------------------|-----------------------------------|
| TWR:                    | 119.550 MHz ELEV 1947 ft          |
| RWY                     | 22                                |
| APP                     | ILS DME / NDB GPS                 |
| FREQ                    | 110.50 (OBI)                      |
| CRS                     | 222°                              |
| LENGTH                  | 2286m                             |
| FAP DIST/ALT            | 7 DME OBI / 4000 ft               |
| RWY                     | 04                                |
| APP                     | ILS DME / NDB GPS                 |
|                         | RWY 22 circling south east of apt |

| Ingolstadt / ETSI |                                |
|-------------------|--------------------------------|
| TWR:              | 125.250 MHz ELEV 1202 ft       |
| RWY               | 25L                            |
| APP               | ILS / NDB                      |
| FREQ              | 111.4 (MG)                     |
| CRS               | 248°                           |
| LENGTH            | 2940m                          |
| FAP DIST/ALT      | (SIGGI) 12 NM / 2700 ft        |
| RWY               | 07R                            |
| APP               | ILS / NDB RWY 25L circling 07R |

| Friedrichshafen / EDNY |                          |
|------------------------|--------------------------|
| TWR:                   | 120.070 MHz ELEV 1367 ft |
| RWY                    | 06                       |
| APP                    | ILS DME / RNAV (GPS)     |
| FREQ                   | 111.90 (IFHE)            |
| CRS                    | 059°                     |
| LENGTH                 | 2356m                    |
| FAP DIST/ALT           | 5.2 DME FHD / 3000 ft    |
| RWY                    | 24                       |
| APP                    | ILS / RNAV (GPS)         |
| FREQ                   | 111.90 (IFHW)            |
| CRS                    | 239°                     |
| LENGTH                 | 2356m                    |
| FAP DIST/ALT           | 8.9 DME FHD / 4000 ft    |

| Memmingen / EDJA |                          |
|------------------|--------------------------|
| TWR:             | 126.850 MHz ELEV 2078 ft |
| RWY              | 24                       |
| APP              | ILS NDB, RNAV (GPS)      |
| FREQ             | 110.10 (IAMW)            |
| CRS              | 238°                     |
| LENGTH           | 2400m                    |
| FAP DIST/ALT     | (OGROB)/D6.9 ALD, 4000ft |
| RWY              | 06                       |
| APP              | NDB, RNAV (GPS)          |
| FREQ             | 341, ALG                 |
| CRS              | 58°                      |
| LENGTH           | 2400m                    |
| FAP DIST/ALT     | (ERTUL)/D6.2 ALD, 4000ft |

| MISC. ATC FREQUENCIES |         |
|-----------------------|---------|
| EDGG_CTR              | 135.720 |
| EDUU_CTR              | 133.650 |
| LKAA_CTR              | 127.120 |
| LOVV_CTR              | 134.350 |
| LSAS_CTR              | 128.050 |
| LIMM_CTR              | 127.450 |
| LIPP_CTR              | 125.470 |
| LOWW_APP              | 128.200 |
| EDDF_N_APP            | 120.800 |
| EDDS_APP              | 125.050 |
| EDDC_APP              | 125.620 |
| EDDP_APP              | 126.170 |
| LKPR_APP              | 127.570 |
| LOWI_APP              | 119.270 |
| LOWS_APP              | 123.720 |
| LSZH_V_APP            | 120.750 |