

Valid for flight simulation use only - do not use for real life navigation

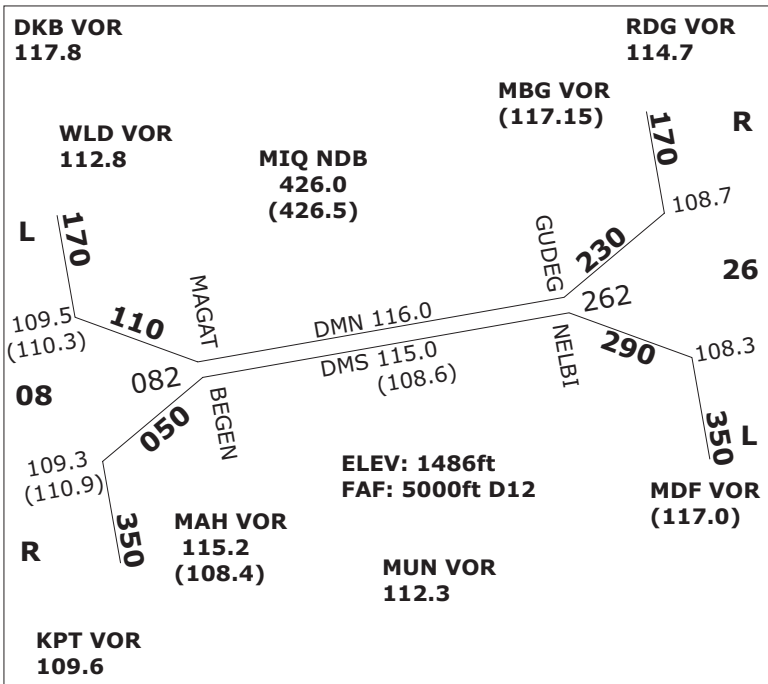
Terminal 1					
-A-	-B-	-C-	-D-	-E-	-F-
AEA	BAW	AFL	SXS	AFR	KLM
BER	DAN	AHR	TSC	AZA	OAL
GMI	DAL	CSA	UAE	BLE	
CFG	HHI	OHY	DAT		
GWI	HLX	RJA	EIN		
	MAH	ROT	EZY		
	TAR		FIN		
			IBE		

Terminal 2		
AAR	CTN	SAS
ACA	DLA	SIA
ADR	DLH	TAP
AMC	EWG	THA
ANA	JAT	THY
ANZ	JKK	UAL
AUA	LHA	USA
BMA	LOT	VRG
CIM	MSR	WTA
SWR	RUS	

EDMM Squawks	
2301-2337:	EDDM (DEL-TWR)
2340-2353:	EDDN (GND-APP, EDQx, ETIC)
2354-2367:	EDMM (CTR, mit EDME, EDMS)
2370-2377:	EDDM (APP, mit EDMA, EDMO)
7000 :	VFR
0033/0036:	Mil. VFR/Polizei
0020 :	Rettungsheli

QNH	TRL
Up to 977	= TRL80
978 - 1013	= TRL70
1014-1050	= TRL60
1051 - undef.	= TRL50

CAT II: ab RVR auf einer Bahn kleiner oder gleich 600m und/oder Ceiling kleiner 200 ft  
CAT III: ab RVR auf einer Bahn kleiner oder gleich 325m



MUENCHEN SIDs - INITIAL CLIMB FL70				
SID	08L	08R	26L	26R
ALG	Sun/Sat 1Q	1E•	1S•	1N
ANKER	7Q•	8E	6S	8N•
EGG	3Q	5E•	5S• 5W	4N
EVIVA	Prop 2Q•	2E	2S	3N•
GIVMI	Jet 4Q•	4E	5S	5W•
INPUD	Jet 1Q•	1E	1S	1N•
KPT	2Q	2E•	1S•	1N
MEBEK	2Q	3E•	2S• 2W	1N
MERSI	Jet 2Q	2E•	3S•	3N
MIQ	Non-RNAV 7Q•	7E	7S	8N•
OBAXA	Prop 3Q	3E•	4S•	3N
RIDAR	5Q•	5E	5S•	5N
ROTAX	2Q	2E•	1S• 1W	1N
TULSI*)	9Q	1E•	4S• 1W	9N
TURBU	Jet 6Q	5E•	5S• 5W	4N
VAVOR	Jet 2Q	2E•	1S• 1W	1N

Augsburg SIDs - I.C. 3.500 ft (KPT FL70)					
SID	25	07	SID	25	07
MAH	4G	3F	KPT	7G	7F
MIQ	3G	3F	RIDAR	4G	5F

DESCENDS & STARS					
ANDEC	FI130	DEGIN 1A	FI120	NAPSA 1A	FL110
ABGAS 1A		DISUN	FL120	OBAGA 1A	
ARPOT 1A		IBRIR 1A		OSDER 1A	
BETOS	FL110	KOGOL 1A		RENLO 1A	FL130
BIXEL 1A	FL120	LURER	FL130	RIDAR 1A	FL130
BURAM 1A	FL130	LANDU	FL110	ROKIL	FL110
		MERSI 1A		VAMAS 1A	FL110

ATC FREQUENCIES - INTERNAL UNITS			
<b>EDMM_CTR</b>	<b>124.050</b>	EDDM_N_APP	128.020
EDMM_S_CTR	131.020	EDDM_S_APP	120.770
EDMM_R_CTR	132.550	EDDM_F_APP	118.820
<b>EDMM_R_CTR</b>	<b>132.550</b>	EDDM_N_DEP	123.900
EDMM_K_CTR	134.150	EDDM_S_DEP	127.950
<b>EDMM_S_CTR</b>	<b>131.020</b>	EDDM_N_TWR	118.700
EDMM_T_CTR	133.570	EDDM_S_TWR	120.500
<b>EDMM_R_CTR</b>	<b>132.550</b>	EDDM_N_GND	121.970
EDMM_F_CTR	124.820	EDDM_S_GND	121.820
EDMM_A_CTR	129.100	EDDM_1_GND	121.770
EDMM_E_CTR	129.550	EDDM_2_GND	121.700
<b>EDMM_K_CTR</b>	<b>134.150</b>	EDDM_3_GND	121.920
EDMM_N_CTR	126.450	EDDM_DEL	121.720
EDMM_C_CTR	133.670		

Augsburg / EDMA	
TWR:	124.970 MHz
ELEV	1515 ft
RWY	07
APP	RNAV (GPS)
FREQ	115.9 (AUG DME)
CRS	070°
LENGTH	1280m
FAP DIST/ALT	(ABUSI) 6.1NM / 3500 ft
RWY	25
APP	ILS DME/NDB/RNAV (GPS)
FREQ	108.50 (AUG)
CRS	250°
LENGTH	1280m
FAP DIST/ALT	(BUREG) 5.6NM / 3500 ft

Oberpfaffenhofen / EDMO	
TWR:	119.550 MHz
ELEV	1947 ft
RWY	22
APP	ILS DME / NDB GPS
FREQ	110.50 (OBI)
CRS	222°
LENGTH	2286m
FAP DIST/ALT	7 DME OBI / 4000 ft
RWY	04
APP	ILS DME / NDB GPS
	RWY 22
	circling south east of apt

Ingolstadt / ETSI	
TWR:	125.250 MHz
ELEV	1202 ft
RWY	25L
APP	ILS / NDB
FREQ	111.4 (MG)
CRS	248°
LENGTH	2940m
FAP DIST/ALT	(SIGGI) 12 NM / 2700 ft
RWY	07R
APP	ILS / NDB RWY 25L
	circling 07R

Friedrichshafen / EDNY	
TWR:	120.070 MHz
ELEV	1367 ft
RWY	06
APP	ILS DME / RNAV (GPS)
FREQ	111.90 (IFHE)
CRS	059°
LENGTH	2356m
FAP DIST/ALT	5.2 DME FHD / 3000 ft
RWY	24
APP	ILS / RNAV (GPS)
FREQ	111.90 (IFHW)
CRS	239°
LENGTH	2356m
FAP DIST/ALT	8.9 DME FHD / 4000 ft

Memmingen / EDJA	
TWR:	126.850 MHz
ELEV	2078 ft
RWY	24
APP	ILS NDB, RNAV (GPS)
FREQ	110.10 (IAMW)
CRS	238°
LENGTH	2400m
FAP DIST/ALT	(OGROB)/D6.9 ALD, 4000ft
RWY	06
APP	NDB, RNAV (GPS)
FREQ	341, ALG
CRS	58°
LENGTH	2400m
FAP DIST/ALT	(ERTUL)/D6.2 ALD, 4000ft

MISC. ATC FREQUENCIES	
EDGG_CTR	135.720
EDUU_CTR	133.650
LKAA_CTR	127.120
LOVV_CTR	134.350
LSAS_CTR	128.050
LIMM_CTR	127.450
LIPP_CTR	125.470
LOWW_APP	128.200
EDDF_N_APP	120.800
EDDS_APP	125.050
EDDC_APP	125.620
EDDP_APP	126.170
LKPR_APP	127.570
LOWI_APP	119.270
LOWS_APP	123.720
LSZH_V_APP	120.750