

Valid for flight simulation use only - do not use for real life navigation

**Terminal 1**

-A-	-B-	-C-	-D-	-E-	-F-
AEA	BAW	AFL	SXS	AFR	KLM
BER	DAN	AHR	TSC	AZA	OAL
GMI	DAL	CSA	UAE	BLE	
CFG	HHI	OHY	DAT		
GWI	HLX	RJA	EIN		
	MAH	ROT	EZY		
	TAR		FIN		
			IBE		

**Terminal 2**

AAR	CTN	SAS
ACA	DLA	SIA
ADR	DLH	TAP
AMC	EWG	THA
ANA	JAT	THY
ANZ	JKK	UAL
AUA	LHA	USA
BMA	LOT	VRG
CIM	MSR	WTA
SWR	RUS	

**EDMM Squawks**

2301-2337:	EDDM (DEL-TWR)
2340-2353:	EDDN (GND-APP, EDQx, ETIC)
2354-2367:	EDMM (CTR, mit EDME, EDMS)
2370-2377:	EDDM (APP, mit EDMA, EDMO)
7000 :	VFR
0033/0036:	Mil. VFR/Polizei
0020 :	Rettungsheli

**QNH**

Up to 977	=	TRL80
978 - 1013	=	TRL70
1014-1050	=	TRL60
1051 - undef.	=	TRL50

**TRL**

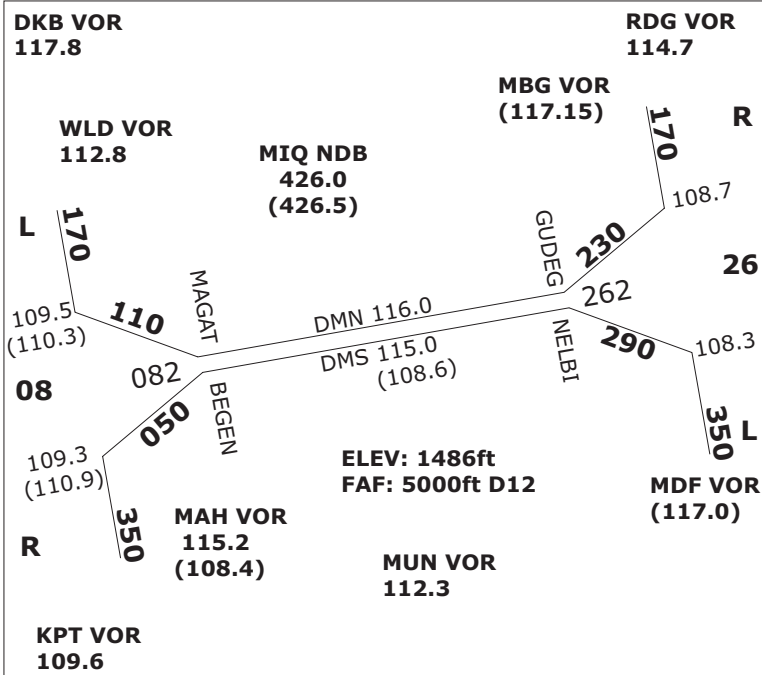
**MUENCHEN SIDs - INITIAL CLIMB FL70**

SID	08L	08R	26L	26R
<b>ALG</b> Sun/Sat	1Q	1E•	1S•	1N
<b>ANKER</b>	7Q•	8E	6S	8N•
<b>EGG</b>	3Q	5E•	5S• 5W	4N
<b>EVIVA</b> Prop	2Q•	2E	2S	3N•
<b>GIVMI</b> Jet	4Q•	4E	5S	5W•
<b>INPUD</b> Jet	1Q•	1E	1S	1N•
<b>KPT</b>	2Q	2E•	1S•	1N
<b>MEBEK</b>	2Q	3E•	2S• 2W	1N
<b>MERSI</b> Jet	2Q	2E•	3S•	3N
<b>MIQ</b> Non-RNAV	7Q•	7E	7S	8N•
<b>OBAXA</b> Prop	3Q	3E•	4S•	3N
<b>RIDAR</b>	5Q	5E•	5S•	5N
<b>ROTAX</b>	2Q	2E•	1S• 1W	1N
<b>TULSI*</b>	9Q	1E•	4S• 1W	9N
<b>TURBU</b> Jet	6Q	5E•	5S• 5W	4N
<b>VAVOR</b> Jet	2Q	2E•	1S• 1W	1N

CAT II: ab RVR auf einer Bahn kleiner oder gleich 600m und/oder Ceiling kleiner 200 ft  
CAT III: ab RVR auf einer Bahn kleiner oder gleich 325m

**Augsburg SIDs - I.C. 3.500 ft (KPT FL70)**

SID	25	07	SID	25	07
<b>MAH</b>	4G	3F	<b>KPT</b>	7G	7F
<b>MIQ</b>	3G	3F	<b>RIDAR</b>	4G	5F



**DESCENDS & STARS**

<b>ANDEC</b> FI130	<b>DEGIN 1A</b> FI120	<b>NAPSA 1A</b> FL110
<b>ABGAS 1A</b>	<b>DISUN</b> FL120	<b>OBAGA 1A</b>
<b>ARPOT 1A</b>	<b>IBRIR 1A</b>	<b>OSDER 1A</b>
<b>BETOS</b> FL110	<b>KOGOL 1A</b>	<b>RENLO 1A</b> FL130
<b>BIXEL 1A</b> FL120	<b>LURER</b> FL130	<b>RIDAR 1A</b> FL130
<b>BURAM 1A</b> FL130	<b>LANDU</b> FL110	<b>ROKIL</b> FL110
	<b>MERSI 1A</b>	<b>VAMAS 1A</b> FL110

**ATC FREQUENCIES - INTERNAL UNITS**

<i>EDMM_R_CTR</i> 132.550	EDDM_N_APP 128.020
<b>EDMM_A_CTR</b> 129.100	EDDM_S_APP 120.770
<i>EDMM_E_CTR</i> 129.550	EDDM_F_APP 118.820
<i>EDMM_K_CTR</i> 124.050	EDDM_N_DEP 123.900
<i>EDMM_C_CTR</i> 133.670	EDDM_S_DEP 127.950
<i>EDMM_N_CTR</i> 124.820	EDDM_N_TWR 118.700
<i>EDMM_S_CTR</i> 131.020	EDDM_S_TWR 120.500
<i>EDMM_F_CTR</i> 122.670	EDDM_N_GND 121.970
<i>EDMM_T_CTR</i> 133.570	EDDM_S_GND 121.820
<i>EDMM_U_CTR</i> 128.970	EDDM_1_GND 121.770
<i>EDMM_I_CTR</i> 120.650	EDDM_2_GND 121.700
	EDDM_3_GND 121.920
	EDDM_DEL 121.720

**Augsburg / EDMA**  
TWR: 124.970 MHz ELEV 1515 ft

RWY	07
APP	RNAV (GPS)
FREQ	115.9 (AUG DME)
CRS	070°
LENGTH	1280m
FAP DIST/ALT	(ABUSI) 6.1NM / 3500 ft
RWY	25
APP	ILS DME/NDB/RNAV (GPS)
FREQ	108.50 (AUG)
CRS	250°
LENGTH	1280m
FAP DIST/ALT	(BUREG) 5.6NM / 3500 ft

**Oberpfaffenhofen / EDMO**  
TWR: 119.550 MHz ELEV 1947 ft

RWY	22
APP	ILS DME / NDB GPS
FREQ	110.50 (OBI)
CRS	222°
LENGTH	2286m
FAP DIST/ALT	7 DME OBI / 4000 ft
RWY	04
APP	ILS DME / NDB GPS
	RWY 22
	circling south east of apt

**Ingolstadt / ETSI**  
TWR: 125.250 MHz ELEV 1202 ft

RWY	25L
APP	ILS / NDB
FREQ	111.4 (MG)
CRS	248°
LENGTH	2940m
FAP DIST/ALT	(SIGGI) 12 NM / 2700 ft
RWY	07R
APP	ILS / NDB RWY 25L
	circling 07R

**Friedrichshafen / EDNY**  
TWR: 120.070 MHz ELEV 1367 ft

RWY	06
APP	ILS DME / RNAV (GPS)
FREQ	111.90 (IFHE)
CRS	059°
LENGTH	2356m
FAP DIST/ALT	5.2 DME FHD / 3000 ft
RWY	24
APP	ILS / RNAV (GPS)
FREQ	111.90 (IFHW)
CRS	239°
LENGTH	2356m
FAP DIST/ALT	8.9 DME FHD / 4000 ft

**Memmingen / EDJA**  
TWR: 126.850 MHz ELEV 2078 ft

RWY	24
APP	ILS NDB, RNAV (GPS)
FREQ	110.10 (IAMW)
CRS	238°
LENGTH	2400m
FAP DIST/ALT	(OGROB)/D6.9 ALD, 4000ft
RWY	06
APP	NDB, RNAV (GPS)
FREQ	341, ALG
CRS	58°
LENGTH	2400m
FAP DIST/ALT	(ERTUL)/D6.2 ALD, 4000ft

**MISC. ATC FREQUENCIES**

EDGG_S_CTR	125.400
EDUU_CTR	133.650
LKAA_CTR	127.120
LOVV_CTR	134.350
LSAS_CTR	128.050
LIMM_CTR	127.450
LIPP_CTR	125.470
LOWW_APP	128.200
EDDF_N_APP	120.800
EDDS_APP	125.050
EDDC_APP	125.620
EDDP_APP	126.170
LKPR_APP	127.570
LOWI_APP	119.270
LOWS_APP	123.720
LSZH_V_APP	120.750