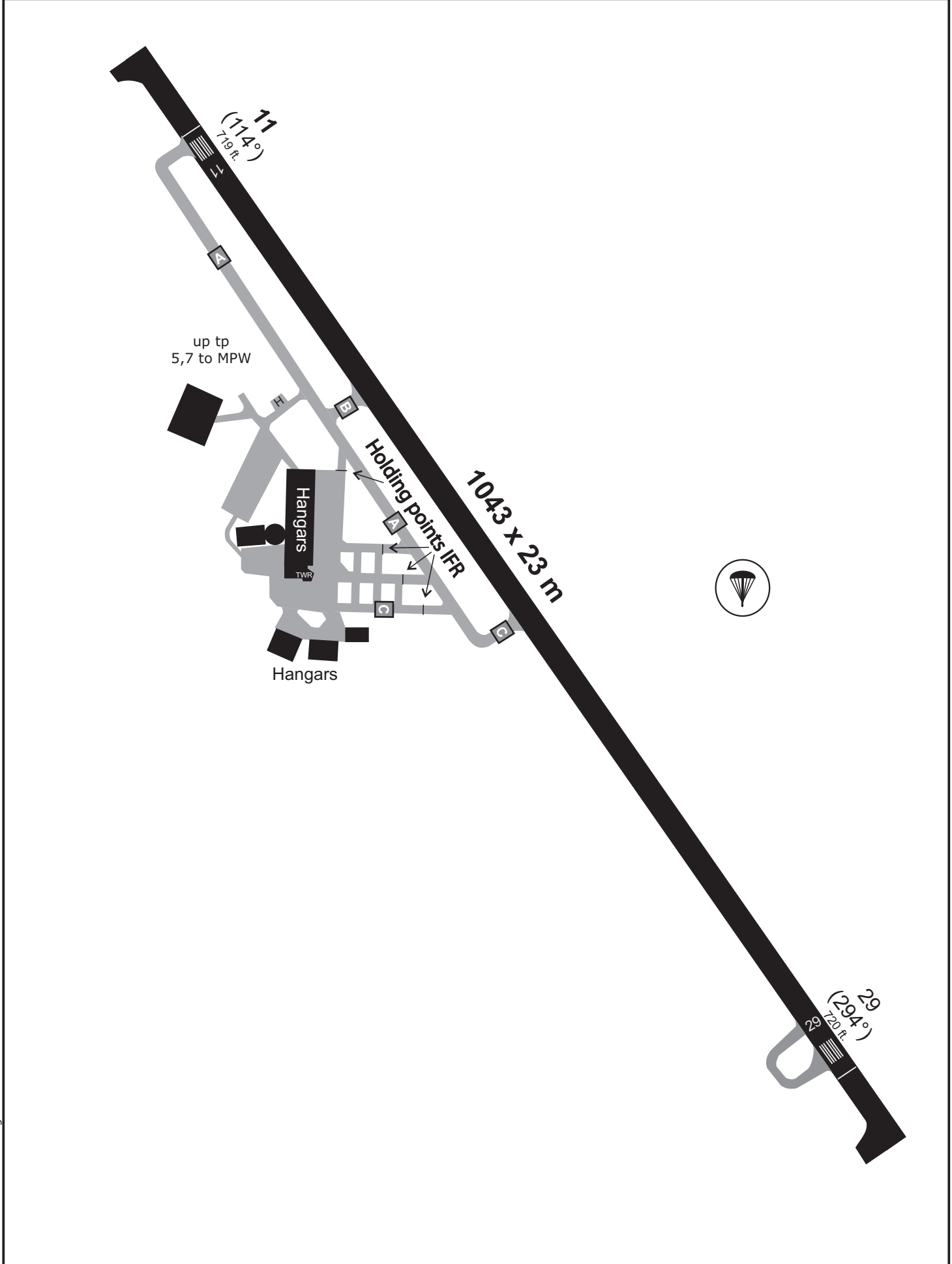


TRANS LEVEL: BY ATC TRANS ALT: 5000'	Haßfurt Info 119.80	MÜNCHEN Radar 129.52	MÜNCHEN Radar 132.55	MÜNCHEN Radar 124.05
---	------------------------	-------------------------	-------------------------	-------------------------



Do not use for real life navigation!

	HASSFURT Info 119.80	MÜNCHEN Radar 129.52	MÜNCHEN Radar 129.10
--	-------------------------	-------------------------	-------------------------

TRANS ALT: 5000' TRANS LEVEL: By ATC Apt.Elev. 718'

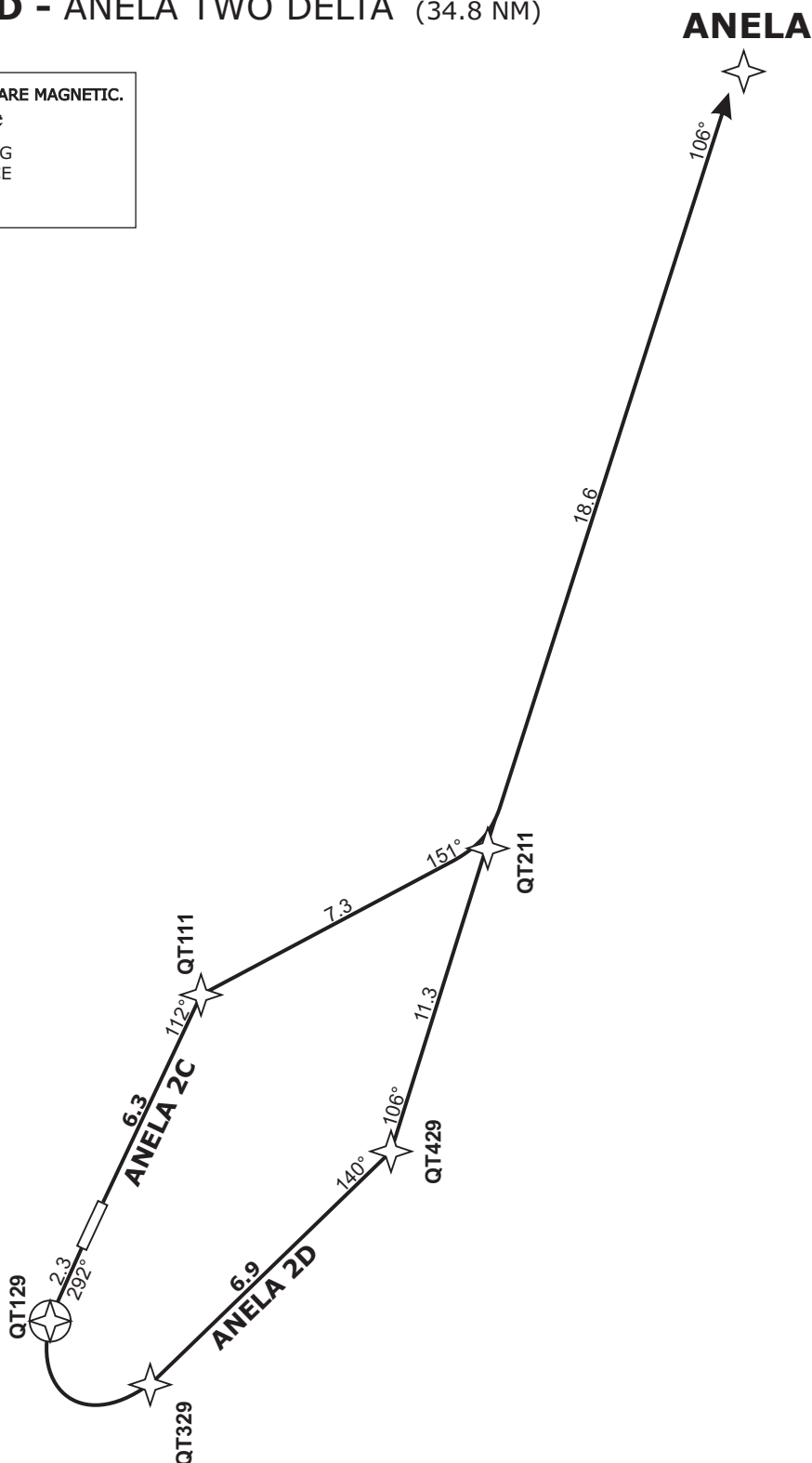
ANELA 2C - ANELA TWO CHARLIE (32.2 NM)
ANELA 2D - ANELA TWO DELTA (34.8 NM)

BEARINGS AND TRACKS ARE MAGNETIC.
ALTITUDES IN FEET MSL.
DEPARTURES ENTERING CONTROLLED AIRSPACE WHEN PASSING 1000 AGL.

4800'

MSA 25 NM from ARP
(* German territory only)

Do not use for real life navigation!



Contact München Radar immediately after take-off!

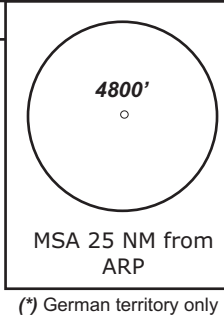
Initial climb A5000 ft

SID	RWY	ROUTING	GPS/FMS RNAV	REMARKS
ANELA 2D	29	Climb on track 292° to QT129, LT, via QT329 on track 140° to QT429, LT, on track 106° to ANELA. Climb with 4.3% (260 ft/NM) or more until passing 2000. Cross ANELA at or above 6000.	[A1200+] -QT129[L] - QT329 - QT429[L] - ANELA[A6000+].	1. PDG 4.3% (260 ft/NM) due to obstacles. 2. Altitude restriction at ANELA due to NLFS.
ANELA 2C	11	Climb on track 112° to QT111, RT, on track 151° to QT211, LT, on track 106° to ANELA. Climb with 4.4% (270 ft/NM) or more until passing 1400. Cross ANELA at or above 6000.	[A1200+] - QT111[R] - QT211[L] - ANELA[A6000+].	1. PDG 4.4% (270 ft/NM) due to obstacles. 2. Altitude restriction at ANELA due to NLFS.

	HASSFURT Info 119.80	MÜNCHEN Radar 129.52	MÜNCHEN Radar 129.10
--	-------------------------	-------------------------	-------------------------

TRANS ALT: 5000' TRANS LEVEL: By ATC Apt.Elev. 718'

LONLI 2C - LONLI TWO CHARLIE (28.1 NM)
LONLI 2D - LONLI TWO DELTA (31.2 NM)

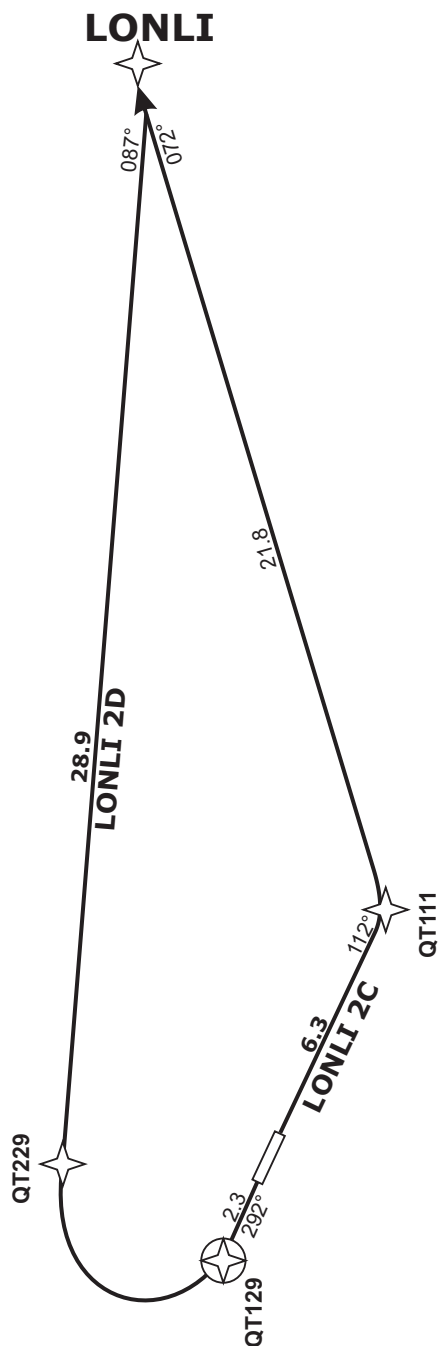


(*) German territory only

BEARINGS AND TRACKS ARE MAGNETIC.
ALTITUDES IN FEET MSL

DEPARTURES ENTERING
CONTROLLED AIRSPACE
WHEN PASSING
1000 AGL.

Do not use for real life navigation!



Contact München Radar immediately after take-off!

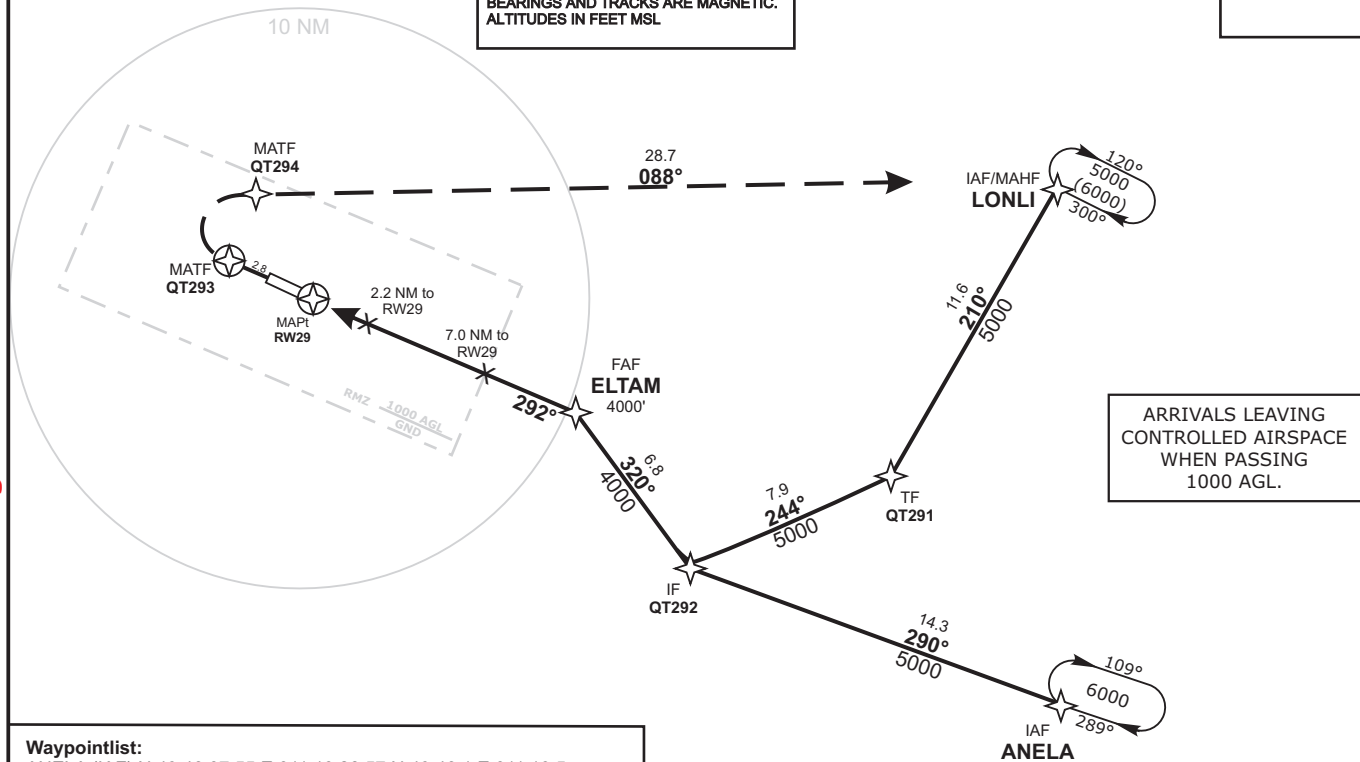
Initial climb A5000 ft

SID	RWY	ROUTING	GPS/FMS RNAV	REMARKS
LONLI 2D	29	Climb on track 292° to QT129, RT, via QT229 on track 087° to LONLI. Climb with 4.3% (260 ft/NM) or more until passing 2000. Cross LONLI at or above 6000.	[A1200+] - QT129[R] - QT229 - LONLI[A6000+].	1. PDG 4.3% (260 ft/NM) due to obstacles. 2. Altitude restriction at LONLI due to NLFS.
LONLI 2C	11	Climb on track 112° to QT111, LT, on track 072° to LONLI. Climb with 4.4% (270 ft/NM) or more until passing 1400. Cross LONLI at or above 6000.	[A1200+] - QT111[L] - LONLI[A6000+].	1. PDG 4.4% (270 ft/NM) due to obstacles. 2. Altitude restriction at LONLI due to NLFS.

TRANS LEVEL: BY ATC TRANS ALT: 5000'	HASSFURT Info 119.80	MÜNCHEN Radar 129.52	MÜNCHEN Radar 129.10
VOR/DME BAY 110.6	Final Apch Course 292°	FAF ELTAM 4000'	OCH RELATED TO THR29 ELEV 720'
Apt.Elev. 718'			

MISSED APCH:
RNAV (GPS): Climb on track 292° to QT293, RT, via QT294 on track 088° to LONLI climbing to 5000.
QT293[R] - QT294 -LONLI[A5000].

BEARINGS AND TRACKS ARE MAGNETIC.
 ALTITUDES IN FEET MSL



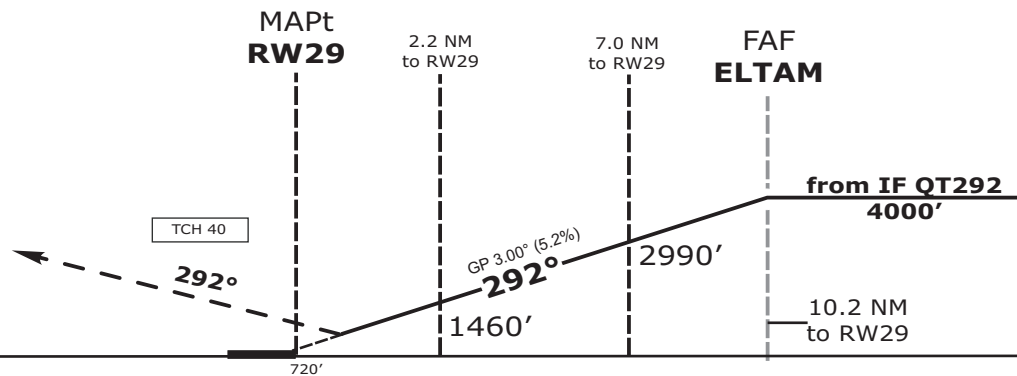
ARRIVALS LEAVING
 CONTROLLED AIRSPACE
 WHEN PASSING
 1000 AGL.

Waypointlist:

- ANELA (IAF) N 49 46 07.55 E 011 13 28.57 N 49 46.1 E 011 13.5
- QT291 (TF) N 49 54 36.88 E 011 04 09.85 N 49 54.6 E 011 04.2
- QT292 (IF) N 49 51 27.37 E 010 53 03.18 N 49 51.5 E 010 53.1
- ELTAM (FAF) N 49 56 53.60 E 010 46 37.42 N 49 56.9 E 010 46.6
- RW29 (MAPt) N 50 00 58.35 E 010 32 10.76 N 50 01.0 E 010 32.2
- QT293 (MATF) N 50 02 06.09 E 010 28 09.27 N 50 02.1 E 010 28.2
- QT294 (MATF) N 50 04 38.20 E 010 29 02.34 N 50 04.6 E 010 29.0
- LONLI (IAF/MAHF) N 50 04 29.06 E 011 13 34.99 N 50 04.5 E 011 13.6

Do not use for real life navigation!

Revision: 2014-12-11 - Change: Airspace F replaced by RMZ, note modified, note deleted



OCA (OCH)	A	B			DIST THR / RW29	2	3	4	5	6	7	8	9
LNAV	1140 (420)	1140 (420)			ALTITUDE	1400	1720	2040	2360	2680	2990	3310	3630
					GS	kts		80	100	120	140	160	
					ELTAM - RW29 (10.2 NM)	MIN:SEC	7:39	6:07	5:06	4:22	3:50		
Timing not authorized for defining the MAPt.					Rate of descent (5.2%)	ft/MIN	420	530	640	740	840		