

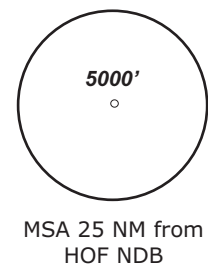
HOF ATIS check controller info	HOF Tower 124.35	MÜNCHEN Radar 129.52	MÜNCHEN Radar 124.05
-----------------------------------	---------------------	-------------------------	-------------------------

TRANS ALT: 5000'

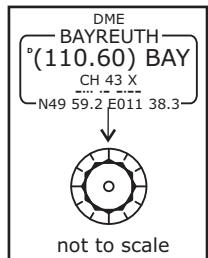
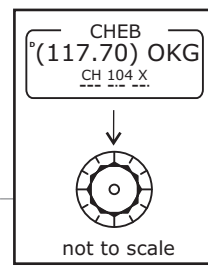
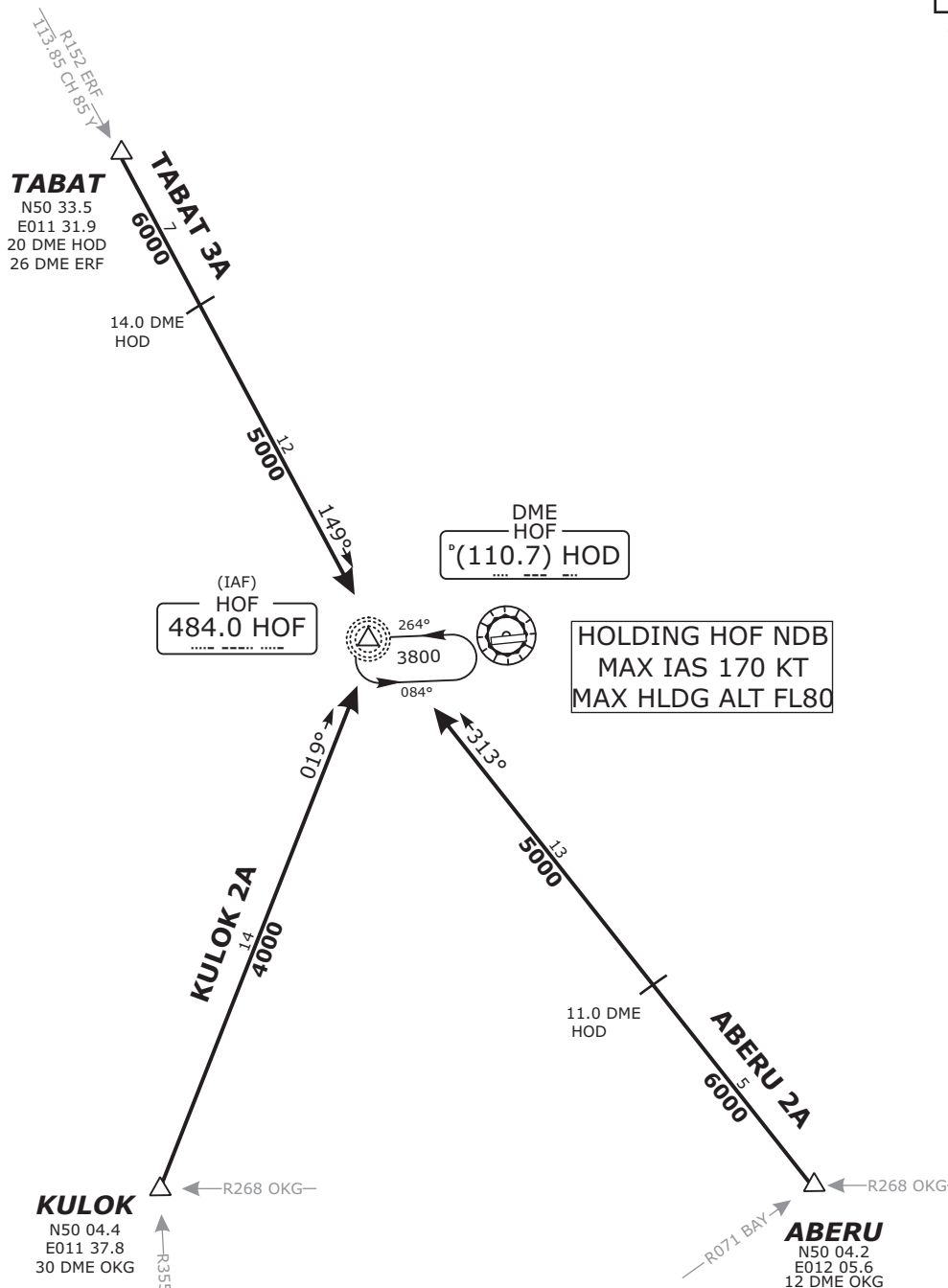
TRANS LEVEL: By ATC

Apt.Elev. 1960'

ABERU 2A - ABERU TWO ALPHA [ABER2A]
KULOK 2A - KULOK TWO ALPHA [KULO2A]
TABAT 3A - TABAT THREE ALPHA [TABA3A]



(*) German territory only



BEARINGS AND TRACKS ARE MAGNETIC.
ALTITUDES IN FEET MSL

IFR PROFILES WITHIN AIRSPACE CLASS E.
WATCH OUT FOR VRF TRAFFIC UNKNOWN TO ATC.

Do not use for real life navigation!

Revision: 2013-05-30 - Change: Rwy designators, procedure, BAY DME withdrawn