

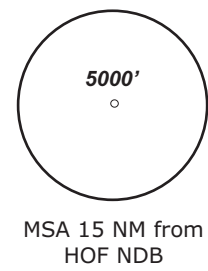
HOF ATIS check controller info	HOF Tower 124.35	MÜNCHEN Radar 129.52	MÜNCHEN Radar 124.05
-----------------------------------	---------------------	-------------------------	-------------------------

TRANS ALT: 5000'

TRANS LEVEL: By ATC

Apt.Elev. 1960'

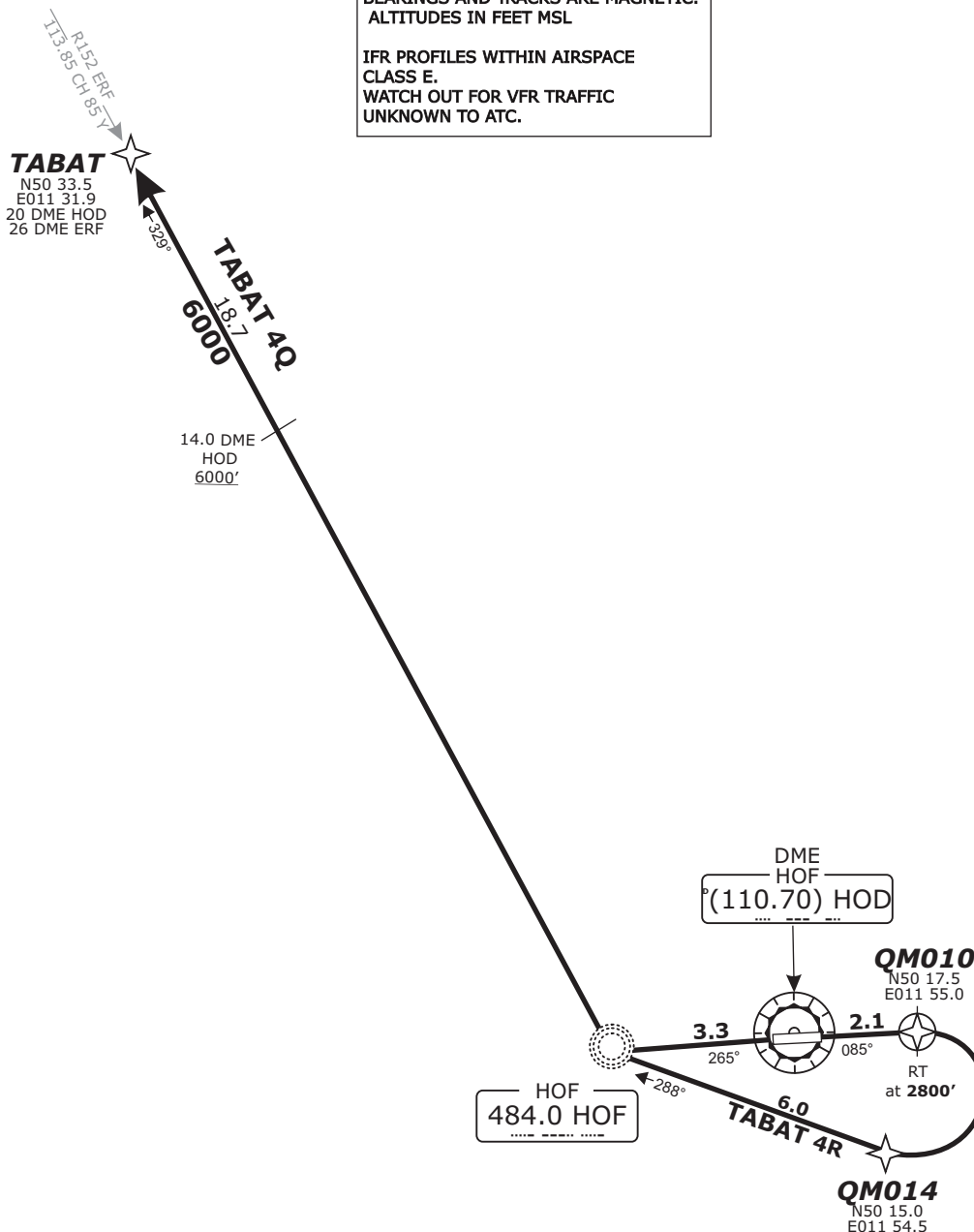
TABAT 4R - TABAT FOUR ROMEO (26.8 NM)
TABAT 4Q - TABAT FOUR QUEBEC (22.0 NM)



(*) German territory only

BEARINGS AND TRACKS ARE MAGNETIC.
ALTITUDES IN FEET MSL

IFR PROFILES WITHIN AIRSPACE
CLASS E.
WATCH OUT FOR VFR TRAFFIC
UNKNOWN TO ATC.



Do not use for real life navigation!

Pilots of GPS/FMS-RNAV-equipped aircraft shall, if possible, use the supplementary GPS/FMS RNAV procedures which are described following the text "GPS / FMS RNAV:" and charted. The ground-based navigation aids required for the use of the respective conventional flight procedure and the associated aircraft equipment shall remain in operation at all times

Contact München Radar immediately after take-off!

Initial climb FL 70

SID	RWY	ROUTING	GPS/FMS RNAV	REMARKS
TABAT 4Q	26	On RWY track to 2.7 DME HOD, RT, on track 330° HOF to TABAT. Cross 14.0 DME HOD at 6000 or above. MNM climb gradient 6.8% (383 ft/NM) to 2300.	HOF[A2400+; R] - TABAT.	
TABAT 4R	08	On RWY track until passing 2800, RT, to HOF; on track 329° HOF to TABAT. Cross 14.0 DME HOD at 6000 or above.	QM010[A2800+; R] - QM014 - HOF[R] - TABAT.	