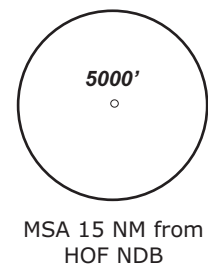


HOF ATIS check controller info	HOF Tower 124.35	MÜNCHEN Radar 129.52	MÜNCHEN Radar 124.05
-----------------------------------	---------------------	-------------------------	-------------------------

TRANS ALT: 5000'

TRANS LEVEL: By ATC

Apt.Elev. 1960'



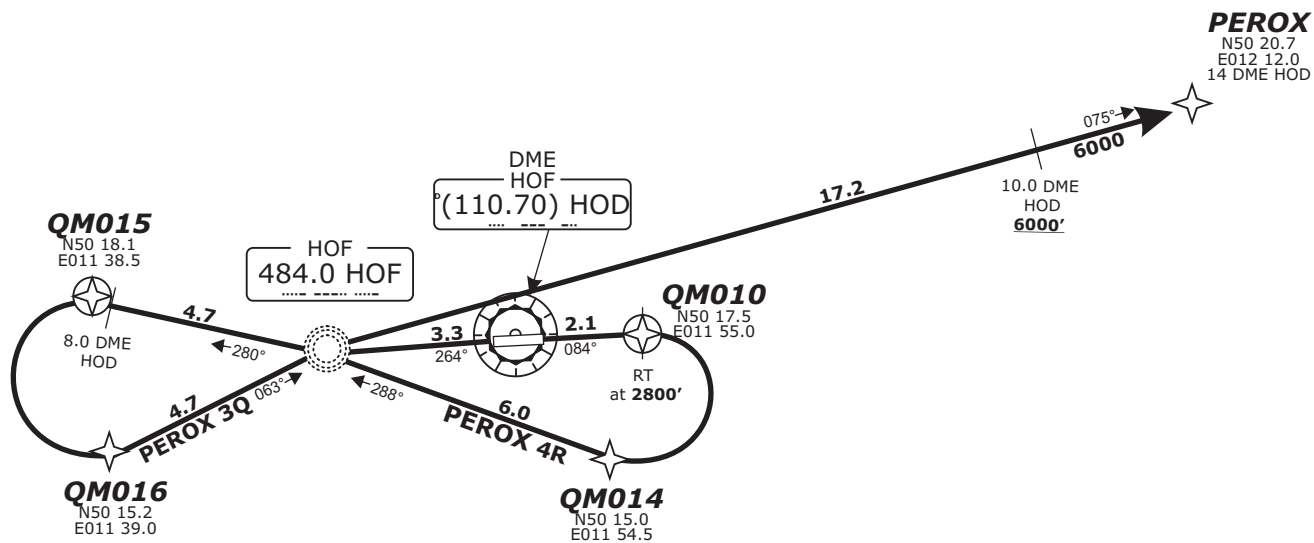
(\*) German territory only

**PEROX 4R - PEROX FOUR ROMEO** (34.7 NM)  
**PEROX 3Q - PEROX THREE QUEBEC** (29.9 NM)

BEARINGS AND TRACKS ARE MAGNETIC.  
ALTITUDES IN FEET MSL

IFR PROFILES WITHIN AIRSPACE  
CLASS E.  
WATCH OUT FOR VFR TRAFFIC  
UNKNOWN TO ATC.

Do not use for real life navigation!



Pilots of GPS/FMS-RNAV-equipped aircraft shall, if possible, use the supplementary GPS/FMS RNAV procedures which are described following the text "GPS / FMS RNAV:" and charted. The ground-based navigation aids required for the use of the respective conventional flight procedure and the associated aircraft equipment shall remain in operation at all times

**Contact München Radar immediately after take-off!**

**Initial climb FL 70**

SID	RWY	ROUTING	GPS/FMS RNAV	REMARKS
<b>PEROX 3Q</b>	<b>26</b>	Direct to HOF, on track 280° HOF to 8.0 DME HOD, LT, to HOF; on track 075° HOF to PEROX. Cross 10.0 DME HOD at 6000 or above.	HOF[A2400+; R] - QM015[L] - QM016 - HOF[R] - PEROX.	
<b>PEROX 4R</b>	<b>08</b>	On RWY track until passing 2800, RT, to HOF; on track 280° HOF to 8.0 DME HOD, LT, to HOF; on track 070° HOF to PEROX. Cross 10.0 DME HOD at 6000 or above.	QM010[A2800+; R] - QM014 - HOF[L] - QM015[L] - QM016 - HOF[R] - PEROX.	