

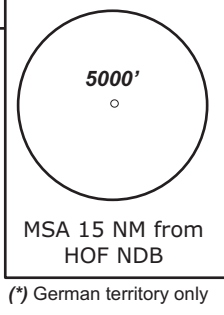
HOF ATIS check controller info	HOF Tower 124.35	MÜNCHEN Radar 129.52	MÜNCHEN Radar 124.05
-----------------------------------	---------------------	-------------------------	-------------------------

TRANS ALT: 5000'      TRANS LEVEL: By ATC      Apt.Elev. 1960'

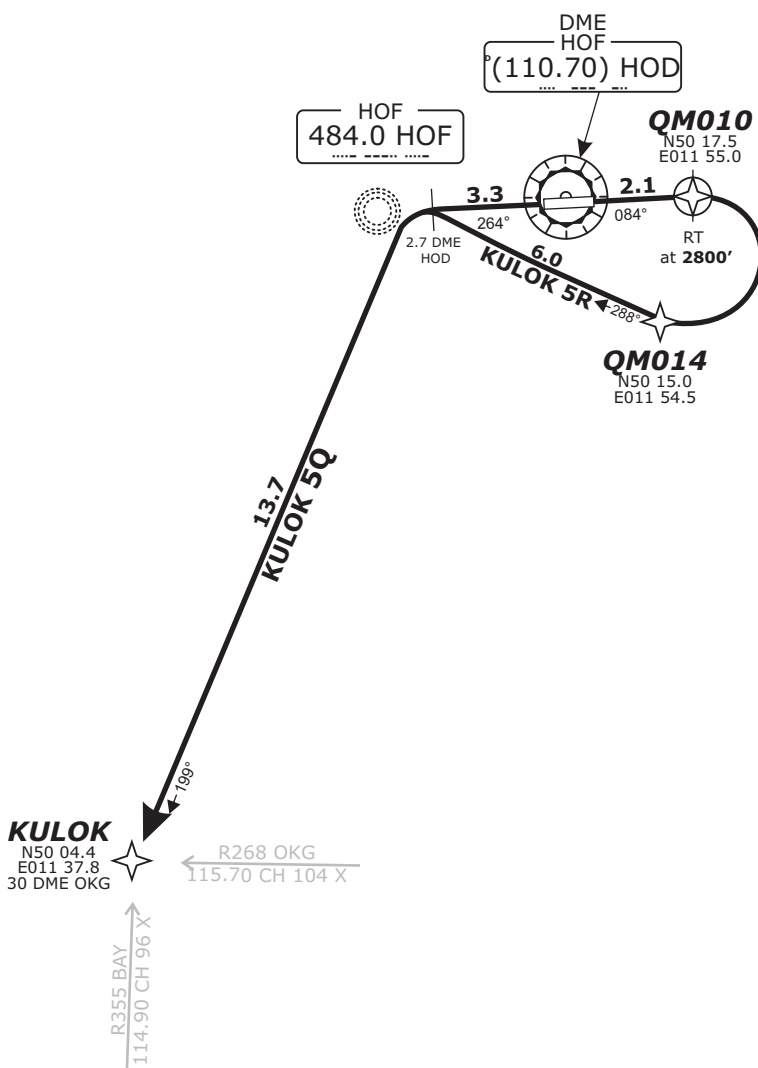
**KULOK 5R - KULOK FIVE ROMEO** (21.8 NM)  
**KULOK 5Q - KULOK FIVE QUEBEC** (17.0 NM)

BEARINGS AND TRACKS ARE MAGNETIC.  
ALTITUDES IN FEET MSL

IFR PROFILES WITHIN AIRSPACE  
CLASS E.  
WATCH OUT FOR VFR TRAFFIC  
UNKNOWN TO ATC.



Do not use for real life navigation!



Pilots of GPS/FMS-RNAV-equipped aircraft shall, if possible, use the supplementary GPS/FMS RNAV procedures which are described following the text "GPS / FMS RNAV:" and charted. The ground-based navigation aids required for the use of the respective conventional flight procedure and the associated aircraft equipment shall remain in operation at all times

**Contact München Radar immediately after take-off!**

**Initial climb 5000'**

SID	RWY	ROUTING	GPS/FMS RNAV	REMARKS
KULOK 5Q	26	On RWY track to 2.7 DME HOD, LT, on track 199° HOF to KULOK. MNM climb gradient 6.3% (383 ft/NM) to 2300.	HOF[A2400+; L] - KULOK.	
KULOK 5R	08	On RWY track until passing 2800, RT, to HOF; on track 199° HOF to KULOK.	QM010[A2800+; R] - QM014 - HOF[L] - KULOK	