

HOF ATIS check controller info	HOF Tower 124.35	MÜNCHEN Radar 129.52	MÜNCHEN Radar 124.05.10
-----------------------------------	---------------------	-------------------------	----------------------------

TRANS ALT: 5000'

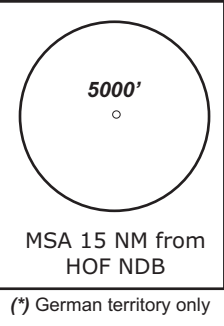
TRANS LEVEL: By ATC

Apt.Elev. 1960'

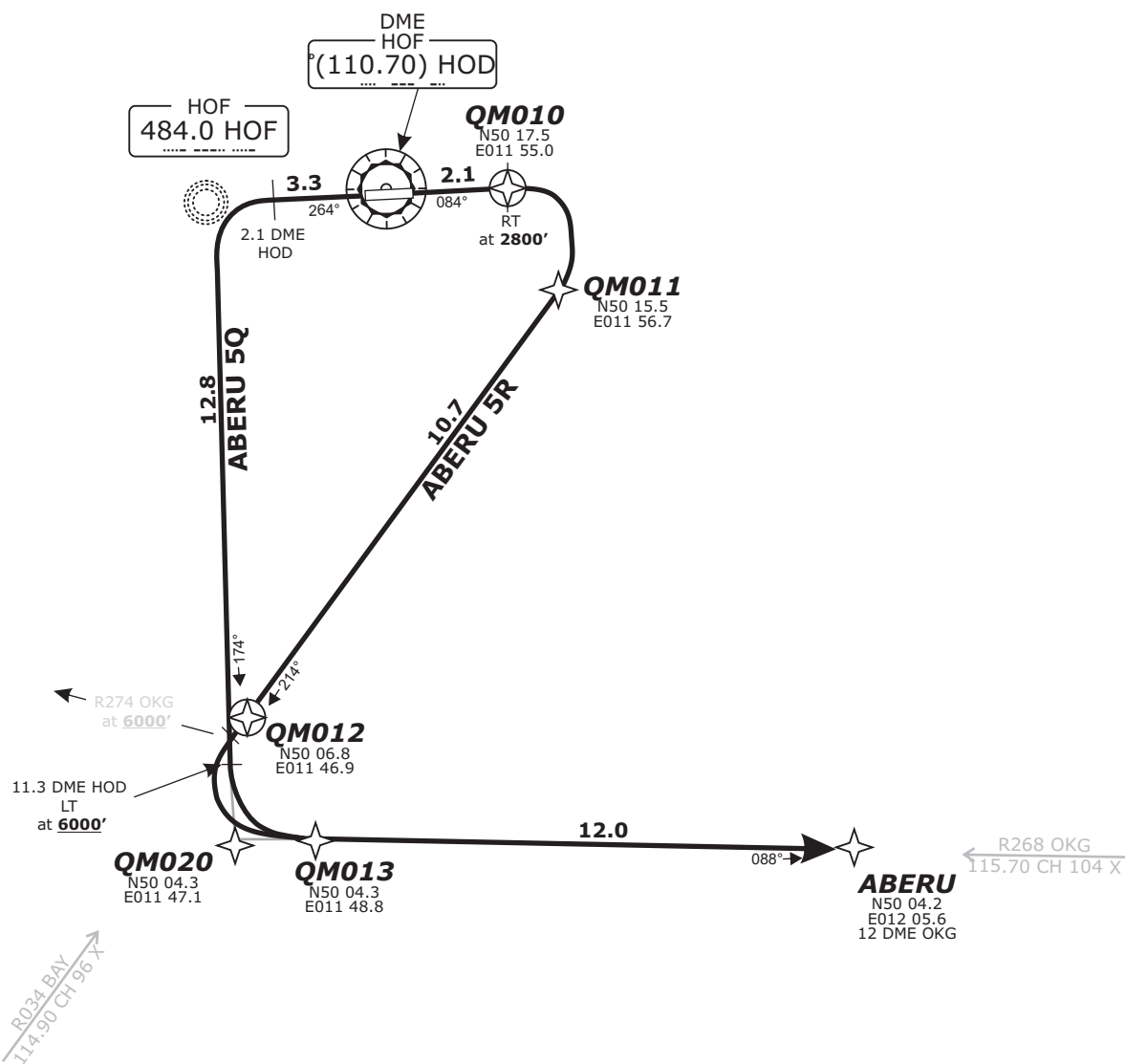
**ABERU 5R - ABERU FIVE ROMEO** (22.6 NM)  
**ABERU 5Q - ABERU FIVE QUEBEC** (28.1 NM)

BEARINGS AND TRACKS ARE MAGNETIC.  
ALTITUDES IN FEET MSL

IFR PROFILES WITHIN AIRSPACE  
CLASS E.  
WATCH OUT FOR VFR TRAFFIC  
UNKNOWN TO ATC.



Do not use for real life navigation!



Pilots of GPS/FMS-RNAV-equipped aircraft shall, if possible, use the supplementary GPS/FMS RNAV procedures which are described following the text "GPS / FMS RNAV:" and charted. The ground-based navigation aids required for the use of the respective conventional flight procedure and the associated aircraft equipment shall remain in operation at all times

**Contact München Radar immediately after take-off!**

**Initial climb FL 70**

SID	RWY	ROUTING	GPS/FMS RNAV	REMARKS
<b>ABERU 5Q</b>	<b>26</b>	On RWY track to 2.1 DME HOD, LT, on track 174° HOF to 11.3 DME HOD, LT, on R268 OKG to ABERU. Cross 11.3 DME HOD at 6000 or above. MNM climb gradient 6,8 % (383 ft/NM) to 2300.	HOF[A2400+;L] - QM020[A6000+;L] - ABERU.	
<b>ABERU 5R</b>	<b>08</b>	On RWY track until passing 2800, RT on track 214°/R034 BAY, when crossing R268 OKG LT, on R268 OKG to ABERU. Cross R274 OKG at 6000 or above	QM010[A2800+;R] - QM011 - QM012[A6000+;L] - QM013 - ABERU.	

Revision: 2015-05-28 - Change: MSA radius