

TRANS LEVEL: BY ATC TRANS ALT: 5000'		HOF Tower 124.35		MÜNCHEN Radar 129.52		MÜNCHEN Radar 124.05	
NDB HOF <b>484.0</b>	VOR/DME HOD <b>110.70</b>	Final Apch Course <b>264°</b>	FAF 5.3 DME HOD <b>3800'</b>	MDA(H) <b>2550'</b> (660)	Apt.Elev. 1960'		

**MISSED APCH:** Climb straight ahead to 5.3 DME HOD, RT to HOF NDB to 3800.

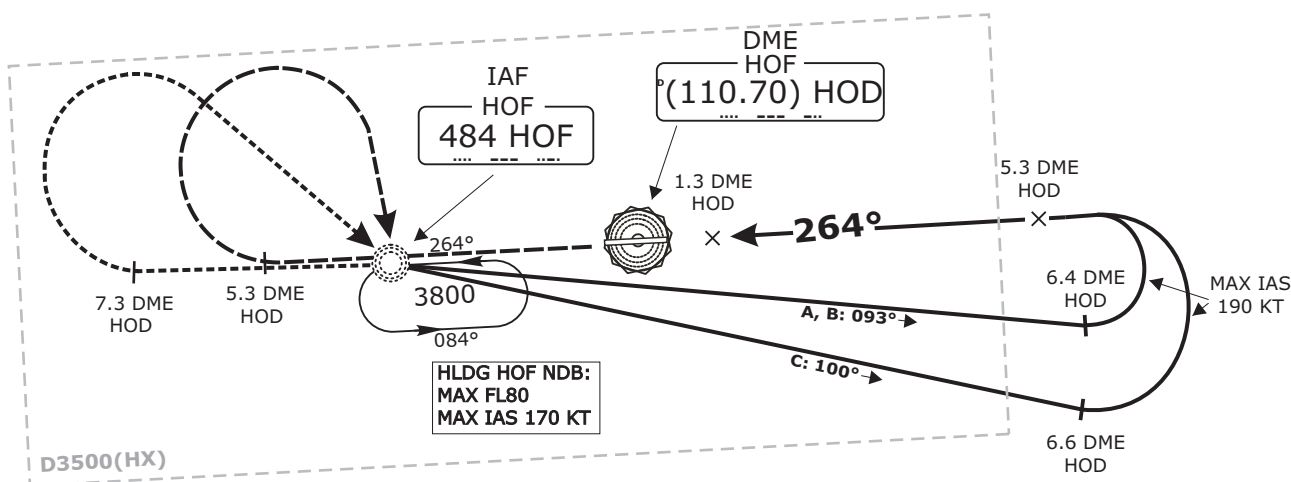
BEARINGS AND TRACKS ARE MAGNETIC.  
ALTITUDES IN FEET MSL

IFR PROFILES WITHIN AIRSPACE  
CLASS E.  
WATCH OUT FOR VFR TRAFFIC  
UNKNOWN TO ATC.

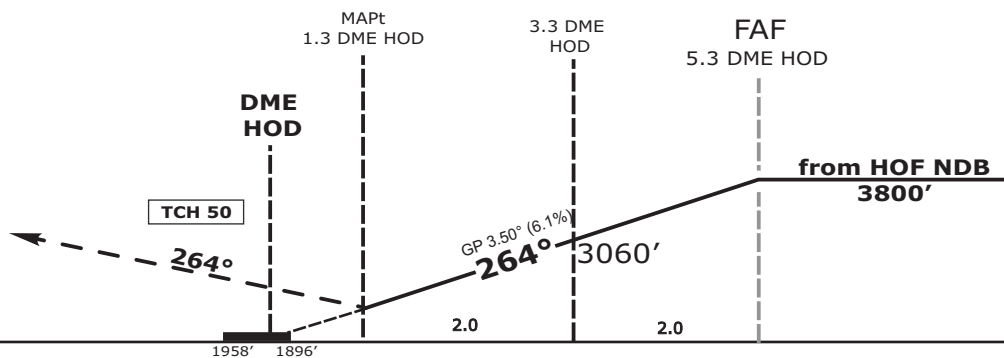
**DME  
REQUIRED.**

MSA 25 NM from  
HOF NDB

(\*) German territory only



Do not use for real life navigation!



<b>OCA (OCH)</b>	A	B	C			DME DMN	<b>2</b>	<b>3</b>	<b>4</b>	<b>5</b>						
NDB-DME	2350'	2350'	2350'			DIST THR	1.7	2.7	3.7	4.7						
	(460)	(460)	(460)			ALTITUDE	2580'	2950'	3320'	3690'						
						Timing not authorized for defining the MAPT.										
						GS	kt				<b>80</b>	<b>100</b>	<b>120</b>	<b>140</b>	<b>160</b>	<b>180</b>
CIRCLING*	2550'	2560'	3060'			3.3 DME HOD - 1.3 DME HOD (2.0 NM)	MIN:SEC				1:30	1:12	1:00	0:51	0:45	0:40
OCH RELATED TO AD ELEV	(590)	(600)	(1100)			Rate of Descent (6.1%)	ft/MIN				490	620	740	860	990	1110

\*SOUTH OF AERODROME ONLY