

TRANS LEVEL: BY ATC TRANS ALT: 5000'		HOF Tower 124.35		MÜNCHEN Radar 129.52		MÜNCHEN Radar 124.05	
NDB HOF 484.0	VOR/DME HOD 110.70	Final Apch Course 084°	FAF 6.0 DME HOD 3800'	MDA(H) 2500' (540)	Apt.Elev. 1960'		

MISSED APCH: Climb straight ahead to 2800, RT, continue climb to HOF NDB to 3800.

BEARINGS AND TRACKS ARE MAGNETIC.
ALTITUDES IN FEET MSL

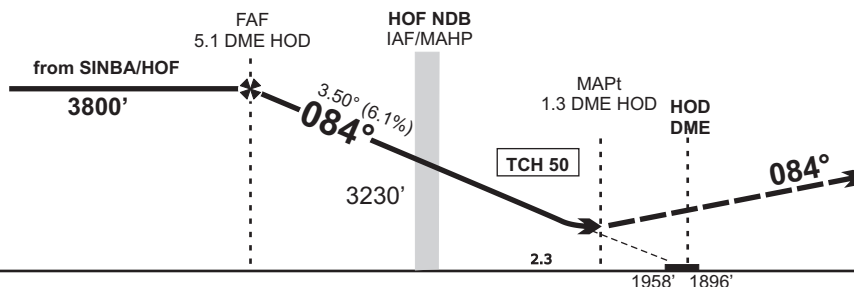
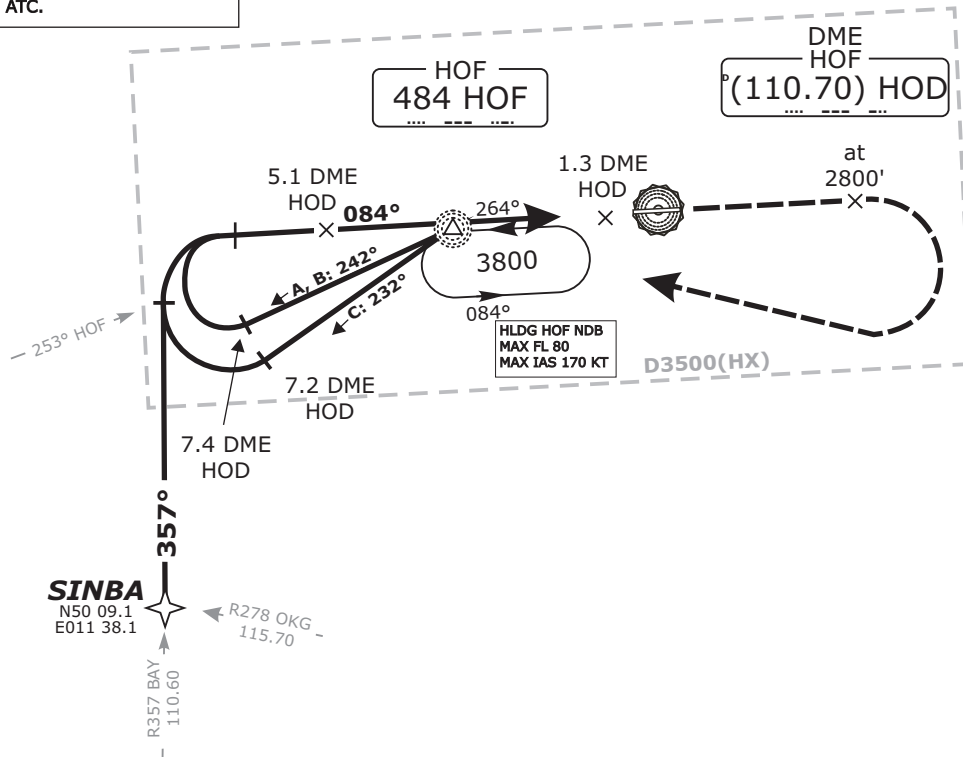
IFR PROFILES WITHIN AIRSPACE
CLASS E.
WATCH OUT FOR VFR TRAFFIC
UNKNOWN TO ATC.

**DME
REQUIRED.**

MSA 25 NM from
HOF NDB

(*) German territory only

Do not use for real life navigation!



OCA (OCH)	A	B	C			DME DMN	5	4	3	2						
NDB-DME	2500'	2500'	2500'			DIST THR	4.7	3.7	2.7	1.7						
	(540)	(540)	(540)			ALTITUDE	3750'	3380'	3010'	2640'						
						Timing not authorized for defining the MAPt.										
						GS	kt				80	100	120	140	160	180
CIRCLING*	2550'	2560'	3060'			HOF - 1.3 DME HOD (2.3 NM)	MIN:SEC		1:44	1:23	1:09	0:59	0:52	0:46		
OCH RELATED TO AD ELEV	(590)	(600)	(1100)			Rate of Descent (6.1%)	ft/MIN		420	620	740	860	990	1110		

*SOUTH OF AERODROME ONLY