

TRANS LEVEL: BY ATC TRANS ALT: 5000'		HOF Tower 124.35		MÜNCHEN Radar 129.52		MÜNCHEN Radar 124.05	
NDB HOF 484.0	VOR/DME HOD 110.70	Final Apch Course 264°	FAF GP INOP 5.3 DME HOD 3800'	MDA(H) 2376' (480')	Apt.Elev. 1960'		<p>5000' (*) HOF</p>

MISSED APCH: Climb straight ahead to 5.3 DME HOD, RT to HOF NDB to 3800.

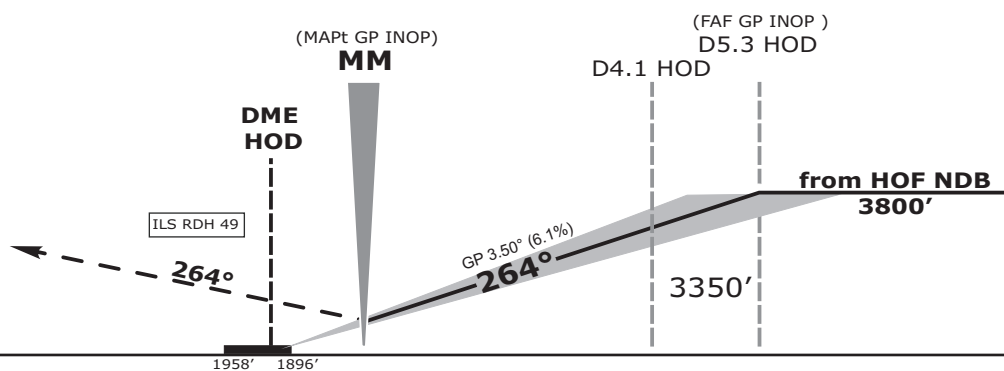
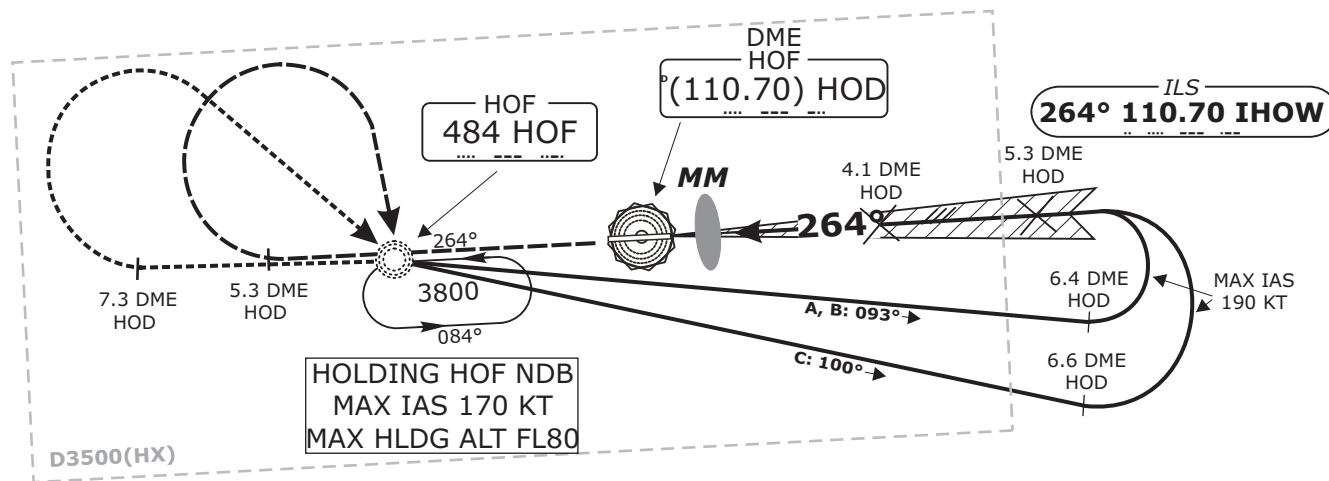
BEARINGS AND TRACKS ARE MAGNETIC.
ALTITUDES IN FEET MSL

IFR PROFILES WITHIN AIRSPACE
CLASS E.
WATCH OUT FOR VFR TRAFFIC
UNKNOWN TO ATC.

**LOC: DME
REQUIRED.**

MSA 25 NM from
HOF NDB

(*) German territory only



OCA (OCH)	A	B	C			DME DMN	2	3	4	5						
ILS CAT I	2176' (228)	2188' (292)	2200' (304)			DIST THR	1.7	2.7	3.7	4.7						
GP INOP	2390' (490)	2390' (490)	2390' (490)			ALTITUDE	2580'	2950'	3320'	3690'						
CIRCLING* <small>OCH RELATED TO AD ELEV</small>	2550' (590)	2560' (600)	3060' (1100)			LOC-DME: Timing not authorized for defining the MAPt.										
						GS	kt					80	100	120	140	160
						D4.1 HOD-THR (3.8 NM)	MIN:SEC		2:51	2:17	1:54	1:38	1:26	1:16		
						Rate of Descent (6.1%)	ft/MIN		490	620	740	860	990	1110		

*SOUTH OF AERODROME ONLY

Do not use for real life navigation!